

9-101/201-1066 2007-2017 Harley Davidson V-Rod Fuel Pump Installation Guide



Included Parts:

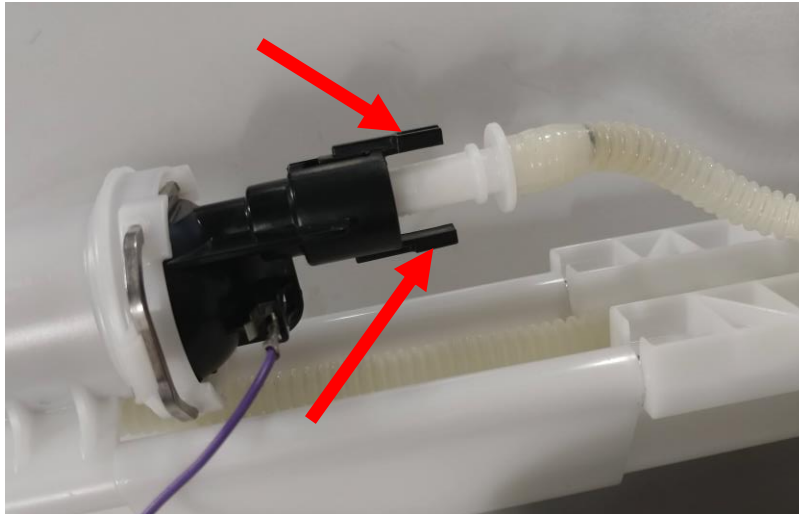
- DW100/200, 9-101/9-201 Fuel pump
- Fuel Pump Connector
- Fuel Filter Sock
- 1-5/16 to 3/8 9-inch Hose
- 2-11.3mm Permanent Clamp
- 2-13.3mm Permanent Clamp
- 2-Fuel/Heat Safe Butt Connectors

PLEASE READ: This guide is intended to aid in the installation of our products. It is recommended that factory manuals or instructions are followed to remove the fuel pump assembly from the vehicle. Instructions in this guide are generic and are intended to aid in the installation of a DW100/200 fuel pump. The factory manual should supersede any contradiction.

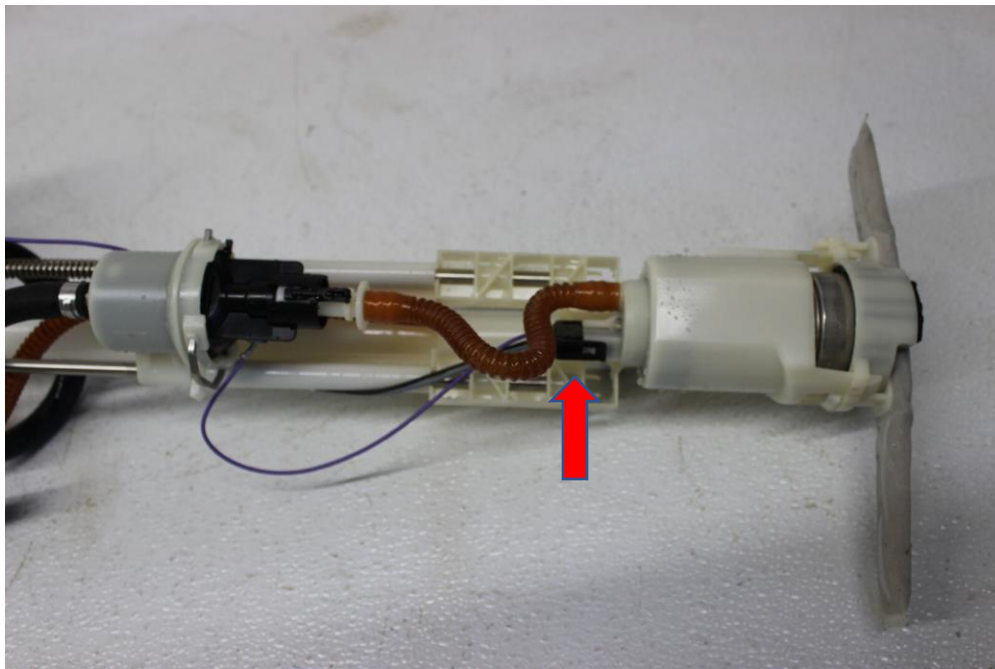
Below is a picture of some suggested tools that will make the installation process easier.



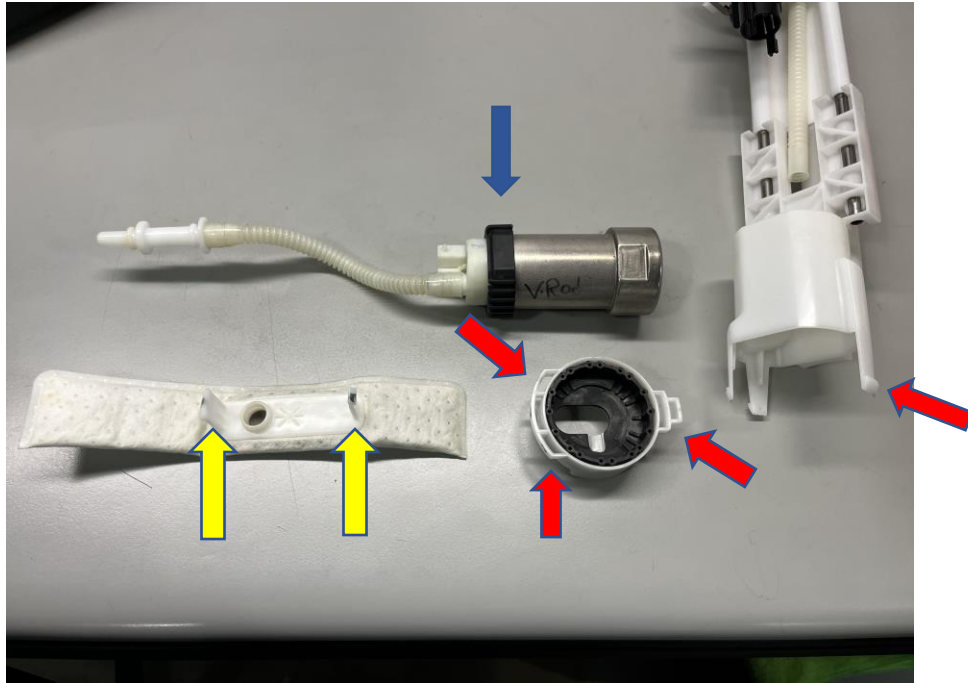
1 – Disconnect the OE fuel fitting from the filter/PRV assembly inlet. Depress both tabs inward to release the fitting. Once the tabs are depressed slide the fitting out of the filter/PRV inlet (red arrows).



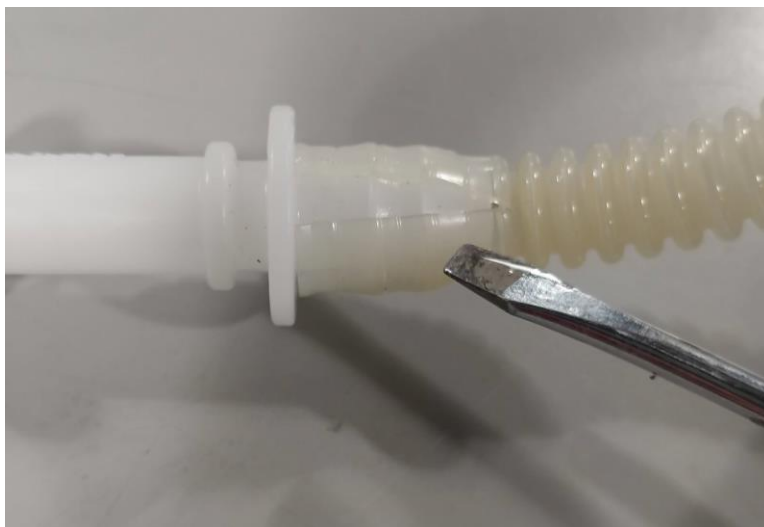
2 – Disconnect the OE electrical connector from the OE fuel pump (red arrow).



3 – Remove the OE fuel pump from the lower fuel pump assembly by removing the OE filter sock (yellow arrows). Then remove the lower cap from the Lower fuel pump assembly (red arrows). Press inward on all the tabs on both the filter sock and the lower cap to remove them. Remove the OE fuel pump from the lower assembly by sliding the pump out. Slide off the upper rubber isolator from the OE fuel pump (blue arrow).



4 – Remove the OE fuel fitting from the OE hose. Using a razor blade carefully cut a small slit down on the hose without damaging the OE fitting. You will be reusing the OE fuel fitting. You can discard the following OE parts: fuel pump, filter sock and fuel hose.



5 – You are now left with all the parts needed to be reused and installed onto your DW fuel pump as shown below.



6 – Install the rubber isolator onto the DW fuel pump (red arrow). Preinstall the larger permanent clamp onto the larger end of the supplied hose, slide this end of the hose onto the reused OE fuel fitting. Preinstall the smaller clamp onto the smaller end of the hose then slide this end of the hose onto the outlet of the DW fuel pump outlet. Make sure the hose is slid all the way onto the OE fuel fitting and the DW fuel pump. The hose will bottom out on both the OE fuel fitting and the DW fuel pump.

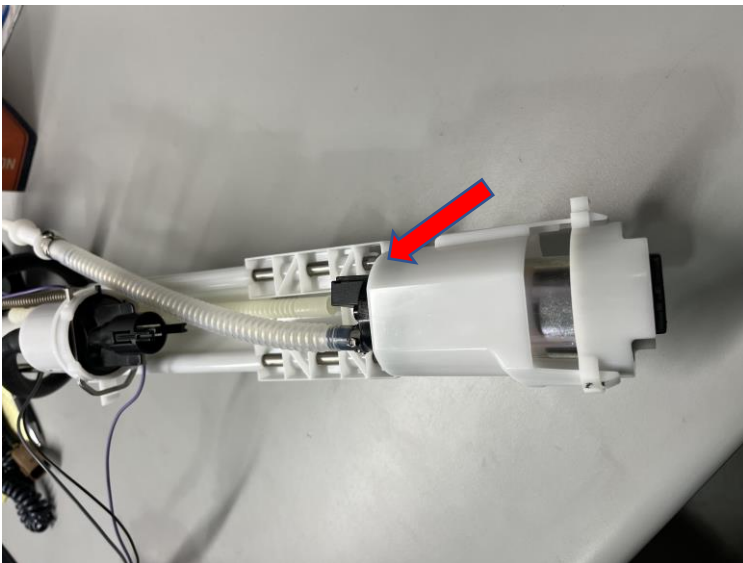


7 – Place the permanent clamps onto the OE fuel fitting and DW fuel pump outlet in the positions shown below (red arrows). Squeeze the permanent clamps down firmly in place with crimpers or side cutters.

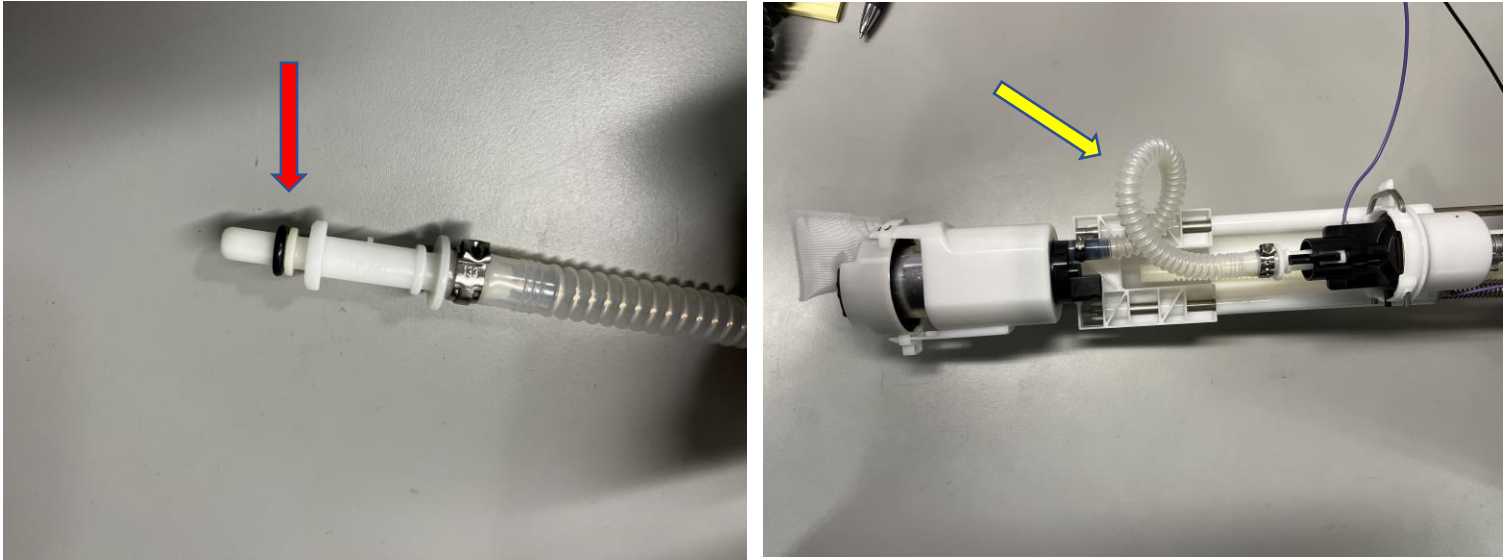
NOTE: A firm amount pressure on the clamp is needed, but do not overtighten as the clamps will break.



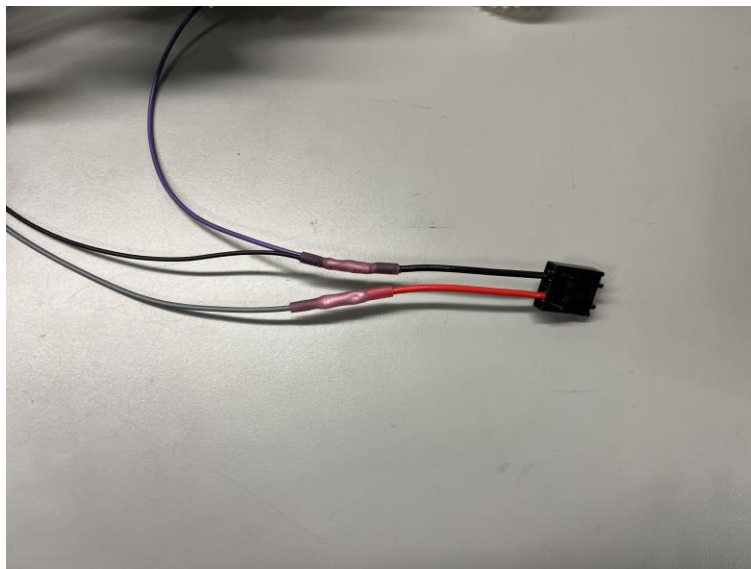
8 – Slide the DW fuel pump and installed hose through the lower fuel pump assembly in the position shown below (red arrow). Now install the lower cap and rubber isolator on the bottom of the DW fuel pump. Verify all (3) tabs are locked into place on the lower cap. Install the provided filter sock with the provided lock washer. Recommend using a small screwdriver or a small socket to press the lock washer on the filter stud until it is fully seated (Yellow arrow).



9 – Verify the OE O-ring is installed back onto the OE fuel fitting. The O-ring may have stayed inside the opening of the inlet on the filter/PRV assembly, remove it from the inlet and re-install on the tip of the OE fitting as shown (red arrow). Install the OE fuel fitting back into the filter/PRV assembly fully until you hear a click. You will have to make a loop with the provided hose as shown (yellow arrow). Pull back and forth to verify the fitting is seated properly. Fully installed fitting as shown below (photo on the right).



10 – Cut approximately 3-4 Inches off the OE harness from the fuel pump side of the OE connector. Cut approximately 3-4 Inches off the provided connectors harness from the fuel pump side of the connector. Using wire strippers remove approximately a 1/4 inch of coating off each end of the OE harness and the provided connectors harness to install the provided butt connectors using wire crimpers. Black & Purple OE wire goes to the new black wire and the OE Grey wire goes to the new red wire. Use a heat gun to shrink the fuel safe butt connectors against the wires (picture shown below).



11 – Connect the electrical connector into the DW Fuel Pump (photo below).

Note: Make sure the connector is fully connected. It should not move when you pull back on it. When installing you should hear an audible click noise.



For additional technical support please contact us at: TechSupport@Deatschwerks.com or 405.233.3991