

9-101/201-1064

2007-2018 Harley Davidson Sportster Fuel Pump Installation Guide

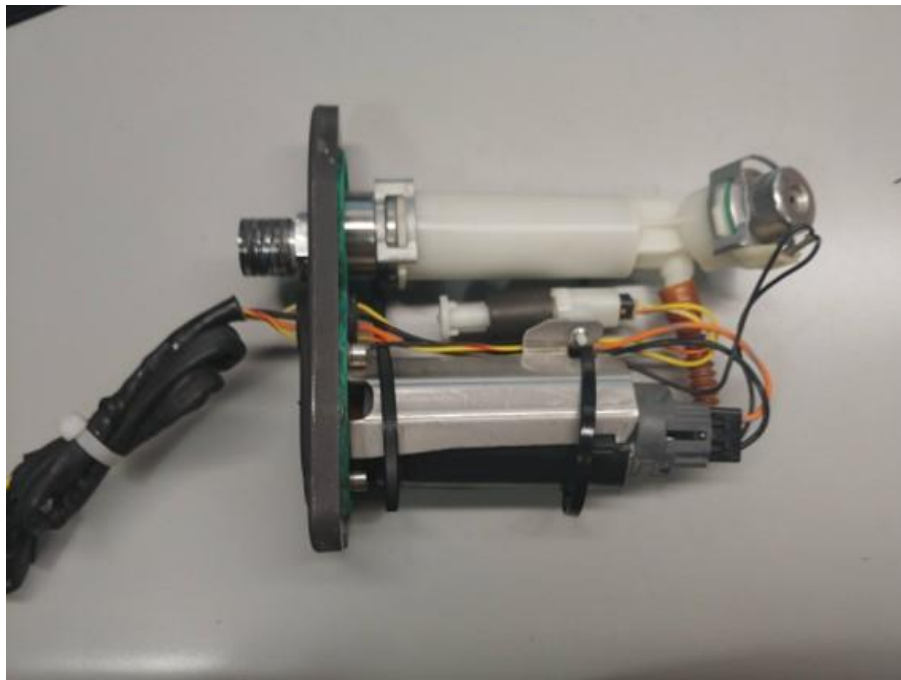


Included Parts:

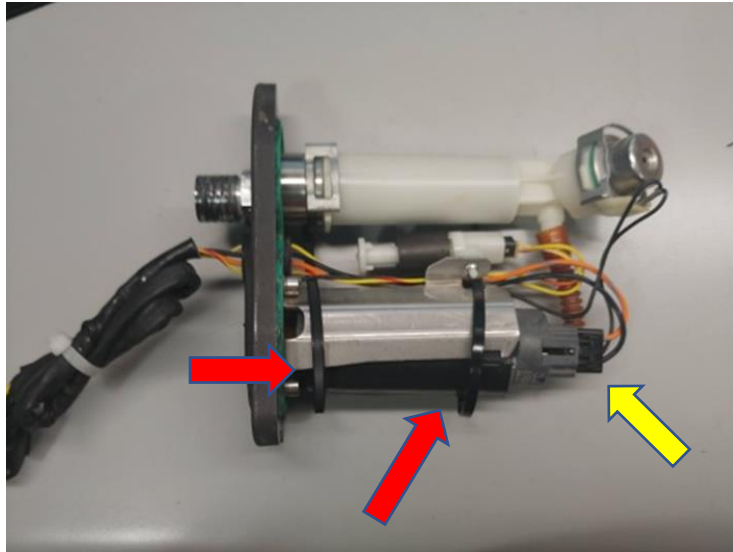
- DW100/200, 9-101/9-202 Fuel Pump
- Fuel Filter Sock
- 2-Zip Ties
- 1-5/16 to 3/8 9-inch Hose
- 2- 13.3mm Permanent Clamp
- 2- 11.3mm Permanent Clamp

PLEASE READ: This guide is intended to aid in the installation of our products. It is recommended that factory manuals or instructions are followed to remove the fuel pump assembly from the vehicle. Instructions in this guide are generic and are intended to aid in the installation of a DW100 or DW200 fuel pump. The factory manual should supersede any contradiction.

Below is a picture of some suggested tools that will make the installation process easier.



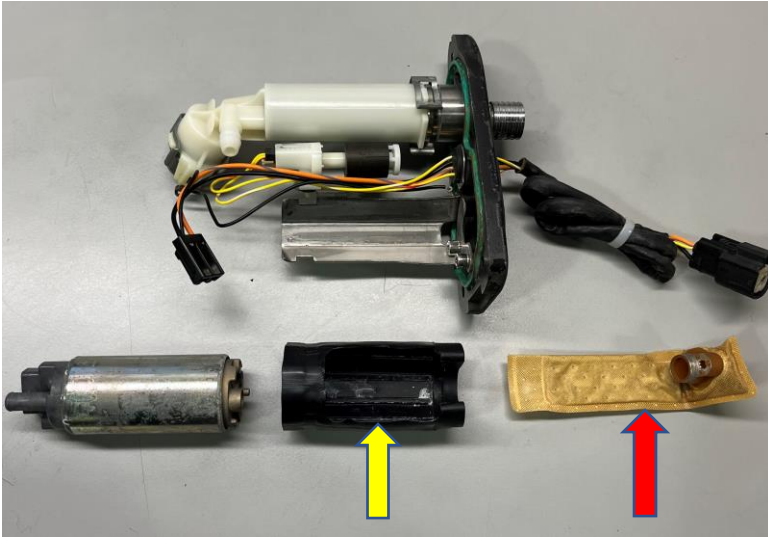
1 – Cut the (2) OE zip ties that go around the OE fuel pump (red arrows). Remove them fully from the fuel pump and fuel pump assembly. Disconnect the OE fuel pump electrical connection (yellow arrow).



2 – Remove the OE fuel hose from the filter/PRV assembly and the OE fuel pump (red arrows). Using a razor blade carefully cut a small slit on both ends of the OE hose without damaging any of the parts you are removing the hose from then pull the hose off.



3 – Slide the OE fuel pump out of the fuel pump assembly. Remove the OE filter sock off the OE fuel pump by pulling it off the bottom of the pump (red arrow). Remove the OE isolator off the OE fuel pump by sliding it off from the bottom of the pump (yellow arrow). You can discard the following OE parts: fuel pump, filter sock, fuel hose and zip ties. You are now left with all the parts needed to be reused and installed onto your DW fuel pump (photo on the right).

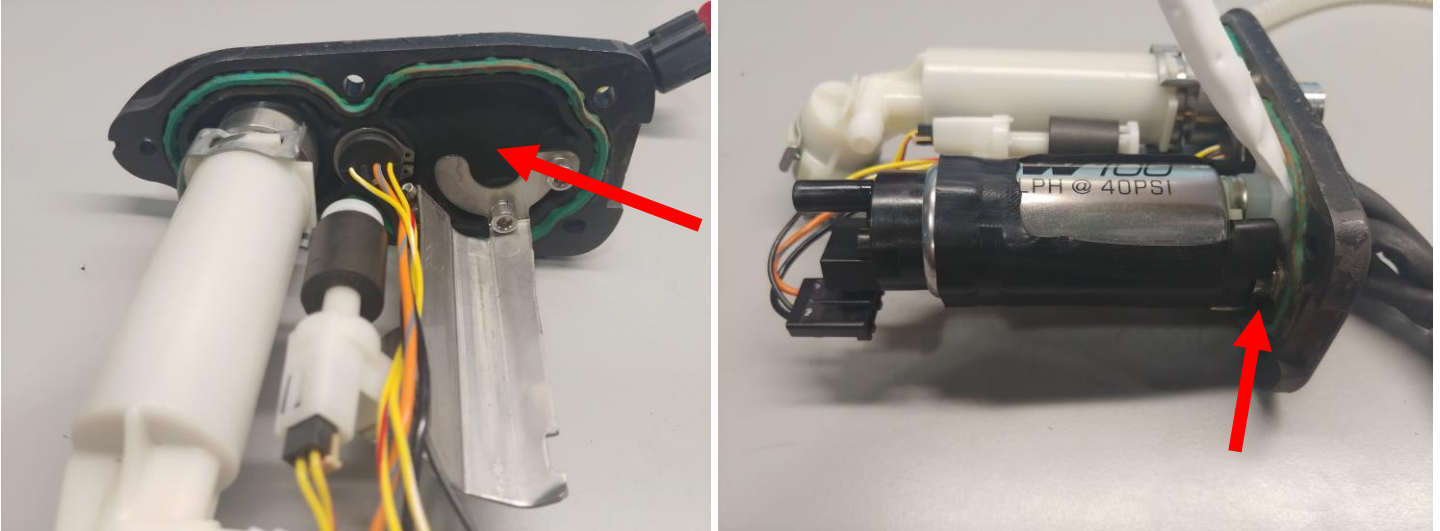


4 – Install the OE isolator onto the DW fuel pump from the bottom in the direction shown (red arrow). Install the supplied filter sock onto the DW fuel pump. Make sure the filter sock and lock washer are fully seated on the fuel pump inlet port and filter stud in the direction shown (photo on the right).



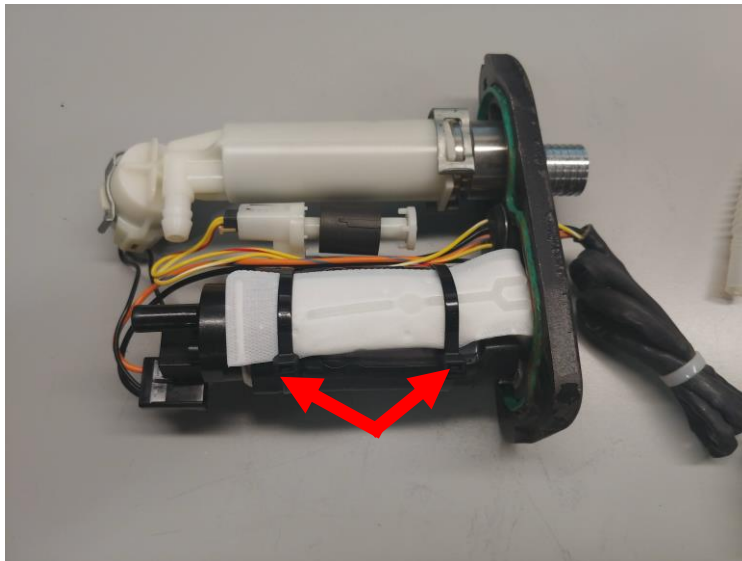
5 – Slide the DW fuel pump onto the fuel pump assemblies metal bracket. The filter sock will bottom out against the assembly housing in the direction shown below (red arrows).

Note: The rubber isolator has relief cuts for the bolts. Make sure it is flush with the base of the pump and pump assembly.



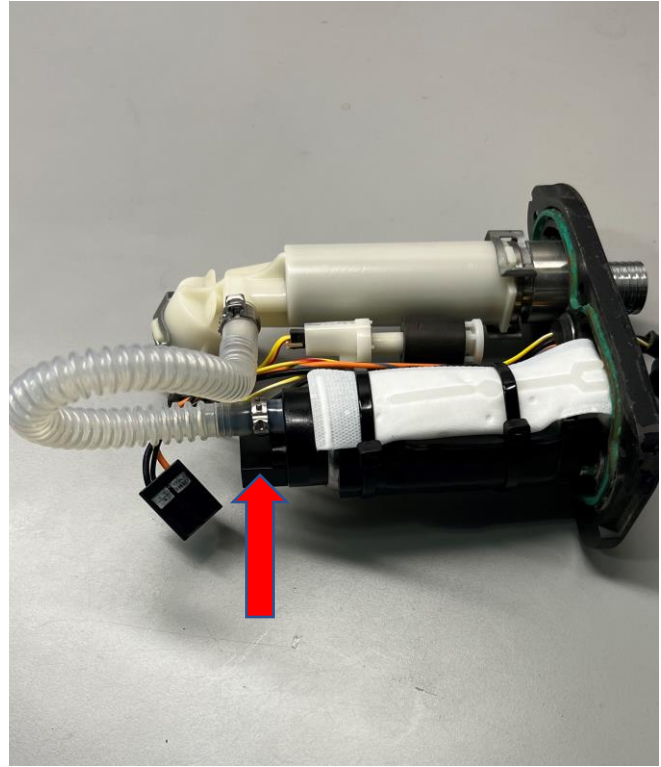
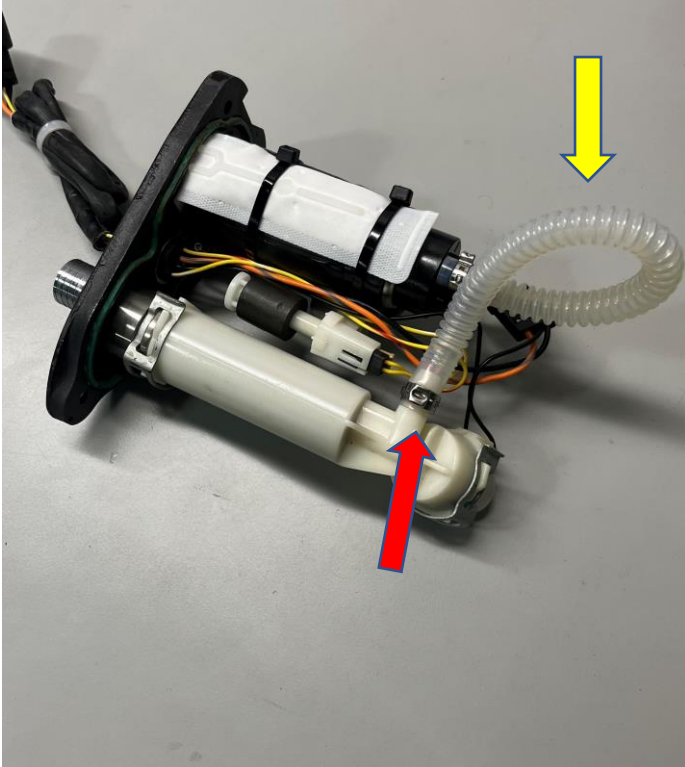
6 – Install the supplied (2) zip ties to the fuel pump around the pump assembly metal bracket and the DW fuel pump (red arrows). You will gently bend the filter sock down against the body of the pump as shown below. Verify the zip ties are tightened fully. Cut the ends of the zip ties off using a pair of side cutters for cleaner appearance and better fitment into the tank.

Note: The zip ties are the only pieces securing the fuel pump to the fuel pump assembly. Verify they are fully tightened against the pump and pump assembly metal bracket.



7 – Install the supplied fuel hose onto the DW fuel pump and the filter/PRV assembly. Preinstall a larger permanent clamp onto the larger end of the provided hose. Slide this end of the hose onto the filter/PRV inlet. The hose will bottom out onto the inlet hose barb. You will have to make a loop with the provided hose as shown (yellow arrow). Preinstall a smaller permanent clamp onto the other end of the hose. Slide this end of the hose onto the outlet of the DW fuel pump until it bottoms out onto the fuel pump. Tighten both clamps in the direction shown below (red arrows). Squeeze the permanent clamps tight using crimpers or side cutters.

Note: A firm amount pressure on the clamp is needed, but do not overtighten as the clamps will break.



7 – Connect the electrical connector into the DW fuel pump (photo below).

Note: Make sure the connector is fully connected. It should not move when you pull back on it. When installing it you should hear an audible click noise.



For additional technical support please contact us at: TechSupport@Deatschwerks.com or 405.233.3991