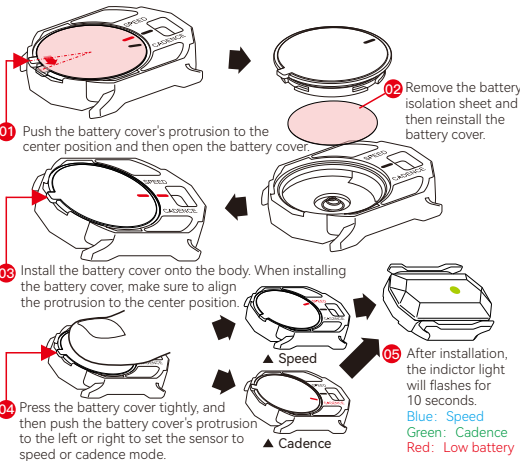


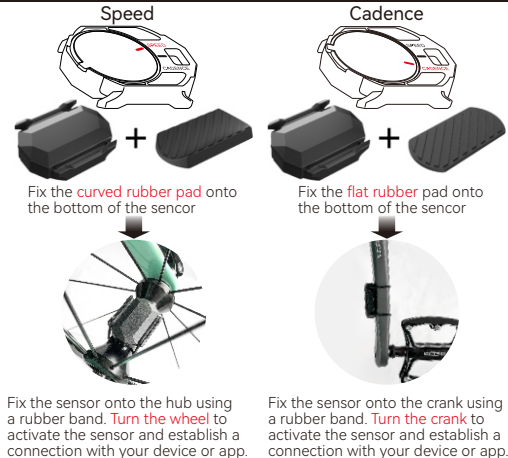


Speed/Cadence Sensor C3  
User Guide

### Quick Start



### Fix to Bicycle



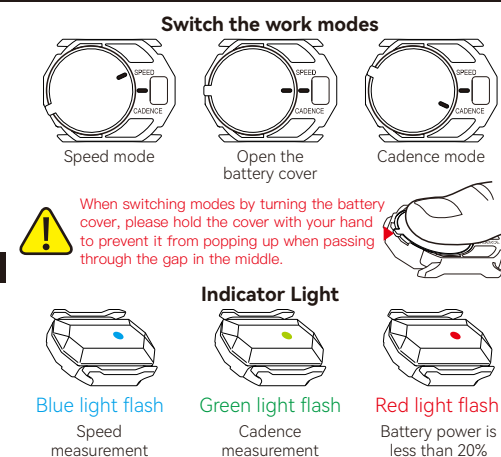
### Instructions for Use

- Before using, please open the battery cover, and remove the transparent insulation spacer.
- One sensor cannot measure both speed and cadence simultaneously. If you need to measure both, please purchase two sensors.
- For speed measurement, the hub width must be more than 38mm.
- The product defaults to cadence measurement. The Bluetooth name is CYCPLUS S3 when used for speed measurement.
- When using Bluetooth protocol, it can only be connected to one device or app at a time. To change the device or app, please disconnect the previous one first.
- When using the ANT+ protocol, it can be connected to multiple devices simultaneously.
- When using a smartphone app, search for the sensor in the app. Searching via phone Bluetooth is invalid.

### Specifications

- Dimension: 9.5mm×29.5mm×38.0mm
- Weight: 9.2g
- Battery: 220mAh CR2032
- Usage time: 600 hours (Cadence) / 400 hours (Speed)
- Standby time: 300 days
- Protection rating: IP67
- Compatible with: Garmin, Wahoo, Zwift, Tacx, BLjton, XOSS, Blackbird, and other devices
- Protocol standards: The sensor can connect to any APPs or devices that support Bluetooth or Ant+.

### Summary



### Factory Info

Manufacturer:  
 Chengdu Chendian Intelligent Technology Co., Ltd  
 Warranty: One-year free replacement or repair  
 After sale E-mail: [steven@cycplus.com](mailto:steven@cycplus.com)

EC	REP	EUBRIDGE ADVISORY GMBH Virginia Str. 2 35510 Butzbach, Germany <a href="mailto:eubridge@outlook.com">eubridge@outlook.com</a>
UK	REP	TANMETINT'L BUSINESS LTD 9 Pantygraigwen Road, Pontypridd Mid Glamorgan, CF37 2RR, UK <a href="mailto:Tanmetbiz@outlook.com">Tanmetbiz@outlook.com</a>

CE UK CA

FR  
 Cet appareil, ses accessoires et piles se recyclent

À DÉPOSER EN MAGASIN ou À DÉPOSER EN DÉCHÈTERIE

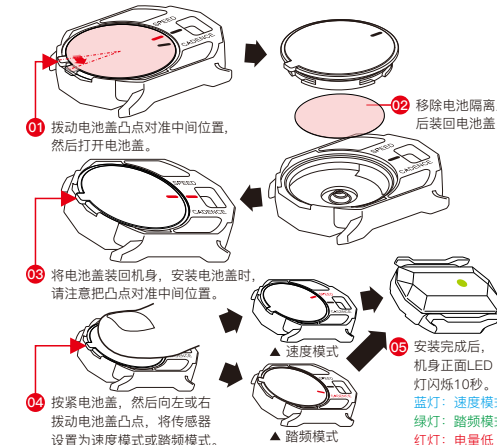
Points de collecte sur [www.quefairedemesdechets.fr](http://www.quefairedemesdechets.fr)  
 Privilégiez la réparation ou le don de votre appareil !



速度踏频两用传感器 C3

用户指南

### 快速使用指南



### 安装到自行车



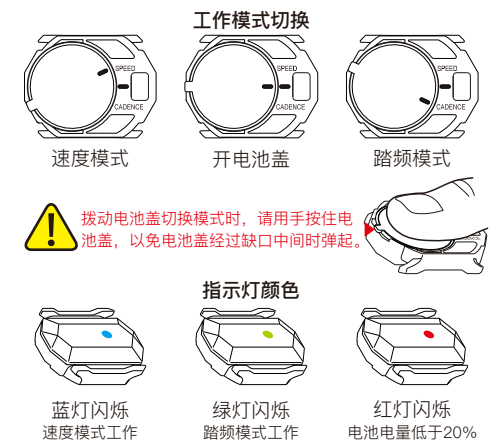
### 使用须知

- 使用前，请先取下电池后盖，取出透明的电池隔离片。
- 1台传感器无法同时测量速度和踏频，如需同时测量两个数据，请购买2台传感器。
- 用于速度测量时，花鼓内侧空间宽度必须大于38mm，方可正常安装。
- 出厂默认功能为踏频测量，用作踏频传感器时蓝牙名称为CYCPLUS C3，用作速度传感器时蓝牙名称为CYCPLUS S3。
- 使用蓝牙协议时只能同时支持被一个设备或者APP连接，要更换设备或者APP时请先断开连接。
- 使用ANT+协议时可同时被多个设备连接。
- 使用手机APP时需要在APP内搜索传感器，通过手机系统蓝牙功能搜索无效。

### 产品参数

- 尺寸：9.5mm×29.5mm×38.0mm
- 重量：9.2克
- 电池：220mAh CR2032
- 续航：600小时（踏频）/ 400小时（速度）
- 待机时长：300天
- 防护等级：IP67
- 适用对象：Garmin\Wahoo\Zwift\Tacx\Bryton\行者\黑鸟等
- 协议标准：本产品支持ANT+和蓝牙双协议，可用于各种支持ANT+或蓝牙协议的设备和APP

### 功能图示



### 制造商信息

制造商：成都晨电智能科技有限公司

保修政策：一年内免费保修或换新

售后邮箱：steven@cycplus.com

EC	REP
----	-----

EUBRIDGE ADVISORY GMBH  
 Virginia Str. 2  
 35510 Butzbach, Germany  
 eubridge@outlook.com

UK	REP
----	-----

TANMETINT'L BUSINESS LTD  
 9 Pantygraigwen Road, Pontypridd  
 Mid Glamorgan, CF37 2RR, UK  
 Tanmetbiz@outlook.com



MADE IN CHINA