

Nala Office Chair

Product Code: MOMT341A-B

Lead Time Guide: 2 - 4 weeks

OVERVIEW

With sleek and light design lines, Nala is the go-to choice for meeting room and boardroom applications. Responsive and free, Nala self-adjusts to your movements with its weight activated auto-balance mechanism. Nala is very easy to use, with no fiddly levers, just one integrated height adjustment fingertip control.

Nala's frame is available in black only and the soft touch mesh fabric is available in several colours. Nala is supplied fully assembled, ready to use.



SPECIFICATIONS

140kg Recommended Weight Capacity

Chair Dimensions (mm)

O/A Height: 950 – 1045~

O/A Width: 590~ (arms)

O/A Depth: 640~

Seat Width: 500~

Seat Depth: 440~

Back Width: 465~

Back Height: 540~

Seat Height: 440–535 ~

FEATURES

Black Frame

Weight Activated Auto-Balance Mechanism

‘Soft Touch’ Fabric Mesh

Integrated Armrests

Fingertip Seat Height Adjustment

ANSI/BIFMA X5.1 Certified

140kg Recommended Weight Capacity

5 Year Warranty

OPTIONS 1 / BASE

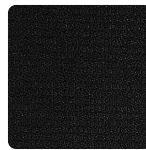


Black Nylon Base

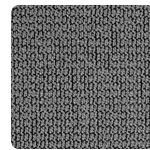


Polished
Aluminium Base

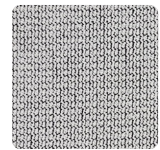
OPTIONS 2 / MESH COLOUR



Black



Charcoal



Light Grey

RELATED PRODUCTS



Pele Executive Office Chair



Freya Task Chair



Due to constant innovation, products may be subject to design and specification changes without notice. Copyright ©2022.

Colour Disclaimer Colours may vary due to computer screen variations. Please always check actual samples for confirmation to be sure. **Product Disclaimer** Please note our specifications and features are subject to change without notice. For our full T&C's click [HERE](#).