

USER'S MANUAL

PLEASE READ THE MANUAL CAREFULLY BEFORE USE

4G-LTE
CELLULAR TRAIL CAMERA ◀

Content

Safety and warning.....	1
About this manual.....	3
1 About the camera.....	3
1.1 Main features.....	4
1.2 Picture Presentations	4
1.2 Functions of keys.....	4
2 Start to use.....	5
2.1 Installation of the Nano SIM card and memory card.....	5
2.2 Installation of batteries.....	5
2.3 Installation of antenna.....	6
2.4 Using external power supply.....	7
2.5 Installation and fixation of camera.....	7
2.6 Power on the camera.....	8
2.7 Switch working mode.....	9
2.8 Restore the default settings.....	9
2.9 Power off the camera.....	9
3. Use the camera.....	10
3.1 Monitor shooting.....	10
3.2 Setting and usage of mobile phone APP.....	10
3.3 Precautions for equipment use.....	14
4 Appendix.....	15
4.1 Common problems and solutions.....	15
4.2 4G network standard.....	16
4.3 Specification.....	17

Safety and warning

Safety and warning

Incorrect use of the camera and accessories may damage, destroy the camera or cause serious accident .

Please be sure to read and observe the following security warnings before using.

Hazards to people who are unable to use cameras

◇ ***Children or incompetent persons are not allowed to use the camera. Only normal adults should use the camera.***

Hazard of electric shock, fire or explosion

◇ ***If the camera is damaged or invaded by foreign matter, please turn it off immediately, otherwise there is a risk of fire or explosion.***

◇ ***Use of external power sources may cause electric shock or fire. Please keep the camera and the power supply dry and ventilated. Do not cover the camera with any objects.***

◇ ***Do not use external power during thunder or lightning, otherwise it may cause electric shock or other accidents.***

Safety use warnings

◇ ***Do not fall, hit, squeeze or puncture the camera.***

◇ ***Do not use any corrosive cleaners to clean the camera.***

◇ ***Keep away from high temperature or flammable materials, and do not put the battery into a fire, which may cause a fire or explosion.***

◇ ***Disassembling or self-repairing the camera is prohibited. If necessary, please contact a professional or dealer.***

Use, protection and storage

◇ ***The camera must be mounted in a secure place in case of accidents.***

◇ ***This camera has a rain-proof function and can be used in outdoor environments.***

◇ ***This camera cannot dive and prohibit dipping the camera in water.***

◇ ***Do not use the camera upside down. All latches and waterproof plugs must be fastened before work.***

◇ ***All locks and plugs must be fastened before work.***

◇ ***If you are not using the camera, you must remove the battery and store it in a dry place***

◇ ***Impingement, fall and other man-made damage is not covered by the warranty, need to pay for repair.***

Proper disposal of waste

◇ ***Do not dispose of the camera and accessories as household garbage. Do not discard them at will.***

◇ ***Please deal with the classification according to local law requirements. Please consult local authorities for details.***

Other warnings

◇ ***Please comply with relevant local policies and regulations regarding the use of wireless products.***

◇ ***Please comply with relevant local policies and regulations on personal privacy protection.***

About this manual

About this manual

- ◊ ***This manual is used as a general guide for the use of the camera. The pictures are for reference only.***
- ◊ ***We try to keep the content right. If the manual is not consistent with the camera due to the update or software upgrade, please refer to the material object without prior notice.***
- ◊ ***Due to the need to upgrade the user experience, APP may upgrade, adjust or increase the menu, features, please refer to the APP in practice without prior notice.***

Copyright and trademark information

We reserve the copyright and interpretation right of this manual. No unit or individual shall reproduce and disseminate in any form without written consent.

Microsoft and Windows are registered trademarks of Microsoft Corporation.

Pentium is a registered trademark of Intel Corporation.

Macintosh and IOS is a trademark of Apple Computer Inc.

Other names and products may be trademarks or trademarks registered by the relevant owners.

About the camera

1 About the camera

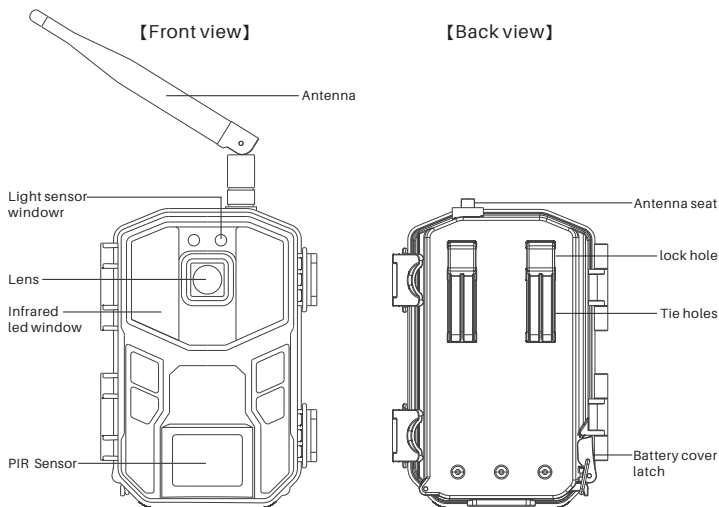
Thank you for buying this HD camera! If you have any problems in using it, please contact us in time.

1.1 Main features

It's a 4G-LTE camera that works automatically, when a person or animal enters the surveillance field of vision, the camera automatically takes photos or films and sends reminder messages to the phone. Users can enable real-time monitoring on the phone terminal and conduct voice prompts and other operations. It is widely applicable to monitoring, animal shooting, hunting, courtyard security and other application scenarios, especially adapted to outdoor, country use without power supply or wired networks. It has the following characteristics:

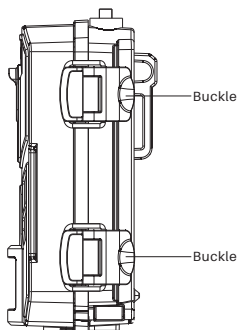
- ◆ Support 4G-LTE network
- ◆ Remote Access
- ◆ Two-way awaken
- ◆ mobile phone APP
- ◆ Cloud storage
- ◆ Live broadcast
- ◆ 14.0MP
- ◆ 2.7K video
- ◆ H.265
- ◆ 0.5s trigger time
- ◆ IP66 Dust and rain proof
- ◆ Infrared night vision
- ◆ Automatic working
- ◆ Dual power supply

1.2 Picture Presentations

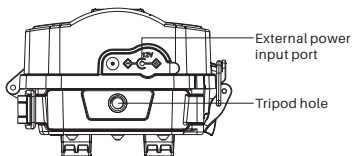


About the camera

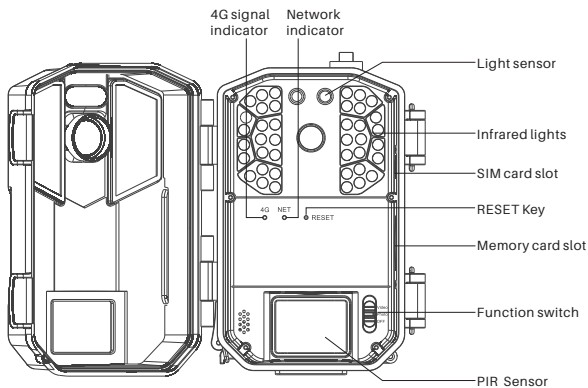
【 Right view 】



【 Bottom view 】





【 Expanded view 】



Start to use

1.3 Functions of keys

Icon	Key name	Functions
 Video Photo OFF	Function switch	OFF gear : Power off the camera. Turn off the power and the camera stops working. Photo gear: At this gear, camera takes photos when PIR sensing. Video gear: At this gear, camera records videos when PIR sensing.
 RESET	RESET key	Hold the 【RESET】 key 5 seconds for system soft reset and restart.

2 Start to use

This chapter will tell you about preparation for using the camera, including installation of the Nano SIM card, memory card, battery and so on.

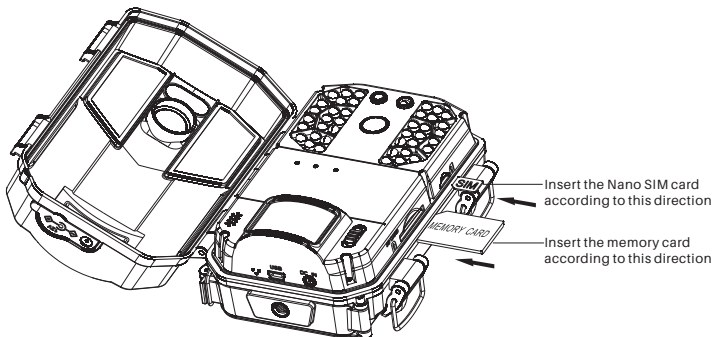
2.1 Installation of the Nano SIM card and memory card

2.1.1 The camera must be loaded with the SIM and memory cards to work properly. Before using it, please format the memory card with your mobile phone APP.

2.1.2 Open the buckles and open the face cover.

2.1.3. Insert the Nano SIM card into the camera and push inside until you hear a click. As shown: the angular end of the SIM card is pointed at the camera and the metal contacts are facing down.

2.1.4. Insert the memory card into the slot and push inside until you hear a click. As shown: the angular end of the memory card is pointed at the camera and the metal contacts are facing down.



Notice:

Do not unplug the Nano SIM and memory cards while the camera is working, otherwise, the Nano SIM and memory cards will be damaged.

Please use a Nano SIM card that meets local 4G-LTE network standards and consult local telecom communications providers.

Please use a qualified class 4 or above memory card. Poor-quality memory cards can cause the camera to be unrecognizable or inactive.

Start to use

2.2 Installation of battery

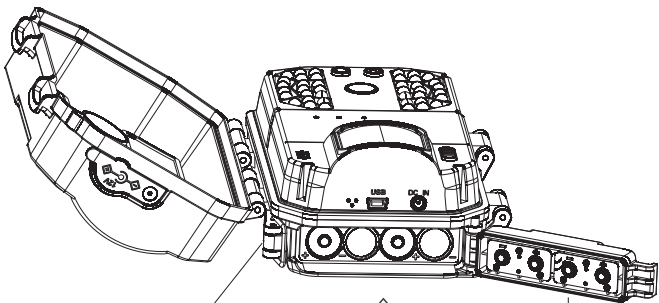
Please install the battery for the camera before use. The camera uses 8pcs AA batteries.

2.2.1 As the picture shown, remove the compartment latch and open the battery compartment cover.

2.2.2 Install 8pcs batteries according to the icon on the machine.

2.2.3 Keeping the battery compartment clean, covering the battery cover and lock the latches.

2.2.4 Toggle the 【Function switch】 to "Photo" or "Video" gear, if the network indicator is on, it indicates the battery is installed correctly.



1. Open the battery cover latch.

3. Install 8pcs AA batteries according to this direction.

2. Open the battery compartment door.

Notice:

Install the battery according to the specified direction, do not install reverse, do not mix old and new batteries.

Incorrect installation of the battery will not power on the camera and may damage the camera or risk.

After installation, the latch must be fastened, otherwise water or dust will damage the camera. If the camera is not used for a long time, remove all the battery to avoid damaging the camera.

2.3 Install the antenna

2.3.1 Remove the antenna seat dust cap on the top of the camera.

2.3.2 Install the antenna to the antenna seat and tighten clockwise

Notice:

The user may reference the local 4G network signal to adjust the direction of the antenna to obtain the optimal 4G signal.

Start to use

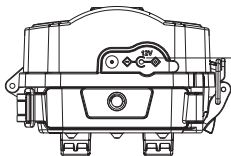
2.4 Using external power supply

When using the camera for long time, external power can be used to reduce battery usage.

2.4.1 Install the batteries according to the steps of 2.2, toggle the 【Function switch】 to “Photo” or “Video” gear.

2.4.2 Remove the waterproof glue plug of the camera DC IN interface and plug the external power supply into the camera DC IN interface.

2.4.3 Access the power source, the camera will automatically switch to the external power source after detecting the external power source.



1. Remove the waterproof glue plug.

2. Insert the DC-IN interface of the external power.

Notice:

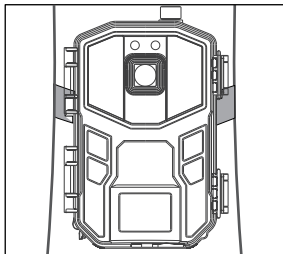
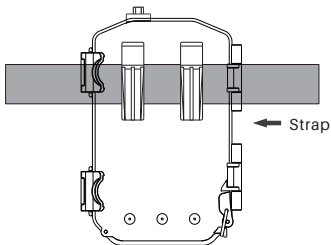
Please make sure to use the standard external power supply with specification: DC12V/1.5A. The battery is not removed when connecting the external power supply. Cover the waterproof adhesive plug without using the external power supply.

2.5 Installation and fixation of camera

To ensure the camera works safely, install the camera in a firm place, users can secure the camera by using a strap or bracket.

2.5.1 Installation with a strap

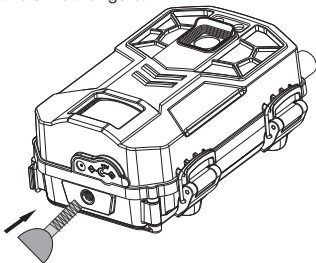
Use the strap through the back hanging hole of the camera, and then fasten the strap to a tree or other firm object, adjust the shooting angle of the camera and tie the strap. The figure is shown below:



Start to use

2.5.2 Fixation with the brackets

Install mounting bracket reliably on fixed object (e.g. on the wall or on the tree), screw the bracket screw into the screw hole at the bottom of the camera and tighten it. Adjust the camera shooting angle and tighten all the screws. Below is the figure:



Screw the bracket screw into the camera tripod screw hole and tighten clockwise

Notice:

After the camera is installed, lock all buckle and cover all waterproof plugs.

If the camera is installed close to the ground, ensure that the bottom of the camera is more than 20CM from ground.

2.6 Power on the camera

2.6.1 Toggle the **【Function switch】** to "Photo" or "Video" gear, the 4G signal indicator and network indicator will light up, indicating the camera is on.

2.6.2 The 4G signal indicator can display three states, as shown below:

Indicator color	The meaning of the representation
Red	Represents a weak 4G signal
Green	Represents a moderate 4G signal
Blue	It indicates a strong 4G signal

2.6.3 The networking indicator can display two states, as shown below:

Indicator color	The meaning of the representation
Solid red light	Indicates that the 4G networking has failed
Solid blue light	Indicates that the 4G networking is successful

2.6.4 If the 4G signal indicator is red and the networking indicator is flashing red and blue quickly, indicating that the camera does not insert the Nano SIM or the Nano SIM is not detected.

2.6.5 If the 4G signal indicator shows red, while the networking indicator is flashing red and blue slowly, indicates that Nano SIM was inserted but no 4G network signal.

Notice:

To save power, the indicator automatically turns off after a period of time. The camera indicator can be activated by any operation on the mobile APP.

Start to use

2.7 Switch working modes

The camera operates in two working modes: video mode or photo mode.

2.7.1 When the 【Function switch】 is in the "Video" position, the camera will automatically default to "Video Mode", in this mode, video recorded automatically when the camera senses the signal;

2.7.2 When the 【Function switch】 is in the "Photo" position, the camera will automatically default to "Photo Mode", in this mode, the photo taken automatically when the camera senses the signal;

2.8 Restore the default settings

If the user's incorrect settings menu causes the camera to not work properly, the camera's reset function can be used.

2.8.1 Keep the camera is powered on, and the 【Function switch】 is in "Photo" or "Video" gear.

2.8.2 Insert the RESET hole with a fine pin and press the RESET key for 5 seconds, restore the camera to the factory default.

2.8.3 After the reset, you must delete the camera in the mobile phone APP and then add the camera in the phone APP again to continue to use and operate the camera.

Notice:

After the default settings, the camera menu returns to the factory settings.

This action does not delete saved photos or video files.

2.9 Power off the camera

2.9.1 Push the 【Function switch】 to "OFF" gear, the camera will be completely shut down.

2.9.2 After the camera is off, it only can be turned on again after waiting 3 seconds.

2.9.3 If the camera is not used for a long time, remove all the batteries in the camera.

Notice:

The camera will automatically save the file if the 【Function switch】 is pushed while the camera is working.

Use the camera

3 Use the camera

This chapter tells you how to use the camera and operate on your phone APP.

3.1 Monitor shooting

Insert the SIM and memory cards into the camera, install the batteries and turn on the camera, check that the camera is working properly. Install the camera into the shooting area and adjust the camera height and direction to ensure the lens is aligned to the shooting range.

The camera matches the mobile phone APP for "UCON", open the APP "UCON", log in and set relevant parameters, the camera will enter the monitoring and shooting state. At the moment, it can automatically monitor and photograph active animals or people in the range of vision, and view the picture in real time.

Notice:

1. When using the camera, the lens should aim at the shooting range.
2. Battery life can vary in different modes or environments.

3.2 Setting and usage of UCON APP

3.2.1 Scan the QR code to download and install the APP

Please scan the QR code below to download and install "UCON" APP

IOS Mobile
phone



Android mobile
phone



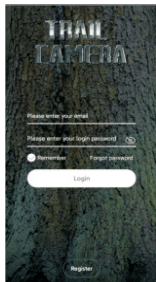
3.2.2 You can also search directly at the App Store for "UCON" APP, download and install to the phone.

Android phone: Search at the Google Store for "UCON" APP download.

IOS cell phone: Search at App store for "UCON" APP download.

3.2.3 Register and login account

3.2.3.1 Open the "UCON" APP on the phone, click "Register", and follow the phone screen prompt to register.



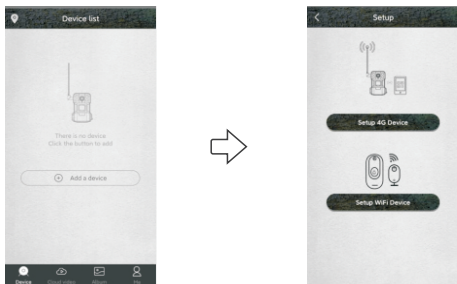
Use the camera

3.2.3.2 Set the login password, enter the verification code, and click "Register".

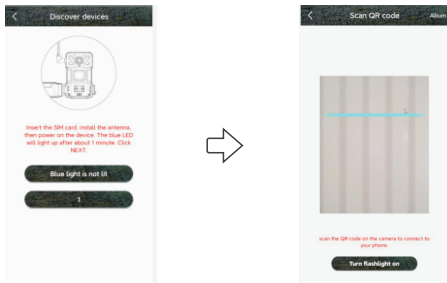
3.2.3.3 After successful registration, enter the account, password, and click "Login".

3.2.4 Add the camera

3.2.4.1 Click "Add a device" and select "Setup 4G Device".



3.2.4.2 When the network indicator is always blue, use your mobile phone to scan the QR code on the device.



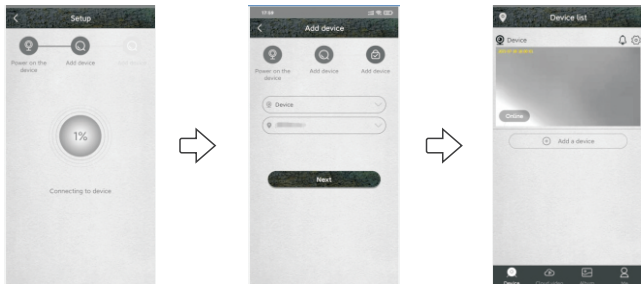
Notice:

Please add the camera where the 4G network signal is good to make sure both the camera and the phone have good signals.

Poor signal may cause a failure to add the camera or use the remote functionality.

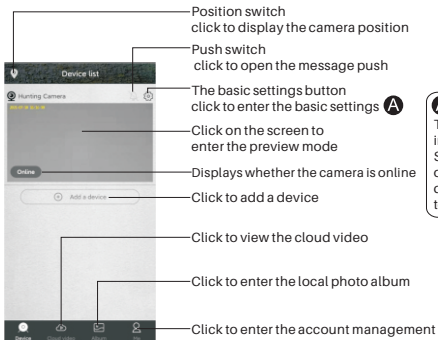
Use the camera

3.2.4.3 After a successful scan, wait for the connection. Enter the device name and address after the connection is successful, and click "Next" to complete the addition of the device. After the camera is successfully added, the phone APP will display the camera preview of the current picture, showing "online" in the bottom left corner.



3.2.5 Usage instructions of APP

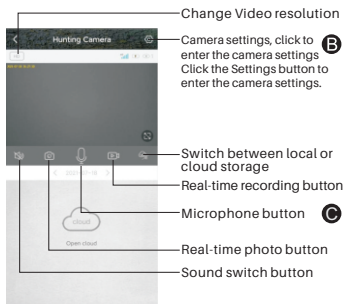
3.2.5.1 Open the APP on the phone, it is shown as follows, please refer to the mobile phone APP for relevant action.



A The following settings are available in the basic settings. Set remote mode, sharing equipment, open cloud service, 4G traffic service, delete equipment, etc., specific refer to the mobile APP prompt operation

Use the camera

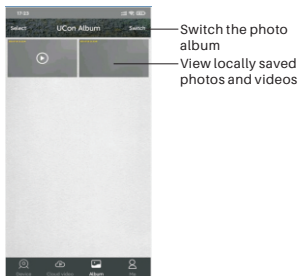
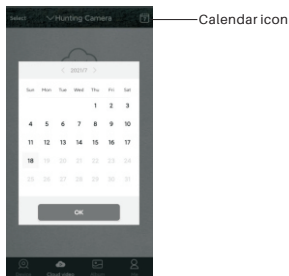
3.2.5.2 After clicking on the screen to enter the preview mode, the APP displays as follows, relevant operations can be performed:



B
In the setting menu, users can set: device name, working mode, image rotation, storage management, environment mode, PIR trigger interval, PIR human detection, sleep-delay, power frequency, LED indicator light, synchronization time and online time. Specific refer to the mobile phone APP prompt operation.

C
Turn on the microphone, the phone can speak to the camera or talk with the camera in two-way.

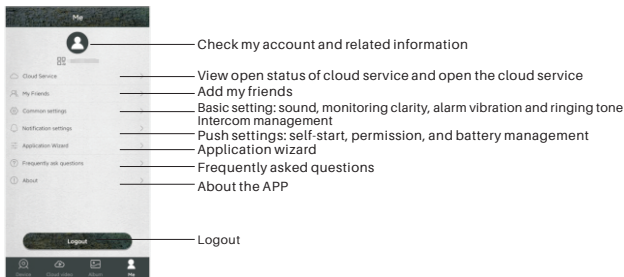
3.2.5.3 Click the cloud video icon, enter the playback interface of cloud video, it is shown as follows. Click the calendar icon, select a date to view all the cloud videos for the current date, and conduct relevant operations.



3.2.5.4 Click the local photo album icon, enter into the local photo album, display as the figure above, users can conduct relevant operations.

Use the camera

3.2.5.5 Click the account button to enter the account management, the APP is shown as follows, users can perform relevant operations:



3.3 Precautions for equipment use

3.3.1 The number of wake-ups and shots of the camera will affect battery life, and using a 4G function or shooting at night will consume more power. When using battery power, please set camera parameters reasonably. It is recommended to set remote working mode to one-way mode, PIR detection to low sensitivity and PIR trigger interval to long time. If the battery power is insufficient, the mobile phone APP will have a prompt. Please replace the new battery in time after receiving the prompt.

3.3.2 If the camera is long using 4G, night work or high frequency shooting, external power is recommended.

3.3.3 Please use the 4G function where the network signal is good. If the local signal is weak, it may cause the camera to go off line or fail to operate remotely. If this happens, adjust the antenna orientation or the position of the camera installation.

3.3.4 This device has two remote modes: two-way mode and one-way mode.

Two-way mode: It is mainly used for remote real-time preview and setting operations; two-way mode consumes a lot of power and is only suitable for setting options. After the setting, change the mode to one-way mode.

One-way mode: the camera automatically enters the PIR induction capture, it is only activated to capture when the target is detected, and prompts the phone. One-way mode is more power-saving, so one-way mode is recommended.

3.3.5 This camera is a intelligent product, which can support APP remote wake-up and infrared detection wake-up, and automatically enter the dormant state after each wake up work is completed.

3.3.6 This device provides free cloud video service for one month. If you need to continue to use the value-added service after the trial period, you need to purchase it from the APP.

Appendix

4 Appendix

4.1 Common problems and solutions

Problem	Potential cause	Solution
Can't be powered up	Low battery or wrong battery model	Replace the correct type of battery with a full charge.
	Incorrect battery installation	Refer to the instruction manual to install the battery correctly.
	There is a foreign body in the battery compartment	Check the battery compartment for foreign matter and clean it.
	Incorrect specification or connection of external power supply	Use a suitable external power supply and connect it properly.
	Operating temperature is too high or too low	Use it where the temperature is right.
The camera suddenly shuts down	The battery is low.	Replace a fully charged battery or use an external power source.
Photography is normal during the day, but it is dark at night	Low power or insufficient external power supply current, the infrared lamp does not work properly	Replace a fully charged battery or use an external power source.
Do not read cards or save files	Power failure before file storage	Replace a fully charged battery or use an external power source.
	Memory card speed is too slow	Replace memory cards with write speed of class 4 or above.
	Memory card is damaged or not up to specification	Replace a qualified memory card and format it with your camera.
The camera crashed while working	Low battery power or external power does not meet the requirements	Switch to a new battery or an external power that meets the requirements.
	Memory card is damaged or poor quality	Replace qualified memory card, format the memory card with the camera, restore the camera to its default settings, and restart
Cameras consume a lot of power	The camera setting of PIR interval time is too short	The PIR interval can be adjusted properly to extend the battery life.
	The camera setting of PIR sensitivity is too high	The sensitivity of the PIR is appropriately lowered to extend the endurance.
	There are more photos and videos taken at night	Infrared light at night consumes a lot of power. If you take more photos or videos at night, you need to use external power.
	Two-way mode enabled, or long use of 4G functionality	Switch to one-way mode, or reduce time for using 4G
	The above parameters are the balance between camera performance and battery life. Users can make reasonable adjustments according to the instructions and personal needs in order to obtain reasonable results and battery life.	

Appendix

Problem	Potential cause	Solution
The camera leaks or fogs up	Waterproof ring falls off or there is a foreign body on the waterproof ring	Check the waterproof ring, keep the waterproof ring clean, waterproof ring can not pop up, become warped.
	Failure to fasten the latch properly or plug the waterproof rubber stoppers for external power supply	Before the camera works properly, all locks must be fastened, waterproof rubber stoppers must be plugged.
	Improper use, such as putting the camera in water	The camera are rainproof, but absolutely do not put into the water
	Install or place the camera incorrectly, such as upside down	The head of the camera must be up and mounted as vertically as possible. make sure the bottom of the camera is at least 20CM from the ground.
	The camera can work in raining. If the camera fogs or gets water, shut it off immediately and remove the battery. Wipe off any water or fog with a dry towel, then open the cover and place it upright in a ventilated area to dry completely before using.	
Not working properly when using external power supply	Poor power contact	Check each interface to ensure that they are firmly connected.
	External power supply error	Replace the qualified external power supply.
No 4G signal is shown	The nano SIM card is not inserted	Insert the nano SIM card as required
	The contact of nano SIM card is not good	Clean the nano SIM card contacts, and reinstall it.
	There is no 4G signal in the region	Move the camera to a served area for use
	The telecommunication operator did not provide its services	Contact the local operator
Remote transmission speed is slow	4G network signal is weak	Move the camera position, or adjust the antenna direction to maintain a good 4G signal
	The operator's speed is slow	Consulting with the local operators
Other questions	The camera can be turned on, but there are other abnormal problems	Try the following way: 1. Replace a fully charged battery. 2. Replace a qualified memory card and format it with the camera. 3. Return the camera to the default settings and restart.
If the above method cannot solve the problem, the camera may be damaged, please contact the dealer.		

4.2 4G network standard

The camera is classified into European and North American versions based on the network standard supported by the camera. Please select the version based on the local 4G network standard.

European version	It is suitable for use in Europe in accordance with the following 4G standards: LTE-FDD:B1/B3/B5/B7/B8/B20 LTE-TDD:B38/B40/B41; HSPA:B1/B5/B8; GSM:900/1800
The north American version	It is suitable for use in North America in accordance with the following 4G standards: LTE:B2/B4/B12; WCDMA:B2/B5 LTE-FDD : B2/B4/B5/B12/B13/B14/B25/B26/B66/B71; LTE-TDD : B41 LTE:B2/B4/B5/B13

Appendix

4.3 Specification

Sensor	CMOS sensor , Max 14MP(interpolation)
Storage medium	Support SD card, Max to 128GB
Lens	F=2.5 f=8.7mm
PIR trigger time	0.5s
IR Leds	940nm/40pcs
PIR sensitivity	Adjustable (High/Middle/Low)
PIR sensitive distance	0~20m
PIR angle	90°
PIR delay	10s~5min (Optional)
Working Mode	Photo mode/Video mode
Photo resolution	Format : JPEG Resolution : 14M
Video resolution	Format : MP4, support H.265 Resolution : 2.7K
Video Length	5s
Microphone	Yes, Built-in
Speaker	Yes, Built-in
Remote operation	Support, mobile phone remote operation, Two-way awakening
Mobile APP	Yes, APP Name: UCON
Live broadcast	Yes
Cloud storage	Yes
Working voltage	DC 12V
Battery	8pcs AA batteries
External power supply	DC 12V 1.5A
SIM card	Nano SIM card
System language	Automatic, switching with mobile phone system
Stand-by time	150days (8pcs AA batteries)
Working temperature	-10°C~40°C
Storage temperature	-20°C~60°C
Waterproof level	IP66
Dimensions	105 (L) ×69 (W) ×342 (H) mm (including antenna)
Weight	Approx 297±5g(battery excluded)

All pictures in the manual are for reference only, please make the object as the standard. All the data and parameters are subject to change without notice. We reserve the right of final explanation.

FIP210902E20G-A1(English)

4G-LTE
CELLULAR TRAIL CAMERA ◀