

XR Quick Programming Guide

****Important – Before you start ****

Steps 1 & 2 are required to be completed via keypad before any programming
Always default the panel before Programming

Default Pin Codes

Installer (user 256) - 9713

Master (user 1) - 1234

Programming methods

Method 1: Keypad (Page 2-7)

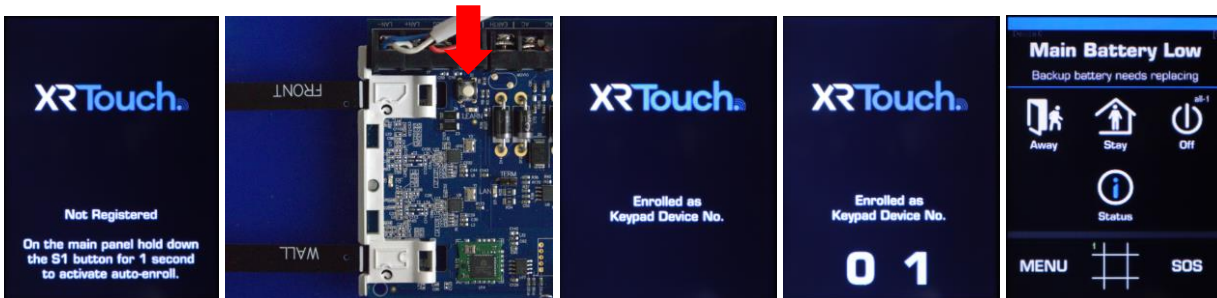
Method 2: Web Browser (Page 8)

Method 3: Ultrasync+ App (Page 9)

Method 4: DLX900 (not covered in Guide)

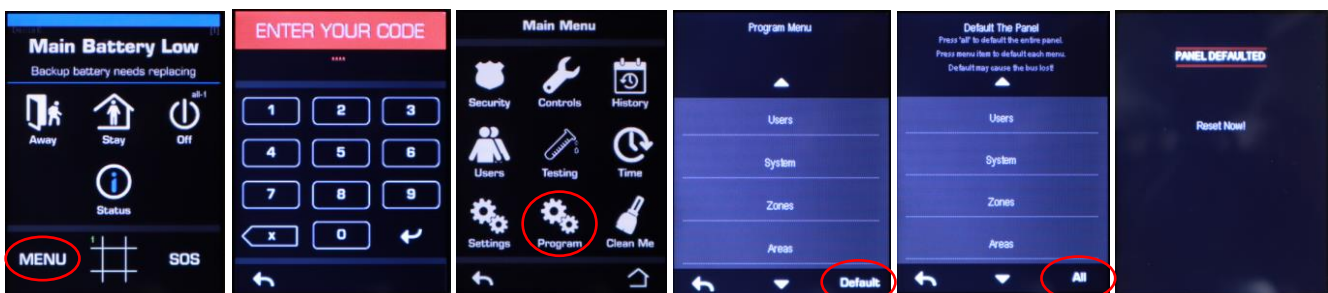
Step 1. Enrol XR Series Keypad

On initial start-up the XR Series Keypads will not be polled and will require manual enrolment.



- 1a. Press and hold the learn button for approximately 2 Seconds located on the circuit board.
- 1b. The XR panel will detect any connected device and enrol accordingly
- 1c. Once completed keypads home screen will appear displaying time & date loss and if any other system errors i.e. Battery fail.

Step 2. Defaulting Panel



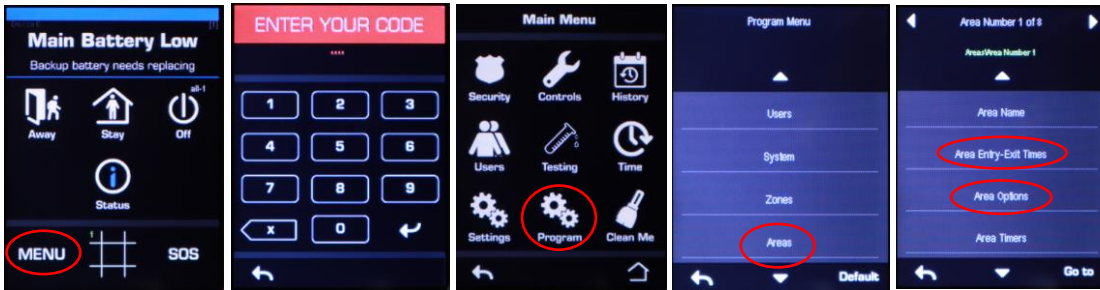
- 2a. Select **Menu** > **Installer code** > enter key
- 2b. Select **Program** > **Default**.
- 2c. On the Default Screen Select **All**
- 2d. Then panel will restart and will prompt enrolment of the keypad again. Follow the enrolment procedure (Step 1 above) to register XR keypads.

The panel is now ready for Programming.

XR Quick Programming Guide

Method 1 (keypad programming)

Step 3. Setting up areas + area options

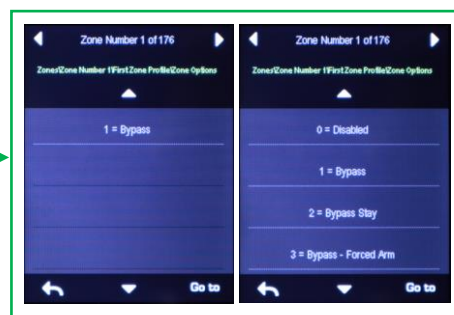
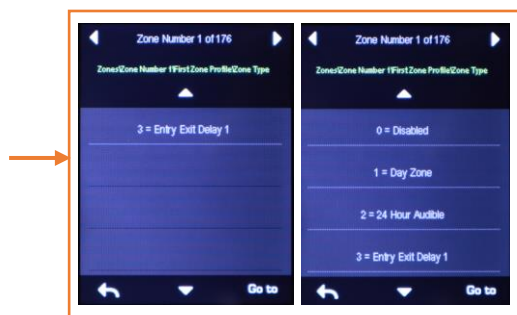
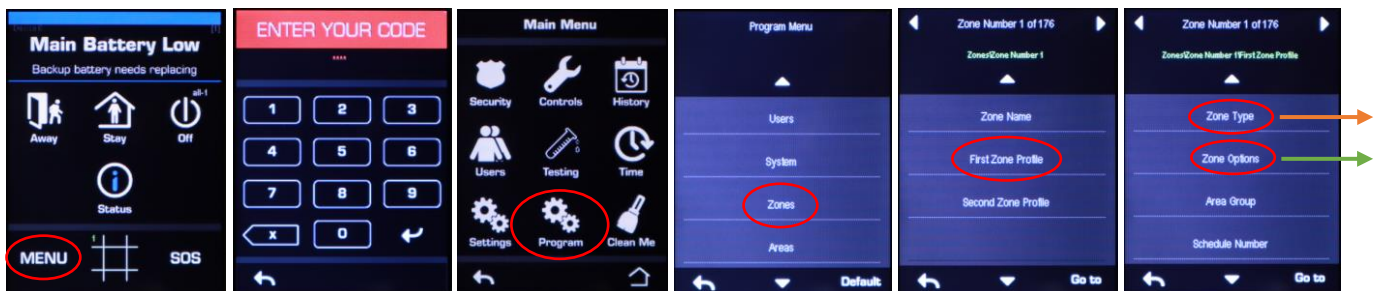


3a. Select **Menu** > **Installer code** > enter key

3b. Select **Program** > **Areas**. (use Arrow keys to navigate through menus)

3c. From the Areas menu options such as entry/exit timers, siren chirp on arming/disarming can be programmed

Step 4. Zone programming



4a. Select **Menu** > **Installer code** > enter key

4b. Select **Program** > **Zones**. (use Arrow keys to navigate through menus)

4c. From the Input menu programming of zone types and options can be programmed.



-First zone Profile affects how the Zone operates when the area(s) associated is armed.

-Second zone Profile affects how the Zone operates when the area(s) associated is Disarmed.

XR Quick Programming Guide

Please refer to Page 10, 11, 12 for Zone types and Zone options

Step 5. Setting up users/Installer



5a. Select **Menu** > **Installer code** > enter key

5b. Select **Users** > **Add. Modify**

5c. Select the user number, press **Enter** (this is a user number not PIN)

5d. From the user menu, name details and pin can be changed.

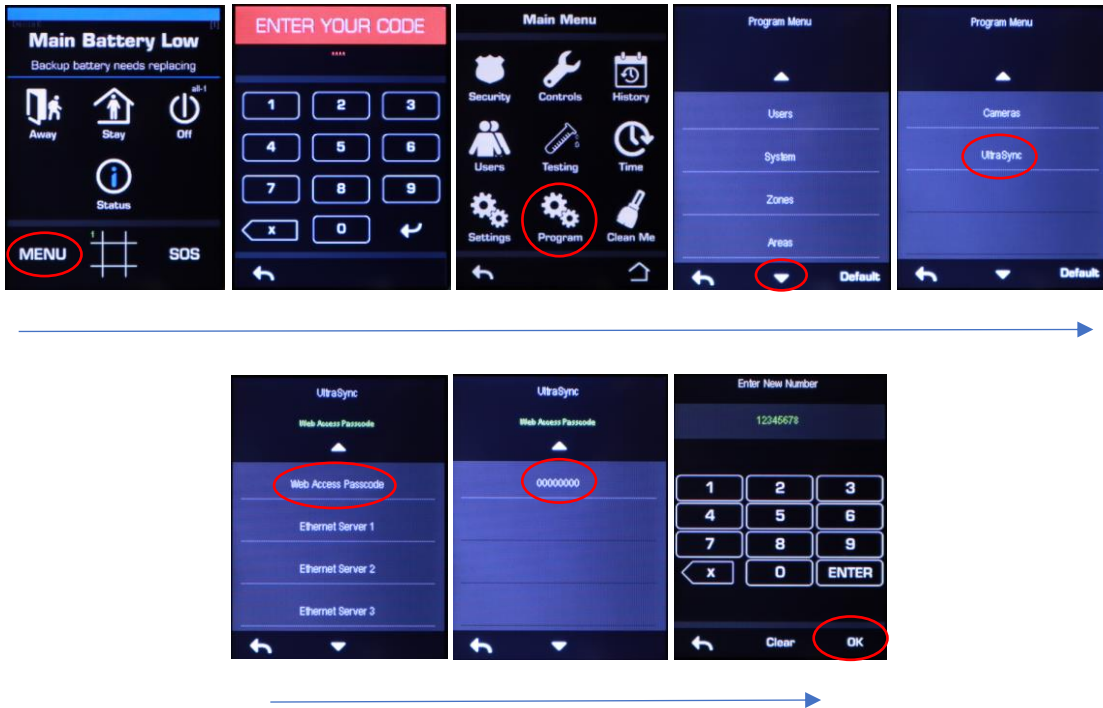
Additional settings such as area assignment and user permissions can also be changed.

5e. Press the Save icon when completed

By default, **User 1 (master user with Pin 1234)** and **User 256 (Installer with Pin 9713)** are created.

XR Quick Programming Guide

Step 6. Setting up Panel for Ultrasync+ App



Instructions below assumes the Reliance XR series panel connected to a network with a DHCP server and has a connection to the internet

- 6a. Select **Menu** > **Installer code** > enter key
- 6b. Select **Program** > **Ultrasync**. (use Arrow keys to navigate through menus)
- 6c. Select **Web Access Passcode** and change the passcode to an 8 digit code then Press **OK**
Note: 00000000 = Disabled

Please refer to Page 7 for setting a Static IP address

XR Quick Programming Guide

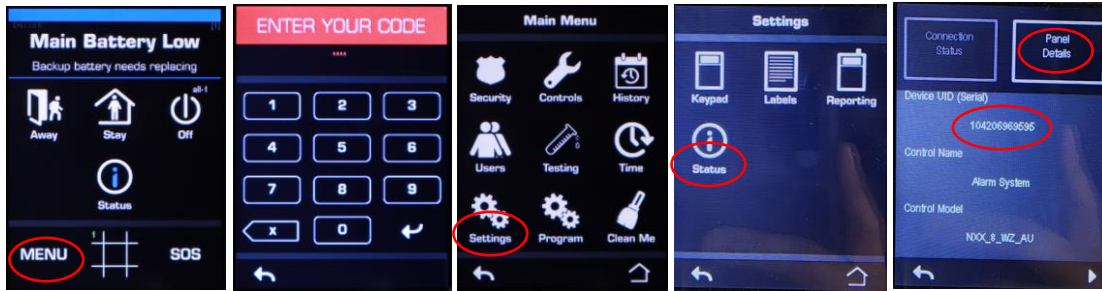
Step 7. Setting up Ultrasync+ App

Before connecting the Ultrasync+ App, the below details are required.

- Username
- Userpin
- Serial Number
- Ultrasync passcode

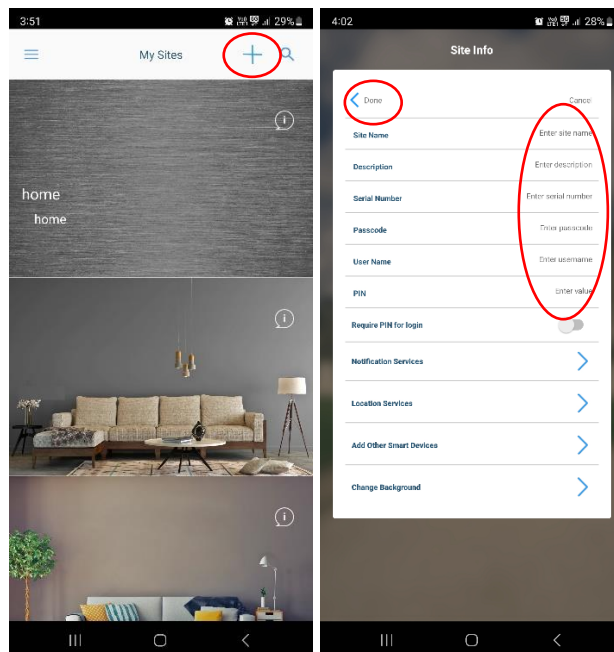
Serial number is printed and labelled on the Main PCB or from an XR series code pad in:

MENU > SETTINGS > STATUS > PANEL DETAILS



Ultrasync passcode setup can be found on page 4

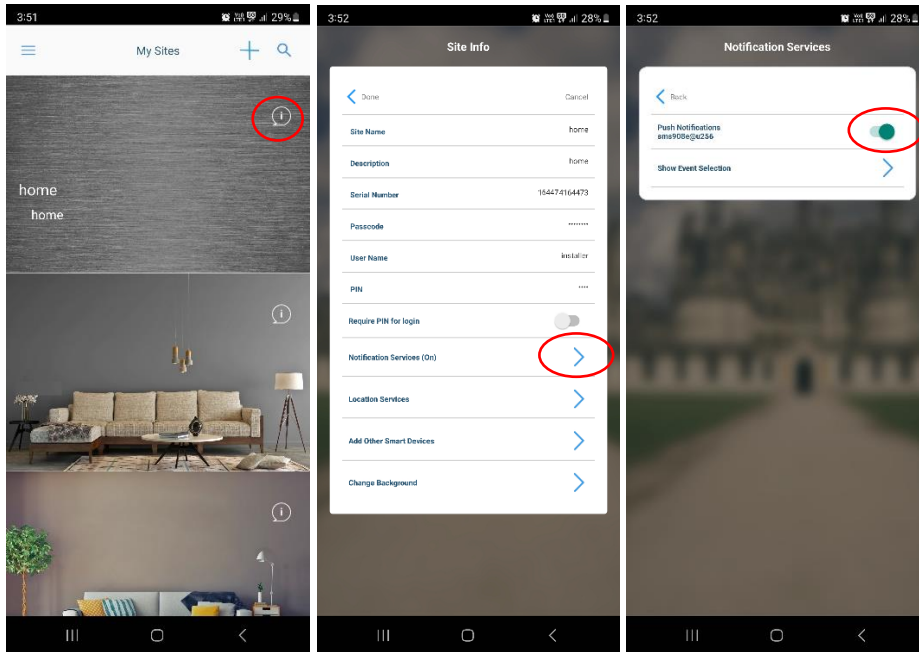
- 7a. Download the Ultrasync+ app from the IOS or Android App store and launch the application.
- 7b. From the Ultrasync+ home screen Select + to add a new site
- 7c. Enter the details associated to the panel which is to be connected.
- 7d. Select **Done** and select site to connect.




Please note Username is case sensitive.


XR Quick Programming Guide

Step 8. Setting up push notifications



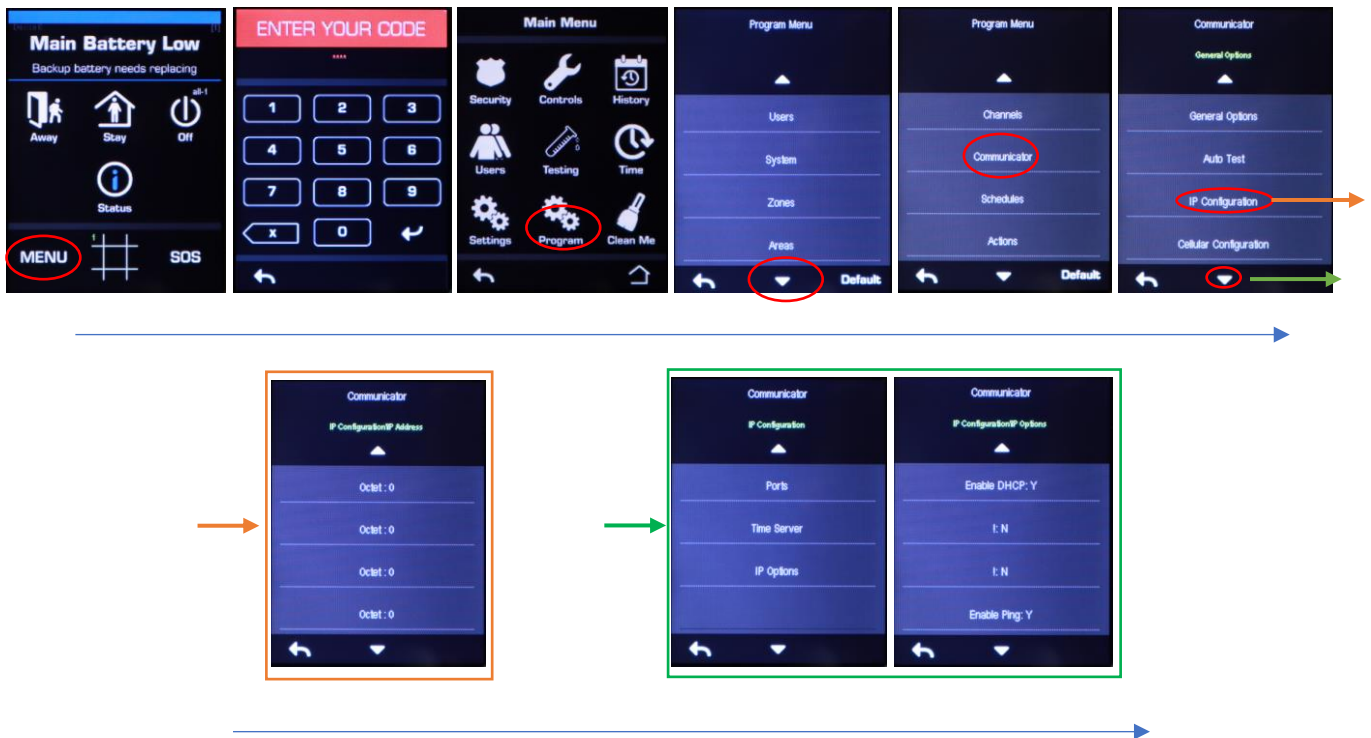
8a. From the Ultrasync+ home screen Select info icon 

8b. Select **Notification Services (on)**

8c. Enable Push Notifications by enabling the option 

XR Quick Programming Guide

Checking IP from keypad/setting up Static IP



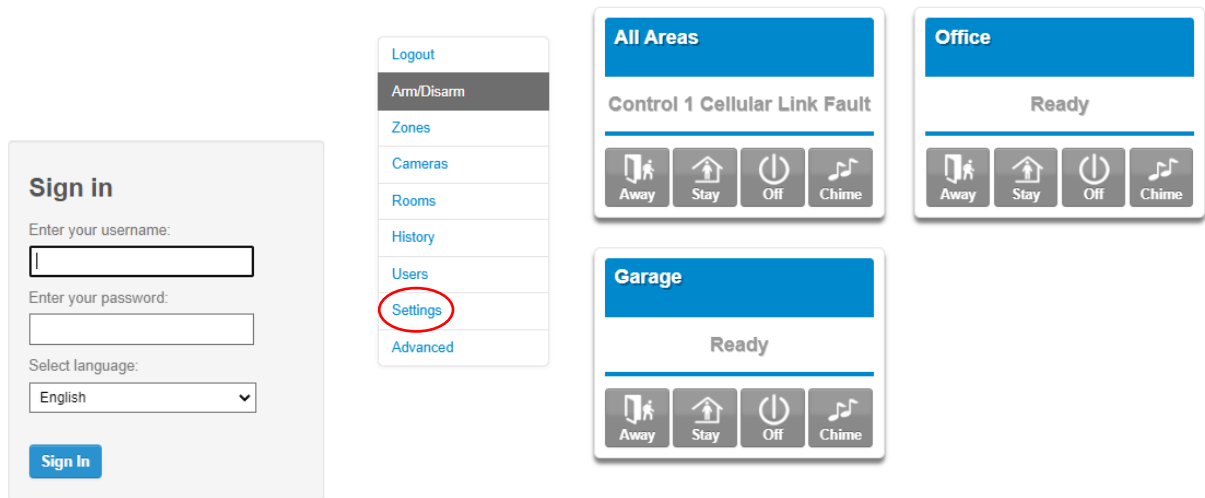
1. Select **Menu** > **Installer code** > enter key
2. Select **Program** > **Communicator**. (use Arrow keys to navigate through menus)
3. Select **IP Address**. IP address will be displayed if connected to a DHCP server. If each octet returns a value of **0.0.0.0** no DHCP server has been detected. Check cabling and connection to router, refer to a Network technician.

If a Static IP is required, please follow the below:

1. Select **Menu** > **Installer code** > enter key
2. select **Program** > **Communicator** > **IP Options**. (use Arrow keys to navigate through menus)
3. Select **Enable DHCP** to toggle the setting from **Y** (Yes) to **N** (No)
4. Return to the Communicator menu by pressing and select **IP Address**
5. Each octet (displayed in Decimal) can then be change to the desired IP Address
6. Complete this step for **DNS, Gateway and Subnet** which are found in the Communicator Menu

XR Quick Programming Guide

Method 2 (Web Browser Programming)



The programming of the XR series panel can also be completed via Web browser so long as the IP address of the panel is known. [Please refer to Page 7 for checking or setting a Static IP.](#)

1. With a computer or smart device connected to the same network as the XR series panel, open Web Browser and type in the IP address in the address bar then enter.
2. Enter the details of the installer user and sign in

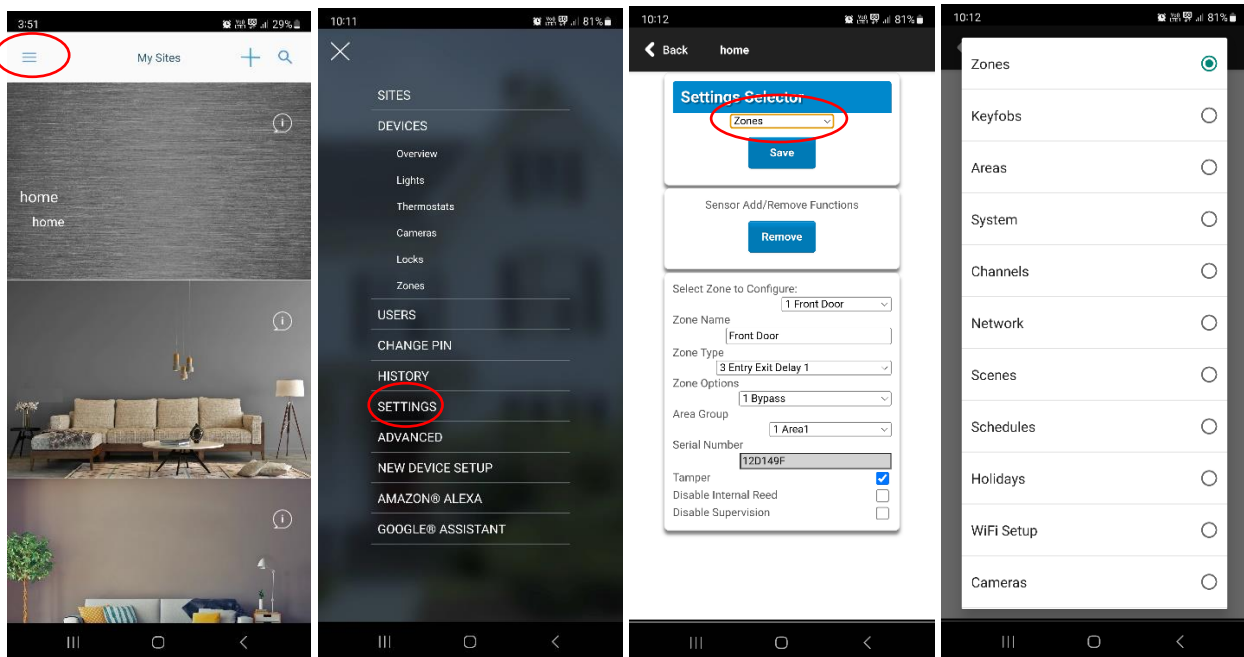
Default installer details are:

Login – **installer** (all lower case)
Password – **9713** (default code)

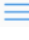
3. Programming can now be completed using the **Settings** Menu.

XR Quick Programming Guide

Method 3 (Ultrasync+ App Programming)



The programming of the XR panel can also be completed via Ultrasync+ App so long as the Panel has been setup for the App. [Please refer to Page 4 & 5 for app Setup](#)

1. Log into the panel from the Ultrasync+ app
2. Click on the hamburger icon  on the top left-hand corner of the screen
3. Select **Settings**
4. using the drop-down list, select the desired programming to be changed.

XR Quick Programming Guide

Additional Information



NX BUS – Legacy devices installed on the NX BUS have limited functionality and cannot be used to program and XR series Panels. NetworkX keypads are generally used for User operation for arming and disarming.



Universal Activator Remote Kit setup

1. Wire Activator remote kits into NX BUS
2. Program User 2 with any 4 Digit Code
3. Test Remote

Note: Only Area 1 can be controlled by Activator Remotes.

[Please refer to page 3 to for user programming](#)

XR Quick Programming Guide

Zone Types Table

Default Number	Default Name	Zone Attribute	Siren Attribute	Keypad Sounder	Report Delay	No Keypad Display	Momentary Switch	Zone Inhibit	Swinger Shutdown
Armed									
1	Day Zone	Instant	Yelping	Y	Y	N	N	N	Y
2	24 Hour Audible	Instant	Yelping	Y	Y	N	N	N	Y
3	Entry Exit Delay 1	Entry 1	Yelping	Y	Y	N	N	N	Y
4	Entry Exit Delay 2	Entry 2	Yelping	Y	Y	N	N	N	Y
5	Follower	Handover	Yelping	Y	Y	N	N	N	Y
6	Instant	Instant	Yelping	Y	Y	N	N	N	Y
7	24 Hour Silent	Instant	Silent	N	Y	N	N	N	Y
8	Fire Alarm	Fire	Fire	Y	N	N	N	N	N
9	Entry Exit Delay 1 Auto-Bypass	Entry 1	Yelping	Y	Y	N	N	Y	Y
10	Entry Exit Delay 2 Auto-Bypass	Entry 2	Yelping	Y	Y	N	N	Y	Y
11	Instant Auto-Bypass	Instant	Yelping	Y	Y	N	N	Y	Y
12	Event Only	Event Only	Silent	N	N	Y	N	N	N
13	Momentary Key Switch	Keyswitch	Silent	N	N	N	Y	N	N
14	Latching Key Switch	Keyswitch	Silent	N	N	N	N	N	N
15	CO Detector	Instant	Four Pulse	Y	N	N	N	N	N
16	Exit Terminate	Exit Terminate	Silent	N	N	N	N	N	N
17	Holdup	Holdup Delay	Silent	N	N	N	N	N	N
18	24 Hour Local Sounder	Instant	Silent	Y	N	N	N	N	N
Disarmed									
1	Day Zone	Local	Silent	Y	N	N	N	N	N
2	24 Hour Audible	Instant	Yelping	Y	Y	N	N	N	Y
3	Entry Exit Delay 1	Event Only	Silent	N	N	N	N	N	N
4	Entry Exit Delay 2	Event Only	Silent	N	N	N	N	N	N
5	Follower	Event Only	Silent	N	N	N	N	N	N
6	Instant	Event Only	Silent	N	N	N	N	N	N
7	24 Hour Silent	Instant	Silent	N	Y	N	N	N	Y
8	Fire Alarm	Fire	Fire	Y	N	N	N	N	N

XR Quick Programming Guide

Default Number	Default Name	Zone Attribute	Siren Attribute	Keypad Sounder	Report Delay	No Keypad Display	Momentary Switch	Zone Inhibit	Swinger Shutdown
9	Entry Exit Delay 1 Auto-Bypass	Event Only	Silent	N	N	N	N	N	N
10	Entry Exit Delay 2 Auto-Bypass	Event Only	Silent	N	N	N	N	N	N
11	Instant Auto-Bypass	Event Only	Silent	N	N	N	N	N	N
12	Event Only	Event Only	Silent	N	N	Y	N	N	N
13	Momentary Key Switch	Keyswitch	Silent	N	N	N	Y	N	N
14	Latching Key Switch	Keyswitch	Silent	N	N	N	N	N	N
15	CO Detector	Instant	Four Pulse	Y	N	N	N	N	N
16	Exit Terminate	Event Only	Silent	N	N	N	N	N	N
17	Holdup	Holdup Delay	Silent	N	N	N	N	N	N
18	24 Hour Local Sounder	Instant	Silent	Y	N	N	N	N	N

Zone Options Table

Default Number	Default Name	Zone Options										Zone Reporting					Zone Contact Options				
		Bypassed Stay Mode	Forced Arm Enabled	Bypass	Cross Zone	EOL	Automatic Zone Test	Night Mode	Zone Inactivity Test	Follow Any Armed Area	Final Set Door	Single EOL	Delayed in Stay	Alarms	Alarm Restores	Bypass-Unbypass	Zone Lost-Low Battery	Zone Trouble and Restore	Normally Open	Fast Loop	Zone Report Event
1	Bypass			Y		Y							Y	Y	Y	Y	Y				130:BA
2	Bypass Stay	Y	Y	Y		Y							Y	Y	Y	Y	Y				132:BA
3	Bypass – Forced Arm		Y	Y		Y							Y	Y	Y	Y	Y				130:BA
4	Bypass – Cross Zone			Y	Y	Y							Y	Y	Y	Y	Y				130:BA
5	Fire		Y			Y							Y	Y	Y	Y	Y				110:FA
6	Panic		Y			Y							Y	Y	Y	Y	Y				120:PA
7	Silent Panic					Y							Y	Y	Y	Y	Y				122:HA
8	Normally Open no EOL			Y									Y	Y	Y	Y	Y	Y			130:BA

XR Quick Programming Guide

		Zone Options										Zone Reporting					Zone Contact Options				
Default Number	Default Name	Bypassed Stay Mode	Forced Arm Enabled	Bypass	Cross Zone	EOL	Automatic Zone Test	Night Mode	Zone Inactivity Test	Follow Any Armed Area	Final Set Door	Single EOL	Delayed in Stay	Alarms	Alarm Restores	Bypass-Unbypass	Zone Lost-Low Battery	Zone Trouble and Restore	Normally Open	Fast Loop	Zone Report Event
9	Normally Closed no EOL		Y											Y	Y	Y	Y	Y			130:BA
10	Gas Detected					Y								Y	Y	Y	Y	Y			151:GA
11	High Temp					Y								Y	Y	Y	Y	Y			158:KA
12	Water Leakage					Y								Y	Y	Y	Y	Y			154:WA
13	Low Temp					Y								Y	Y	Y	Y	Y			159:ZA
14	High Temp					Y								Y	Y	Y	Y	Y			158:KH
15	Fire Alarm Pull Station					Y								Y	Y	Y	Y	Y			115:FA
16	Night Mode	Y	Y	Y	Y		Y							Y	Y	Y	Y	Y			135:BA
17	Final Set Door		Y	Y						Y				Y	Y	Y	Y	Y			130:BA
18	Medical	Y		Y										Y	Y	Y	Y	Y			100:MA
19	Blank	Y	Y	Y										Y	Y	Y	Y	Y			130:BA
20	Blank	Y	Y	Y										Y	Y	Y	Y	Y			130:BA
21	Blank	Y	Y	Y										Y	Y	Y	Y	Y			130:BA
22	Blank	Y	Y	Y										Y	Y	Y	Y	Y			130:BA
23	Blank	Y	Y	Y										Y	Y	Y	Y	Y			130:BA
24	Blank	Y	Y	Y										Y	Y	Y	Y	Y			130:BA
25	Blank	Y	Y	Y										Y	Y	Y	Y	Y			130:BA
26	Blank	Y	Y	Y										Y	Y	Y	Y	Y			130:BA
27	Blank	Y	Y	Y										Y	Y	Y	Y	Y			130:BA
28	Blank	Y	Y	Y										Y	Y	Y	Y	Y			130:BA
29	Blank	Y	Y	Y										Y	Y	Y	Y	Y			130:BA
30	Blank	Y	Y	Y										Y	Y	Y	Y	Y			130:BA
31	Blank	Y	Y	Y										Y	Y	Y	Y	Y			130:BA
32	Blank	Y	Y	Y										Y	Y	Y	Y	Y			130:BA