

• ***New manager master badge***

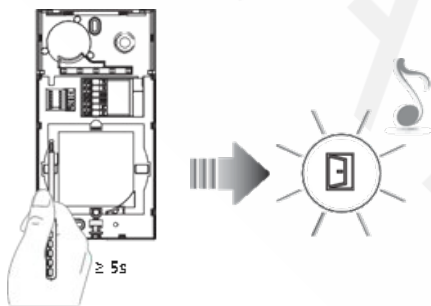
For safety reasons, a “MASTER” badge is required, directly programmed by the installer. To access the programming of a “RESIDENT” badge you must be in possession of a system operator badge.

The entrance panel will notify that the badge has been accepted or deleted by means of sound notifications, as well as visual indications using the LEDs on the entrance panel.

The presentation of an unrecognised badge or a programming error will lead to interruption of the procedure. A signal will be given by means of a long beep and the connection and door lock LED will light up.

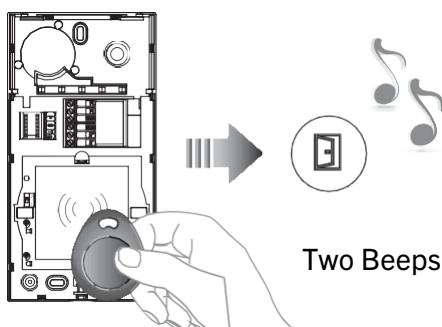
Note: the system management key card does not control the door lock but only enables the resident key card programming.

• ***System management badge programming***



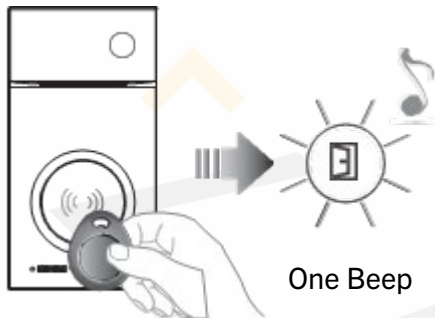
Press and hold down the programming pushbutton until the Doorlock LED starts flashing, and a confirmation sound is heard.

Move the **system manager badge** reader to save close and wait for the Door lock LED to switch on; a double confirmation sound will be heard.



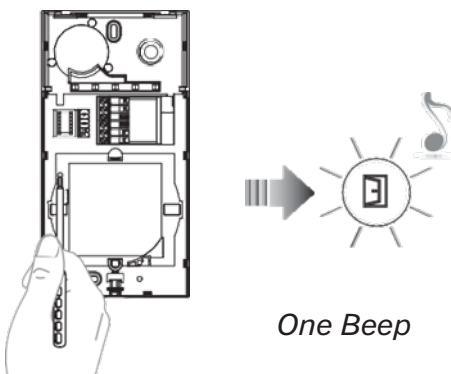
• If the saving is not successful, the Door lock and Connection LED light up at the same time and the device gives a long beep.

System management key card programming



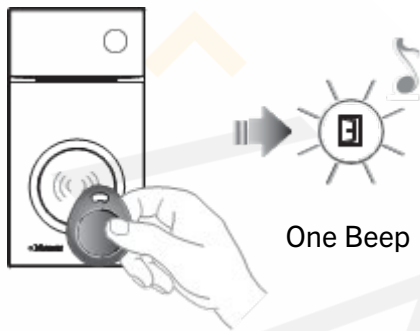
- Move the system **manager badge** close to the reader until the Door lock LED flashes, and a confirmation sound is heard.
- Move the **resident badge** to save close to the reader until the Door lock LED flashes, and a confirmation sound is heard.
If programming other resident badges, move each one close to the reader within 30 seconds from the previous one. To confirm that the programming procedure has been completed move the system manager badge close, or wait 30 seconds. Two short beeps confirm that programming has been successful.

• *Deleting the manager master badge*



- Press and hold down the programming pushbutton until the Door lock LED starts flashing, and a confirmation sound is heard.

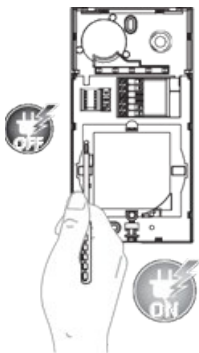
- Press the programming pushbutton again for 10 seconds. When the cancellation is completed, the Door lock LED comes, on and the device emits 2 beeps.
- Cancellation of all the residents badges saved in the memory



- Move the system manager badge close to the reader until the Door lock LED flashes, and a confirmation sound is heard.
- Move the system manager badge close twice in succession. When the cancellation is completed, the Door lock LED comes, on and the device emits 2 beeps.

Reset

In order to cancel all the previously saved badges (system manager and residents) the entrance panel can be reset.



- Remove the BUS; press and hold down the programming pushbutton, reconnect the power supply. Press and hold down the programming pushbutton until the Door lock and the Connection LEDs start flashing in succession; a long beep is also heard.