

Instruction Manual

C A D O L A
- 1 9 4 6 -



To ensure correct care, please take some time to review the enclosed instructions to review how to operate your watch.

Vol.1.52 EN

 CADOLA1946

Cadola

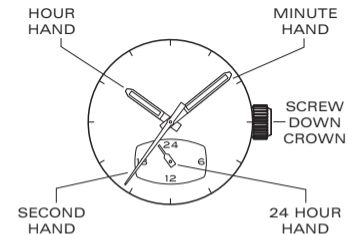
GIULIA
MECA QUARTZ

MECA-QUARTZ
WATCH

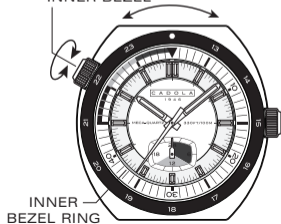
This watch is powered by a Japanese made "Meca-Quartz" movement. It combines a battery regulated engine with a mechanical module. The result is a watch that delivers the meticulous pinpoint precision of a quartz movement along with the smooth sweep seconds hand and visual charm of mechanical watches.

For more details on operating this timepiece please refer to the enclosed booklet or visit :

IM.CADOLA1946.COM



CROWN FOR TURNING
INNER BEZEL

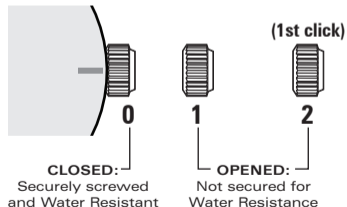


PLEASE READ THE FOLLOWING BEFORE UNSCREWING THE CROWN:

SCREW-DOWN CROWN

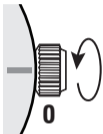
Screw-down crowns are used to ensure water resistance. **ALWAYS** be certain that your crown is securely screwed down (Position [0] is secured. Positions [1] and [2] are not secured for water resistance).

Do **NOT** unscrew your crown while you are in any environment where moisture is present.



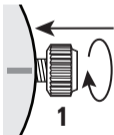
USING THE SCREW-DOWN CROWN

DO **NOT** PULL THE CROWN UNLESS IT IS **UNSCREWED** FIRST:



TO UNSCREW:

Turn the crown anti-clockwise until it turns freely without tension. GENTLY pull the crown out to the other desired positions for watch setting (see specific operating instructions on the following pages).



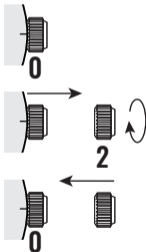
TO SCREW:

Push the crown ALL THE WAY IN (towards the watch) THEN begin to turn clockwise until it is securely screwed down.

NOTE: Failure to SECURELY screw down the crown after setting the watch may affect its water resistance.

HOW TO SET THE TIME

1. Put the crown to position [2]-(1st click).
2. Turn the crown clockwise to set the correct time.
3. Push the crown back to position [0].



- * Take a.m./p.m. into consideration when setting the hour and minute hands to the desired time.
- * The 24 hour hand moves correspondingly with the hour hand.
- * When setting the hour hand, check that the 24 hour hand is correctly set.

WATER RESISTANCE

The water resistance indicated on your timepiece serves only as a guide. Actual water resistance may vary depending on a number of important factors including temperature, water salinity, and actual use under water.

The water resistance of your timepiece may eventually be compromised over time with general wear and tear and the use of your watch under adverse conditions.

Always remember to employ the screw down crown (if available) to maintain the water resistance of your timepiece. Warranty may be voided if the screw down crown has not been properly employed.

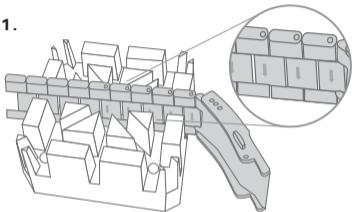
Note that you should NEVER wear your watch in a jacuzzi, hot shower or steam room where steam may enter the case despite the watertight seals used to protect your watch.

The steam may cause condensation inside your watch, which may affect and damage the inner workings of your watch – which would also not be covered by the warranty.

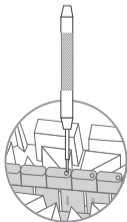
HOW TO RESIZE METAL BRACELET

On the inside of the bracelet, you will see some small arrows engraved on removeable links.

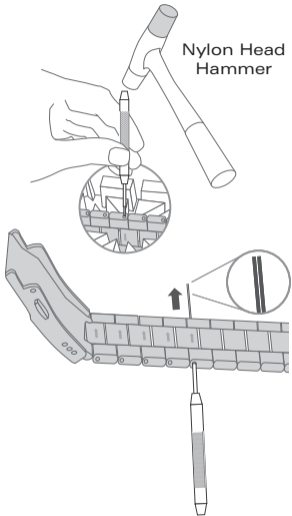
1.



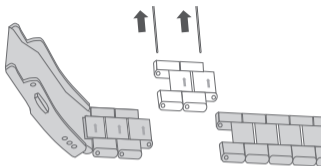
2.



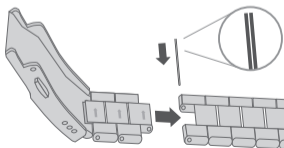
3.



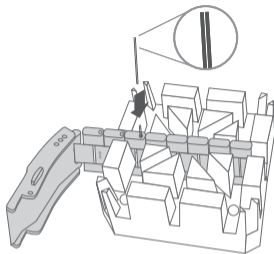
5.



6.

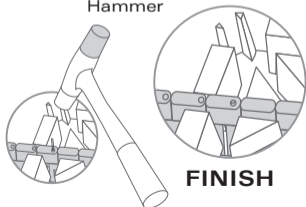


7.



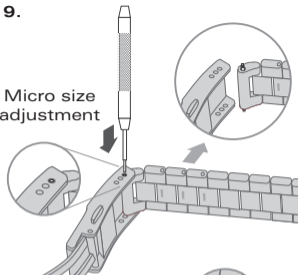
8.

Nylon Head
Hammer

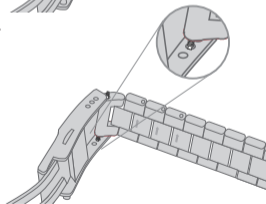


9.

Micro size
adjustment

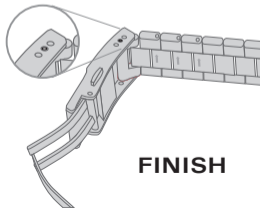
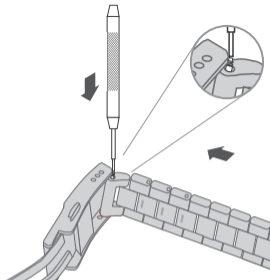


10.



11.

12.



FINISH