

# Instruction Manual

C A D O L A  
- 1 9 4 6 -



To ensure correct care, please take some time to review the enclosed instructions to review how to operate your watch.

Vol.1.36 EN

 CADOLA1946

*Cadola*

AHRENS  
CHRONOGRAPH

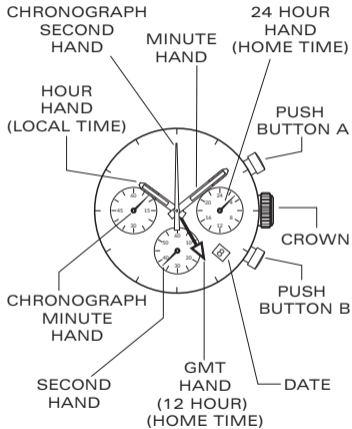
CHRONOGRAPH  
WATCH

This watch is equipped with a quartz powered chronograph movement.

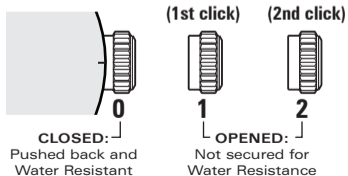
Besides the normal time read out, this movement enables split timing micro measurements of time at the push of a button, which can be utilized in a variety of applications.

For more details on operating this timepiece please refer to the enclosed booklet or visit :

**IM.CADOLA1946.COM**

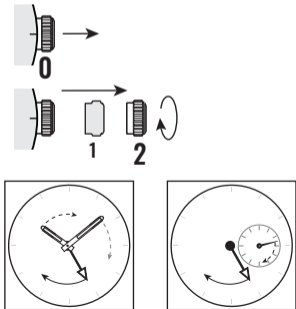


UNI-DIRECTIONAL  
TURNING BEZEL



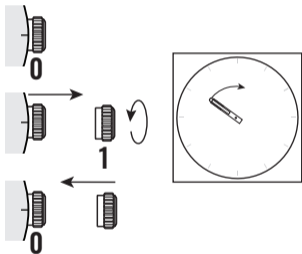
## SET THE HOME TIME

1. Put the crown to position [2]-(2nd click).
2. Turn the crown to set the current time, paying attention to the motion of 12 hour hand and 24 hour hand and minute hand.
3. 24 hour hand correspondingly with GMT hand.



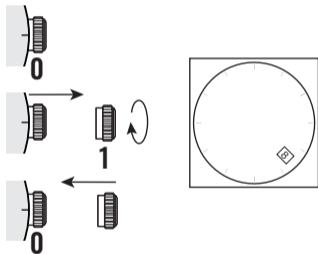
## SET THE LOCAL TIME

1. Put the crown to position [1]-(1st click).
2. Turn the crown anti-clockwise to set the correct time.
3. Push the crown back to position [0].



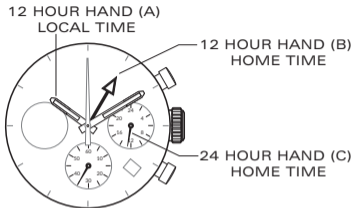
## SET THE DATE

1. Put the crown to position [1]-(1st click).
2. Turn the crown clockwise to set the correct date.
3. Push the crown back to position [0].



\* Do not set the date between 9:00 P.M. and 1:00 A.M.

## READING THE WATCH



When the watch hands appear in the diagram;

- home time in GMT is 13:10:35 (12 hour hand (B) and 24 hour hand (C) display)
- local time in Tokyo is 10:10:35 (12 hour hand (A) display).

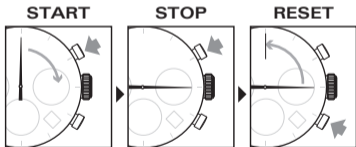
Note:

- The minute and second hands are the same under home and local time.
- The 24 hour hand (C) is synchronized with 12 hour hand (B)
- The date is synchronized with 12 hour hand (A) (local time)

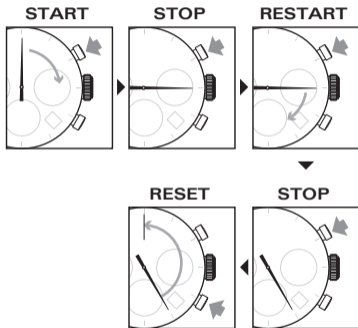
## STOPWATCH FUNCTION

- The stopwatch can measure up to 60 minutes.

## STANDARD MEASUREMENT



## ACCUMULATED ELAPSED TIME MEASUREMENT



Restart and stop of the stopwatch can be repeated by pressing the button **A**.

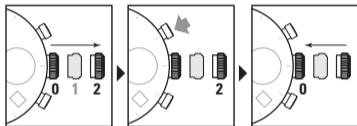
## ADJUSTING THE STOPWATCH HAND POSITION

This procedure should be performed when the chronograph second hand does not return to the Zero position after the chronograph has been reset, and including after the battery has been replaced.

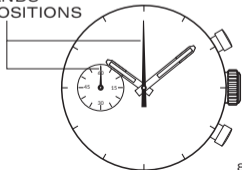
1. Pull the crown out to the [2]-(2nd click).
2. Press the button "A" once to set the chronograph second hand to the Zero position.

- \* The chronograph hands can be advanced rapidly by continuously pressing button "A".
3. Once the chronograph hands been set at Zero position, readjust the normal hour and minute hands to the correct time and return the crown to its normal position.

- \* Do not return crown to normal position while chronograph second hand returns to 12:00 (ZERO) position. Hand stops on the way when crown is returned to normal position and these positions are recognized as 12:00 (ZERO) position.



### STOPWATCH HANDS ZERO POSITIONS



## WATER RESISTANCE

The water resistance indicated on your timepiece serves only as a guide. Actual water resistance may vary depending on a number of important factors including temperature, water salinity, and actual use under water.

The water resistance of your timepiece may eventually be compromised over time with general wear and tear and the use of your watch under adverse conditions.

Always remember to employ the screw down crown (if available) to maintain the water resistance of your timepiece. Warranty may be voided if the screw down crown has not been properly employed.

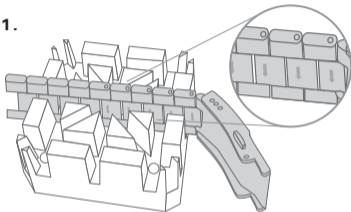
Note that you should NEVER wear your watch in a jacuzzi, hot shower or steam room where steam may enter the case despite the watertight seals used to protect your watch.

The steam may cause condensation inside your watch, which may affect and damage the inner workings of your watch – which would also not be covered by the warranty.

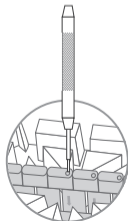
## HOW TO RESIZE METAL BRACELET

On the inside of the bracelet, you will see some small arrows engraved on removeable links.

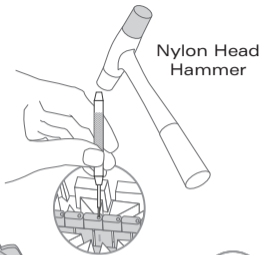
1.



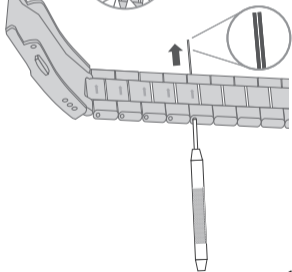
2.



3.

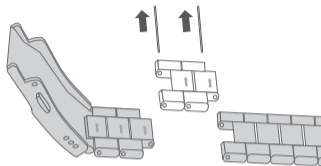


4.

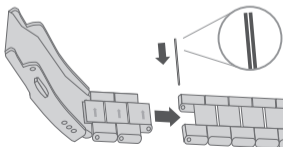


10

5.



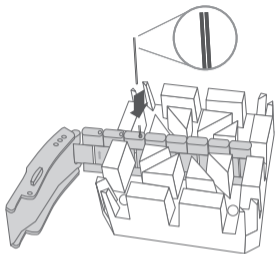
6.



11

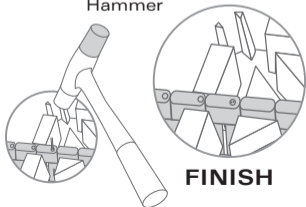


7.



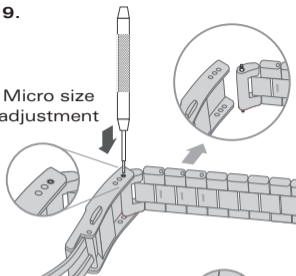
8.

Nylon Head Hammer

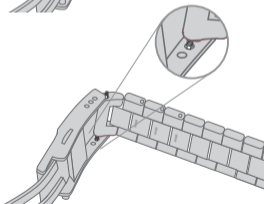


9.

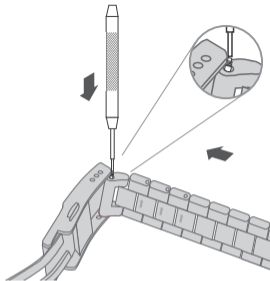
Micro size adjustment



10.



11.



12.

