

# Instruction Manual

## CADOLA - 1946 -

To ensure correct care, please take some time to review the enclosed instruction to review how to operate your watch.

Vol.1.03 EN  CADOLA1946

# Cadola

## SPEAR FISHER

### Limited Edition

## AUTOMATIC WATCH

This timepiece is equipped with a self-winding Swiss Mechanical Automatic movement.

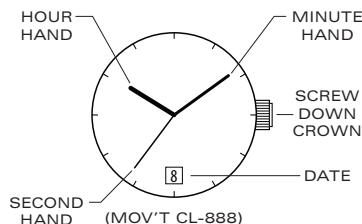
**It does not need a battery.**

It is powered by the motions of the user's own wrist during the wear of the watch.

You may also choose to wind the watch manually.

For more details on operating this timepiece please refer to the enclosed booklet or visit :

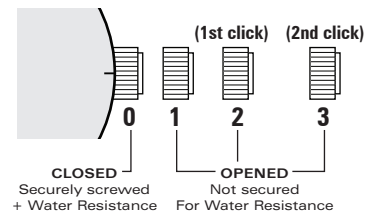
[CADOLA1946.COM](http://CADOLA1946.COM)



**PLEASE READ THE FOLLOWING BEFORE UNSCREWING THE CROWN:**

### SCREW-DOWN CROWN

Screw-down crowns are used to ensure water resistance. **ALWAYS** be certain that your crown is securely screwed down (Position [0] is secured. Positions [1], [2] and [3] are not secured for water resistance). Do **NOT** unscrew your crown while you are in any environment where moisture is present.

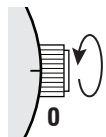


### USING THE SCREW-DOWN CROWN

**DO NOT PULL THE CROWN UNLESS IT IS UNSCREWED FIRST:**

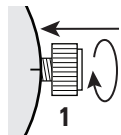
#### TO UNSCREW:

Turn the crown anti-clockwise until it turns freely without tension. GENTLY pull the crown out to the other desired positions for watch setting (see specific operating instructions on the following pages).



#### TO SCREW:

Push the crown ALL THE WAY IN (towards the watch) THEN begin to turn clockwise until it is securely screwed down.



**NOTE:** Failure to SECURELY screw down the crown after setting the watch may affect its water resistance.

**BEFORE YOU USE THIS WATCH, IT IS RECOMMENDED THAT YOU MANUALLY WIND THE MAIN-SPRING TO START IT MOVING.**

THIS WATCH IS AN AUTOMATIC WATCH EQUIPPED WITH A MANUAL WINDING MECHANISM.

### WINDING THE MAINSPRING



1. Unscrew the crown by turning it anti-clockwise.



2. When it is in position [1], turn the crown clockwise to wind. Wind 5-10 times and it will start to move naturally after shaking slightly.

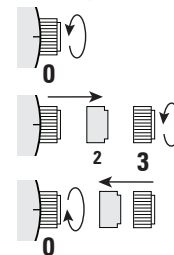


3. Push the crown in then screw it securely.

\* This watch **MUST** be worn for at least 8 (Eight) hours each day to ensure it is fully wound. An automatic watch will only wind when the watch is on your wrist and your arm moves. Winding the watch by the crown will put power on the spring but not enough to allow the watch to function fully. If your watch stops overnight or loses time it means it is not being fully wound.

### HOW TO SET THE TIME

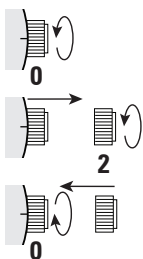
- Unscrew the crown and pull it out to position [3]-(2nd click).
- Turn the crown anti-clockwise to set the correct time.
- Push the crown in then screw it securely.



- \* Take a.m./p.m. into consideration when setting the hour and minute hands to the desired time.
- \* Always be certain that your crown is SECURELY SCREWED; this will prevent moisture from entering in.

### HOW TO SET THE DATE

- Unscrew the crown and pull it out to position [2].
- Turn the crown anti-clockwise to set the correct date.
- Push the crown in then screw it securely.



\* Do not set the date between 9:00 P.M. and 4:00 A.M.

WATER RESISTANCE CHART	30M/ 3ATM	50M/ 5ATM	100M/ 10ATM	150M/ 15ATM	200M/ 20ATM
SPLASH/ SHOWERING	✓	✓	✓	✓	✓
SWIMMING/ BATHING	✗	✓	✓	✓	✓
BRIEF SWIMMING/ WATER SPORTS	✗	✗	✓	✓	✓
PROLONGED SWIMMING/ FREE DIVING	✗	✗	✗	✓	✓
SCUBA DIVING	✗	✗	✗	✗	✗
PROFESSIONAL DEEP SEA DIVING	✗	✗	✗	✗	✗

### WATER RESISTANCE

Note that the water resistance chart serves only as a guide (please refer to the water resistance chart on the next page). Actual water resistance may vary depending on a number of factors including water temperature, water salinity, and use under water.

The water resistance of your timepiece may eventually be compromised over time with general wear and tear and use of your timepiece under adverse conditions.

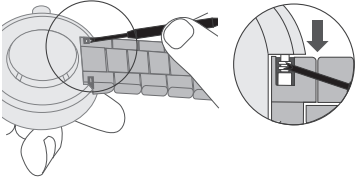
Always remember to employ the screw down crown if available to maintain the water resistance of your timepiece. Warranty may be voided if the screw down crown has not been properly employed.

Note that you should **never** wear your watch in a jacuzzi or steam room where steam may enter the case despite the water tight seals used to protect your watch. This may cause condensation inside your watch which may effect and damage the inner workings of your watch.

## HOW TO CHANGE THE STRAP

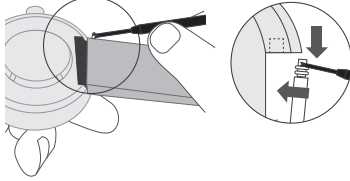
Strap Changing end → 

A.



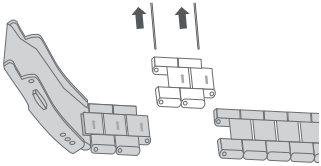
1. Use the strap changing tool, place the strap changing end to the metal pin as picture.
2. Push down the pin in the direction as picture at both sides and remove the bracelet.

B.

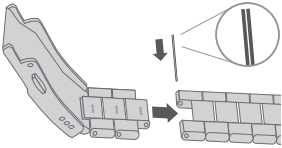


3. Push the pin end on strap to the lug hole.
4. Use the tool again to push down the pin as shown. Move the pin to the lug hole.

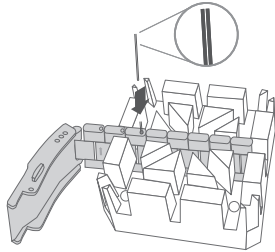
5.



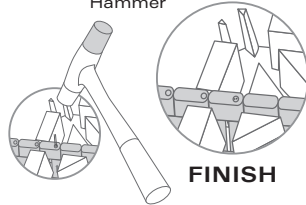
6.



7.



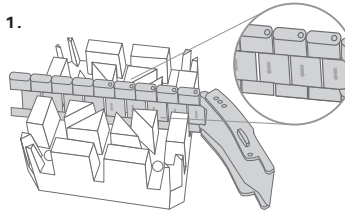
8. Nylon Head Hammer



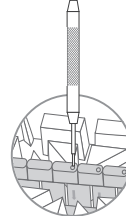
## HOW TO RESIZE METAL BRACELET

On the inside of the bracelet, you will see some small arrows engraved on removable links.

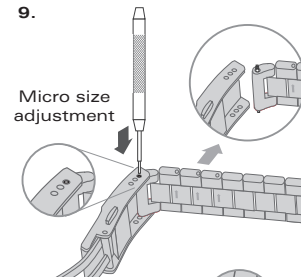
1.



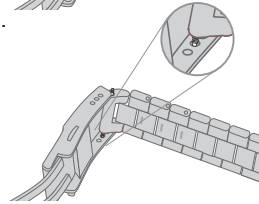
2.



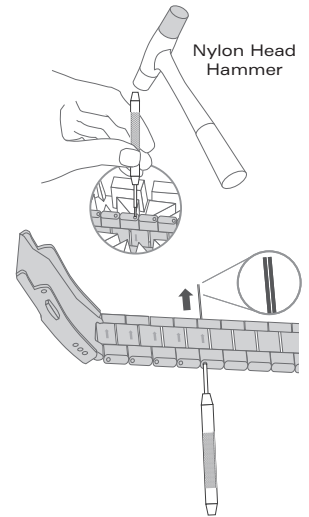
9.



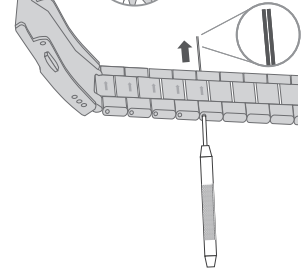
10.



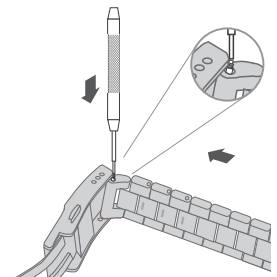
3.



4.



11.



12.

