

Instruction Manual

C A D O L A
- 1946 -

To ensure correct care, please take some time to review the enclosed instructions to review how to operate your watch.

Vol.1.13 EN

 CADOLA1946

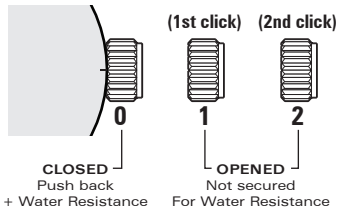
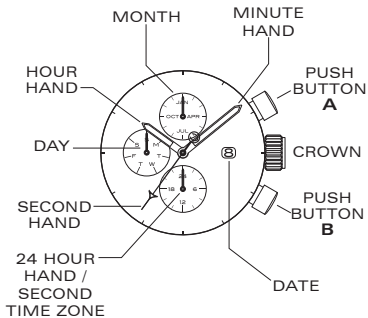
Cadola

HAIRPIN MULTIFUNCTION WATCH

This watch is equipped with a unique multi-function calendar feature with a second time zone read out and a quick adjust day date and month display feature.

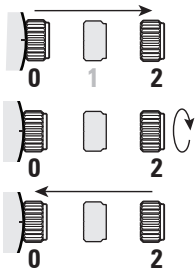
For more details on operating this timepiece please refer to the enclosed booklet or visit :

IM.CADOLA1946.COM



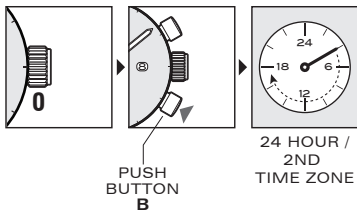
HOW TO SET THE TIME

1. Pull the crown out to position [2]-(2nd click).
2. Turn the crown clockwise to set the hour, minute and 24-hour hands to the desired time.
3. Push the crown back to position [0].



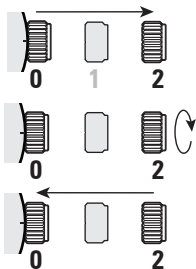
HOW TO SET THE SECOND TIME ZONE

1. Set the crown at position [0].
2. Press push button **B** step-by-step to advance the hand of the second time zone by one hour per step until the desired time is set.
3. Stop pressing the button after finished the setting.



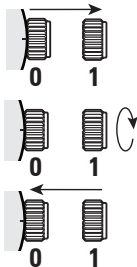
HOW TO SET THE DATE

1. Pull the crown to position [2]-(2nd click).
2. Turn the crown clockwise. The date will advance 1 day when the time reaches 00:00 midnight. Continue to turn the crown until the desired date is set.
3. Push the crown back to position [0].



QUICK CORRECTION OF DATE

1. Pull the crown out to position [1]-(1st click).
2. Turn the crown clockwise step-by-step to the desired date.
3. Push the crown back to position [0].



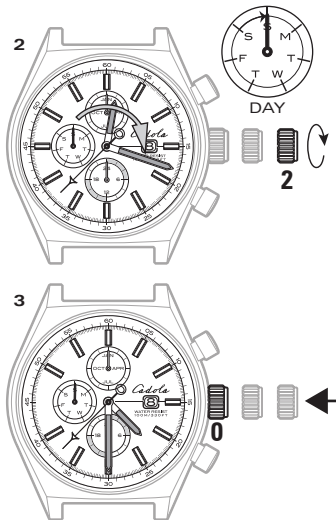
* Do not set the date between 21:00 P.M. and 00:30 A.M.

HOW TO SET THE DAY

1. Pull the crown out to position [2]-(2nd click).
2. Turn the crown clockwise to advance the day hand until the desired day is set. The day hand will advance one day when 04:00 A.M. in the morning is reached.
3. Push the crown back to position [0].



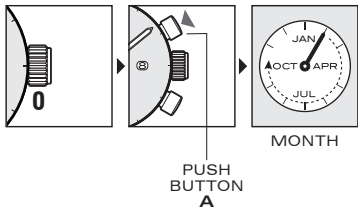
5



6

HOW TO SET THE MONTH

1. Set the crown at position [0].
2. Press push button **A** step-by-step to adjust the month to the desired one.
3. Stop pressing the button after finished the setting.



* Do not use Quick Correction on 31th of each month.

WATER RESISTANCE

The water resistance indicated on your timepiece serves only as a guide. Actual water resistance may vary depending on a number of important factors including temperature, water salinity, and actual use under water.

The water resistance of your timepiece may eventually be compromised over time with general wear and tear and the use of your watch under adverse conditions.

Always remember to employ the screw down crown (if available) to maintain the water resistance of your timepiece. Warranty may be voided if the screw down crown has not been properly employed.

Note that you should NEVER wear your watch in a jacuzzi, hot shower or steam room where steam may enter the case despite the watertight seals used to protect your watch.

The steam may cause condensation inside your watch, which may affect and damage the inner workings of your watch – which would also not be covered by the warranty.