

STANDARD GLASS INSTALLATION GUIDELINES

Please read carefully before beginning installation.

Installing glass tile involves some basic procedures that differ from installing ceramic or stone tile. Following these procedures will ensure a successful installation. This guide covers installation of glass tile in interior floors, walls, and showers. For exterior and submerged water applications, please refer to *Installation Guide – Pools, Spas, Water Features and Exterior Installations* available on our website.

The owner or owner’s representative is responsible for determining the acceptability of the product. Prior to installation OPEN AND INSPECT ALL BOXES to verify tile series, size/pattern, color and finish. Notify your tile dealer immediately of any damage, defect or other issue. Variation in surface, color, shade, shape and size are inherent in artistic hand-crafted tile. Lunada Bay Tile recommends a random sampling be taken from multiple boxes, inspected and blended prior to and throughout the installation process. Installation constitutes acceptance.

PREPARATION

Glass tile must be installed over a properly prepared substrate—a clean, sound, flat surface that is free of cracks, contaminates, sealers, paint or adhesives. This is one of the most important factors in ensuring a good installation, as glass tile has translucent and reflective properties that may reveal the presence of inconsistencies in the substrate.

Approved Surfaces for Setting

Concrete slabs (on grade) cured a minimum of 28 days, free of cracks, curing agents and any signs of laitance.

Well cured mortar beds (ANSI A108.1B Standards-cured a minimum 7 days).

Cement Board/backer units (CBU) to ANSI A118.9 Standards (Note: An ANSI A108A-2.1.8 membrane is required behind all CBU installations in wet areas).

Gypsum board (dry areas only) installed to ASTM C1396 or ASTM C1396M-04 Standards.

Do not install glass tile directly over particle board, plywood, or painted surfaces.

Glass Tile requires a highly modified glass tile approved mortar to properly bond to the substrate. Substrates that require “non-modified” or “lightly modified” setting mortars to adhere tile are NOT acceptable for use with our glass tile products. Please verify compatibility prior to installation with manufacturer of substrate.

Cutting Guidelines

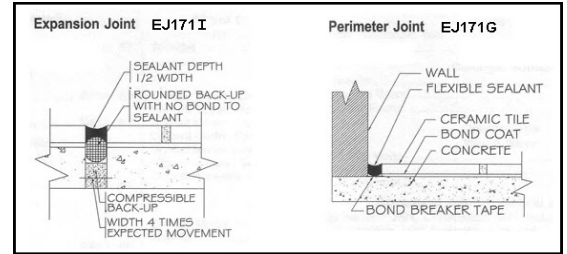
- We recommend **WET** cutting and/or score and snap method **ONLY**
- Do **NOT** dry cut using power tools
- Improper cutting techniques could expose installer to harmful silica dust

Cutting Glass Tile	Drilling Holes
<ul style="list-style-type: none"> • Use ONLY a WET saw with a diamond blade for glass: <i>Montolit CPV Series; Alpha Vetro Series; MK Series</i> • Do NOT dry cut using power tools • To prevent rough edges, glass tiles must be cut slowly 	<ul style="list-style-type: none"> • WET drill tile <i>before</i> installation. Drilling from both sides will minimize chipping and cracking • Use a diamond core bit at low speed (250 to 300rpm) • Constantly wet the tile and drill bit with water during drilling to prevent tile from cracking • Openings should be 1/8” larger than fixture fittings to avoid stress transfer to the tile

Movement/Expansion Joints: Refer to TCNA -EJ171

A soft joint is required between any change in direction or 90-degree angle and any dissimilar material within the tile installation (tile to tile, tile to metal, tile to wood).

Additional movement provisions may be required based on the conditions of the project.



INSTALLATION

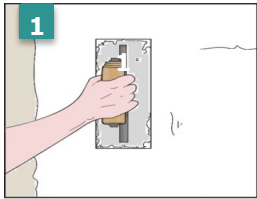
Installation Tips

A 3/16" x 1/4" V-Notch trowel is recommended for installation. Check periodically during installation to verify proper coverage.

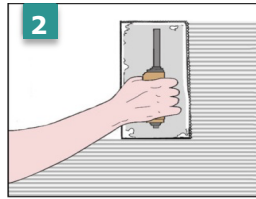
Our glass tiles are paper-face mounted with water-soluble glue. All sheets are printed with the words "Top Face" or "Mount This Side Out," **indicating that the paper must be facing out.** DO NOT install the tile with paper embedded into the thin-set.

Directional sheets must be installed with in the same orientation for proper alignment of directional blends.

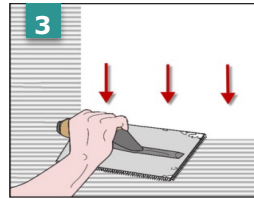
Step-By-Step Mosaic Installation



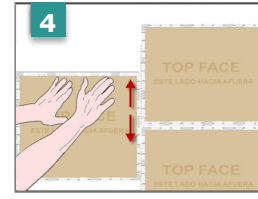
KEY in setting mortar to substrate using flat edge of trowel. Work in areas of 6-10 SF.



NOTCH: Use correctly sized V-Notch trowel to achieve uniform thickness.



FLATTEN: **Important** - Lightly knock down the tops of the notched thin-set with flat edge of trowel until flat and smooth.



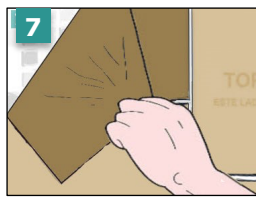
Sheets must be installed **PAPER FACING OUT**. Gently seat tile into the thin-set, paying attention to sheet lines and directional arrows, if included. **Consider offsetting sheets.**



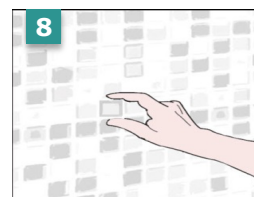
Use a rubber float lightly tap over tile surface to achieve full bond.



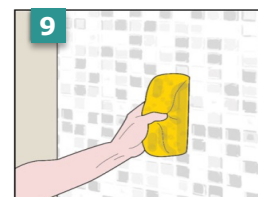
Wait approximately 15-30 minutes before lightly wetting the paper with water and a sponge. It may take several passes to properly saturate. **Do not use excessive water.**



Begin peeling paper off 5-10 minutes after wetting. Begin in one corner and pull close to surface at an angle towards the opposite corner, until paper is free from tile.



Adjust tiles as needed.



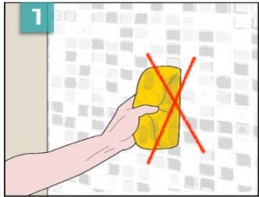
Promptly clean excess setting materials from tile surface with a damp sponge.



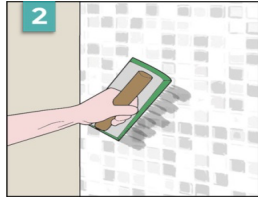
Follow setting manufacturer's recommended stated cure times prior to grouting.

Step-By-Step Grouting

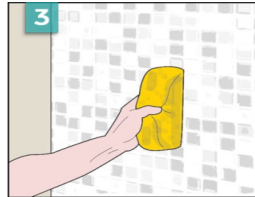
Our artistic glass may contain noticeable surface variations as a result of the manufacturing process. During the grouting process these may become more noticeable if grout residue is left to cure on the surface. A soft bristle brush may be used to remove the excess grout from the surface during the initial cleaning phase. It is critical to remove all excess grout from the surface of the tile before the grout is allowed to fully cure.



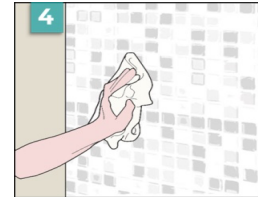
Residue left from paper face glue does not need to be removed before grouting. It actually serves as a perfect grout release.



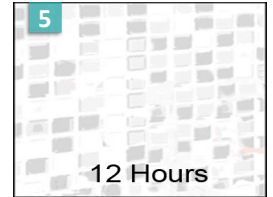
Apply grout with a rubber float making sure joints are free of voids.



Use a damp sponge to remove excess grout, leaving only a slight haze residue. Use a soft bristled brush to aid if necessary



Wait 30-40 minutes before polishing off haze residue with a clean microfiber cloth. Perform as work progresses while grout is fresh.



Wait 12 hours before performing a 'final polish' to remove any residual haze with a dry terry or microfiber cloth.

TOMEI SERIES ONLY:

Avoid using grouts with angular sands to minimize scratches. Non-sanded grouts are recommended.

Our textured products may benefit from a post-cure 'polish'. Use grout haze remover or diluted Miracle Heavy Duty Acidic Cleaner to remove haze from glass and small surface fissures. Use of a soft bristle brush or Doodle Bug will aid this process. Follow product manufacturer's installation instructions. Always test small area first.

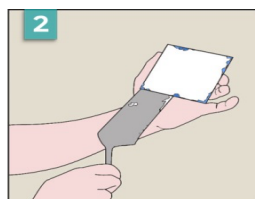
Step-By-Step Back Butter Method

Recommended on individual tiles and tiles 4 x 4" or larger to obtain 100% coverage. Please see our Large Format Glass specific instructions at LunadaBayTile.com

Important: It's critical to the success of the installation to first clean and wipe the back of all tiles prior to installation. We recommend using a 90% or above Isopropyl Alcohol applied to a clean micro fiber cloth. Please ensure that all dirt, dust and debris is removed prior to installation.



Wipe and thoroughly clean back of each tile prior to application of setting material. Please see important note above.



Apply thin-set to 100% coverage of back of tile.



Press tile into properly placed setting material.

SETTING MATERIALS

ARDEX

www.ardexamericas.com

- X 77™ MICROTEC® Fiber Reinforced Thin Set Mortar (Dry Areas Only)
- X 77™ MICROTEC® Fiber Reinforced Thin Set Mortar with E 90™ Mortar Admix (Wet/Dry Areas)
- S 48™ Rapid-Set Mortar (Wet/Dry Areas)

BOSTIK

www.bostik-us.com

- ReFlex® Ultra-Premium Latex-Modified Thin Set Mortar (Dry Areas Only)

CUSTOM BUILDING PRODUCTS

www.custombuildingproducts.com

- Glass Tile Premium Thin-Set Mortar (Wet/Dry Areas)
- MegaFlex® Crack Prevention Mortar (Wet/Dry Areas)
- FlexBond® Premium Crack Prevention Thin-Set Mortar

LATICRETE

www.laticrete.com/home.aspx

- Glass Tile Adhesive Mortar (Wet/Dry Areas)
- 254 Platinum (Wet/Dry Areas)

MAPEI

www.mapei.com/US-EN

- Adesilex™ P10 Bright White mixed with Keraply Mortar Additive (Wet/Dry Areas)

TEC Specialty Products

www.tecspecialty.com

- Super Flex™ Ultra-Premium Thin Set Mortar (Wet/Dry Areas)

Acceptable systems for glass tile installation are continuously revised, as new technologies become available. While we are providing this basic list, this list should not be considered exclusive or complete. There may be other manufacturers who produce suitable installation products, including products we may not be aware of. It is the installer's responsibility to be knowledgeable about the most current recommended systems.

RESOURCES & INDUSTRY GROUPS

(NTCA) National Tile Contractors Association

www.tile-assn.com

(TCNA) Tile Council of North America

www.tcnatile.com

(TTMAC) Terrazzo Tile and Marble Assoc. of Canada

www.ttmac.com

(CTIOA) Ceramic Tile Institute of America, Glass Field Reports

www.ctioa.org

Questions? Please contact our Technical Services Department at TechnicalServices@LunadaBayTile.com

www.LunadaBayTile.com

Lunada Bay Tile provides product information and information concerning installation procedures and maintenance practices to assist each of its customers in making selection, usage, installation and maintenance decisions. Customer's selection and usage of Lunada Bay Tile products and the installation procedure and maintenance practice employed by each customer are outside the direction and control of Lunada Bay Tile and are strictly and completely the choice and responsibility of each customer and their installer. Lunada Bay Tile does not warrant any product for any specific use, nor any installation procedure or maintenance practice, and expressly disclaims all asserted claims after installation of Lunada Bay Tile products. See website for specific warranty.