

ORIGAMI MOSAIC INSTALLATION GUIDELINES (MESH-MOUNTED)

Please read carefully before beginning installation.

Installing glass tile involves some basic procedures that differ from installing ceramic or stone tile. Following these procedures will ensure a successful installation. This guide covers installation of **Origami Mosaic** (mesh-mounted) glass tile on interior walls, backsplashes and showers. Origami Mosaic tile is recommended for interior use only; **mesh mounted glass is NOT intended for use in submerged applications**. For our **Origami Field** glass, please refer to our separate **Origami Field Installation Guidelines**.

The owner or owner's representative is responsible for determining the acceptability of the product. Prior to installation OPEN AND INSPECT ALL BOXES to verify tile series, size/pattern, color and finish. Notify your tile dealer immediately of any damage, defect or other issue. Variation in surface, color, shade, shape and size are inherent in artistic hand-crafted tile. Installation of a test sheet is strongly recommended to ensure acceptability of material. Lunada Bay Tile recommends a random sampling be taken from multiple boxes, inspected and blended prior to and throughout the installation process. Installation constitutes acceptance. We recommend a minimum of 10% overage on all tile orders.

PREPARATION

Glass tile must be installed over a properly prepared substrate—a clean, sound, flat surface that is free of cracks, contaminants, sealers, paint or adhesives. This is one of the most important factors in ensuring a good installation as glass tile has translucent and reflective properties that may reveal the presence of inconsistencies in the substrate.

Approved Surfaces for Setting

Concrete slabs (on grade) cured a minimum of 28 days, free of cracks, curing agents and any signs of laitance.

Well cured mortar beds (ANSI A108.1B Standards-cured a minimum 7 days).

Cement Board/backer units (CBU) to ANSI A118.9 Standards (Note: An ANSI A108A-2.1.8 membrane is required behind all CBU installations in wet areas).

Gypsum board (dry areas only) installed to ASTM C1396 or ASTM C1396M-04 Standards.

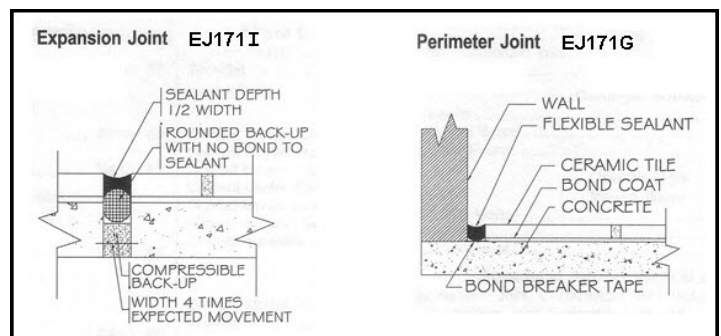
Do not install glass tile directly over particle board, plywood or painted surfaces.

Glass Tile requires a highly modified glass tile approved mortar to properly bond to the substrate. Substrates that require "non-modified" or "lightly modified" setting mortars to adhere tile are NOT acceptable for use with our glass tile products. Please verify compatibility prior to installation with manufacturer of substrate.

Movement/Expansion Joints: Refer to TCNA - EJ171

A soft joint is required between any change in direction or 90-degree angle and any dissimilar material within the tile installation (tile to tile, tile to metal, tile to wood).

Additional movement provisions may be required based on the conditions of the project.



INSTALLATION

Cutting Guidelines

- We recommend **WET** cutting and/or score and snap method **ONLY**
- Do **NOT** dry cut using power tools
- Improper cutting techniques could expose installer to harmful silica dust

Cutting Glass Tile	Drilling Holes
<ul style="list-style-type: none"> • Use ONLY a WET saw with a diamond blade for glass: <i>Montolit CPV Series; Alpha Vetro Series; MK Series</i> • Do NOT dry cut using power tools • To prevent rough edges, glass tiles must be cut slowly 	<ul style="list-style-type: none"> • WET drill tile before installation. Drilling from both sides will minimize chipping and cracking • Use a diamond core bit at low speed (250 to 300rpm) • Constantly wet the tile and drill bit with water during drilling to prevent tile from cracking • Openings should be 1/8" larger than fixture fittings to avoid stress transfer to the tile

Installation Tips

A 3/16"x 1/4" V-Notch trowel is recommended for installation. Check periodically during installation to verify proper coverage.

Step-By-Step Mosaic Installation

1. Work in areas of 6 to 10 square feet. Key in thin-set to substrate with flat edge of trowel.
2. Use 3/16th by 1/4 inch sized V-Notch trowel to achieve uniform gauged thickness.
3. Lightly knock down the tops or ridges of combed thin-set with flat edge of trowel until smooth.
4. Gently seat tile into the thin-set, paying attention to sheet lines.
5. Using a grout float, firmly tap to achieve uniform flatness and full bond.
6. Adjust tiles as needed.
7. Promptly clean excess setting materials from tile surface with a damp sponge.
8. Clean all joints thoroughly prior to grouting.
9. Follow setting material manufacturer's recommended stated cure times prior to grouting.

GROUT SELECTION

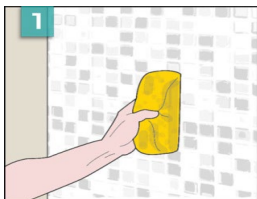
Lunada Bay Tile strongly recommends the use of “translucent” type grout for the Origami Mosaic*. Below is a recommended list by manufacturer and universal color name. See note below if using a different color.

Laticrete Plasma Grout	00-Translucent
TEC Design FX	Crystal
Stainmaster Crystal Glass Grout	Crystal
Bostik Dimension Reflective Grout	Diamond

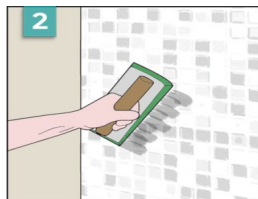
***Note:** When installing our Origami Mosaic glass, we recommend that you avoid using a high contrast grout color as it may highlight any minor imperfections which are inherent in hand made glass tile.

Step-By-Step Grouting

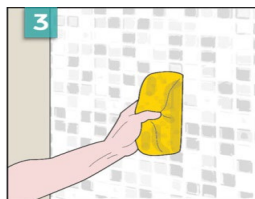
Our large format glass may contain noticeable surfaces variations as a result of the manufacturing process. During the grouting process, these may become more noticeable if grout residue is left to cure on the surface. A soft bristle brush may be used to remove the excess grout from the surface during the initial cleaning phase. It is critical to remove all excess grout from the surface of the tile before the grout is allowed to fully cure.



1
Pre-wash tile with damp sponge to remove any debris or dust.



2
Apply grout with a rubber float making sure joints are free of voids.



3
Use a damp sponge to remove excess grout, leaving only a slight haze residue.



4
Wait 30-40 minutes before polishing off haze or residue with a clean cheesecloth. Perform as work progresses while grout is fresh. Shake out cheesecloth as you go to remove grout dust.



5
12 Hours
Wait 1-2 hours before performing a 'final polish' to remove any residual haze with a dry terry cloth, then aggressively buff glass tile with a dry handful of cheesecloth.

Our Origami Mosaic Glass will benefit from a post-cure 'polish'. To clean excess grout use grout haze remover or diluted Miracle Heavy Duty Acidic Cleaner per manufacturers recommendation. Never spray directly onto the tile and always start at the higher dilution. Use of a soft bristle brush or Doodle Bug will aid this process. Follow product manufacturer's installation instructions. Always test small area first.

SETTING MATERIALS

ARDEXwww.ardexamericas.com

- X 77™ MICROTEC® Fiber Reinforced Thin Set Mortar (Dry Areas Only)
- X 77™ MICROTEC® Fiber Reinforced Thin Set Mortar with E 90™ Mortar Admix (Wet/Dry Areas)
- S 48™ Rapid-Set Mortar (Wet/Dry Areas)

BOSTIKwww.bostik-us.com

- ReFlex® Ultra-Premium Latex-Modified Thin Set Mortar (Dry Areas Only)

CUSTOM BUILDING PRODUCTSwww.custombuildingproducts.com

- Glass Tile Premium Thin-Set Mortar (Wet/Dry Areas)
- MegaFlex® Crack Prevention Mortar (Wet/Dry Areas)
- FlexBond® Premium Crack Prevention Thin-Set Mortar

LATICRETEwww.laticrete.com/home.aspx

- Glass Tile Adhesive Mortar (Wet/Dry Areas)
- 254 Platinum (Wet/Dry Areas)

MAPEIwww.mapei.com/US-EN

- Adesilex™ P10 Bright White mixed with Keraply Mortar Additive (Wet/Dry Areas)

TEC Specialty Productswww.tecspecialty.com

- Super Flex™ Ultra-Premium Thin Set Mortar (Wet/Dry Areas)

Acceptable systems for glass tile installation are continuously revised, as new technologies become available. While we are providing this basic list, this list should not be considered exclusive or complete. There may be other manufacturers who produce suitable installation products, including products we may not be aware of. It is the installer's responsibility to be knowledgeable about the most current recommended systems.

RESOURCES & INDUSTRY GROUPS

(NTCA) National Tile Contractors Associationwww.tile-assn.com**(TCNA)** Tile Council of North Americawww.tcnatile.com**(TTMAC)** Terrazzo Tile and Marble Assoc. of Canadawww.ttmac.com**(CTIOA)** Ceramic Tile Institute of America, Glass Field Reportswww.ctioa.org

Questions? Please contact our Technical Services Department at TechnicalServices@LunadaBayTile.com

www.LunadaBayTile.com

Lunada Bay Tile provides product information and information concerning installation procedures and maintenance practices to assist each of its customers in making selection, usage, installation and maintenance decisions. Customer's selection and usage of Lunada Bay Tile products and the installation procedure and maintenance practice employed by each customer are outside the direction and control of Lunada Bay Tile and are strictly and completely the choice and responsibility of each customer and their installer. Lunada Bay Tile does not warrant any product for any specific use, nor any installation procedure or maintenance practice, and expressly disclaims all asserted claims after installation of Lunada Bay Tile products. See website for specific warranty.