

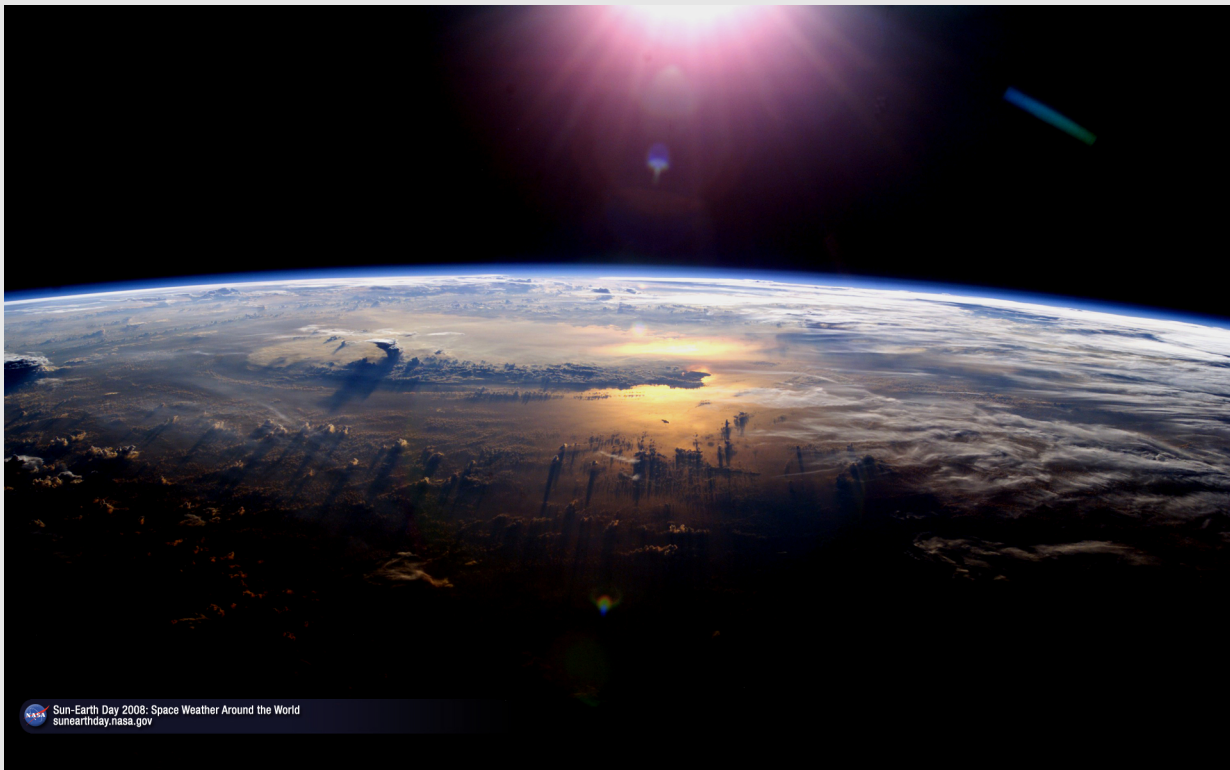
JANUARY CHARITIES 2015

Teatox Australia

The first recipient for the month of January was **Giving what we can**. Climate change is a serious problem. It will have worldwide impact, but is expected to be worst for the poorest and most vulnerable members of society. Below, we discuss three key approaches to reduce the harms of climate change: mitigation, geoengineering, and adaptation. However, it is difficult to reliably estimate their cost-effectiveness. Doing so involves making predictions about the future and extrapolating trends subject to high uncertainty.

Giving What We Can is an international society dedicated to eliminating extreme poverty. Our members and supporters are united in the belief that extreme poverty is one of the biggest problems in the world today, and we are determined to do something about it.

For those of us living in the developed world, our comparative wealth gives us an amazing opportunity to make a real difference. That is why our members take a pledge committing them to donate at least 10% of their incomes to relieving suffering caused by extreme poverty.



With your help, we have been able to donate a large amount to Giving what we can. We certainly hope it makes you feel as good as it makes us feel helping out the Earth that we all share!

To donate, head to www.givingwhatwecan.org

Thanks again for allowing us with your help, to make a difference this month.

Much Love - Teatox Australia xx



Our second recipient for the month of January is the **World Wildlife Organisation** charity who protect the world's most endangered species. Here is a bit of info on the charity, and what they do.

"We work to conserve the world's most important natural places and significantly change global forces to protect the future of nature. Our experts are active at every level—from field work to government—conserving the largest tropical rain forests, the most remote areas of our planet, and the world's most endangered species.

And this month, in the month of January we have decided to adopt a beautiful Panda bear!

Pandas are found only in the temperate forests of China. Although classified as a carnivore, the panda's diet consists almost exclusively of bamboo. Despite being one of the most popular animals in the world, pandas are threatened by habitat fragmentation and unsustainable development. It is estimated that 1,600 pandas remain in the wild. WWF is the primary international conservation organization protecting pandas and their habitat.

With 100% of the donations going directly to the welfare of the Pandas, we felt that it was a great charity in need of our help! And thanks to you all, we have been able to adopt a Panda in need for 1 year providing him/her with care, welfare, food, veterinary costs and a rehabilitation programme run by dedicated vets and keepers.

To donate to the World Wildlife Organisation, visit their website at www.worldwildlife.org

Thanks again for allowing us with your help, to make a difference this month.
Much Love - **Teatox Australia** xx