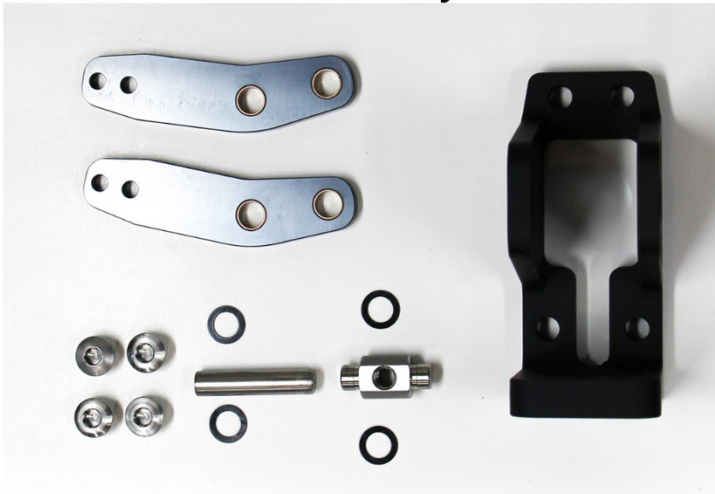
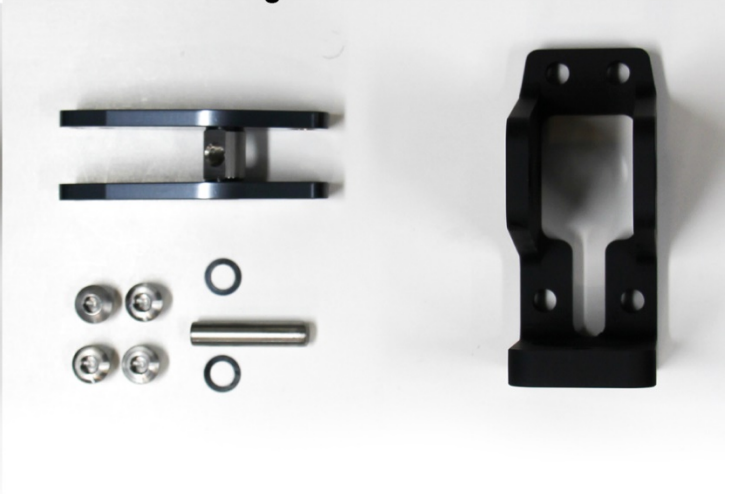


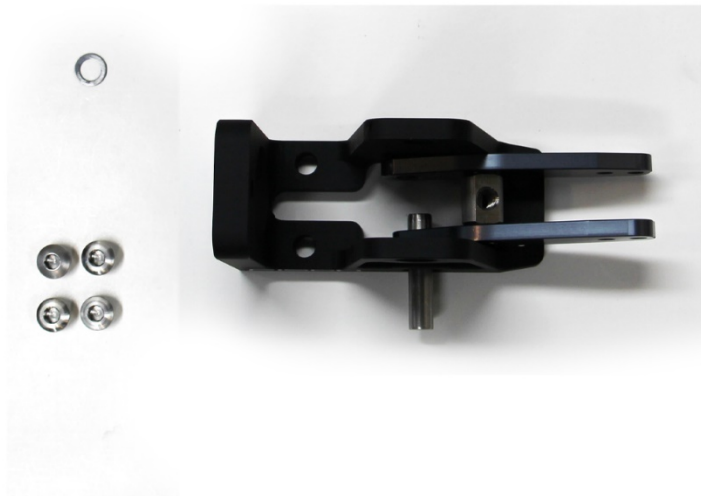
Fisch Hydraulic E Brake with Rear Facing Master



Make sure you have all of the components.
The nylon washers are essential to prevent side to side play



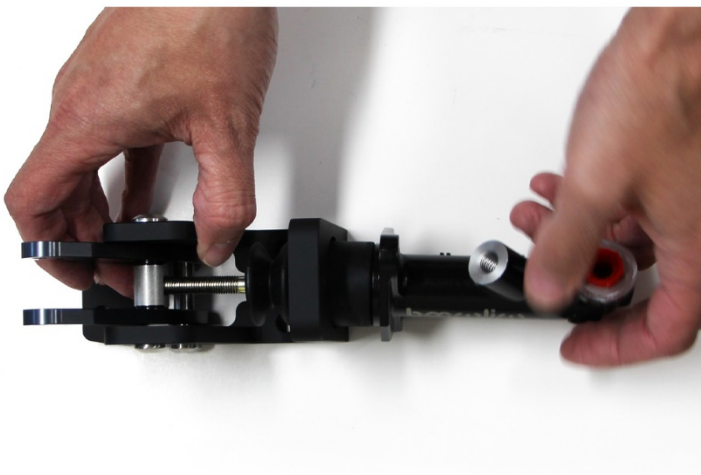
Assemble the arm with the threaded pivot pin closer to the handle
Make sure you put nylon washers between the pin and the arms



Install the smooth pivot pin into the lower hole on the base
The last 2 nylon washers go between the arms and the base



Install the stainless cap screws into the base. Not too tight
These will center the pivot pin and prevent any remaining play

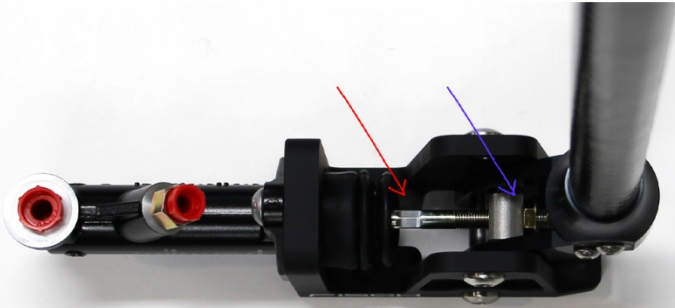


Turn the master into the threaded pivot pin until there is about 10mm sticking past
You can also do this by turning the piston, rather than the full master



Install the two screws that hold the master to the base
This may be easier with the brake line fitting removed

Fisch Hydraulic E Brake with Rear Facing Reservoir



Install the handle vertically or horizontally
Fine tune the handle angle using the 1/4" hex that is behind the dust boot (red)
Tighten the jam nut against the threaded pivot to prevent angle adjustment (blue)



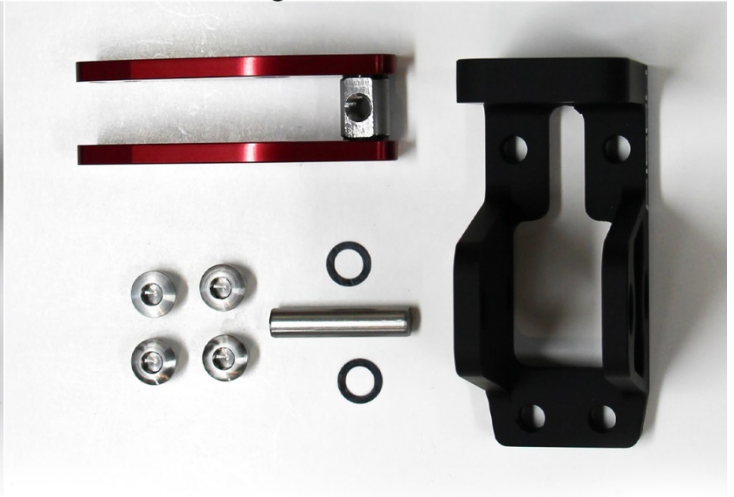
External Reservoir Order of Installation



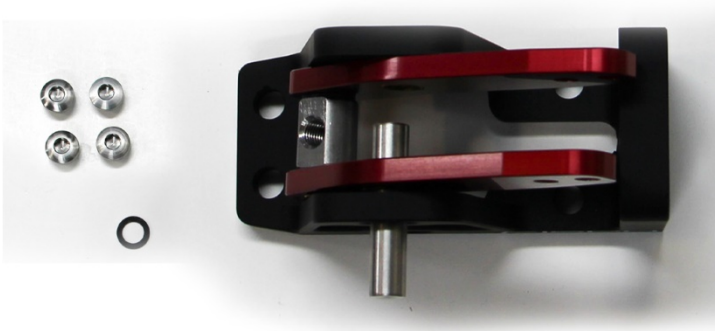
Fisch Hydraulic E Brake with Front Facing Master



Make sure you have all of the components.
The nylon washers are essential to prevent side to side play



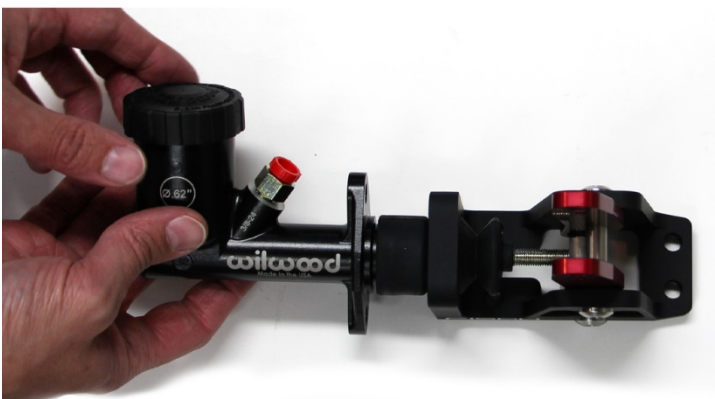
Assemble the arm with the threaded pivot pin closer to the handle
Make sure you put nylon washers between the pin and the arms



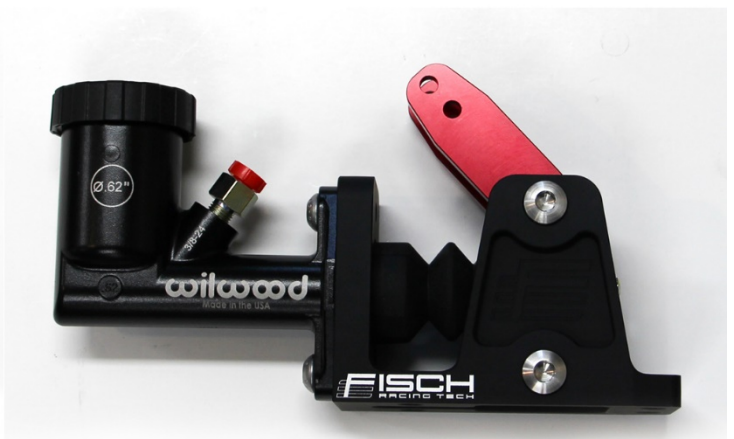
Install the smooth pivot pin into the lower hole on the base
The last 2 nylon washers go between the arms and the base



Install the stainless cap screws into the base. Not too tight
These will center the pivot pin and prevent any remaining play

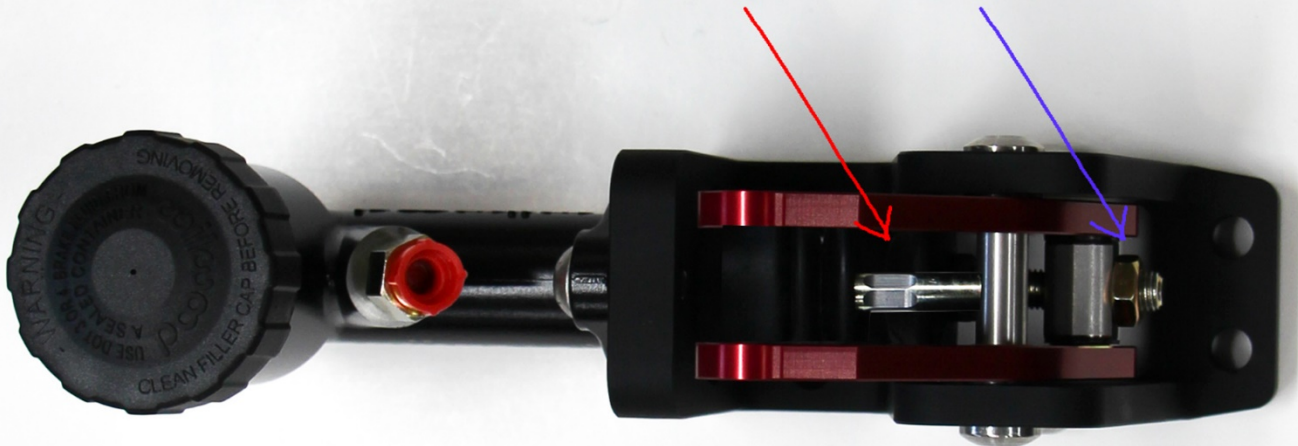


Turn the master into the threaded pivot pin until there is about 10mm sticking past
You can also do this by turning the piston, rather than the full master



Install the two screws that hold the master to the base
This may be easier with the brake line fitting removed

Fisch Hydraulic E Brake with Front Facing Master



Install the handle vertically or horizontally

Fine tune the handle angle using the 1/4" hex that is behind the dust boot (red)

Tighten the jam nut against the threaded pivot to prevent angle adjustment (blue)

