

TECHNICAL SPECIFICATIONS MODEL QL	QL 2	QL 3	QL 4
Dimensions of workpiece:			
Height max.	100 mm	100 mm	100 mm
Width max.	300 mm	300 mm	300 mm
Length min.	380 mm	380 mm	380 mm
Length max.	Infinity	Infinity	Infinity
Throughfeed speed	5-25 m/min	5-25 m/min	5-25 m/min
Spindle speed	200-1100 rpm	200-1100 rpm	200-1100 rpm
Spindle length horizontal	300 mm	300 mm	300 mm
Spindle length vertical	-	150 mm	150 mm
Number of spindles (number of brush)	2 (4)	3 (6)	4 (8)
Total number of QD/QN	94/47	116/58	136/68
Spindle motor horizontal	4 x 0,55 kW	4 x 0,55 kW	4 x 0,55 kW
Spindle motor vertical	-	2 x 0,37 kW	4 x 0,37 kW
Conveyor motor	0,75 kW	0,75 kW	0,75 kW
Dust collection duct	2 x 90 mm	3 x 90 mm	4 x 90 mm
Exhaust capacity	2500 m³/h	3000 m³/h	3500 m³/h
Dimensions	1400x1200x1950 mm	2200x1200x1950 mm	2200x1200x1950 mm
Net weight	700 Kg	790 Kg	850 Kg

QuickWood



QL

2•3•4

Continuous feed automatic brushing machine for the finishing and sealer sanding of the profiles.



APPLICATIONS

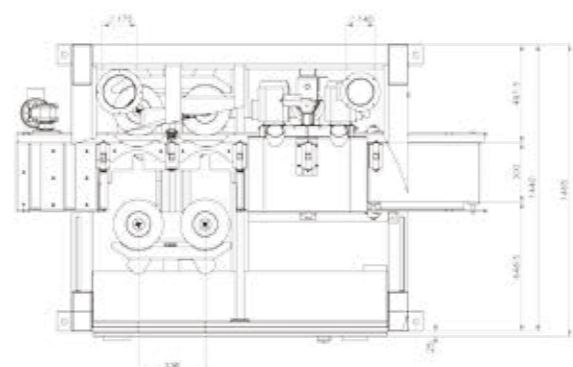
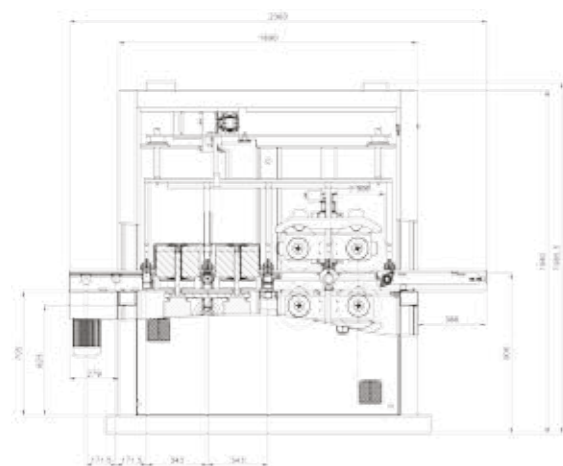
- Window mouldings
- frame mouldings
- Glass mouldings
- Profiled boards
- Edge mouldings
- Boardings
- Profiled mouldings

CHARACTERISTICS

- Arrangement of the rotating brushes at 360 ° around the profile
- Robust frame suitable for the absorption of any effect induced by the brushing-sanding action
- Speed of rotation of brushes continuously adjustable by inverter
- Stability of the piece guaranteed by self-regulating pressure rollers
- Feed rate from 5 to 25 m / min continuously adjustable by inverter

ADVANTAGES

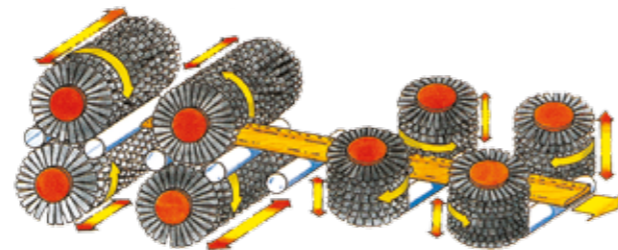
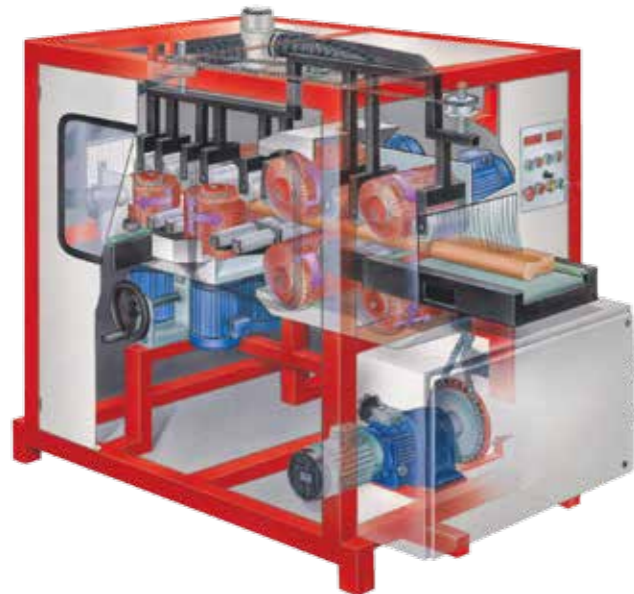
- Loose fibres are removed from the surface
- The sealer sanding is considerably reduced or completely avoided
- Easy change of abrasive tools because of quick change removeable spindles
- Possibility of custom edesigns with the number of modules of your choice
- PLC control available as extra equipment
- On request automatic system for return conveyor system of the work piecesA



MODEL QUICKWOOD QL

It is an automatic continuous roller conveyor machine that is particularly suitable for the finishing of straight elements such as door and window posts, beads, skirting boards, frames and profiles in general. The brushing action is based on the QUICKWOOD SYSTEM principle consisting of modular and oscillating sanding discs both in choice grain abrasive canvas. QD, both in abrasive hair Tynex mod. QN, both in bristles and abrasive model Quick Flex. The machine is made up of a standard number of 4 sets of brushing modules each comprising two counter brushes. Each pair of modules is housed in a modular area so, on request, you can assemble a custom machine with how many modules you want. The 4 modules (for a total of 8 brushes) are positioned over-sub-directional and work on all 4 sides of a profile. All modules can be angled by $\pm 25^\circ$. All modules carry hexagonal profile aluminum shafts for best transmission of rotation power, equipped with a quick change brush system. The speed of brush rotation is continuously adjustable

with electronic frequency inverter. A set of self-regulating pressure rollers has the task of keeping the work pieces in place. Their working height is easily adjusted using a manual handwheel. On request, automatic pressure regulation via a pneumatic device controlled by photocells, automatic height and width adjustment of all modules and programming of all these functions via PLC and Touch Screen. The standard feed rate is adjusted from 5 to 25 m / min with a mechanical motor variator. If desired, higher speeds can be achieved with other types of smoothing elements. Respect for the environment has put the worker in the face of difficult problems with the use of water paints. In fact, the surface of the wood becomes very rough and a lot of solution. Well appreciated is the QUICKWOOD SYSTEM prewash system with final brushing on the impregnation. The QUICKWOOD QL and QUICKWOOD MODUL 150 models complete here as the ultimate and in-line solution for the water-impregnated profile.



The photo shows a 4-sided sanding device



SPECIAL VERSION

SPECIAL VERSIONS

- With electrical positioning
- With automatic dimension profile reader
- To reduced interest for short parts up to 280 mm
- With multiple modules up to 32 brushes
- With the addition of the QRC Modul



CHARACTERISTICS

- 8 or more brushes arranged at 360° with respect to the workpieces
- Adjustable inclination for the profile step
- QRC module for the superfinishing of the flat parts in view
- Automation for translation and return of workpieces

ADVANTAGES

- Intervention on all sides at the same time
- Excellent finish even in 90° profiles
- High Productivity
- Fully protected and aspirated working environment

