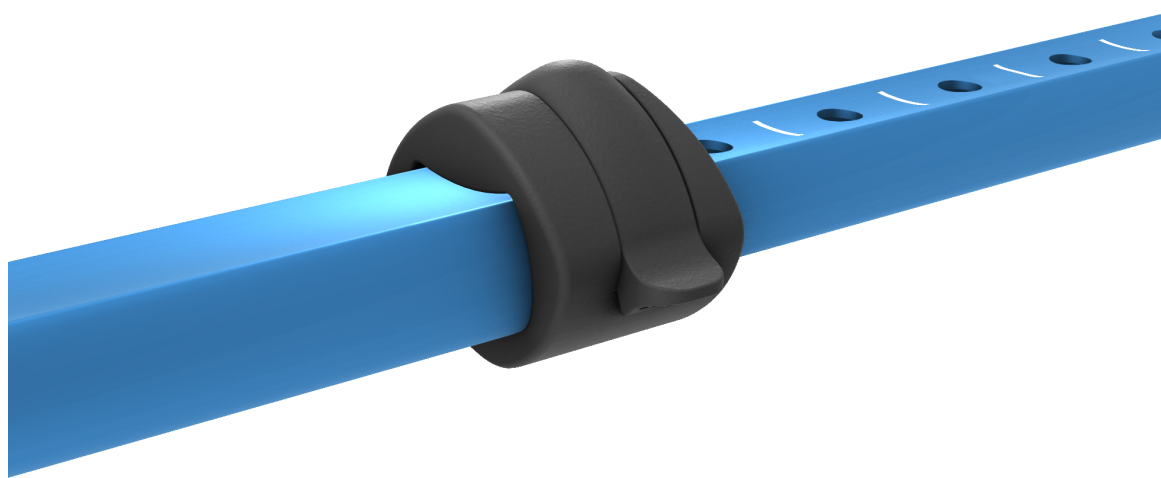


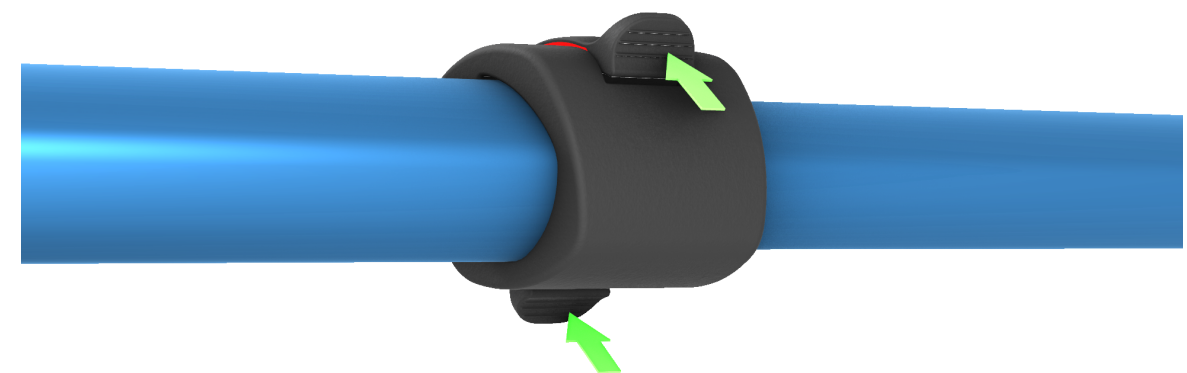


CLIP ADJUSTMENT INSTRUCTIONS

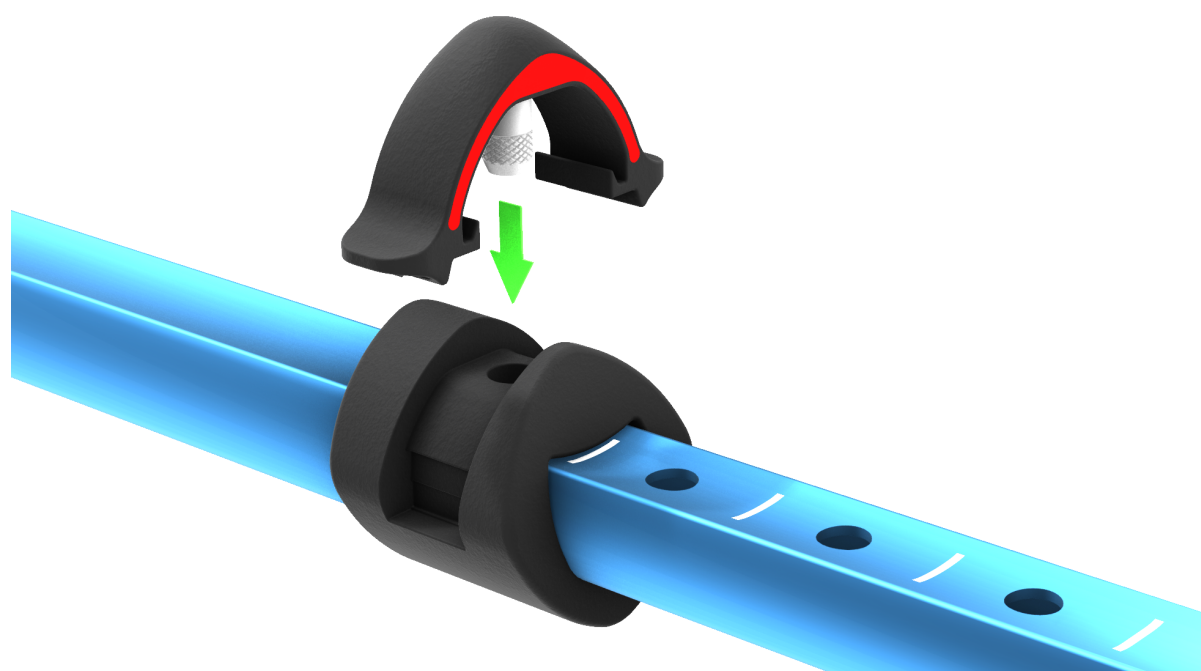
You will need the Dynamo Adjustment Clip (Part Number 1260c) to complete this replacement. Can be purchased at dynamome.com under Replacement Parts.



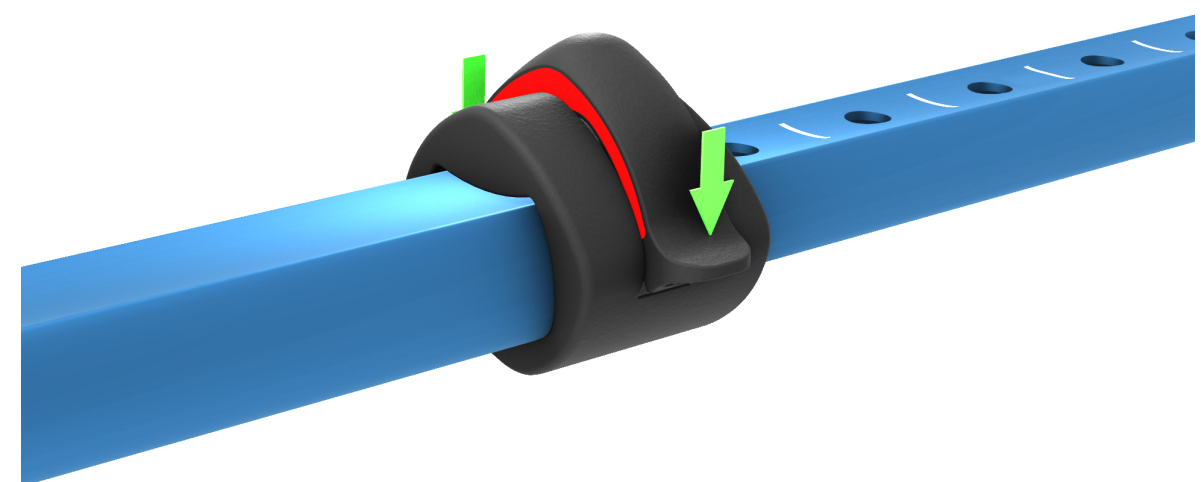
STEP 1: Review fully-locked clip position. Clip is flush. Red mark is not showing.



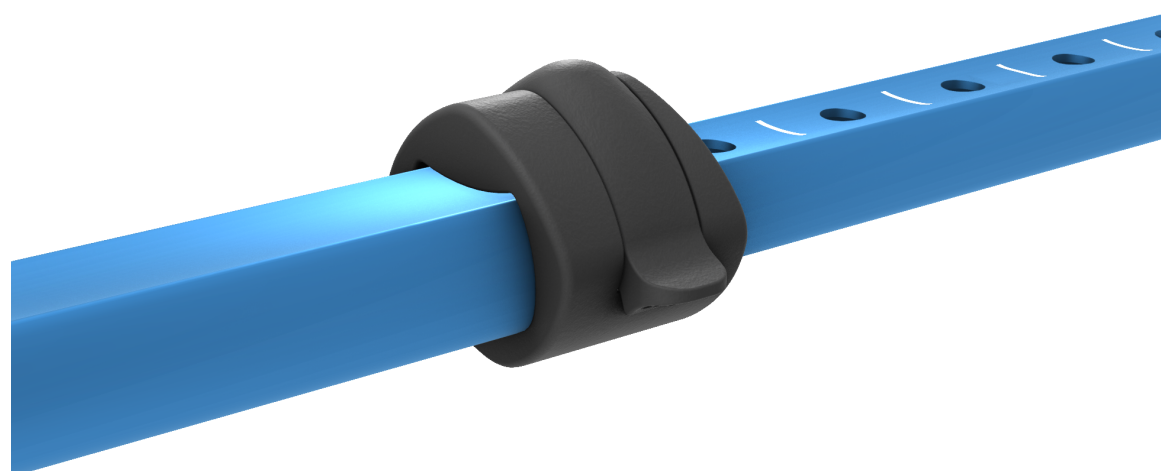
STEP 2: Pull clip back to unlock clip (see red mark). Adjust cane height to your height.



STEP 3: Adjust cane height. Align to white marker line. There are six (6) height settings. It's okay if the clip comes off completely.



STEP 4: Place clip back. Align settings. Push clip back in slightly (Click 1).



STEP 5: Fully push clip into locking system to complete assembly (Click 2). Clip is flush. Red mark is not showing.

QUESTIONS?

Email us at:
Questions@dynamome.com

Or visit us at:
dynamome.com

MORE INFO HERE:



WARNING: To minimize the risk of injury from improper and unsafe use of this product, read all instructions and safety precautions before using.

SAFETY PRECAUTIONS: Consult a physician before using any assisted mobility device. Always inspect your mobility device prior to each use. Do not use if product or parts are missing or damaged.