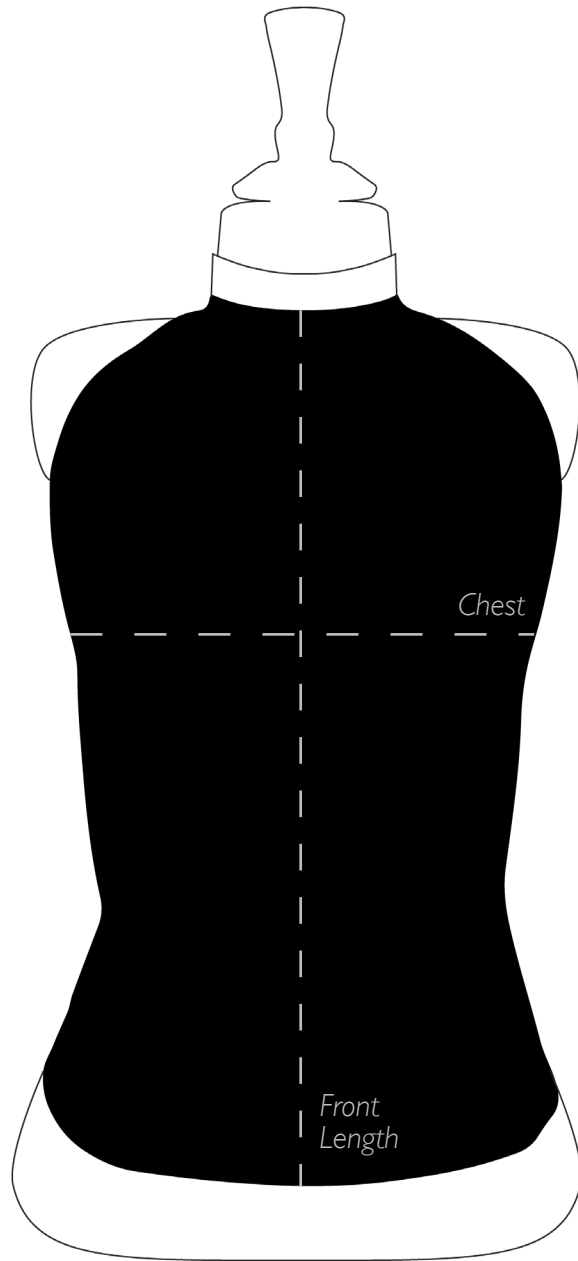


Women's Vest Stock Size Guide



Our Women's Vest Stocks are available in three sizes, each aimed to accommodate a range of measurements. These are indicated in the table below. Each Vest Stock is then customisable by front length.

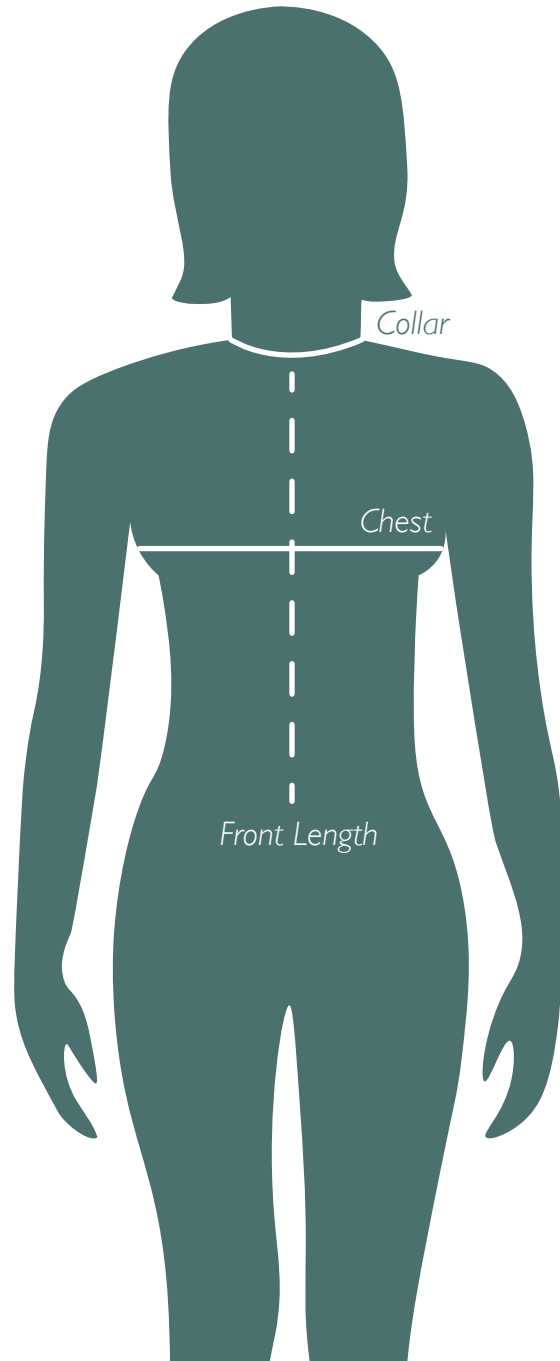
We have designed our vest stocks to be adjustable at the chest with elastic, and to fit a large range of collar sizes.

Please note our collars are sold separately.

Size	Chest	Collar Size
Small	34" - 36"	14" +
Medium	38" - 40"	14.5" +
Large	40" - 42"	15" +

Front Length
19"
20"
20 1/2"

How to Measure



Please ask someone to help you take your measurements.

Chest: Place the tape under the arms and around the fullest part of the chest, allow room for two fingers underneath.

Collar Size: This refers to the collar size you would typically wear.

Front Length: The front length is measured from the base of the collar to the hem of the garment. Measure from the base of your neck at the front to determine the appropriate length for you.

If you have any questions at all please do not hesitate to get in contact so a colleague can assist.