



Bespoke Stole Guide



Thank you for your interest in commissioning a bespoke stole for your church. With all bespoke commissions, there are quite a lot of design details to consider; this document intends to guide you through the different aspects of your new vestments.

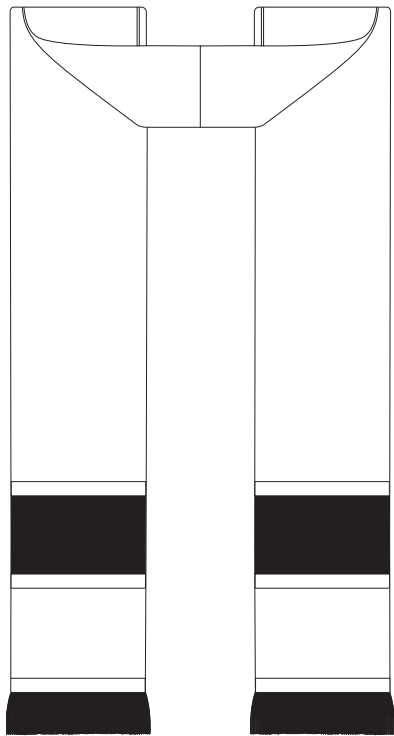
We have detailed the design process in four main steps:

- 1 - Style
- 2 - Fabrics
- 3 - Trims
- 4 - Embroidery

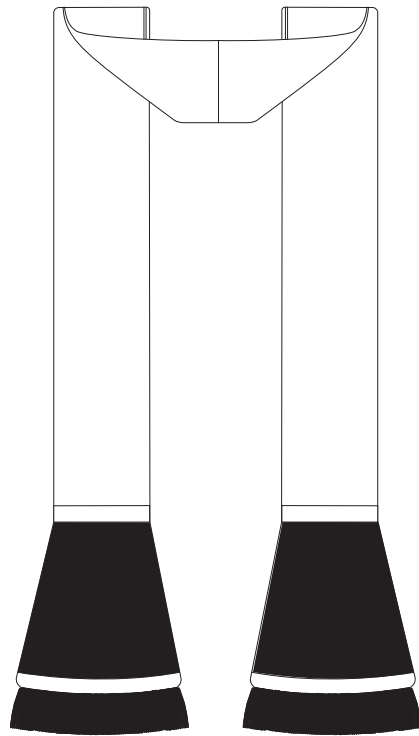
Step One - Style

The first step to ordering your new stole is to decide which style you would like. Our stole patterns are based on centuries of tradition, and we can accommodate any preference. Let us know if you have any special requirements, such as an altered length; if you are unsure about the correct length for you, we're always happy to offer guidance. Our Standard stoles measure 54" per side (incl. fringe).

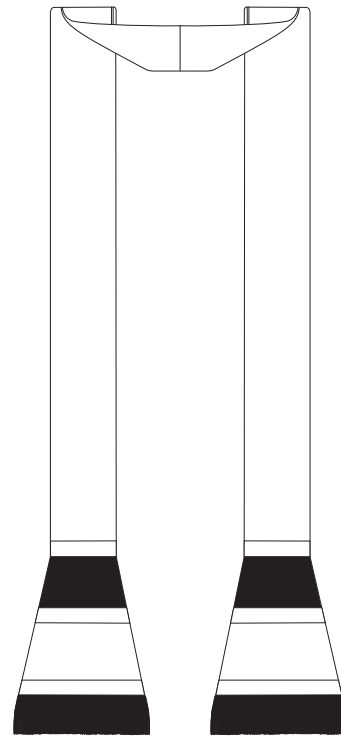
Our stoles are available with a V-shaped neck or with a diaconal tie on request. You can also choose whether your stole has contrast or outline orphreys (as well as an option for thinner, Sarum-style orphreys).



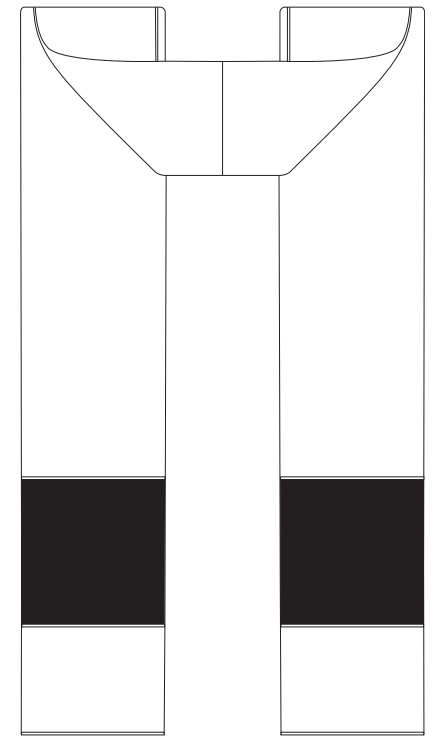
Tufton



Gothic



Sarum

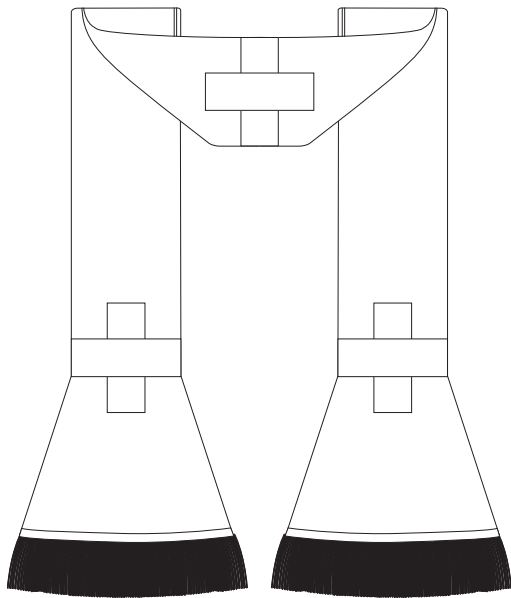


Romanesque

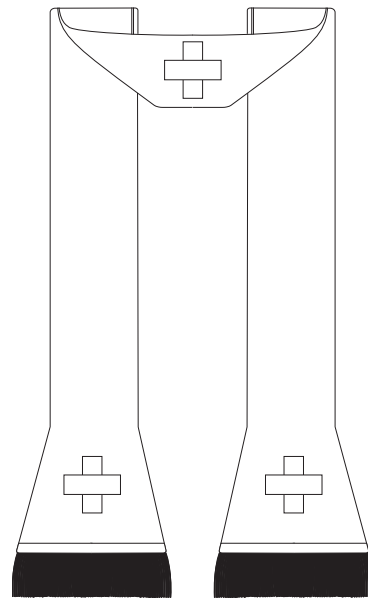
Step One - Style (continued)

We also offer a range of Continental stoles. Instead of orphreys, these styles feature three braid crosses (one at each stole end, and one at the neck) in a braid of your choice. Our Continental stoles measure 48" per side (incl. fringe).

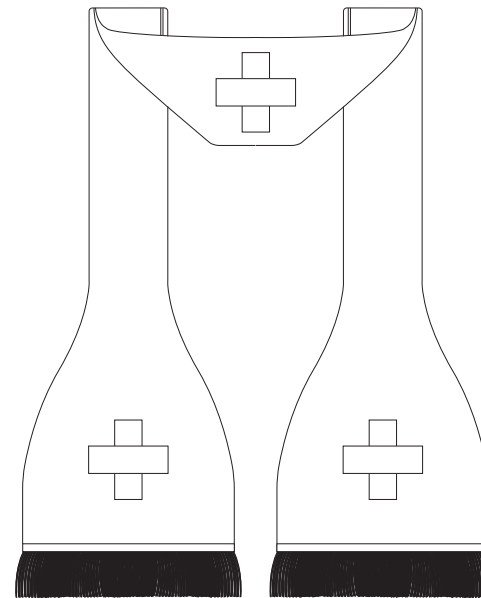
Instead of braid crosses, you may also opt for three appliqué crosses at an additional cost.



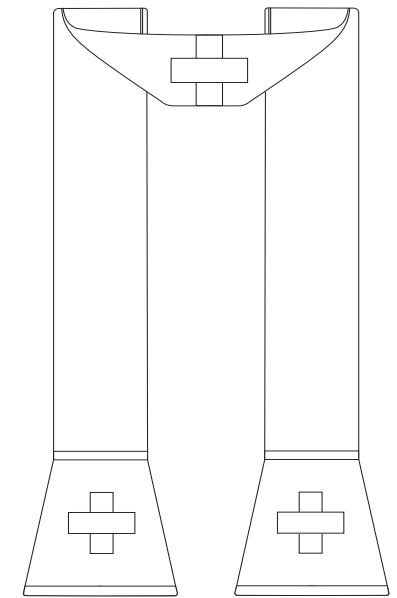
Roman



Spanish



French



Neri

If your preferred stole style is not pictured, or you would like to alter these designs in any way, then just let us know and we'd be happy to look into a custom stole for you.

Step Two - Fabrics

The next step is to choose your main fabric and any contrasting orphreys. We are pleased to offer over 200 exclusive fabrics, including a range of luxurious pure silks and silk blends.

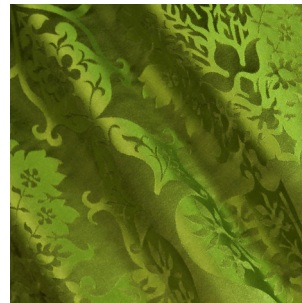
Our experienced design team is on hand to guide you through the possible combinations, and to help with decision making if needed. Below is a selection of some of our favourite fabrics for vestments; browse our website for our full range.



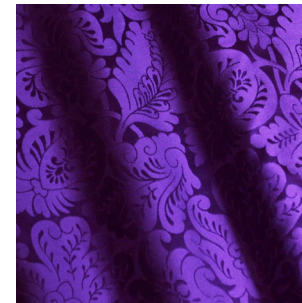
Comper Cathedral - Cream



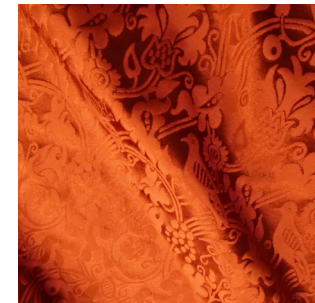
Bellini - Comper Purple



Gothic - Green



Holbein - Royal Purple



Hilliard - Sarum Red



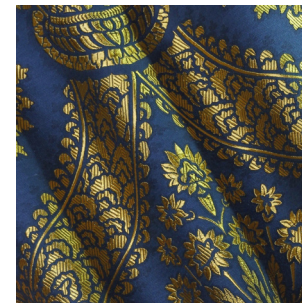
Comper Strawberry - Gold,
Blue, Purple



Crevelli - Brocatelle Garnet



Stag - Cloth of Gold



Memlinc - Blue & Gold



Talbot - Black

Please get in contact if you would like samples of any the fabrics you are interested in.

Step Three - Trims

The next step is to decide the style and colour of trims for your orphreys and stole ends. Select from our wide range of braids and fringes -including our exclusive 'Diamond & Lay' which are colour-matched to our silks. Please view our [trimmings guide](#) for the full range of styles and colours available.

For an additional charge, we can also include any of the following: Gold appliqué cross couched down in Japanese Gold Thread, a braid cross to match the trims, or even additional orphreys.



Gold appliqué cross couched down in Japanese Gold Thread; on Royal Purple 'Gothic'.



Braid cross of Blue Bellini 'Diamond & Lay' on Green 'Shrewsbury'.



Additional orphreys of Blue 'Bellini' edged in Black/Gold 'Diamond & Lay' 1/2" braid; on a Sarum-style stole in Black 'Gothic'.

You also need to choose how you would like your stole to be lined: in cotton sateen, or luxury silk taffeta for an additional cost.

Step Four - Embroidery

An additional step is to consider any embroidery that you may like. Our talented team of hand-embroiderers can cater to any design you desire, and our design team can offer suggestions on what might be most suitable for your church. We specialise in traditional hand embroidery techniques, such as goldwork, silk shading, appliqué, as well as the highest forms of artist-led machine embroidery.

Let us know where you would like embroidery on your stole - perhaps on the orphreys, at the neck, or even across the whole vestment.



Design Example

In this stole example, we chose a Tufton style with contrasting orphreys.

The main fabric here is our Cream 'Comper Cathedral', which has been paired with Bellini Blue 'Hilliard' orphreys. They are brought together with our Bellini Blue 1/2" 'Diamond & Lay' braid.

It features a braid cross at the stole neck of the same trim. Matching 2" fringe has been included at the stole ends. It has then been lined in a blue cotton sateen.

In the orphreys, we have hand embroidered Agnus Dei and Maria Regina designs using silk appliqué couched down in Japanese Gold Thread. Each design is approx. 3" x 3".

Altogether, these elements create a stunning vestment!



Watts's Design Service

For more complex commissions we recommend opting for our design service, where our experienced graphic designers create a 'mock-up' of your potential set. This is available for a deposit against the full order, and you can ask for 3 re-designs if needed. These digital renderings of your design are a great way to visualise new vestments. If you would like any embroidery on your pieces, then our design team can virtually create different options for you to consider, enabling you to be confident in your new set before the fabric is even cut.



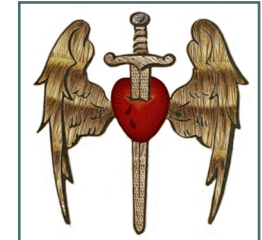
Mock-up of a Gothic Stole in Green 'Comper Cathedral' with Green/Gold 'Crevelli' orphreys and gold appliqué cross.



Mock-up of a Tufton Stole in Gold, Blue, and Purple 'Comper Strawberry', with blue velvet orphreys and Comper Purple trims.



Mock-up of a Tufton Stole in cream 'Comper Cathedral' with orphreys of blue 'Hilliard'. Featuring embroideries of an Auspice Maria, Maria Regina, and Our Lady symbols, as well as a hand-knotted fringe.



If you have any questions, please contact us,
we'll be happy to help.

Rosie Thompson, Head of Sales & Bespoke
rosie.thompson@wattsandco.com

Joshua Minor, Bespoke Co-ordinator
joshua.minor@wattsandco.com

Olivia Hooper, Bespoke Assistant
olivia.hooper@wattsandco.com

Phone
+44 20 7222 7169

www.wattsandco.com