



Bespoke Chasuble Guide



Thank you for your interest in commissioning a bespoke chasuble for your church. With all bespoke commissions, there are quite a lot of design details to consider; this document intends to guide you through the different aspects of your new vestments.

We have detailed the design process in four main steps:

1 - Style

2 - Fabrics

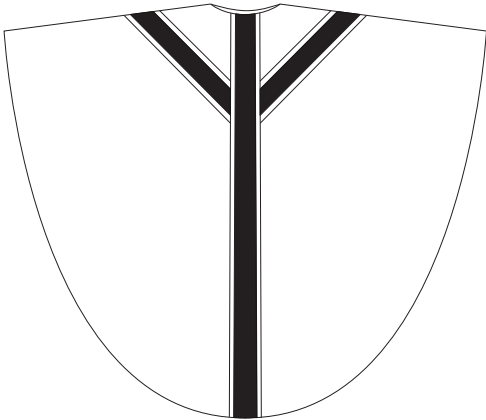
3 - Trims

4 - Embroidery

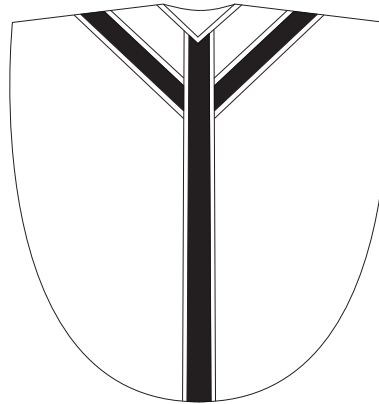
Step One - Style

The first step to ordering your new chasuble is to decide which style you would like. Our chasuble patterns are based on centuries of tradition, and we can accommodate any preference. Let us know if you have any special requirements, such as an altered back length; our standard back lengths are noted below.

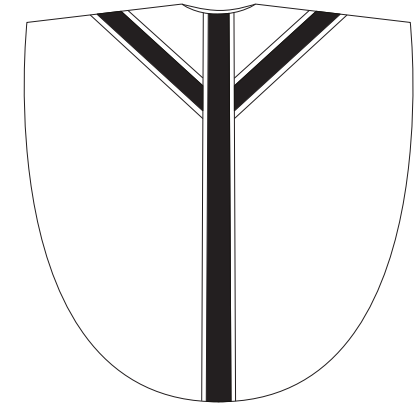
You can also choose whether your chasuble has contrast, or outline orphreys (as well as an option for thinner, Sarum-style orphreys).



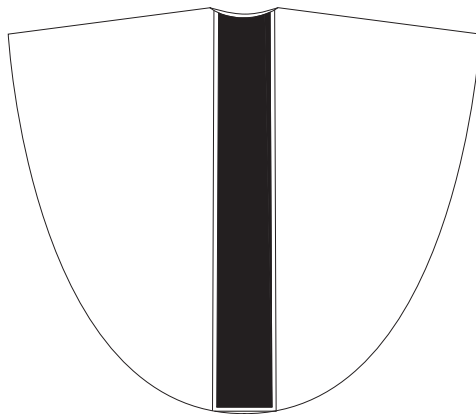
Full Gothic - 48" / 122cm



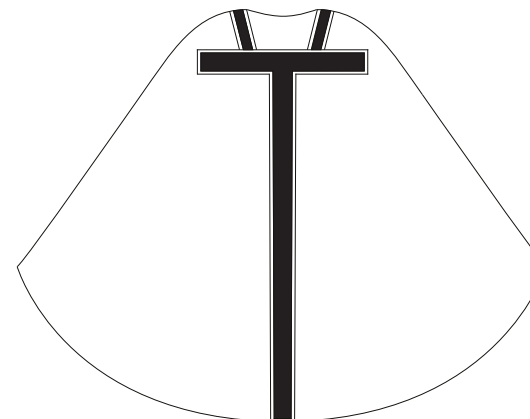
Pugin - 43" / 109cm



Semi Gothic - 43" / 109cm

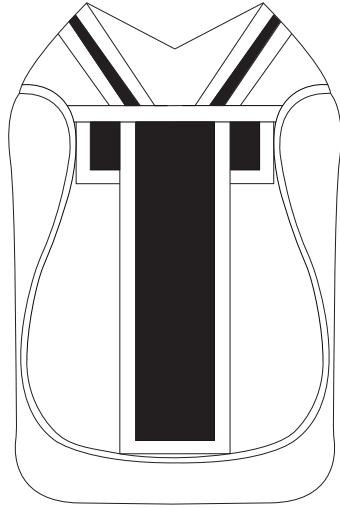


Classic - 48" / 122cm

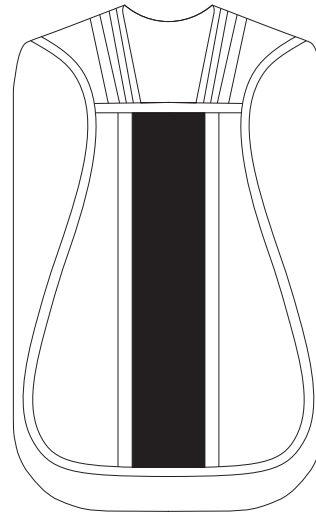


Conical - 49" / 125cm

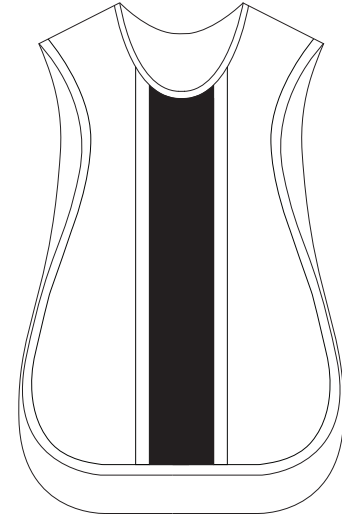
Step One - Style (continued)



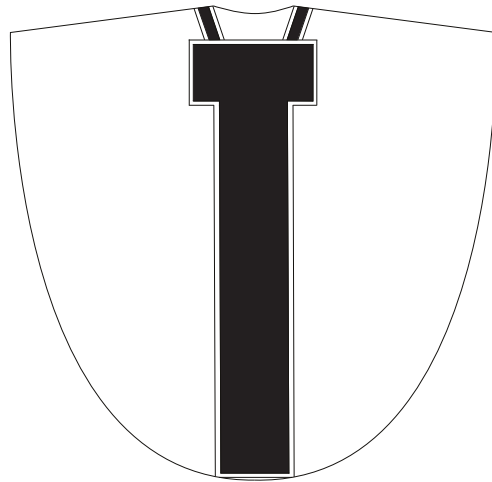
Roman - 41" / 104cm



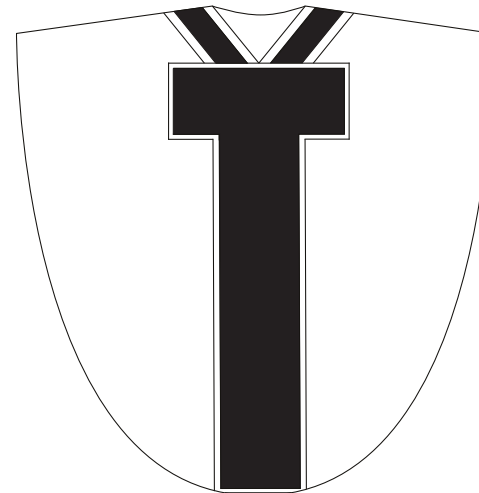
French - 44" / 112cm



Spanish - 42.5" / 108cm



Borromean - 46" / 117cm



Neri - 46" / 117cm

Step Two - Fabrics

The next step is to choose your main fabric and any contrasting orphreys. We are pleased to offer over 200 exclusive fabrics, including a range of luxurious pure silks and silk blends.

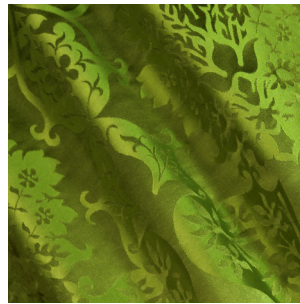
Our experienced design team is on hand to guide you through the possible combinations, and to help with decision making if needed. Below is a selection of some of our favourite fabrics for vestments.



Comper Cathedral - Cream



Bellini - Comper Purple



Gothic - Green



Holbein - Royal Purple



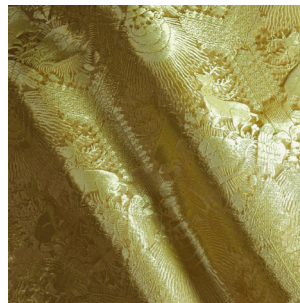
Hilliard - Sarum Red



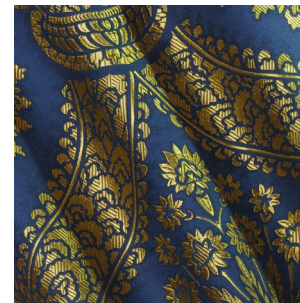
Comper Strawberry - Gold,
Blue, Purple



Crevelli - Brocatelle Garnet



Stag - Cloth of Gold



Memlinc - Blue & Gold



Talbot - Black

Please get in contact if you would like samples of any the fabrics you are interested in.

Step Three - Trims

The next step is to decide the style and colour of trims for your chasuble orphreys. Select from our wide range of braids and fringes - including our exclusive 'Diamond & Lay' which are colour-matched to our silks. Please view our [trimmings guide](#) for the full range of styles and colours available.

Depending on your style of chasuble, you have the option for matching small cord at the neck. For an additional charge, we can also include small cord, braid, or fringe on the hem of the vestment for extra cohesion.



Our 'Diamond & Lay' trims in Black / Gold. Pictured here: 2" fringe, 1" braid, 1/2" braid, and small cord.

You also need to choose how you would like your chasuble to be lined: in cotton sateen, or luxury silk taffeta for an additional cost.

Step Four - Embroidery

An additional step is to consider any embroidery that you may like. Our talented team of hand-embroiderers can cater to any design you desire, and our design team can offer suggestions on what might be most suitable for your church. We specialise in traditional hand embroidery techniques, such as goldwork, silk shading, appliqué, as well as the highest forms of artist-led machine embroidery.

Let us know where you would like embroidery on your chasuble - perhaps in a quatrefoil, along the orphreys, or even across the whole vestment.



Design Example

In this chasuble example, we chose a Semi-Gothic style with contrasting orphreys.

The main fabric here is our Sarum Red 'Holbein', which has been paired with Sarum Red & Gold 'Gothic' orphreys. They are brought together with our Sarum Red & Gold 1/2" 'Diamond & Lay' braid.

Matching small cord has then been included at the neck and hem of the chasuble. The vestment is then lined with a light green silk taffeta.

In a braid shield on the front and back of the chasuble, we have embroidered an IHS & sunburst motif, entirely in Japanese Gold Thread. This design is approx. 6" x 8".

Altogether, these elements create a stunning vestment, which has been completed with a matching Gothic-style stole.

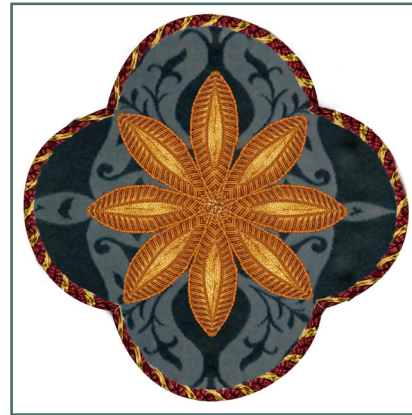


Watts's Design Service

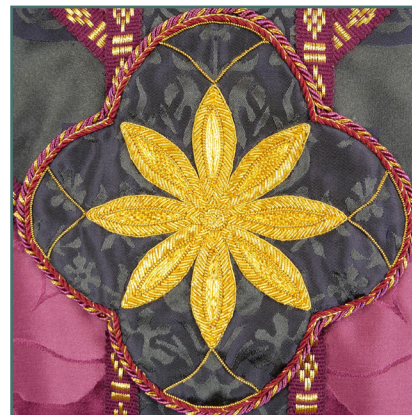
For more complex commissions we recommend opting for our design service, where our experienced graphic designers create a 'mock-up' of your potential set. This is available for a deposit against the full order, and you can ask for 3 re-designs if needed. These digital renderings of your design are a great way to visualise new vestments. If you would like any embroidery on your pieces, then our design team can virtually create different options for you to consider, enabling you to be confident in your new set before the fabric is even cut.



Mock-up of a Semi-Gothic chasuble in cream 'Comper Cathedral' with red/gold 'Holbein' orphreys, featuring embroidery on the shoulders and intersection of the orphreys.



Mock-up and finished embroidery of a gold work design in a quatrefoil; featured on a Semi-Gothic chasuble in Comper Purple 'Bellini' and Sarum Indigo 'Gothic'.



Mock-up of a Roman chasuble in cream 'Comper Cathedral' with Canterbury blue/gold 'Holbein', featuring Auspice Maria motif in goldwork in the rear orphreys.

If you have any questions, please contact us,
we'll be happy to help.

Rosie Thompson, Head of Sales & Bespoke
rosie.thompson@wattsandco.com

Joshua Minor, Bespoke Co-ordinator
joshua.minor@wattsandco.com

Olivia Hooper, Bespoke Assistant
olivia.hooper@wattsandco.com

Phone
+44 20 7222 7169

www.wattsandco.com