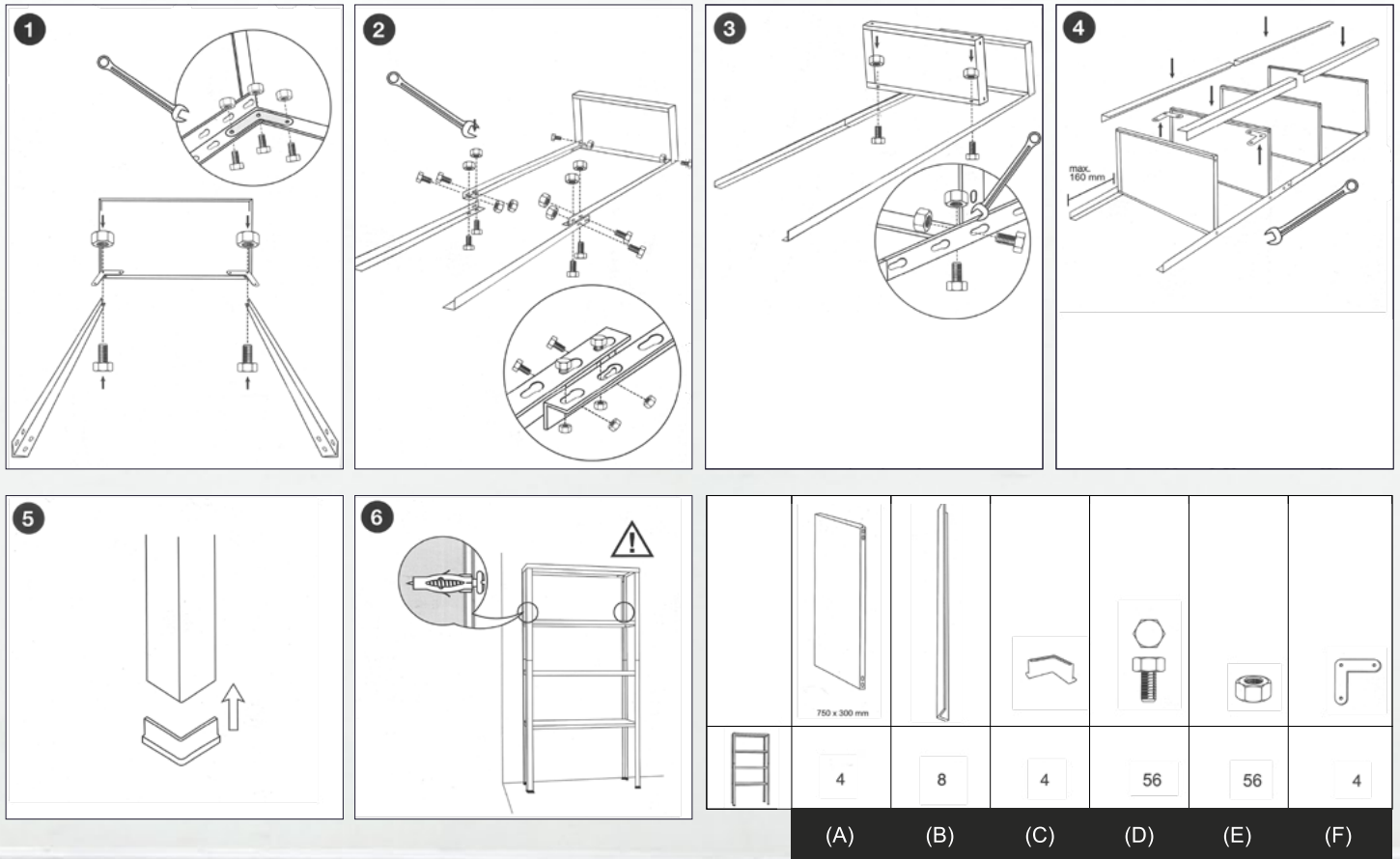


MODEL: **994208**



THIS UNIT MUST BE FIXED TO A WALL

- INFORMATION**
IF IN ANY DOUBT, PLEASE CONTACT YOUR SUPPLIER
- READ THIS GUIDE THOROUGHLY BEFORE COMMENCING WITH ASSEMBLY** AND RETAIN FOR FUTURE REFERENCE
- BEFORE COMMENCING WITH ASSEMBLY, **UNPACK CAREFULLY AND CHECK THAT ALL REQUIRED COMPONENTS ARE INCLUDED**
- ASSEMBLY SHOULD BE UNDERTAKEN BY A **MINIMUM OF TWO COMPETENT PERSONS**
- THIS UNIT **MUST BE FIXED TO A WALL**
- CAUTION**
ENSURE THAT YOU:
- TAKE CARE DURING ASSEMBLY AND USAGE OF THE PRODUCT, ESPECIALLY WHEN LIFTING, STRETCHING & USING TOOLS**

- WEAR APPROPRIATE CLOTHING.** PROTECTIVE GLOVES AND FOOTWEAR ARE RECOMMENDED
- ALWAYS BUILD ON A SUITABLE LEVEL FLOOR,** WHICH IS STRONG ENOUGH TO SUPPORT THE LOAD AND ALLOW ADEQUATE WORKING SPACE
- DISPOSE OF PACKAGING MATERIALS RESPONSIBLY**
- WARNING**
IMPORTANT RULES FOR SAFE USE:
- ENSURE THAT THESE INSTRUCTIONS ARE RETAINED FOR REFERENCE AND THAT USERS ARE AWARE OF THE RULES FOR SAFE USE
- NEVER CLIMB ON THE STRUCTURE** OR STAND ON THE SHELVING
- DO NOT LEAN ANY OBJECT AGAINST THE UNIT**

- ALWAYS USE A STEP LADDER** TO REACH HIGH SHELVES
- DO NOT USE IN DAMP OR WET CONDITIONS**
- LOAD HEAVIER ITEMS** ON THE LOWER SHELVES AND LIGHTER ITEMS ON THE HIGHER SHELVES
- THIS PRODUCT IS DESIGNED FOR **HAND LOADING ONLY**
- ENSURE THAT THE MAXIMUM LOAD BEARING CAPACITIES ARE NOT EXCEEDED**
- PLEASE REFER TO LOADING INFORMATION SUPPLIED FOR DETAILS