

HIGH PRESSURE STEAM UNIT TO PURIFY SURFACES, EQUIPMENT, ENVIRONMENTS, PUBLIC TRANSPORT INTERIORS, TAXIS, AMBULANCES WITH HYGIENE PRODUCT AT WIDE SPECTRUM

2.0



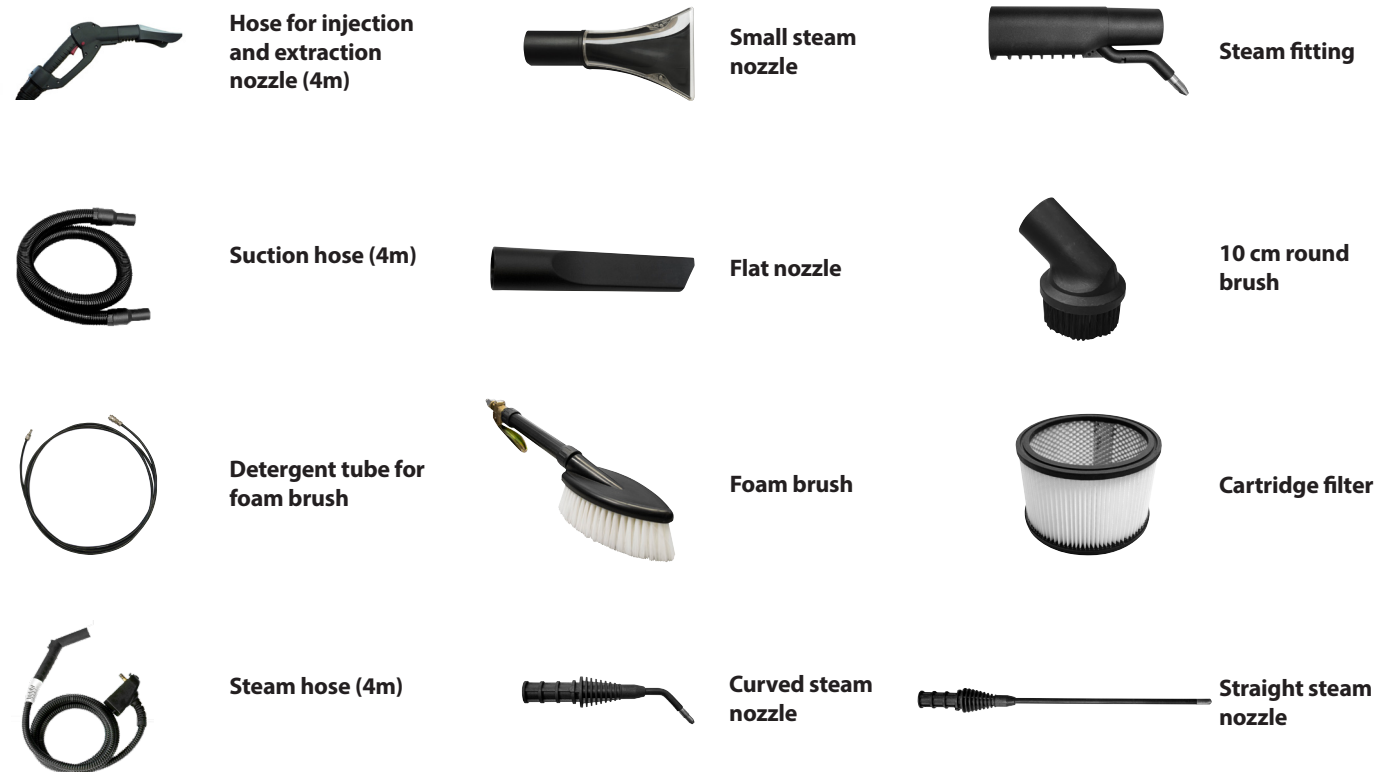
NEW MODEL

4IN1 SYSTEM

9 BAR



STANDARD ACCESSORIES SUPPLIED



Hose for injection and extraction nozzle (4m)



Small steam nozzle



Steam fitting



Suction hose (4m)



Flat nozzle



10 cm round brush



Detergent tube for foam brush



Foam brush



Cartridge filter



Steam hose (4m)



Curved steam nozzle



Straight steam nozzle

NEW BOILER

- **More pressure:** from 7 to 9 Bar
- **New capacity:** total volume of 4800 cc
- **Inspection cap** for maintenance and internal descaling
- **Quick boiler drain** for daily maintenance
- **Patented system** wet steam extraction, directly from the boiler, without using cold water

NEW INTAKE GROUP

- **New upgraded engine** 1300W with better intake by 30%
- **New recovery tank** located in the rear area with easy unloading system

NEW ELECTRONIC CONTROL UNIT

- **It allows you to improve performance** and reduce energy consumption by 25%
- **New controlled water volume recovery system boiler:** allows constant pressure in operation, reduces heating times by increasing working efficiency
- **Counter with programmed service signal**
- **Low voltage cooling** of the electronic board assembly
- **Waterproof protective housing** for electronic parts

NEW STRUCTURE AND DESIGN

- **New structure** composed of tubular steel and stainless steel panels with cooling
- **Structure designed** for on-site maintenance interventions, easily accessible internal parts
- **Facilitated ordinary and extraordinary maintenance**
- **Small size:** possibility of use it even in small areas or passageways (e.g. transport corridors, coaches etc.) even in the presence of low protruding armrests
- **Baskets for objects and brushes**
- **Hose holder and accessory holder**
- **Easy snake tube**
- **Maneuverability and ergonomic handle** which improve inclination angle to facilitate the work of the operator, during vacuuming and cleaning
- **Front compressed air attachment** for Rotorjet use and blowing

Code: A0312

GEYSER FIELDS OF APPLICATION



FOOD & BEVERAGE

Food industry, catering, beverage industry, wineries and wine industry.



HOTELLERIE, COMMUNITY AND HEALTH CARE

Hotels, buildings, sports centres, gyms, wellness centres, schools and communities, hospitals.



INDUSTRY

Industrial plants, public transport, car washes, car dealers.



PROFESSIONAL SOLUTIONS

Car dealers, car washes, body shops and any other place where a source of compressed air is already available.

DRY AND WET STEAM SYSTEM

EXTRACTION SYSTEM

FOAMING SYSTEM

ADJUSTABLE STEAM AND HOT WATER SYSTEM

FIND OUT MORE
WATCH THE VIDEO



CONTACT YOUR LOCAL
DEALER MA-FRA®
OF CONFIDENCE



Ma-Fra S.p.A. a Socio Unico
Via Aquileia 44/46, 20021 Baranzate (MI) - Italia
T. +39 023569981 - info@mafra.it
mafra.com

8 0055531032029

MULTIPURPOSE MACHINE: 1 Cleaning with dry steam 2 Wet steam 3 Foaming detergent 4 Liquid and dust vacuuming

1. NEW DESIGN

> Structure made of tubular painted steel.

Stainless steel panels fixed by handwheels for quick access to internal components without the use of special tools.



Details:
145x80x45 Cm
STAINLESS STEEL

ELONGATED HANDLE

For better maneuverability of the machine and removable without the aid of tools to optimize dimensions during transport or storage

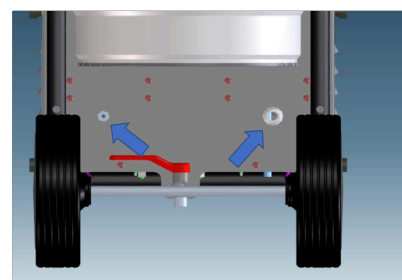


145x80x45 Cm
STAINLESS STEEL

EASY ACCESSIBILITY

Both the power cable and the compressed air connection are now placed to the back

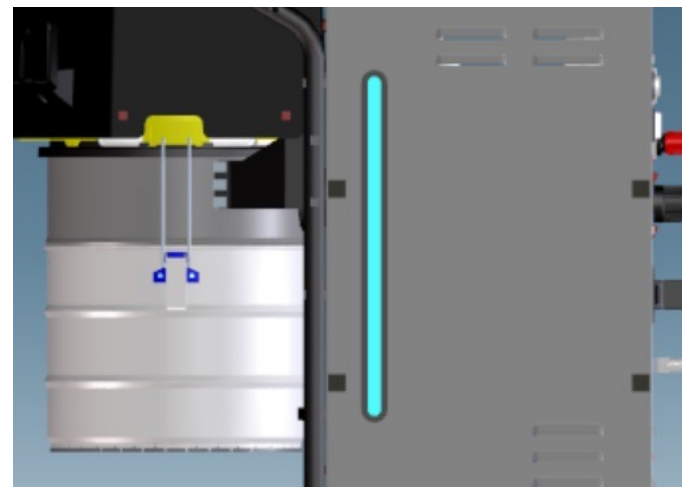
More accessible and protected stainless steel steam discharge tap lever



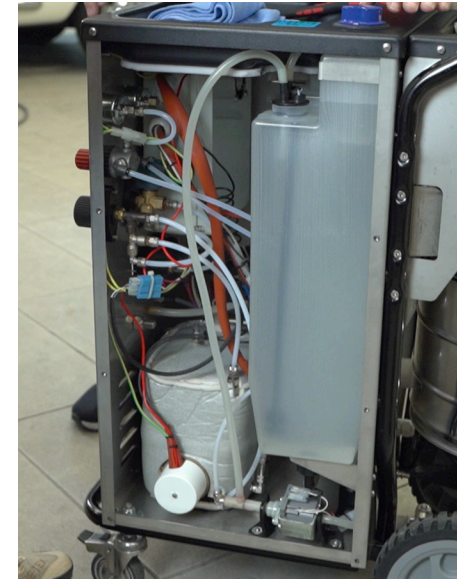
240x90x45 Cm
LINEN



> Front bull-bar for protection against accidental impacts, ideal for transport and lifting operations.



Visualization of the liquid levels inside the tanks



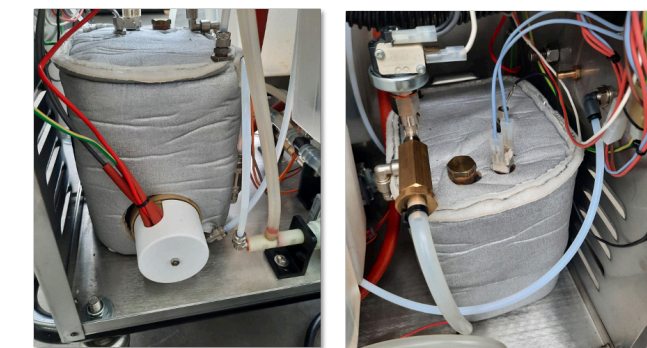
Details:
215x80x45 Cm
COTTON

EASY ACCESS AND INSPECTION

Water pump and detergent pump repositioned. Internal tanks for water 10l + 5l detergent

Integrated minimum level indicators (break-proof)

Large filters directly accessible for maintenance

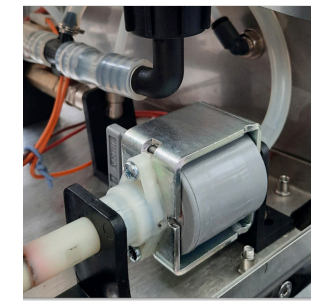


NEW 9 BAR BOILER

New 9 Bar boiler with 3 kW internal heating element and upper cap for cleaning operations.

Resistance contacts protected by insulated cap.

Easily removable boiler by unscrewing 3 M5 nuts under the frame



PUMP

Water pump and detergent pump repositioned for easy access and inspection. Both can be disassembled using a cross screwdriver.



GROUPING ELECTRICAL COMPONENTS

Grouping of all the electrical components inside a protected box

Front control panel with 0/1 industrial switch and hour meter

On the right side, all the hydraulic components, hose layout and optimized lengths are grouped

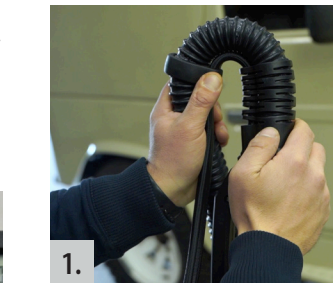


Pivoting wheels with stainless steel support and parking brake.

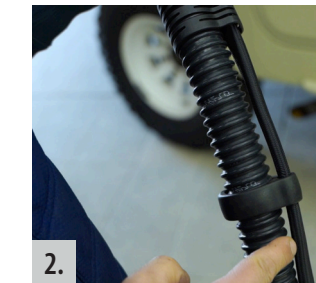
DOUBLE-HOSE FLEX

4 IN 1 9 BAR STEAM GENERATOR

Double-hose flex: flexible suction hose and steamelectric hose connected by clip Professional anatomical handle Suction control via rubber keyboard. Stainless steel seeger on flex connection pin(V1)



1.



2.



3.

1. FLEXIBLE

Improved ferrule to facilitate hose flexibility

2. INCREASED DEPRESSION

Doubled the hot part and the electric part with the suction pipe

3. HANDY HOSE

Can only be used with one hand



New 1300 W vacuum motor. Head protected by soundproof cover. Suction recovery tank in rear position, easily removable by quick release

Pivoting wheels with stainless steel support and parking brake.

In the rear area there are various supports for electric cables and pipes, as well as special compartments for sprayers and other accessories.

FIND OUT MORE WATCH THE VIDEO

