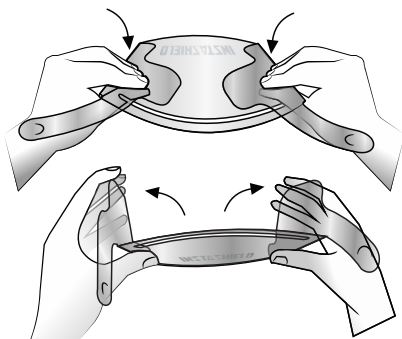


INSTRUCTIONS

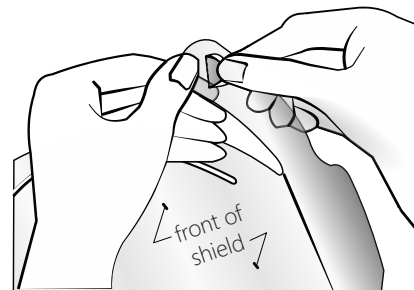


1. Remove plastic strip.



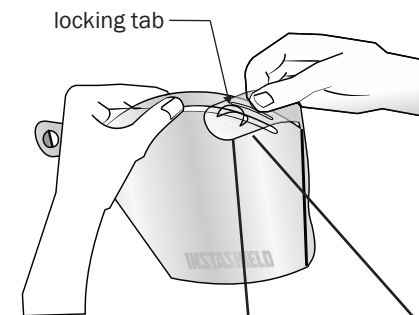
2. Fold sides along the scored lines.

Bend the sides in 180 degrees and then back to 90 degrees.



3. Fold the tabs up.

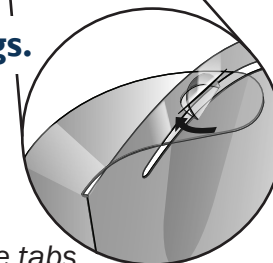
Fold the locking tabs up towards you and pinch to crease.



4. Tuck in wings.

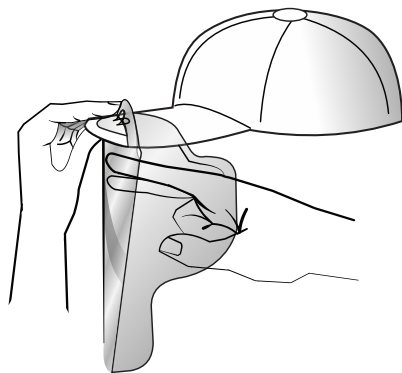
Insert the wings through the large slot.

TIP: For an ultra-secure fit, tuck the tabs into the small slits.



5. Slide InstaShield onto your hat.

Slide your shield onto the bill of your hat until the wings aren't hanging off.



6. Push to lock into place.

While holding onto the bill of the cap, push the face of the shield outwards until it pops into place.



Well done!

You're ready to wear, wash, and repeat!

Note that InstaShield™ is intended for a single user.

Scan this code



or visit

www.instashieldusa.com/faq

for a step-by-step
how to video

★ InstaShield™ ships flat. It can be folded and fitted to your standard curved bill baseball cap.

★ This shield will not work with flat bill style baseball caps.