

What's improved?

ARMANOV

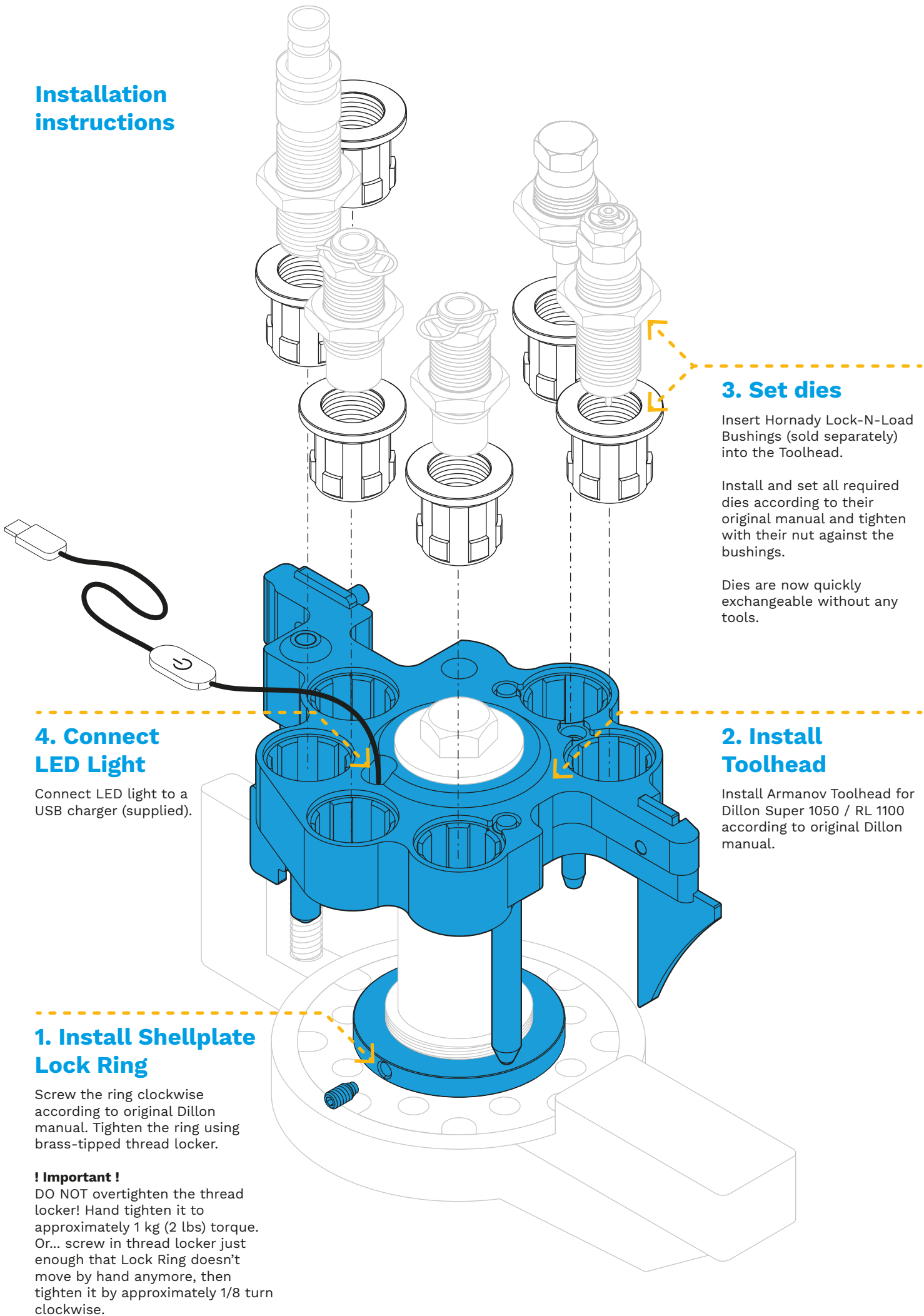
Toolhead for Dillon Super 1050 / RL 1100

Instructions for use



Armanov d.o.o.
 Brezovce 9,
 1236 Trzin, Slovenija
 Tel: +386 30 467 000
www.armanov.com

Installation instructions



3. Set dies

Insert Hornady Lock-N-Load Bushings (sold separately) into the Toolhead.

Install and set all required dies according to their original manual and tighten with their nut against the bushings.

Dies are now quickly exchangeable without any tools.

2. Install Toolhead

Install Armanov Toolhead for Dillon Super 1050 / RL 1100 according to original Dillon manual.

4. Connect LED Light

Connect LED light to a USB charger (supplied).

1. Install Shellplate Lock Ring

Screw the ring clockwise according to original Dillon manual. Tighten the ring using brass-tipped thread locker.

! Important !

DO NOT overtighten the thread locker! Hand tighten it to approximately 1 kg (2 lbs) torque. Or... screw in thread locker just enough that Lock Ring doesn't move by hand anymore, then tighten it by approximately 1/8 turn clockwise.