



# Richmond Frame

For use with the Logic HE, 16" VFC Convector and E-Box™



**Instructions for Use and Installation**  
For use in GB, IE (Great Britain and Republic of Ireland)

# Installation Instructions

Covering frame model numbers:

Model	
Logic HE Coal (Manual & Remote only)	8679
E-Box™	8679
16" VFC Convector	8678

## 1. General

1.1 These instructions are supplementary to, and must be read in conjunction with, the installation instructions supplied with the appliance. Read both thoroughly before installation.

### VFC Convector

**Note: The VFC requires a bracket to be fitted to the appliance before installation.**

Ensure that the commissioning tests are carried out AFTER the fitting of the front.

### Logic HE/ E-Box

Fitting of this decorative front is to be carried out after the appliance has been installed.

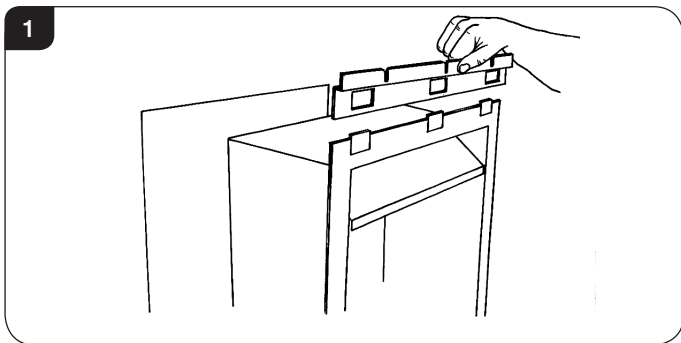
Ensure that the commissioning tests are carried out BEFORE fitting the front.

1.2 Ensure that the supplementary sheet is attached to the installation instructions and leave with the user.

## 2. Fitting for 16" VFC Convector

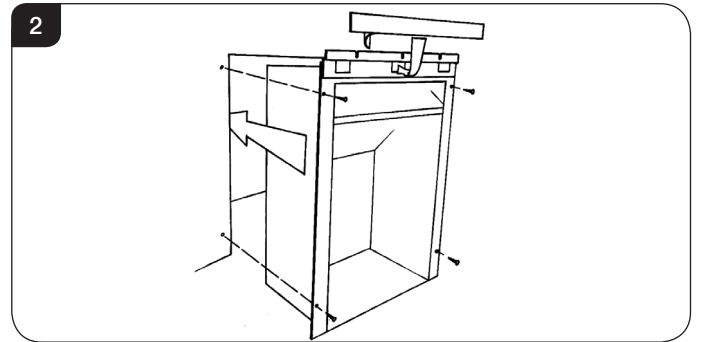
2.1 Position the bracket onto the three lugs on top of the convector - ensure that it engages completely.

2.2 Secure the bracket using the self-adhesive metal tape provided.

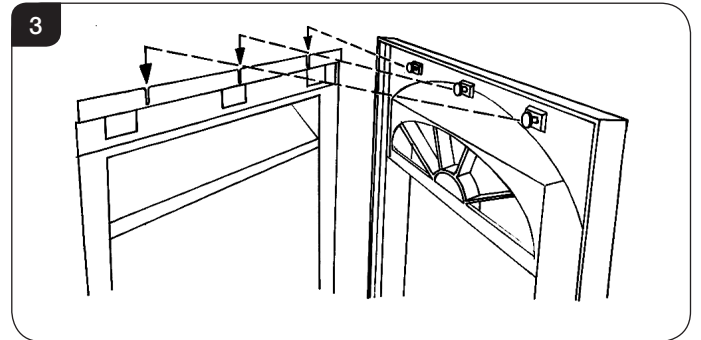


2.3 Push the convector back into position according to the installation instructions provided with the gas appliance.

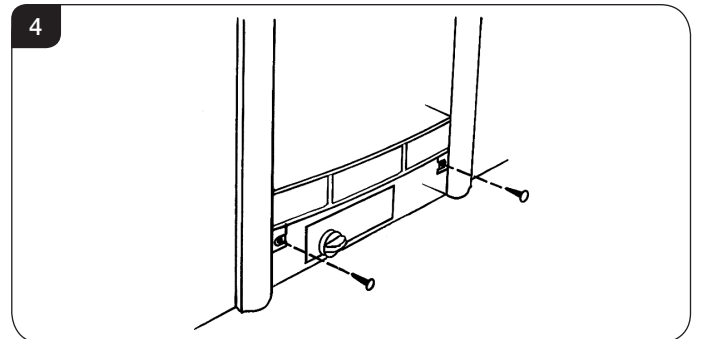
2.4 Secure the convector with the four screws provided with the convector, see Diagram 2.



2.5 Hang the casting onto the bracket - ensure that it engages securely, see Diagram 3.



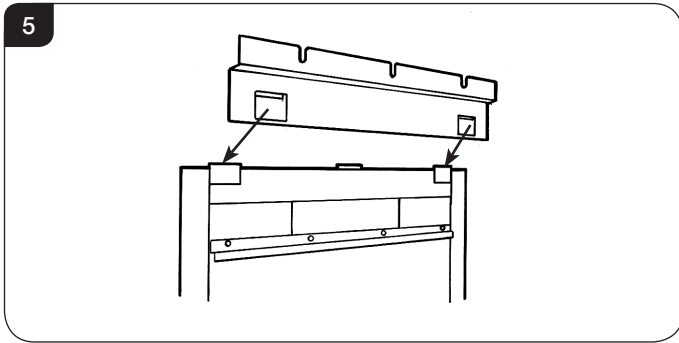
2.6 Secure the castings at the bottom using the two screws provided, see Diagram 4.



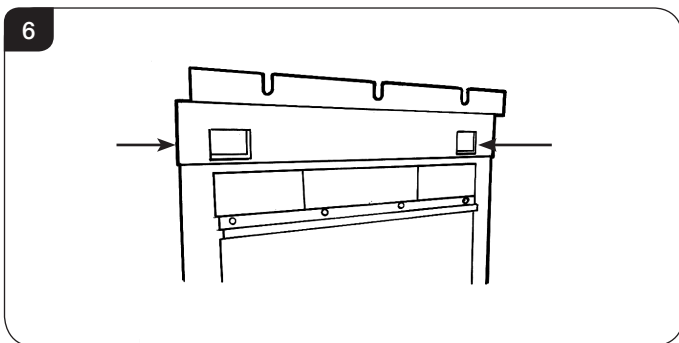
# Installation Instructions/ User Instructions

## 3. Fitting for E-Box™ and Logic HE

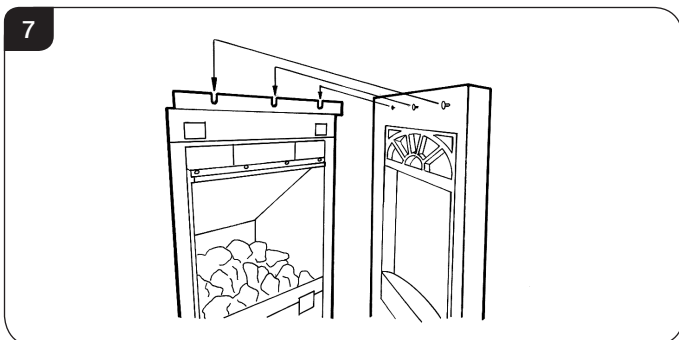
- 3.1 After the appliance has been fitted securely into the fireplace. Position the hanging bracket onto the lugs as shown in Diagram 5.



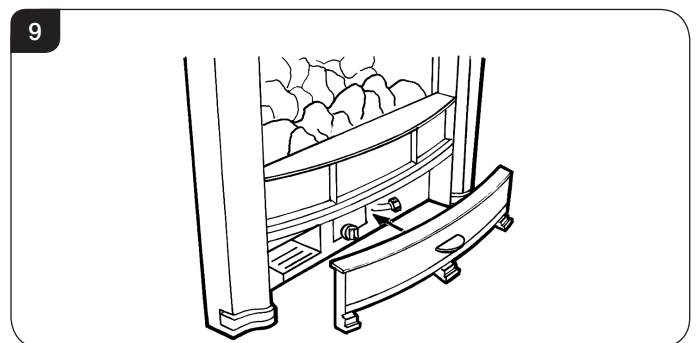
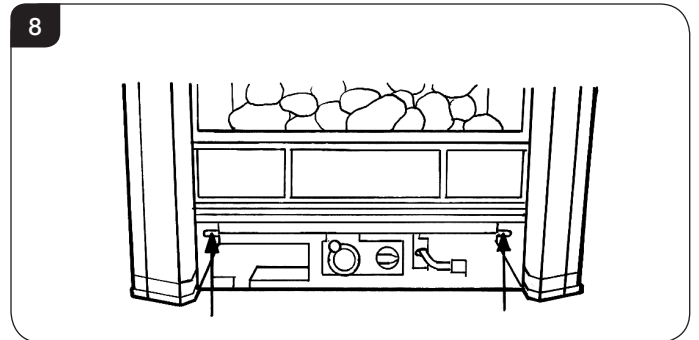
- 3.2 Secure the bracket to the outer edge firebox using the two clips provided, see Diagram 6.



- 3.3 Hang the cast front on the appliance ensuring the three screw heads engage fully behind the bracket, see Diagram 7.



- 3.4 Secure the casting in place using the two screws provided and place the ashpan cover in position, see Diagrams 4 & 5.



## 4. Commissioning

### 16" VFC Convectector

- 4.1 Continue with the commissioning tests, detailed in the Installation Instructions supplied with the appliance.

## 5. Cleaning the Frame

- 5.1 Only clean the frame when it is cold. The painted frame should be cleaned using a damp cloth and buffed with a lint free duster.

**Gazco Limited, Osprey Road, Sowton Industrial Estate, Exeter, Devon, England EX2 7JG**  
**Technical Customer Services: (01392) 261950 Fax: (01392) 261951**  
**E-mail: [technicalservices@gazco.com](mailto:technicalservices@gazco.com)**

A member of the Stovax Group  
E & O E