



# Designio Frame

For use with 16" VFC Convector, Logic Hotbox, Logic Convector,  
Logic HE, E-box™ & E-Studio™



**Instructions for Use and Installation**  
For use in GB, IE (Great Britain and Republic of Ireland)

# Installation Instructions

Covering frame model numbers:

Model	
16" VFC Logic Hotbox & Convector	8251GP/ 8251IR
E-Box™/ E-Studio™ Logic HE Convector (Manual & Remote only)	912-396/ 912-018

## 1. General

- 1.1 These instructions are supplementary to, and must be read in conjunction with, the installation instructions supplied with the appliance. Read both thoroughly before installation.
- 1.2 Fitting of this decorative front is to be carried out after the appliance has been installed.

### Logic Hotbox/ Logic Convector / VFC

Ensure that the commissioning tests are carried out AFTER the fitting of the front.

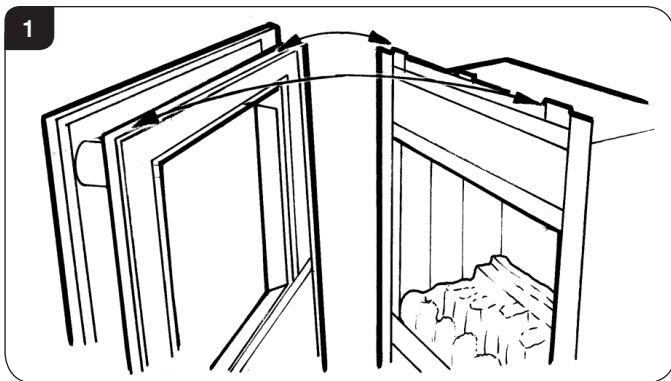
### Logic HE/ E-Box/ E-Studio

Ensure that the commissioning tests are carried out BEFORE fitting the front.

- 1.3 Ensure that these supplementary instructions are attached to the Installation Instructions and leave with the user.

## 2. Fitting

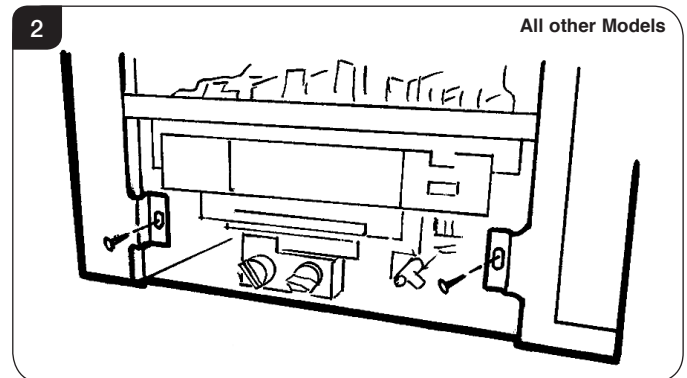
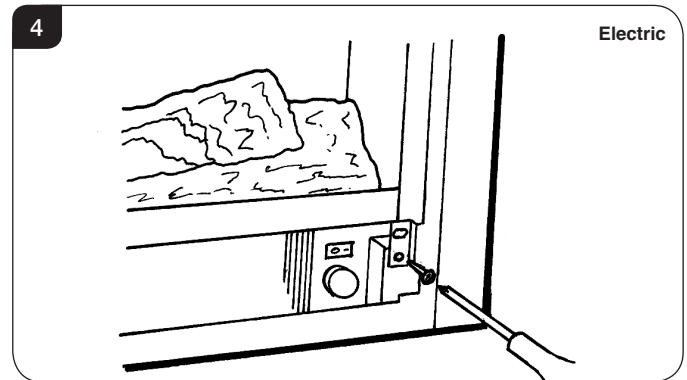
- 2.1 Note the location areas situated at the top of the appliance as these secure the back of the frame to the appliance, see Diagram 1.



- 2.2 Place the back of the frame over the locating areas and push down to ensure rigid fixing.

**Important: ensure all three lugs have engaged, see Diagram 1.**

- 2.3 Open the door and secure the frame at the base using the two screws, see Diagram 2 or 3.

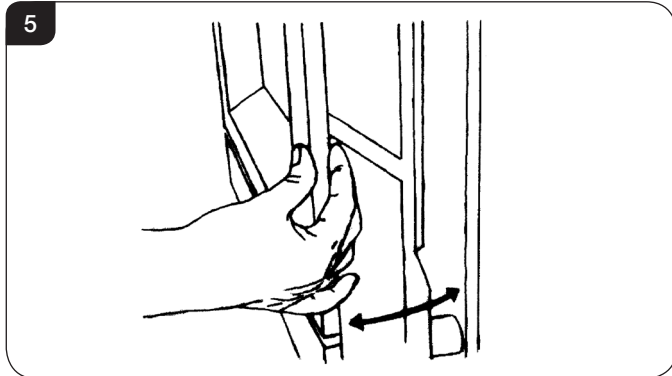


- 2.4 Check the magnet holds the door shut when in the closed position.

# Installation Instructions/ User Instructions

## 3. Opening the Designio Frame

- 3.1 When the frame is fitted, the frame door may be opened by placing your hand at the lower right hand side and pulling forward, see Diagram 8.



## 4. Commissioning

### Logic Hotbox/ Logic Convector / VFC

- 4.1 Continue with the commissioning tests, detailed in the Installation Instructions supplied with the appliance.

## 5. Cleaning the Frame

- 5.1 Only clean the frame when it is cold.
- 5.2 Do not use abrasive cleaners.
- 5.3 Wipe with a damp cloth and buff with a clean, lint-free duster.

## 6. Fixing Kit Components

DESCRIPTION	QUANTITY
Installation Instructions	1
Spire Clip	2
No.8 x 3/4 Black Washer HD Pozi	2

**Gazco Limited, Osprey Road, Sowton Industrial Estate, Exeter, Devon, England EX2 7JG**  
**Technical Customer Services: (01392) 261950 Fax: (01392) 261951**  
**E-mail: [technicalservices@gazco.com](mailto:technicalservices@gazco.com)**

A member of the Stovax Group  
E & O E