

# Clover

# STARRY SUNSET



# BEADING LOOM PROJECT



**MAKE·IT**  
FREE PROJECT

Scan to make this free video  
Pescar el video gratuito en tu video  
Descargar para visualizar el video gratis  
Scann the QR Code  
Der Anschlag der Video-Anleitung scannen

Get the free mobile app at  
http://gettag.mobi

©2012 Clover Beading Loom  
Clover Beading Loom  
Clover Beading Loom  
Clover Beading Loom

CLOVER BEADING LOOM CO., LTD.



# Bead Design 29 / Warps 30

**Step 1: Wind 30 warp threads across loom.**

**Step 2: Weave beads according to the bead placement chart.**

**Step 3: Finish ends of wrap and weft threads.**

## Bead Legend

\*Please refer to the Clover beading loom instructions for basic weaving techniques.

### Starry Sunset

Chart #:A  
A-928  
Purple Lined Amber  
Count:262

Chart #:B  
11-252  
Purple Lined Aqua  
Count:90

Chart #:C  
2700  
Glow-in-theDark  
Count: 148

Chart #:D  
11-2108  
Silver Lined Mauve  
Count:114

Chart #:E  
11-1202  
Lavender Marbled Opaque  
Count:66

Chart #:F  
11-1200  
Light Mauve Marbled Opaque  
Count:134

Chart #:G  
11-477  
Light Lavender AB  
Count:36

Chart #:H  
11-126  
Opaque Luster Baby Pink  
Count:48

Chart #:I  
11-904  
Squash Ceylon Pearl  
Count:54

Chart #:J  
11-129  
Hyacinth Opaque Luster  
Count:74

Chart #:K  
11-1208  
Light Seafoam Marbled Opaque  
Count:61

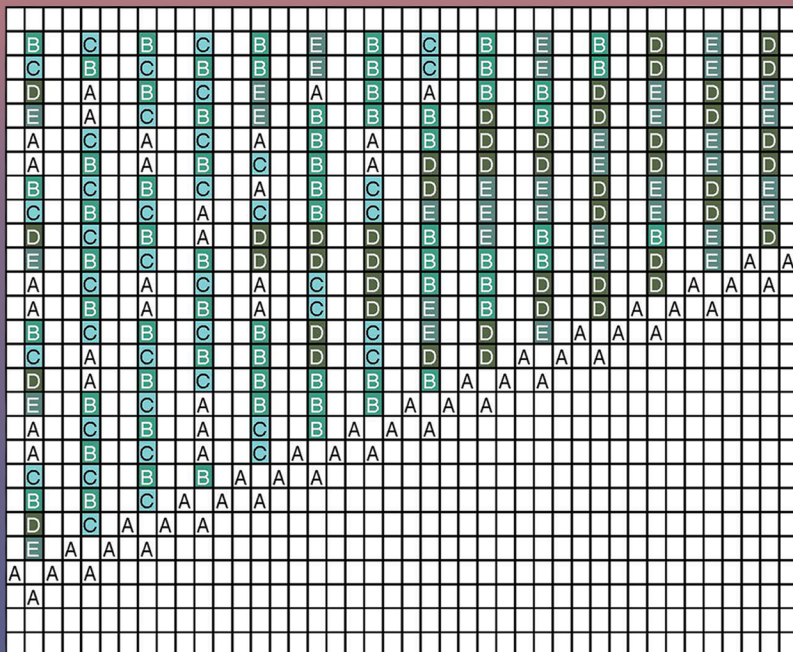
Chart #:L  
11-1206  
Aqua Marbled Opaque  
Count:105

Chart #:M  
11-995  
Aqua Bronze Lined AB  
Count:58

Chart #:N  
11-920  
Light Emerald Ceylon Pearl  
Count:87

Chart #:O  
11-919  
Light Aqua Blue Ceylon Pearl  
Count:26

# Necklace Fringe Chart



## Bead Legend

Chart #:A

2700

Glow-in-the-dark

Count:69

Chart #:B

11-920

Light Emerald Ceylon Pearl

Count:66

Chart #:C

11-919

Light Aqua Blue Ceylon Pearl

Count:40

Chart #:D

11-995

Aqua Bronze Lined AB

Count:47

Chart #:E

11-1206

Aqua Marbled Opaque

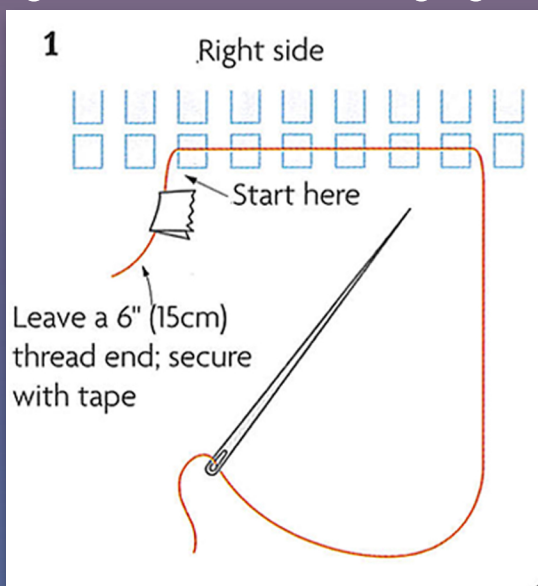
Count:37

# Attaching Fringe to a straight edge

Step

1

Thread the needle through the first row of beads where the fringe will be added, bringing it out at the right edge. Leave a 6" (15cm) tail, and secure it with tape.



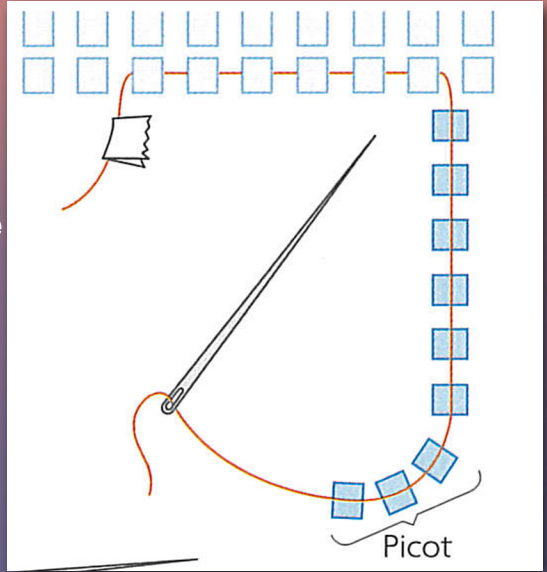
Step

2

Following the project fringe chart, pick up the beads for the fringe. You will be working right to left on the chart. when you reach the longest strand (the middle) repeat the design in reverse.

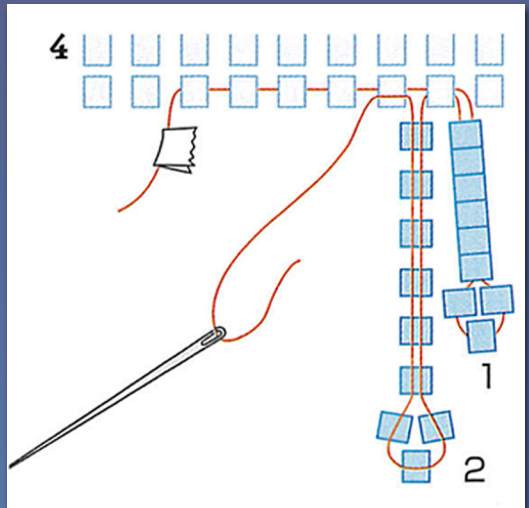
# Step 3

To make the picot pass the needle back through the fringe beads starting with the fourth bead from the bottom.



# Step 4

Make the remaining fringe strands by repeating steps 2 & 3





Free project sheets available for download.

To view our entire collection visit  
[www.clover-usa.com](http://www.clover-usa.com)



CT0111



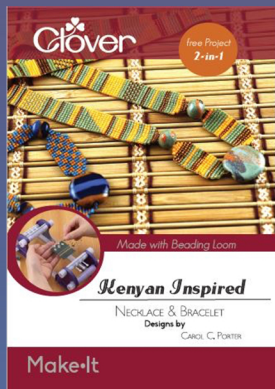
CT0140



CT0135



CT0126



CT0127

1441 S Carlos Ave, Ontario, CA 91761  
[www.clover-usa.com](http://www.clover-usa.com) Toll: 800.233.1703 Fax: 909.218.2161



cloverusa



clover needlecraft



@cloverusa



cloverusa



cloverusa

CT0151