

AISLE / PEW HANGER (cont.)

For Large Turquoise Flower:

1. From the turquoise satin cut 18 petals using the large (5") template.
2. String petals, make flower and attach stem.

For Extra Large White Flower:

1. From white brocade cut 7 petals using the extra large (6") template.
2. From the white glitter satin cut 7 petals using the large (5") template.
3. String the petals alternating 1 brocade with one glitter satin.
4. Insert one pearl tipped party favor tie folded in half at the center of the flower hooking over the thread. Attach stem.

For Large White Flower:

1. From white satin cut 10 petals using the large (5") template.
2. String petals and add one pearl tipped party favor tie to the center of the flower.
3. Attach stem.

For Large White Flower:

1. From poly shantung cut 10 petals using the large (5") template.
2. String petals and add one pearl tipped party favor tie to the center of the flower.
3. Attach stem.

For Medium Turquoise Flower:

1. From glitter net cut 10 petals using the medium (4") template.
2. From organza cut 10 petals using the medium (4") template.
3. String the petals alternating on with one organza.
4. Attach stem.

Assembly:

1. Use the Wisteria Spray as the base and wire each addition in the following order to the center of the Spray: Feather and Pearl sprays to each side, large satin turquoise flower, extra large white flower, large white satin flower, large poly shantung flower, medium turquoise flower.
2. Gather all wire ends, trim them even; then make a hook.

Attaching Stem Wire to Flowers

STEP 1

Bring one end of wire 5" and place in the center of the flower and between a petal.



1

STEP 2

Use pliers and clamp the two wires together; then twist the short wire around the long wire.



2

STEP 3

With 10" of lighter weight wire (22 gauge) fold it in half and insert the wire same as the long stem through the center and include a petal. Hold them together and twist around the heavier wire, pulling tight. Stitch around flower base and include the wire, this will assist in holding the flower upright.



3a



3b

STEP 4

Wrap wire with floral tape.



4

STEP 5

Open petals of the fill flower to make it full and round.



5



The Reception

CENTERPIECE

Purchase
3 assorted clear glass vases
2 bags 12oz. each of glass gems clear
"Decorative Accents"

For Extra Large Turquoise Flower:

1. From the turquoise organza cut 4 petals using the medium (4") template.
2. From the glitter net cut 8 petals using the extra large (6") template.
3. String the petals alternating 1 organza with 1 glitter net.
4. Use a hole-punch and punch two holes in the upper left-hand corner of the card.
5. Cut approximately 7 1/2" of ribbon and insert it through the holes; then make a tie.
6. Glue the flower over the center of the ribbon knot.
7. Write or have printed the guest's name.

For the 2 Large Turquoise Flowers:

Follow the same steps as above using the large (5") template. Make 2.

Assembly:

One stem per vase add clear glass gems.

PLACARD

Purchase
A rent card size of your choice.
We used 4 1/2" x 5 1/2".
3/8" wide double-sided satin turquoise ribbon. (By the spool 10yd)



NEW

Flower Frill TEMPLATES

Easy Flip and Fold Flower Maker!

Embellish your jewelry, wardrobe and home accessories with Flower Frills! Each package contains 2 templates per size (total of 4).



ART. NO. 8460 SMALL & MEDIUM
ART. NO. 8461 LARGE & EXTRA LARGE

DW CLOVER NEEDLECRAFT, INC.

Ontario, CA 91761 U.S.A. www.dwclover-usa.com
TOLL-FREE: (800) 233-1703 FAX: (909) 218-2161



CTD0088
JAN 2011
51222100670 8



Flower Frill Wedding

Bring romance and style to a wedding with easy hand-made flower frills



FREE PROJECTS

Bride's Fascinator
Shoe Clips
Flower Girl's Headband
Flower Basket
Ring Pillow
Pew Hanger
Centerpieces
Placards



more project ideas available at www.dwclover-usa.com

Flower Frill Wedding

By Carol C. Porter



Quick and easy, you'll have your wedding decorations just the way you want. This project sheet will get you started on some of the most critical wedding pieces, but there's always so much more...let your creativity be your guide.

General Information:

For all of the items in this project sheet the following supplies were used in every category with yardage left over. If you are planning for a wedding your yardage amounts will change especially where the ceremony and reception are concerned.

Wedding Flower Frill Yardage:

Turquoise: 1yd Satin 1 1/2 yd Organza
 White: 1yd Poly Shantung 1 yd Brocade
 1yd Glitter Net 1/2 yd Satin
 1yd Organza 1/2 yd Glitter Satin

Supplies:

Needle & Thread & Scissors
 "Quick" Yo-Yo Maker Small ART: NO. 8700
 Flower Frill Templates Small & Medium ART: NO. 8460
 Flower Frill Templates Large & Extra Large ART: NO. 8461

The Bride

HAIR PIECE / FASCINATOR

Purchase 1 white feathered hair clip

For Large Flower:

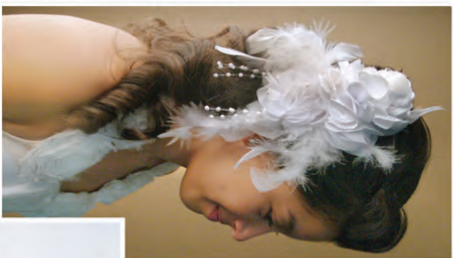
1. From white organza cut 4 petals using the large (5") template.
2. From white brocade cut 4 petals using the medium (4") template.
3. From white glitter satin cut 4 petals using the medium (4") template.
4. From the white satin cut 2 petals using the small (3") template.
5. String petals in this order: 2 organza, 2 brocade, 2 glitter satin, 2 satin, 2 glitter satin, 2 brocade, 2 organza.
6. Fold 3 stamens in half and add to the center of the flower by hooking them over the thread.

For Small Flower:

1. From white glitter satin cut 4 petals using the small (3") template.
2. From the white organza cut 4 petals using the small (3") template.
3. String the petals in this order: 2 glitter satin, 4 organza, 2 glitter satin.
4. Fold 3 opalescent glitter stamens in half and add to the center of the flower by hooking them over the thread.

Assembly:

1. Fold one pearl tipped favor tie (comes in a package of 8) in half and place just below the large flower.
2. Glue large flower and favor tie in place toward the top of the clip.
3. Glue the smaller flower nestled right up to the large flower.



SHOE CLIPS

1. From white organza cut 8 petals using the large (5") template.
2. From white brocade cut 8 petals using the medium (4") template.
3. From the white satin cut 4 petals using the small (3") template.
4. String the petals in this order: 2 organza, 2 brocade, 2 satin, 2 brocade, 2 organza for each flower. Make 2.
5. Fold 4 opalescent glitter stamens in half and add to the center of the flower by hooking them over the thread for both flowers.
6. Take 2 white feather and dip the ends into a spot of glue and tuck them into each flower.
7. Make a yo-yo back base and sew or glue to the back.
8. Glue clips to the back base for each shoe clip.

The Flower Girl

HEADBAND

Purchase white satin covered headband

1. From the turquoise glitter net cut 24 petals using the small (3") template.
2. From the white organza cut 24 petals using the small (3") template.
3. String the petals alternately using 3 turquoise petals, then 3 white petals.
4. Instead of tying the petals off in a circle as you would for a flower, layout and pin the petals over the arc of the headband. Begin 2 1/2" up from the end of the headband and stop 2 1/2" before the opposite end.
5. Sew the tips of the petals to the headband.



FLOWER BASKET

Purchase a white satin flower basket

1. From white poly shantung cut 48 petals using the small (3") template.
 2. Make 6 flower frills with 8 petals each flower.
 3. Glue one flower on each side and two on the front and basket back.
- Note: Skip the rose petals and make your own "fill" petals. "From leftover turquoise fabric, tie 3 petals together from the small (3") template.

SHOE CLIPS

1. From turquoise organza cut 8 petals using the medium (4") template.
2. From the turquoise glitter net cut 12 petals using the medium (4") template
3. From the turquoise satin cut 6 petals using the small (3") template.
4. String the petals in this order: 2 organza, 3 glitter net, 3 satin, 3 glitter net, and 2 organza for each flower. Make 2
5. Make a yo-yo for the back base and sew or glue to the back of the flower.
6. Glue clips to the bases.



The Ring Bearer

RING PILLOW

Purchase a Ring Pillow

1. Add turquoise ribbon through the pillow center and stitch in place.
2. Add white ribbon for the rings.
3. From white satin cut 10 petals using the small (3") template.
4. Sew or glue flower in pillow center.
5. Tie rings into the ribbon.

BOUTONNIERE

1. From turquoise satin cut 8 petals using the small (3") template.
2. Add 3 white pearl stamens.
3. Make a back base using a yo-yo. Sew or glue to the backside of the flower tucking in the leaf.
4. Glue one pin back to the back base.



The Bridesmaids

We didn't forget about the bridesmaids...so here are some additional ideas. Shoe Clips, Hairpieces/Fascinators, Flower Frill Dress Sashes, and Boutonnies. By now you will have mastered the Flower Frill and these items will be a snap!

The Ceremony

Here is where one could get very creative. We are giving instructions for the aisle/pew hanger, however, using the pieces in this bouquet as an example you could also make altar bouquets or an altar centerpiece adding candles.

AISLE / PEW HANGER

Purchase

- 1 33" Wisteria Spray x 5 w/in "Silk Vision"
- 2 Sprays of Feathers and Pearls "Touch of Nature"
- 1 1/2" wide wired novelty ribbon sold by the spool (9ft)
- Stem Wire 16 & 22 gauge & Floral Tape

Note: All of these flowers have wire stems attached. Please follow the instructions and illustrations for "Attaching Stem Wire to Flowers". (see next page)

continued on next page

