

CREATE AND EMBELLISH WITH CLOVER'S TASSEL MAKERS



Art. No 9941



Art. No 9940



Art. No
9942

Designed by Alicia Carr

The Clover logo features a stylized green clover leaf above the word "Clover" in a white, serif font.

Make·It
English • Spanish

PILLOW CASE

SUPPLIES USED:

- 1 Tassel Maker (LG) Art. No 9941
- 1 Needle Threader Art. No 8810
- 1 Amour Crochet Hook B Art. No 1040/B
- 1 Handy Thread Twister Art. No 9942
- 1 Pillow Case
- 3 Lion Brand Yarns' Bonbons
- Beads by Jesse James
- Scissors
- Kreinik Thread



STEP 1:

Wind yarn 30 times around Tassel Maker for each tassel (follow basic instructions included in package).

Tie Kreinik Thread around the neck of tassel to secure.

*Use same thread for cord



Stuff pillow and enjoy!

STEP 2:

Thread beads onto cord with Needle Threader Art. No 8810



STEP 3:

Use Amour Crochet Hook to attach tassel through the corner of the pillow and tie a knot on the inside to secure.

*Repeat on all 4 corners





SUPPLIES USED:

- 1 Tassel Maker (SM) Art. No 9940
- 1 Handy Thread Twister Art. No 9942
- 1 Amour Steel Crochet Hook Art. No 1222
- 1 Scarf
- Wonderfill Eleganza Thread
- Kreinik Thread
- Scissors

STEP 1:

Wind Wonderfill Eleganza Thread 50 times around Tassel Maker (follow basic instructions included in package).

Tie Kreinik Thread around the neck of tassel to secure.

*Use same thread for cord

STEP 2:

Use Amour Steel Crochet Hook to crochet single stitch border around the edge of the scarf with Wonderfill Eleganza Thread



STEP 3:

Tie tassels along crocheted border.

*This model has 5 tassels on both ends.

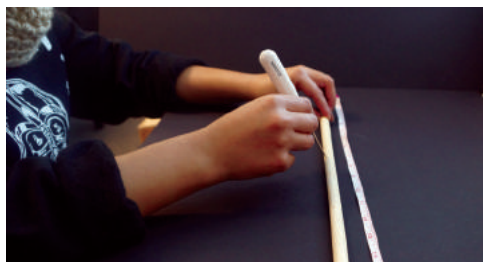
SUPPLIES USED:

- 1 Dowel (15" long)
- Ribbon (3/8" recommended)
- Fabric Glue
- Scissors
- Beads by Jesse James
- Kreinik Thread
- 1 Tassel Maker (LG) Art. No 9941
- 1 Needle Threader Art. No 8810
- 1 Handy Thread Twister Art. No 9942
- 1 Darning Needle Art. No 3144 or 3160
- Awl Art. No 485/W



STEP 1:

Pierce 6 holes on dowel, 2" apart using Awl



STEP 2:

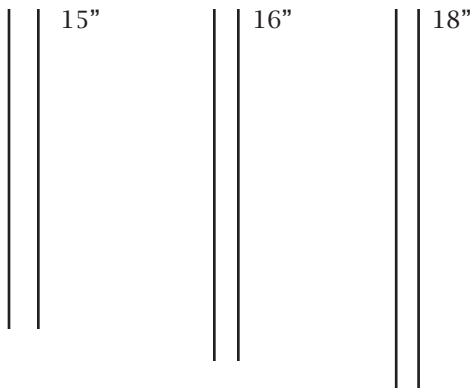
Make 6 tassels.
(follow basic instructions included in package)



STEP 3:

Make 6 cords using Handy Thread Twister:

- 2 each-15" for 12" finish,
- 2 each 16" for 13" finish,
- 2 each 18" for 15" finish.



STEP 4:

Use latch hook needle to insert cord through tassel and knot.

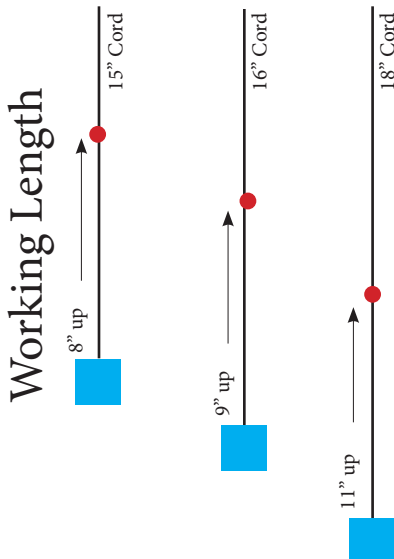
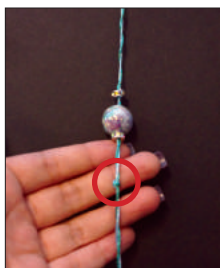


STEP 5:

Measure 8" up from top of tassel and tie a knot, for bead's drop point (this measurement is for first cord, see diagram for other measurements).

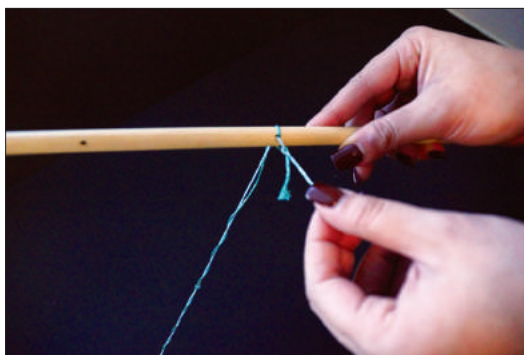
STEP 6:

Use latch hook needle to drop beads onto knot.



STEP 7:

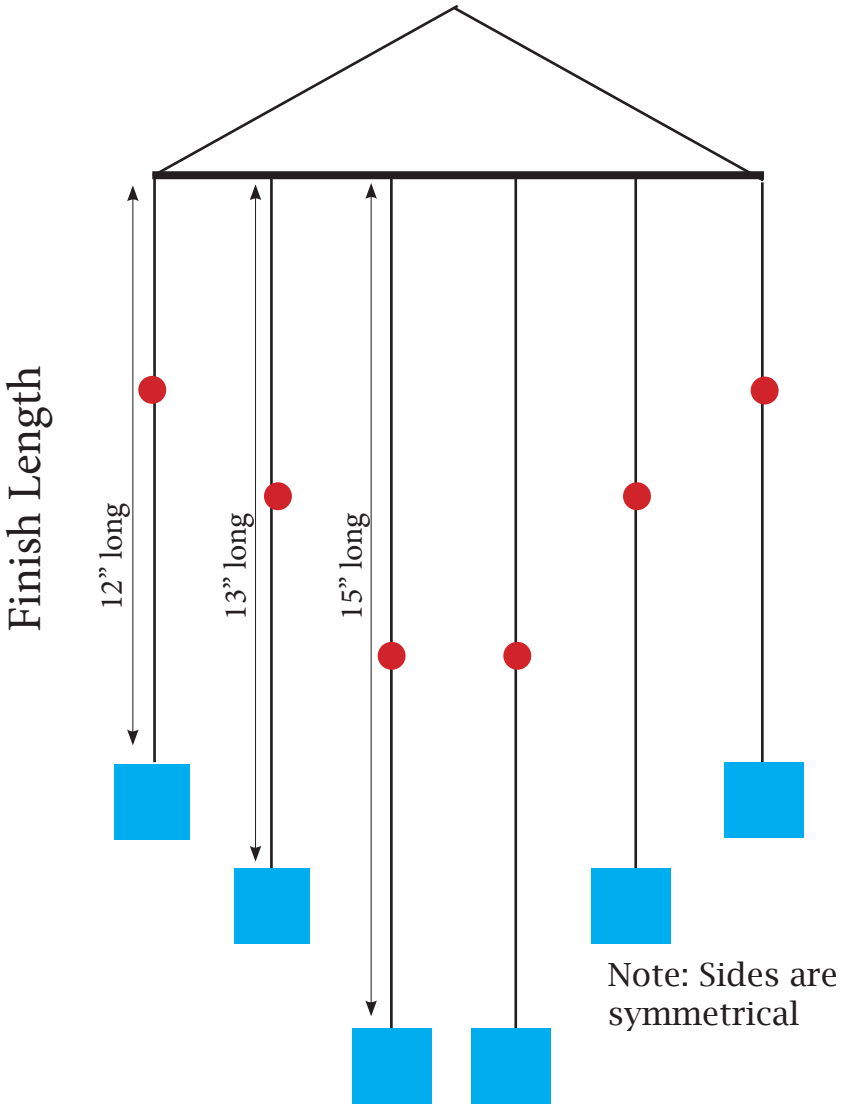
Push cord through hole in dowel. Tie cord on dowel and trim excess.



WALL ART CONTINUED...

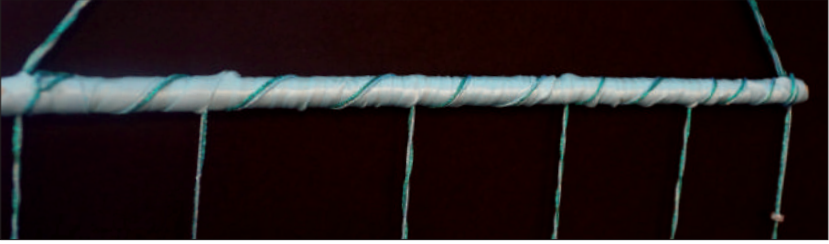
STEP 8:

Repeat 5 more times according to finish length of each cord (see diagram below).



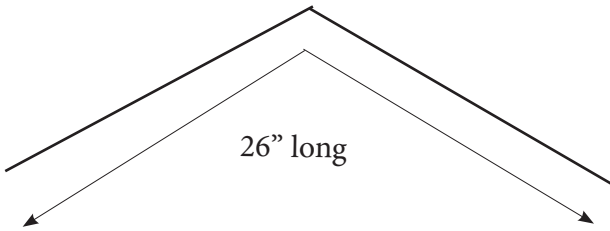
STEP 9:

Spread glue on dowel and cover with ribbon. Wrap twisted Kreinik Thread around dowel (over ribbon) for a finished look.



STEP 10:

Use Handy Thread Twister to make a 26" cord with Kreinik Thread. Tie to each end of the dowel for hanger.



Finally, hang on any wall or window and admire your beautiful creation.



CONNECT WITH US

Stay Updated!



Get educated with instructor Steve Butler on all Clover Tools, what you can do and why you need to add them to your collection.



Check out our travels to exclusive tradeshows and events. Share projects and tips with us.



Watch our channel for educational videos on using our products and for special Clover guests. Experience the Clover difference.



Share tips and hashtag us as #CloverUSA, #CloverNeedlecraft and #CloverFan for exclusive offers. We retreat, respond to your comments and love to read what you have to say.



See what our favorite projects are and DIY recommendations. As well as staying updated on latest trends.



Follow our blog to keep up with the latest Clover news. Here you can find project sheets, new product info and so much more.



See the latest projects our Clover designers are working on and let Clover inspire you. We love showing what our #CloverFan's are working on. Tag us and we'll repost!



1441 S Carlos Ave, Ontario, CA 91761

www.clover-usa.com Toll: 800.233.1703 Fax: 909.218.2161

Connect with Us



CT0146