

Clover

free Project
2-in-1



Made with Beading Loom

Kenyan Inspired

NECKLACE & BRACELET

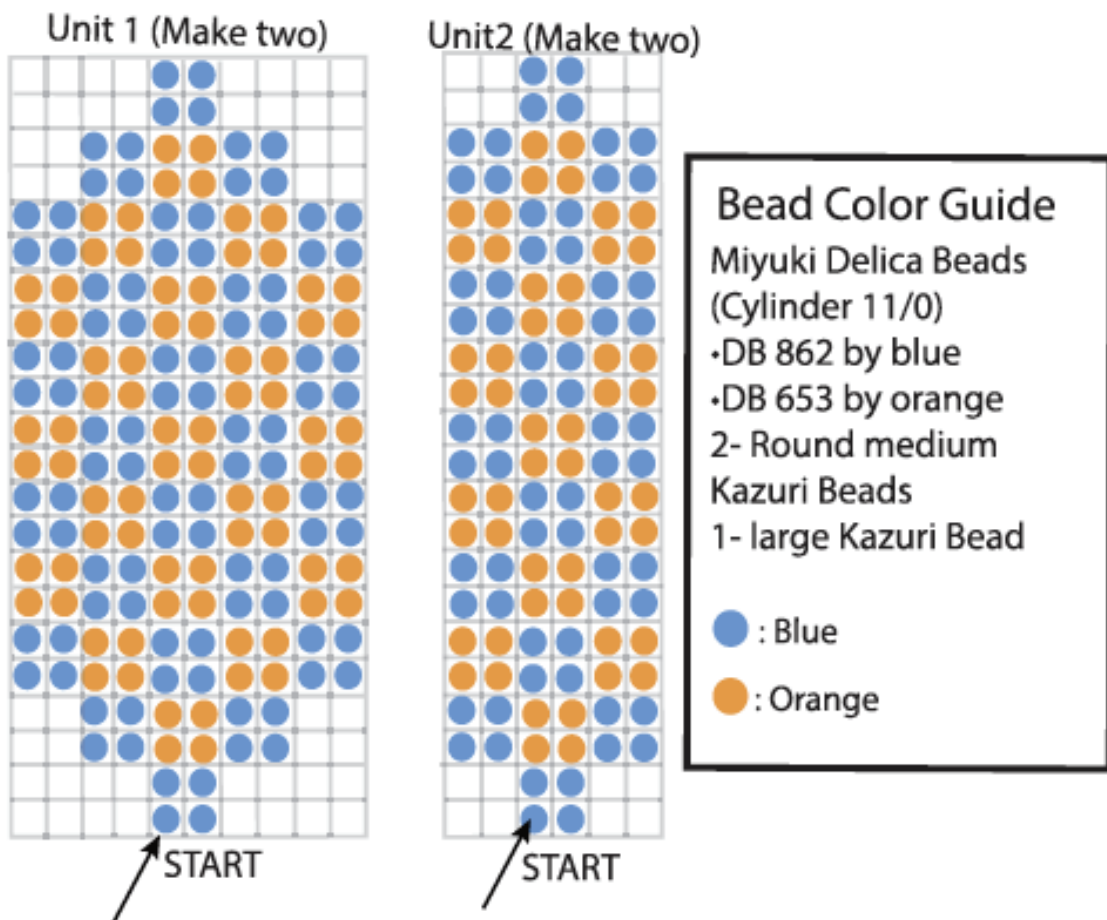
Designs by

CAROL C. PORTER

Make•It



"I found these Kazuri beads and was impressed by the colorations...they set the color theme for the weavings." - CAROL C. PORTER



Bracelet Supplies:

- Clover's Bead Loom Art No. 9910
- Clover's Beading Thread (Brown Art. No. 9914)
- Miyuki Delica Beads (Cylinder 11/0)
- DB 862
- DB 653
- 2- Round medium Kazuri Beads
- 1- large Kazuri Bead
- 2- Jump rings
- 2- Clam shell bead tips
- 1- Bracelet closure
- Round nose pliers

Important!

When you pass the eye of the needle through the beads, always bring it **OVER** the warp threads.

Technique:

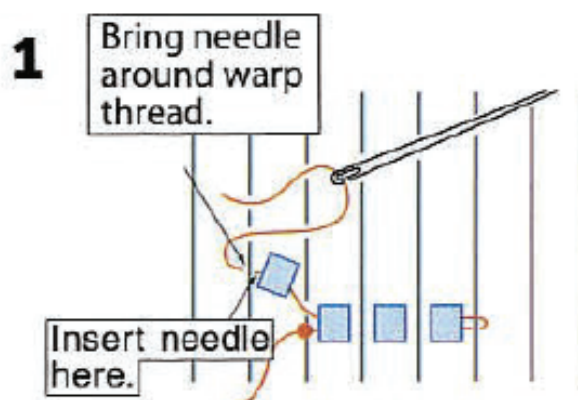
- Continuous Warp
- Decreasing/Increasing
- Unit 1 Beads: 10/Warp: 11
- Unit 2 Beads: 6/Warp: 7

Loom Set Up-

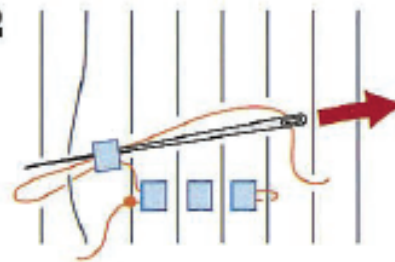
- Set up frame with approximately 2.5" between Warp Guide Beams
- Set Warp Guide Beams with groove set (a) on top.
- Set 1 peg on each end of the Warp Guide Beams
- For unit 1 warp using Method 1: Continuous warp using pegs. Warp loom with 11 threads using brown thread.
- See package instructions for step by step warping.
- Weave design following the bead placement chart. Tie weft thread onto warp thread #5 and begin.

Increasing

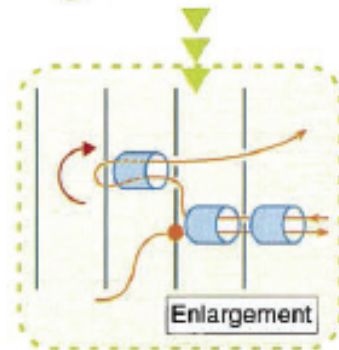
1 Bring the threaded needle **UNDER** the warp threads. Pick up the number of beads needed for the increase. For example, if you plan to increase the row by 1 bead at each end, pick up 1 bead. Press the increase bead(s) against the underside of the warp threads, positioning it between the threads, and bring the needle out as shown.



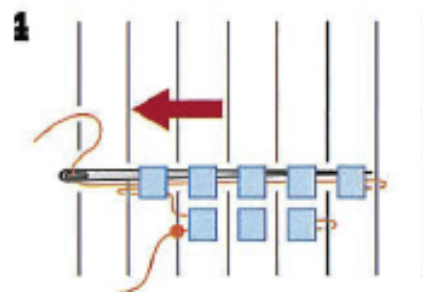
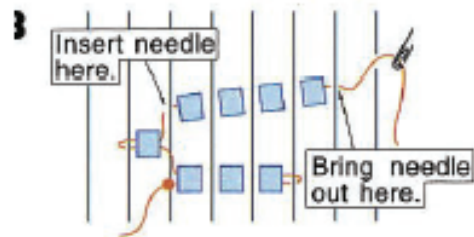
2 Pass the needle through the increase bead(s), eye first. Make sure to pass the needle OVER the warp threads.



3 Insert the needle under the warp threads, pick up the remaining beads needed to complete the row, and position them between the warp threads.



4 Working in the opposite direction, pass the needle, eye first, through all the beads in the row, including the increase bead(s). Repeat these steps as necessary for your project, following the Bead Placement Chart.



Decreasing

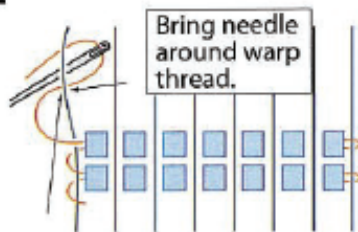
1 After completing the row before the decrease, catch the warp thread at the left edge with the needle.

2 Pass the needle through the last bead in the row before the decrease, eye first.

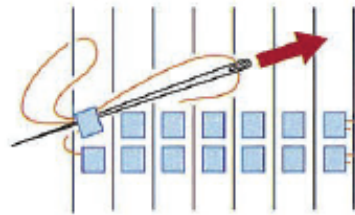
3 Bring the needle underneath the warp threads, and pass it through the beads of the decrease row. Press the beads up between the warp threads.

4 Pass the needle back through the beads of the decrease row, eye first. Repeat these steps as necessary for your project, following the Bead Placement Chart.

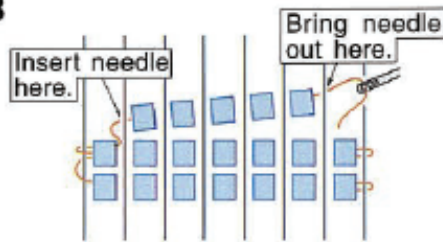
1



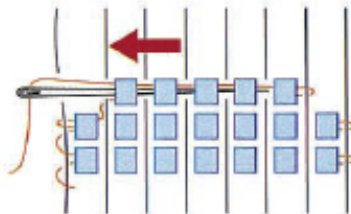
2



3



4



Once unit 1 is complete, remove from loom and work in weft threads. Follow same steps to create unit 2.

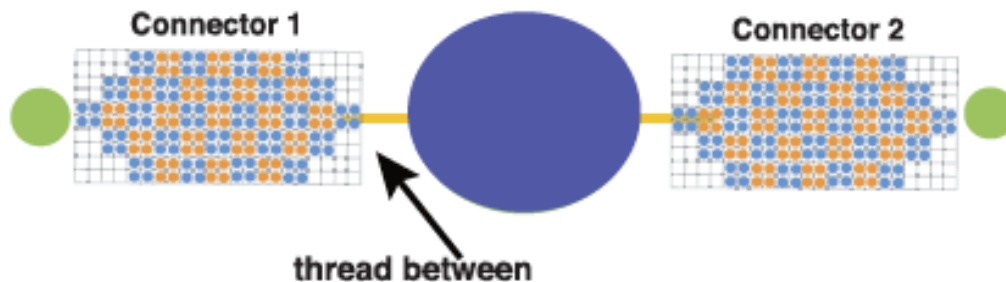
•Weave design following the bead placement chart.
Tie weft thread onto warp thread #3 and begin.

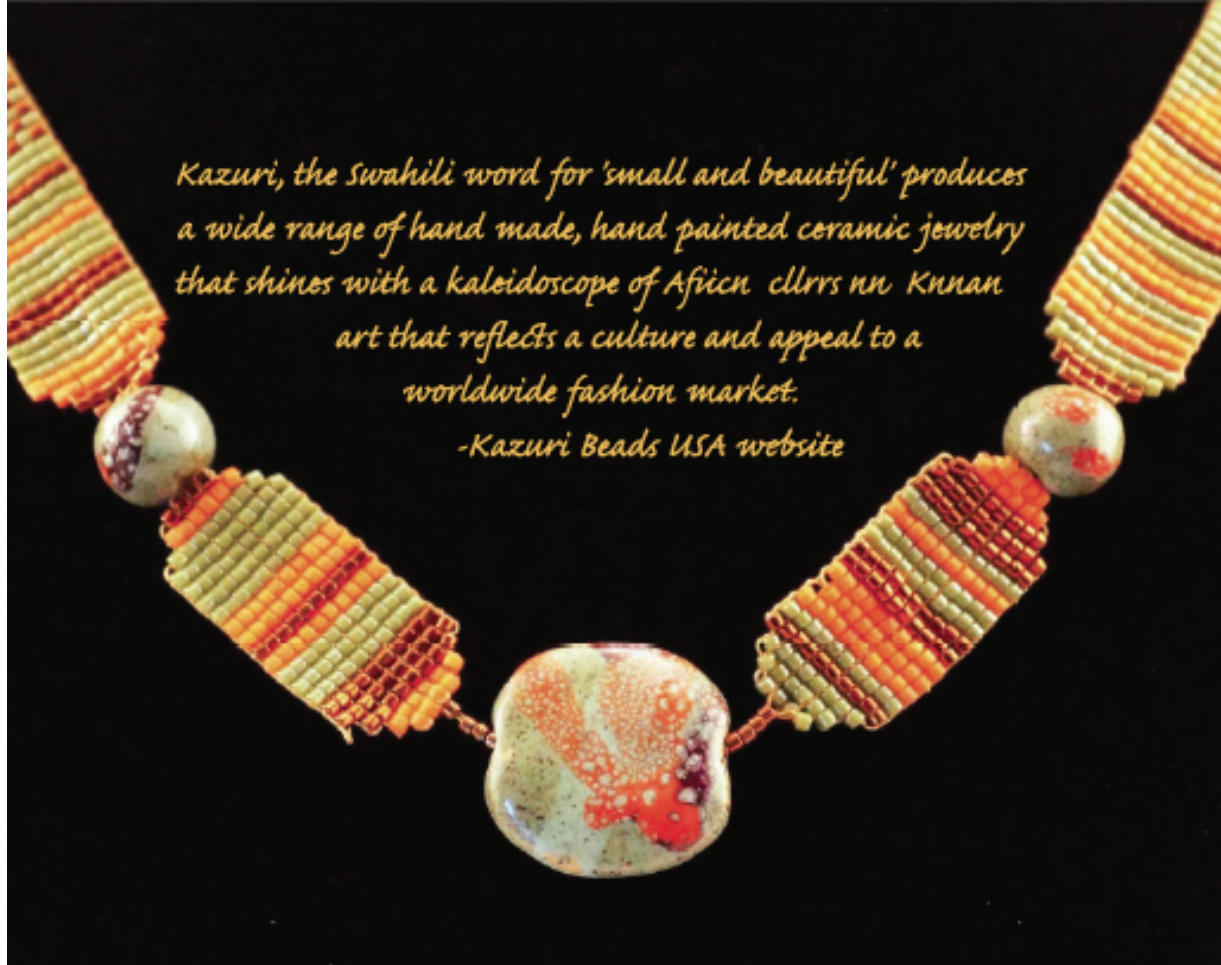
NOTE: The length of the bracelet can be adjusted by adding or subtracting the number of rows in unit 2**

Finishing:

1. Join unit pieces to medium and large Kazuri Beads. Run a needle and thread through several rows of beads before the end. From the end pass the needle and thread through the medium bead and continue running the thread through several rows; reverse and go back through the rows in the opposite direction, go back through the med. bead and reverse through the rows to the beginning thread...clip thread ends.

2. Attach two bead tips, one on each end; then attach the





Kazuri, the Swahili word for 'small and beautiful' produces a wide range of hand made, hand painted ceramic jewelry that shines with a kaleidoscope of African colors and Knnan art that reflects a culture and appeal to a worldwide fashion market.

-Kazuri Beads USA website

Necklace

Supplies:

Clover's Bead Loom Art No. 9910

Clover's Beading Thread (Beige Art. No. 9913)

Miyuki Delica Beads (Cylinder 11/0)

•DB 263

•DB 0461 Galvanized

•DB 1593

2- Round medium Kazuri Beads

1- large Kazuri Bead

Technique:

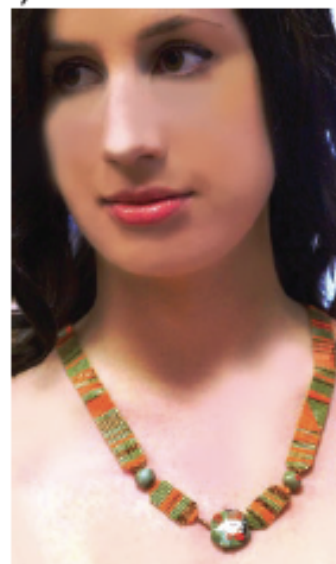
Multiple Warp

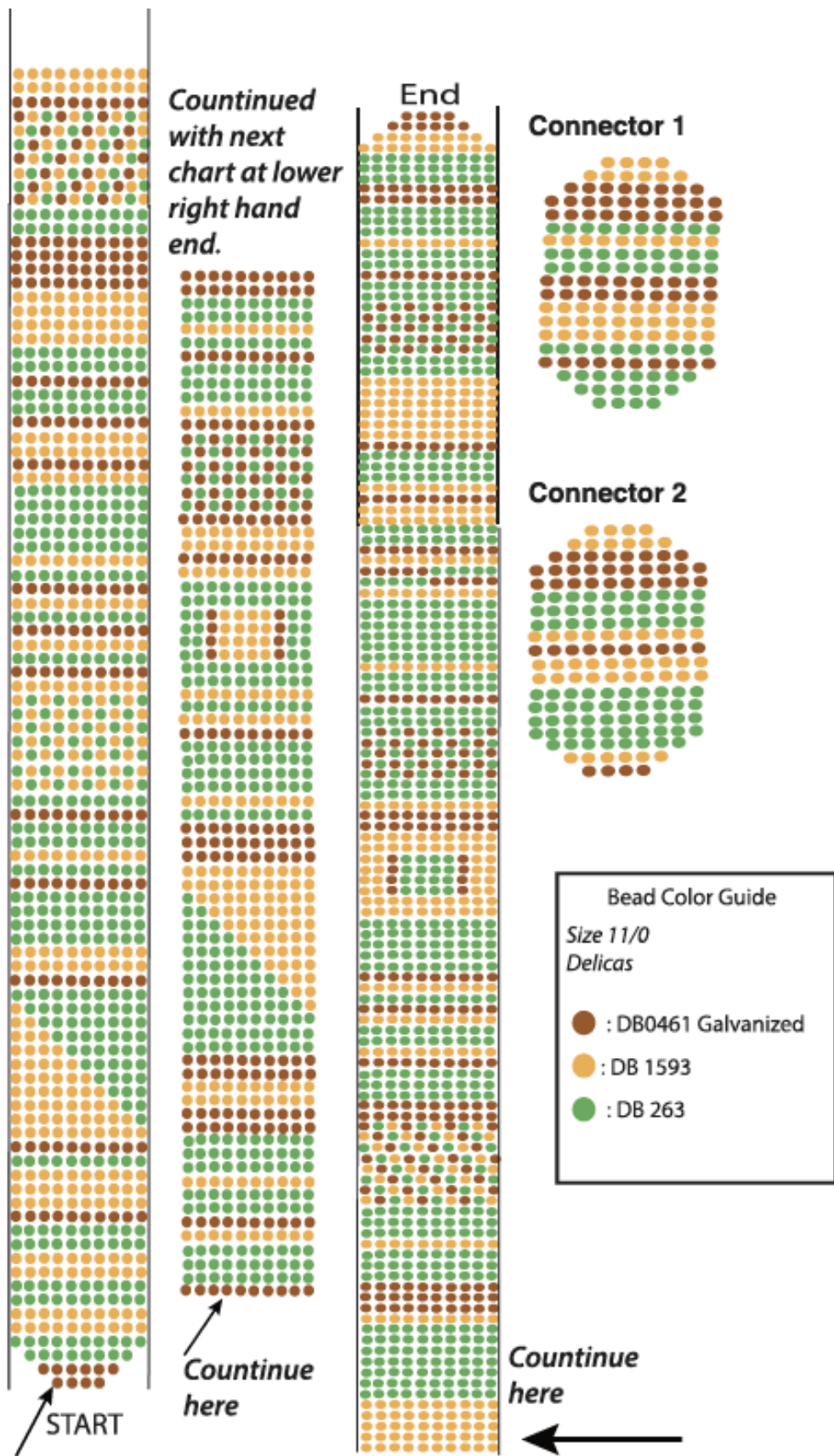
Continuous Warp (for connector pieces)

Decreasing/Increasing

Beads: 10 across

Warp: 11





Necklace:

Loom Set Up

- Set up frame at its longest position (8 3/8")
- Set Warp Guide Beams with groove set (a) on top.
- Warp loom using Method 2: Multiple Warp Threads. Make warp threads 26". Warp loom with 11 threads using

beige thread

- See package instructions for step by step warping.
- Weave design following the bead placement chart.

Tie weft thread

onto warp thread # 4 and begin.

Once the main woven piece is complete, remove from loom and work in weft threads.

Connector Pieces (Make 2)

Loom Set Up:

- Set up frame with approximately 2.5" between Warp Guide Beams
- Set Warp Guide Beams with groove set (a) on top.
- Set 1 peg on each end of the Warp Guide Beams
- Warp loom using Method 1: Continuous warp using pegs. Warp loom with 11 threads using beige thread.
- See package instructions for step by step warping.
- Weave the connector pieces following the bead placement chart. Tie weft thread onto warp #4 and begin.

Finishing:

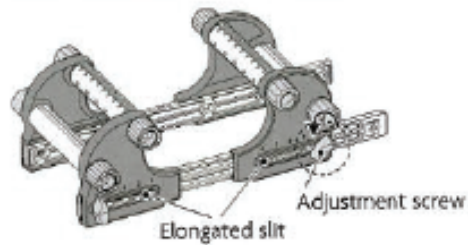
1. Join connector pieces to medium and large Kazuri Beads. Run a needle and thread through several rows of beads before the end. From the end, pass the needle and thread through the medium bead and continue running the thread thru several rows; reverse and go back through the rows in the opposite direction, go back through the med. bead and reverse through the rows to the beginning thread...clip thread ends.

Please see Illustration on next page.

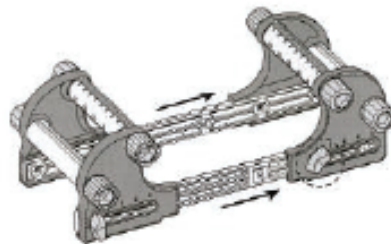


How to Adjust the Loom

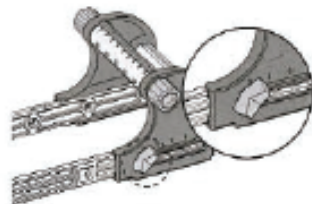
Use the indicators on the rails and elongated slits to adjust the length of the loom in $\frac{3}{16}$ " (1cm) units.



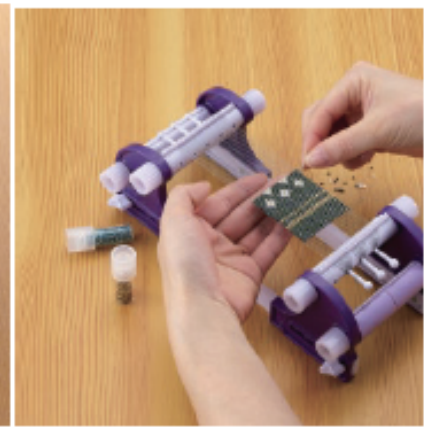
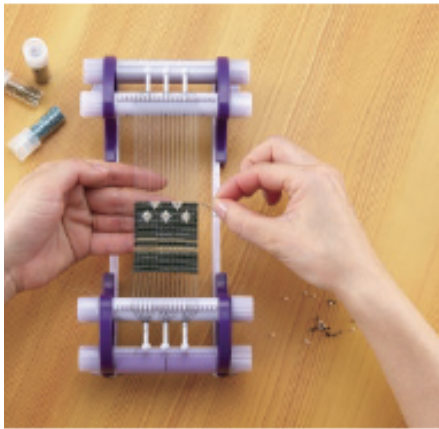
1 Loosen right and left adjustment screws.



2 Move frames to desired length.



3 Set frames at the desired length; then tighten adjustment screws on both sides. Make sure the frame is set at the same position on both rails before tightening the screws.



Glossary of Terms

If you're new to beading or bead weaving, you might not be as familiar with some of the terms used in this book. Here is a short list of the most important terms you'll need to know:

Bead tips: These are used to finish the end of a piece by enclosing the working strands. They also provide a way to attach a clasp to a project. See how to attach a bead tip on page 12.

Clasp: This is any closure used to attach the ends of a finished project. Clasps come with two halves, one to be attached to each end of a completed jewelry piece.

Increases/Decreases: A project is said to have increases or decreases when the number of beads per row is raised or lowered, usually at the beginning and end of the project.

Jump rings: These are small metal rings with a split, allowing them to be opened and closed. They are most often used to connect two different items, like a bead tip and a clasp. See how to work with jump rings on page 12.

Round beads: These are seed beads with a rounded shape.

Treasure beads: These are seed beads with a slightly cylindrical shape.

Warp: The series of threads that run lengthwise through a woven piece and are held in place by a frame or loom.

Weft: The working thread woven widthwise through the warp of a woven piece; in bead weaving, the thread used to attach beads to the warp.

*****Glossary of Terms taken from "Bead on a Weaving Loom" by Carol C. Porter**

Clover Tools used



**Beading Loom
ART NO. 9910**



**Beige Beading
Thread
ART NO. 9913**



**Brown Beading
Thread
ART NO. 9914**



**Beading Needles
ART NO. 9911**



*book is available
for more projects and
can be purchased
through Design Originals.*



1441 S Carlos Ave, Ontario, CA 91761
www.clover-usa.com Toll: 800.233.1703 Fax: 909.218.2161



CT0127