

Clover



*Made with Beading Loom*

**ELEGANT IN BLACK & WHITE**

**Bead loom Earrings & Necklace**

Designs by CAROL C. PORTER

**Make•It**

*free Project*  
**2-in-1**

## ***Earrings***

### ***Supplies:***

Clover's Bead Loom Art No. 9910

Clover's Beading Thread (White Art. No. 9912)

Toho Size 11/0 Treasure Beads

•Black #49

•White#121

•Silver #714

2- 3/Loop Connectors

2- Jump Rings

2- Earring Hooks

6- Clam Shell Bead Tips

Round nose pliers

### ***Technique:***

Continous warp

Decreasing

Beads: 14 across

Warp:15

Earrings:

### ***Loom Set Up-***

•Set up frame with approximately 5 ¼" between Warp Guide Beams

•Set Warp Guide Beams with wider grooves (B) on top.

•Set 1 peg on each end of the Warp Guide Beams

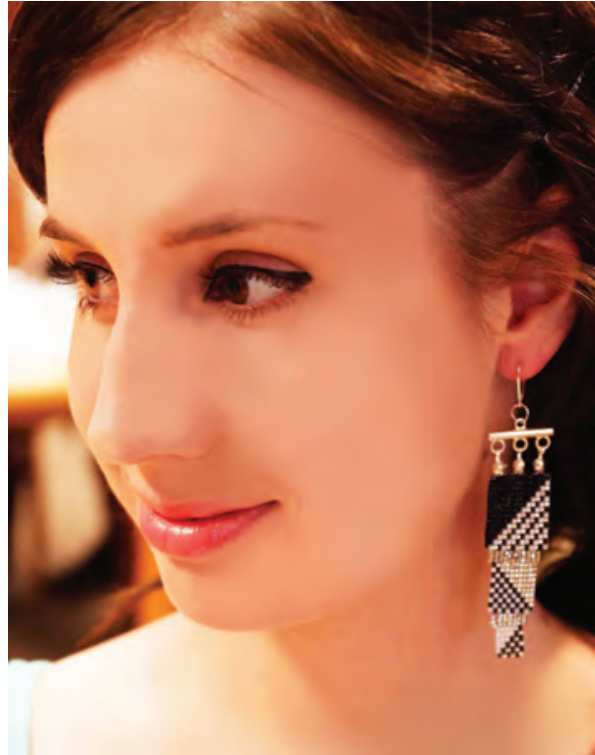
•Warp loom using Method 1: Continuous warp using pegs.

Warp loom with 15 threads using white thread.

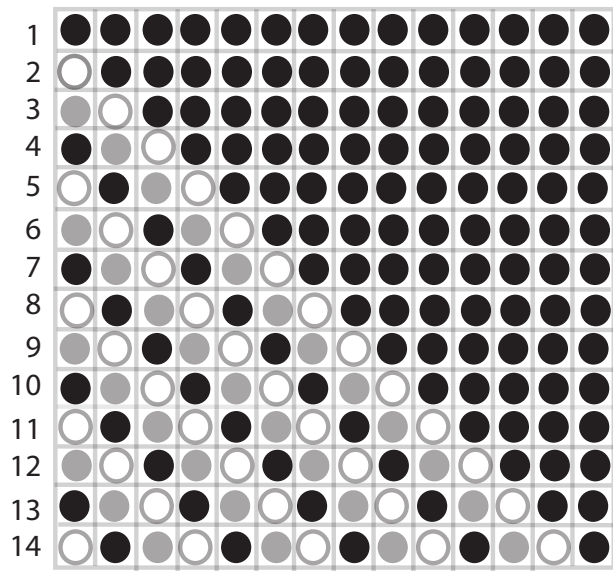
•See package instructions for step by step warping.

**\*\*NOTE: String 3 silver beads on warp thread # 3- 13, 3 additional silver beads on warp threads 5-11 as you are setting up the warp threads on your loom\*\***

•Weave 1 earring following the bead placement chart.



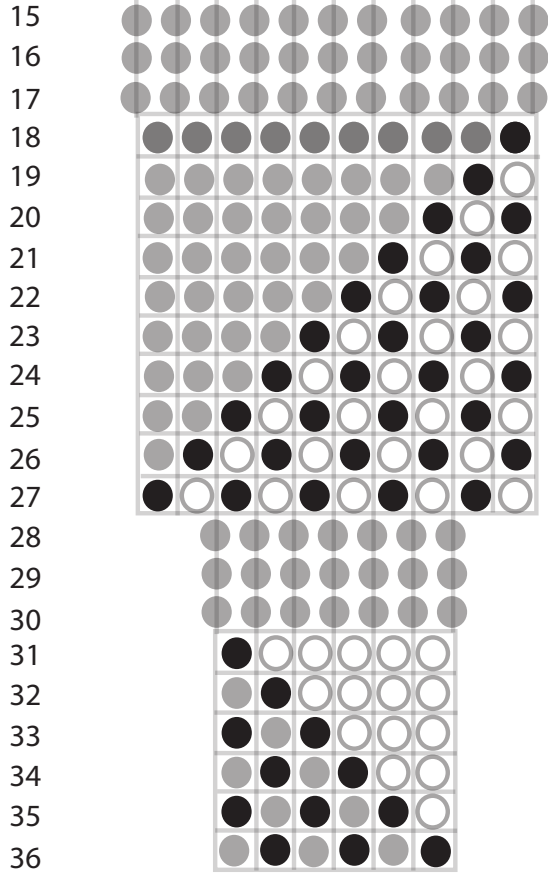




Bead Color Guide

*Toho Size 11/0  
Treasure Beads*

- : Black #49
- : White #121
- : Metallic Silver #714



3 Beads on each warp thread

3 Beads on each warp thread

Make 2



- Decrease after row 15
  - Decrease 1 bead from each end of warp threads
- Follow illustrations below on Increasing and Decreasing

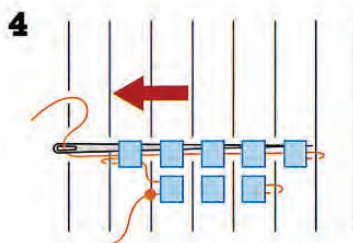
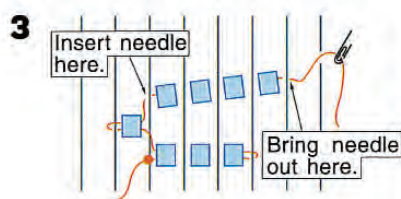
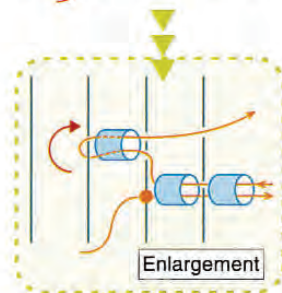
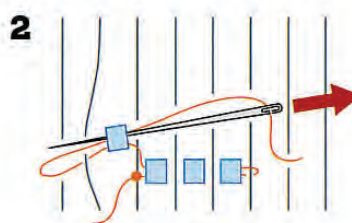
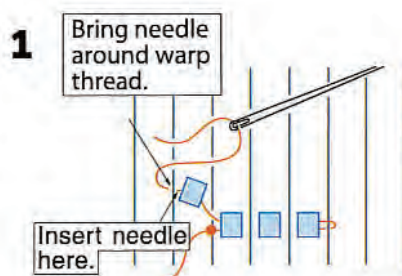
## Increasing

**1** Bring the threaded needle UNDER the warp threads. Pick up the number of beads needed for the increase. For example, if you plan to increase the row by 1 bead at each end, pick up 1 bead. Press the increase bead(s) against the underside of the warp threads, positioning it between the threads, and bring the needle out as shown.

**2** Pass the needle through the increase bead(s), eye first. Make sure to pass the needle OVER the warp threads.

**3** Insert the needle under the warp threads, pick up the remaining beads needed to complete the row, and position them between the warp threads.

**4** Working in the opposite direction, pass the needle, eye first, through all the beads in the row, including the increase bead(s). Repeat these steps as necessary for your project, following the Bead Placement Chart.



# Decreasing

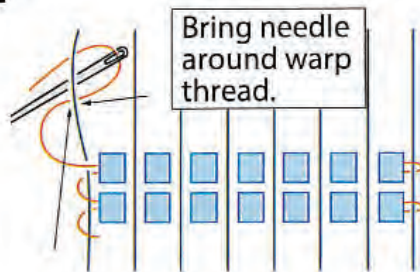
**1** After completing the row before the decrease, catch the warp thread at the left edge with the needle.

**2** Pass the needle through the last bead in the row before the decrease, eye first.

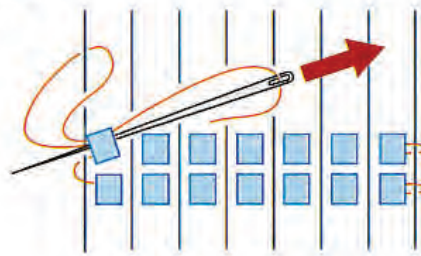
**3** Bring the needle underneath the warp threads, and pass it through the beads of the decrease row. Press the beads up between the warp threads.

**4** Pass the needle back through the beads of the decrease row, eye first. Repeat these steps as necessary for your project, following the Bead Placement Chart.

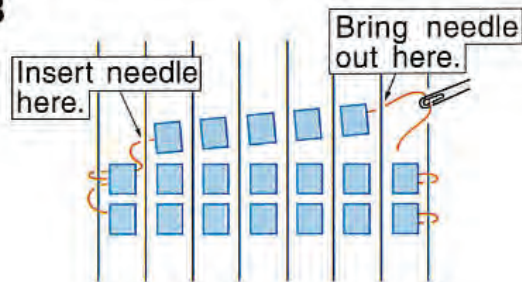
**1**



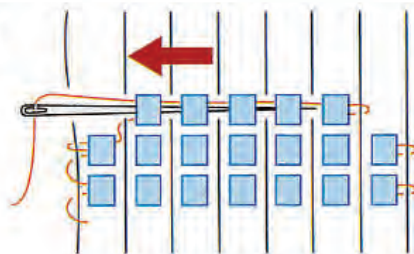
**2**



**3**



**4**







- Draw 3 silver beads down for rows 15-17
- Continue following the bead placement chart for rows 18-27
- Draw 3 silver beads down for rows 28-30
- Continue following the bead placement chart for rows 31-36

***Finishing:***

Gather 3 sets of 4 warp threads across the top of the earrings and place in the clam shell bead tips as shown. Form a ring using the round nose pliers and hook the tips onto the 3 loops. Hide all other warp threads. Use a jump ring to connect the earrings to the earring hooks



*Black, White, Silver  
and purple. Elegance  
around your neck.*



***Supplies:***

Clover's Bead Loom  
Art No. 9910

Clover's Beading  
Thread (Black Art.  
No. 9917)

Toho Size 11/0 Treas-  
ure Beads

- Black #49
- White#121
- Metallic Silver #714
- Purple #928

***Technique:***

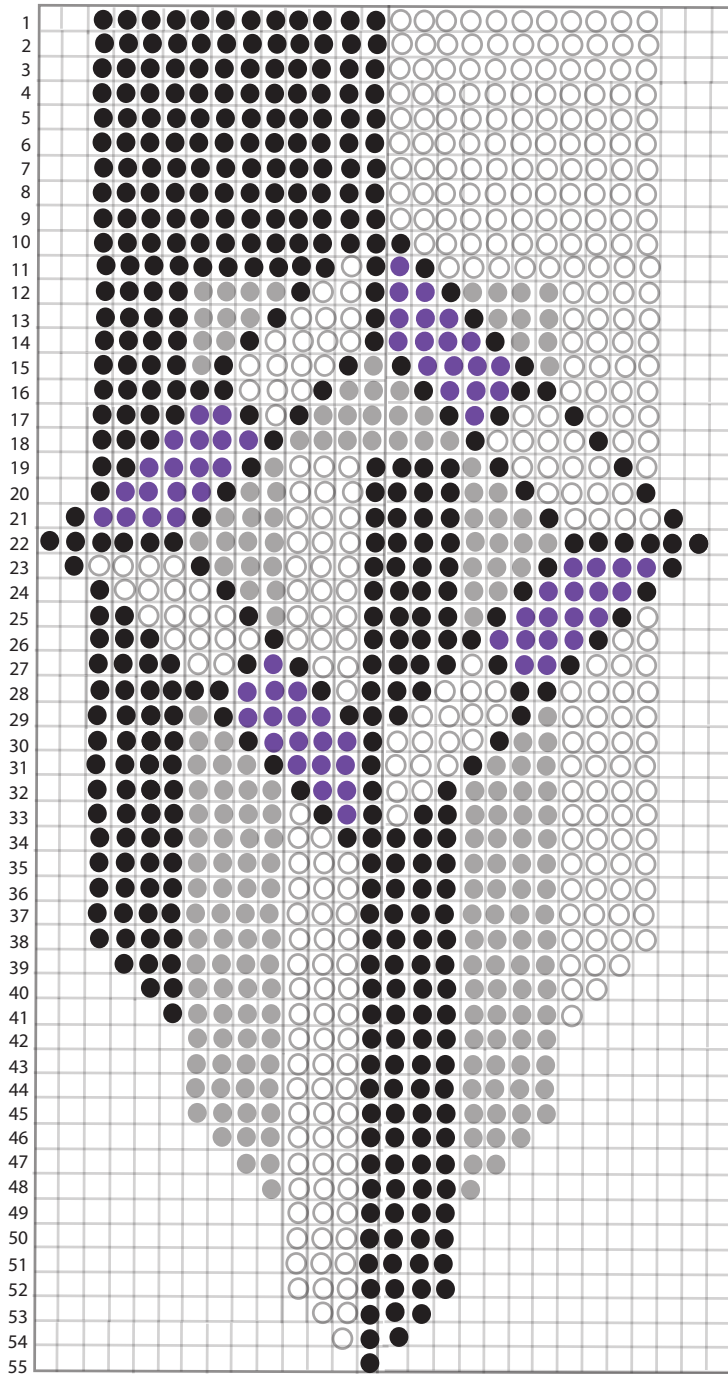
Continuous warp

Increasing

Beads: 27 Bead

Design

Warp: 28



**Bead Color Guide**

*Toho Size 11/0*  
*Treasure Beads*

- : Black #49
- : White #121
- : Metallic Silver #714
- : Purple #928

### ***Loom Set Up-***

- Set up frame with approximately 7.5” between Warp Guide Beams
  - Set Warp Guide Beams with grooves (A) on top.
  - Set 2 pegs on each end of the Warp Guide Beams
  - Warp loom using Method 1: Continuous warp using pegs.
- Warp loom with 28 threads using black thread.  
(Countinued on next page)



- See package instructions for step by step warping.
  - Weave the pendant following the bead placement chart.
- Tie weft thread onto warp #14 and begin. Follow “Increasing Technique” while keeping the weft threads hidden.

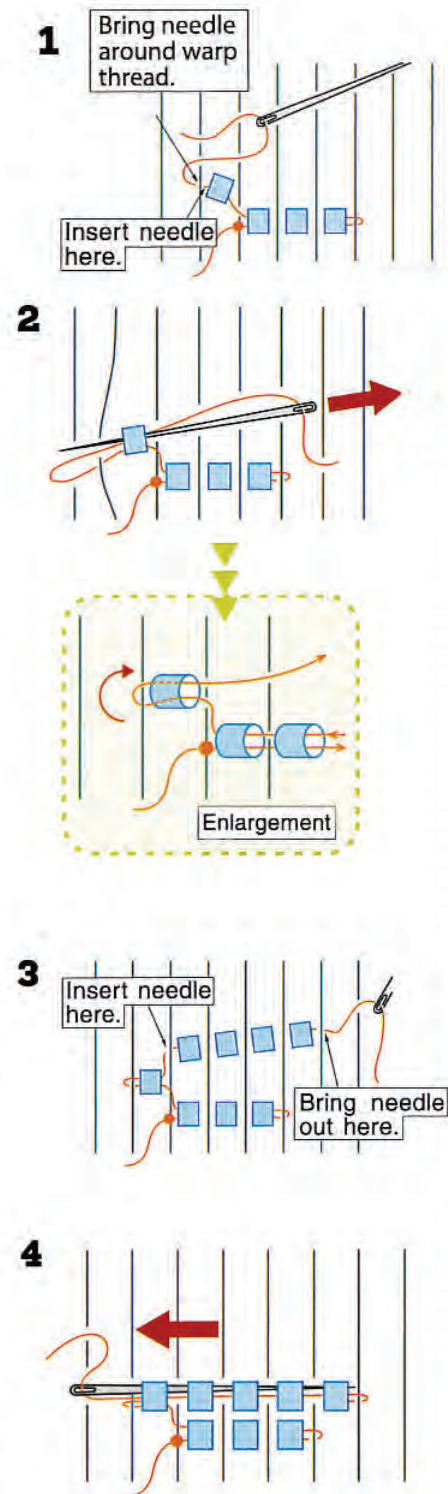
## Increasing

**1** Bring the threaded needle UNDER the warp threads. Pick up the number of beads needed for the increase. For example, if you plan to increase the row by 1 bead at each end, pick up 1 bead. Press the increase bead(s) against the underside of the warp threads, positioning it between the threads, and bring the needle out as shown.

**2** Pass the needle through the increase bead(s), eye first. Make sure to pass the needle OVER the warp threads.

**3** Insert the needle under the warp threads, pick up the remaining beads needed to complete the row, and position them between the warp threads.

**4** Working in the opposite direction, pass the needle, eye first, through all the beads in the row, including the increase bead(s). Repeat these steps as necessary for your project, following the Bead Placement Chart.



•Note: Extra rows were added to create a flap which will fold over the necklace cord- check the width of necklace to ensure there are enough rows to fold over the cord.

***Remove from loom using method B to hide warp and weft threads***

**Method B**

Use this finishing method for a project with a continuous warp thread and increases or decreases on only one end of the woven piece. The warp threads will all be pulled downward toward the increase/decrease end, cut, and then woven back into the piece.

**1** Remove the woven piece from the loom and place it on a flat surface. Pull threads 1–3 downward toward the end with the increase or decrease, following the arrows in Figure 1. Do NOT pull on the outer warp threads (labeled A and B). Continue pulling strands 1–3 downward gently until the thread loops meet the beads in the top row without causing it to pucker. Cut the thread loops at the bottom (see Figure 2).

**2** Thread one of the outer warp threads on a beading needle. If the piece has increases or decreases, pick up UPPER weft threads for several rows, starting at the first full row. Then, run the needle through the closest row of beads, bringing it out at the side. Cut the thread at the edge of the second to last bead in the row. Hide the remaining outer warp thread in the same way (see Figure 3).

**3** With the exception of the threads marked with stars, hide the remaining wrap threads using the method described in Step 2 (see Figure 4).

**4** The starred threads are on the last row. To hide these threads, thread them on a beading needle. Then, pick up the UPPER weft threads for several rows, starting with the second to last row (see Figure 5). Run the needle through a row of beads as shown in Figure 3, and trim the excess thread.

**5** Hide the weft threads at the beginning and end of woven piece as shown in Figure 4 of Method A on page 7.







# Clover Tools used



**Beading Needles  
ART NO. 9911**



**Beading Thread  
Black  
Art. No. 9917**



**Beading Loom  
ART NO. 9910**



*book is available  
for more projects  
and can be  
purchased through  
Design Originals.*

**Connect with Us**

[cloverneedlecraft](#)   [cloverusa](#)   [cloverusa.wordpress](#)  
        
[@cloverusa](#)   [cloverusa](#)   [cloverneedlecraft](#)  
      



1441 S Carlos Ave, Ontario, CA 91761  
www.clover-usa.com Toll: 800.233.1703 Fax: 909.218.2161

**CT0126**

