

Clover "French"ship Bracelets

Fishtail Style with the FRENCH KNITTER



Make It

More project ideas available at www.clover-usa.com



Step 1: Use the 4- Peg head attachment

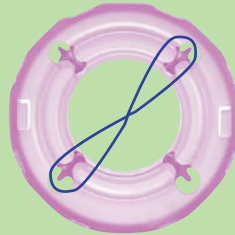


To Change Head:

To remove, turn head counterclockwise and gently pull up.

To attach, set head in notches on body, turn clockwise until it clicks.

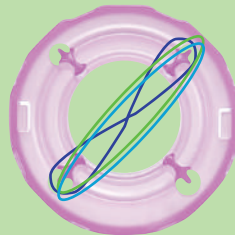
Step 2: Place rubber band on one peg, make a twist, and place other end on peg diagonally opposite from the first one.



Just one twist

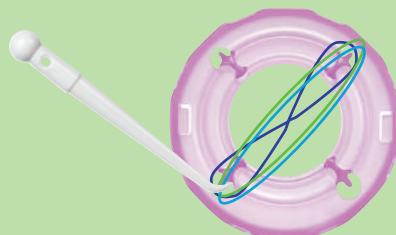
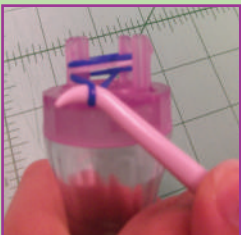


Step 3: Add two additional rubber bands on same two pegs.



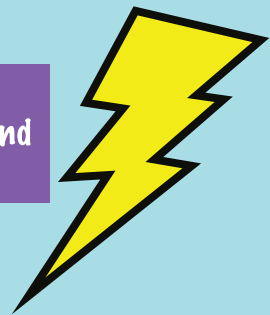
No Twist on these two

Step 4: Use hook to take bottom rubber band and move up and over each peg

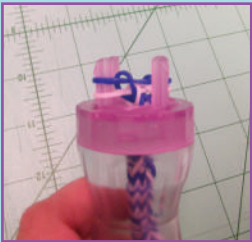


LOL





Step 5: Continue to add one rubber band at a time, taking the bottom rubber band and moving it up and over each peg until desired length is reached.



To Finish:

Step 6: Use hook to take the bottom rubber band and move it up and over each peg. Remove the last rubber band with hook from pegs.



Keep the rubber band on the hook

Step 7: Take the "S" clasp and place rubber band from hook on to one end of the "S" clasp. Grab the two loops on opposite end of the rubber band bracelets with hook and place on the other end of the "S" Clasp.



Add beads for a more personalized look!



**FRIENDS
4-EVER**

Materials Used

BFF



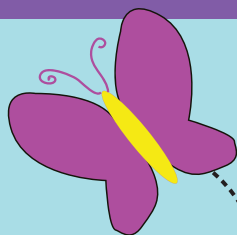
3100: French Knitter



2 cm Rubber Bands



"S" Clasp



1222: Amour Steel Crochet Hook No. 4 (1.25mm)

To Add Beads:

Use our Amour Steel Crochet Hook size No. 4/ 1.25mm
Place a bead with a large enough opening for the rubber band to fit through. Once the bead is on the rubber band, place it on the two pegs.



Each peg head creates a fun and unique look

Project Sheet available on Clovers website, www.clover-usa.com



#cloverfan

Connect with Us

[cloverneedcraft](http://cloverneedcraft.com) [cloverusa](http://cloverusa.com) [cloverusa.wordpress](http://cloverusa.wordpress.com)



@cloverusa



cloverusa



cloverneedcraft



CT0123

1441 S Carlos Ave, Ontario, CA 91761

www.clover-usa.com Toll: 800.233.1703 Fax: 909.218.2161