



FREE



Kanzashi

Tree of Life
Home Decor

Create a timeless wall hanging for your home or office using Orchid and Daisy Kanzashi Makers. Add attractive buttons to the center of the flower for a stunning finish.

Make-It

English • Spanish

Kanzashi Tree of Life

By Alicia Carr

Bring spring right into your home with this Floral Collage. Assorted solid fabrics, a variety of buttons, purchased Cherry Blossom Branch, an open frame and you have given a dark spot in your décor a splash of color.

Supplies:

- 15" x 32" Shadow Box
- Velvet to cover the Shadow Box Background (Optional)
- 1 Cherry Blossom Branch
- Art No. 8486 Kanzashi Flower Maker Orchid small
- Art No. 8487 Kanzashi Flower Maker Orchid large
- Art No.8488 Kanzashi Flower Maker Daisy small
- Art No. 8489Kanzashi Flower Maker Daisy large
- 8 assorted solid fabrics for the flowers
- 18 assorted buttons for flower centers
- Needle & Quilting Thread
- Florist Wire
- T-Pins



Suministros:

- Marco de 15 x 32 pulgadas
- Terciopelo para cubrir el fondo del marco
- 1 rama de flor de cerezo
- Art. N° 8486 Confeccionador pequeño de flores Kanzashi (orquídeas)
- Art. N° 8487 Confeccionador grande de flores Kanzashi (orquídeas)
- Art. N° 8488 Confeccionador pequeño de flores Kanzashi (margaritas)
- Art. N° 8489 Confeccionador grande de flores Kanzashi (margaritas)
- 8 telas variadas, en un solo fondo, para las flores
- 18 botones surtidos para centros de flor
- Hilo y aguja de acolcha
- Alambre de floristería
- Alfiler estilo T

Instructions:

Make 18 Flowers. Collage has:

- 8 Large Orchids
- 4 Small Orchids
- 4 Large Daisies
- 2 Small Daisies

Instrucciones

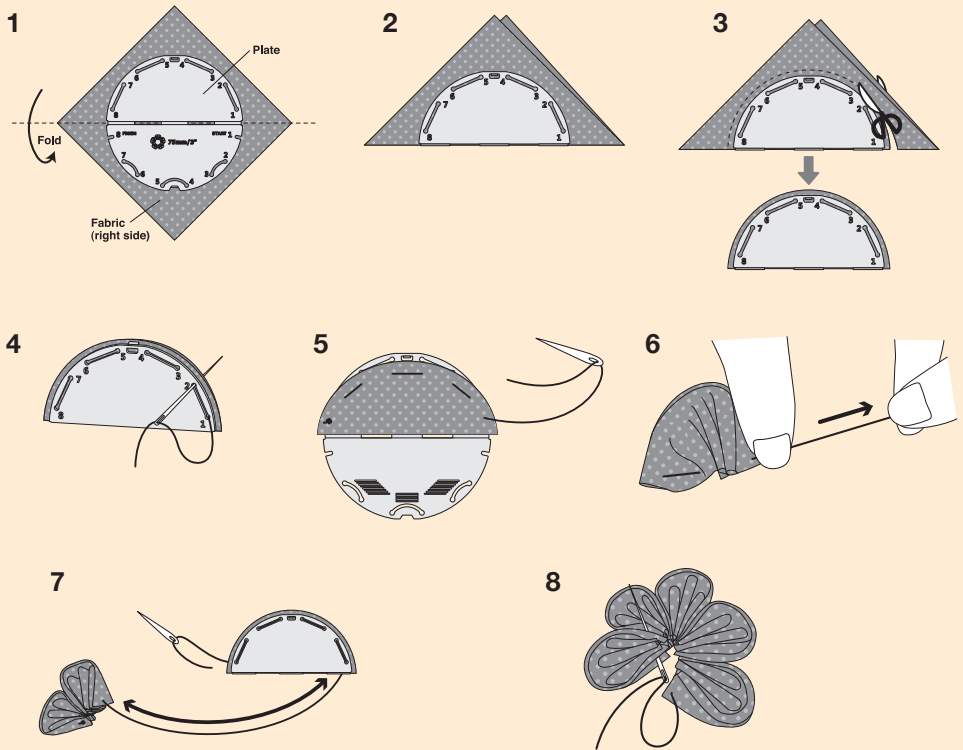
Haga 18 flores. Este collage tiene:

- 8 orquídeas grandes
- 4 orquídeas pequeñas
- 4 margaritas grandes
- 2 margaritas pequeñas



The instructions for creating these flowers are in the package.

En el paquete están las instrucciones para hacer estas flores.



Finish the center of the flowers by inserting the florist wire through the button eyelet and pass the wire through the center of the flower.

Termine los centros de flores cosiendo o uniendo con pegamento caliente los botones.

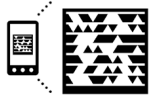
Assembly:

1. Center the Cherry Blossom Branch on the frame background and secure using T-pins.
2. Wire the flowers to the branch.

Armado:

1. Centre la rama de cerezo en el fondo del marco. Aseguro la rama usando alfileres
2. Usando alambre de florista, asegure cada flor somber la rama de cerezo.





Get the free mobile app at <http://gettag.mobi>



Orchid

**8486 Kanzashi Flower Maker
Orchid Petal Small**
MSRP: \$5.75

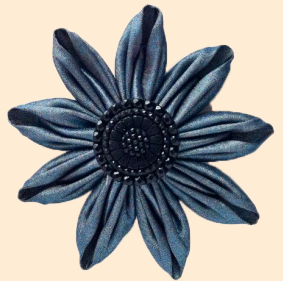
**8487 Kanzashi Flower Maker
Orchid Petal Large**
MSRP: \$6.00



Daisy

**8488 Kanzashi Flower Maker
Daisy Petal Small**
MSRP: \$5.75

**8489 Kanzashi Flower Maker
Daisy Petal Large**
MSRP: \$6.00



Get Social. Follow us



[/cloverneedlecraft](https://www.facebook.com/cloverneedlecraft)



[@cloverusa](https://twitter.com/cloverusa)



[cloverusa](https://www.pinterest.com/cloverusa)



cloverusa.wordpress.com

CLOVER NEEDLECRAFT, INC.

Ontario, CA 91761 USA www.clover-usa.com

Toll Free: 1-800-233-1703 Fax: 909-218-2161

CT0106



0 51221 00688 3