

# Ruffled Apron

Made with Fuse 'n Gather "Fusible Gathering Tape"

FREE



## Make-It

English • Spanish

Cook and entertain in style! This ruffled apron makes you want to cook! Great gift idea for that perfect hostess.

 Clover

[www.clover-usa.com](http://www.clover-usa.com)

# Ruffled Apron

Designed by Beckie Hansen

These flouncy aprons are so "girly" and fun...made easily using Clover's Fuse 'n Gather. Protecting clothes from drips and splashes has never been so stylish!

## Supplies:

Fuse 'n Gather, Rotary Cutter, Rotary Mat, Pins, and Clover Chaco Liner.

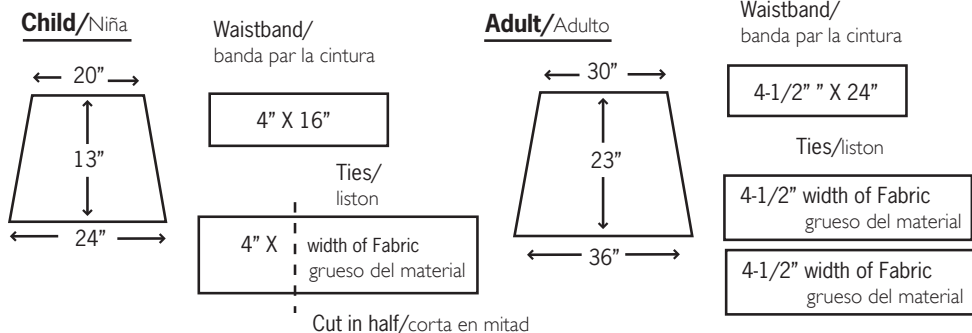
## Fabric Requirements:

Basic Apron and Waistband	<b>Child</b> 1/2" yd	<b>Adult</b> 2/3 yd
Ruffles Coordinating Fabrics	5 strips 4" wide	5-6 strips 5" wide
Waistband Interface	2" X 16"	2-1/4" X 24"



## Basic Apron:

Note: These measurements can be adjusted for size around and for height.



## Ruffles

- Cut strips 4" wide for Child's apron and 5" wide for the Adult apron.
- Decide on order of ruffle placement on the apron base.
- Hem both long edges for the middle ruffles.
- Hem only the bottom edge for the first and last ruffle.
- Note: The first ruffle top edge finishes into the waistband; the last ruffle is sewn to the bottom of the apron base.
- Mark each ruffle into quarters; press on Fuse 'n Gather just below the top hem of all ruffles. Ill. #1

## Ruffle Placement

- Use Chaco liner and mark the apron base into quarters.
- Pin bottom ruffle matching the quarter markings; gather, pin and sew to the bottom of the apron base.
- Lay the next ruffle over the previous so that it just covers the top hem and match all quarter markings. Gather, pin, and sew into place.
- Continue until all layers are sewn.

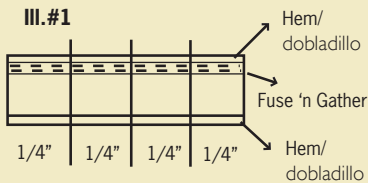
## Waistband and Ties

- Add interface to one half of the waistband.
- Sew ties right side together; turn right side out.
- Sew ties to each end of the waistband. Ill. #2
- Slightly gather apron top to fit the waistband size. Pin right side of waistband below ties to wrong side of apron base; sew. Ill. #3
- Press waistband sides and top using a 1/4" seam allowance. Bring waistband over the apron top and topstitch in place. Ill. #4

# Illustrations/Ilustración

## Ruffles/Fruciles

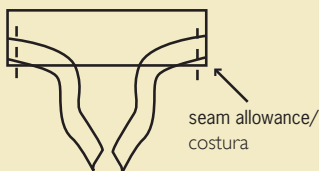
### III.#1



## Ties/liston

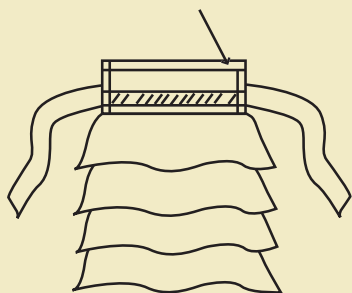
### III.#2

Waistband Right Side/banda de cintura a lo derecho



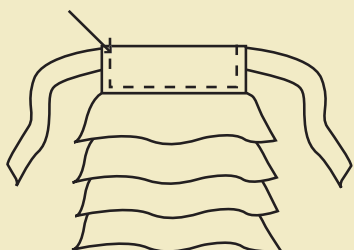
### III.#3

Press 1/4" seam allowance/costura



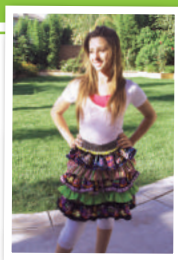
### III.#4

Topstitch/punto superior



## Delantal Frucido

Para Madres e Hijas  
Diseñado por Beckie Hansen



Estos delicados delantales son femeninos, divertidos y muy faciles de hacer usando Fuse 'n Gather de Clover: Protegiendo la ropa de manchas y salpicaduras nunca ha sido tan elegante!

**Materiales:** Fuse 'n Gather, Cortador circular, Estera circular, Alfileres, Marcador Clover Chaco.

### Requisitos para la tela:

	Niña	Adulto
Delantal básico y banda para la cintura	1/2 yarda	2/3 yardas
Tela coordinada para los volados	5 tiras de 4" de ancho	5-6 tiras de 5" de ancho
Interfaz de la cintura	2" x 16"	2 1/4" x 24

### Delantal basico:

Nota: Estas medidas se pueden ajustar para la cintura y la altura

### Fruciles

- Corta tiras de 4" de ancho para la delantal de la niña y 5" de ancho para el del adulto
- Decide el orden en que se colocaran los fruciles en la base del delantal
- Hagale bastilla a los dos lados largos de la tira para el volante de en medio
- Hace un dobladillo en el borde inferior del primer y ultimo frucil
- Nota: El borde superior del primer frucil termina en la cintura y el ultimo frucil se cose en la parte interior de la base del delantal
- Marca cada frucil en cuartos, coloca Fuse 'n Gather justo debajo del dobladillo superior de todos los fruciles. Ilustración #1

### Colocasion de los fruciles

- Usa Chacoliner para marcar la base del delantar en cuartos.
- Sujeta el frucil interior con alfileres de acuerdo con las marcas de cuartos. Sujeta con alfileres y cose en la parte interior de la base del delantal.
- Coloca el proximo frucil sobre el anterior de modo de que cubra solo la bastilla superior; De acuerdo con las marcas de cuartos. Sujeta con alfileres y cose en su lugar.
- Continúa hasta coser todas las capas.

### Banda de la cintura y ties

- Agrega la interfaz a una mitad de la banda de la cintura
- Cose las tiras a la derecha y despues volte a lo derecho
- Cose las tiras a cada extremo de la banda de la cintura. Ilustración #2
- Frunce ligeramente la parte superior del delantal para adaptar al tamaño de la banda de la cintura. Sujeta con alfileres y cose la banda de la cintura al delantal. Ilustración #3
- Plancha la frente y los lados de la banda de la cintura dejando 1/4" de costura. Coloca la banda de la cintura sobre la parte superior del delantal y pespuntea en su lugar. Ilustración #4

# NANCY ZIEMAN

Nancy Ziemann, best known for producing and hosting the popular PBS TV show *Sewing with Nancy*®, is a national sewing authority, author, pattern designer and a business woman. For more information visit [nancyzieman.com](http://nancyzieman.com).



## Fuse 'n Gather "Fusible Gathering Tape"

WITH NANCY ZIEMAN®

Press, Pull, Stitch and you have a gather! Gathering has never been this easy. Simply press the Fuse 'n Gather on the wrong side of the fabric with medium heat, tie threads at one end, pull blue threads at opposite end to gather. Perfect for dresses, pillows, quilts, and many types of crafts. Comes in 5/8" width in 6 and 15 yards.

Art no. 9526 (6 yards)

MSRP: \$7.95

Art no. 9527 (15 yards)

MSRP: \$14.75

Scan the TAG!

Watch the video demo on your smart phone.



## Fuse 'n Bind "Fusible Binding Tape"

WITH NANCY ZIEMAN®

Also try, Fuse 'n Bind! Make fabric binding and accurate bound edges! Just press, fold, and bind! No more cutting fabric in bias strips! Straight fabric strip is all you need. Perfect for sewing, quilting, or drawstrings. Comes in 1/2" width in 2 and 6 yards.

Art no. 9573 (2 yards)

MSRP: \$6.95

Art no. 9574 (6 yards)

MSRP: \$10.95



Get social. Follow us on  /cloverneedlecraft  @cloverusa

CT0098

CLOVER NEEDLECRAFT, INC.

Ontario, CA 91761 U.S.A. [www.clover-usa.com](http://www.clover-usa.com)  
Toll Free: 1-800-233-1703 Fax: 909-218-2161

