



"Takumi®" The Best of Bamboo

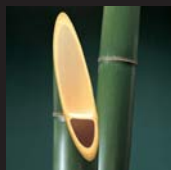
"Takumi®" is the masterpiece of craftsmanship that is the product of carefully selected materials along with Clover's high quality manufacturing technology. Clover's many years of experience and accumulated technologies take full advantage of premium materials to create natural knitting needles and crochet hooks. The more you use our products the more you love them. The shape of our needle tip is a favorite among many. The smooth finish glides through your work and enables long periods of knitting without fatigue.

Bamboo is a strong, elastic and hardy fiber. Its smooth surface and comfortable fit are the most desirable for knitting needles. Only the most premium parts of the bamboo are used for the needles.



Finest Top Quality Material

● Place of Origin is limited to cold areas with little snow. *Bamboo in cold areas with little snow is very resistant to bending making this bamboo most desirable for knitting needles. Heavy snow conditions result in bent bamboo.*



Vertical fiber

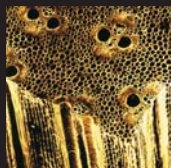
● Appropriately aged Bamboo is selected. *Young bamboo less than 3 years old is too soft while bamboo older than 5 years is too fragile. 4 to 5 year old bamboo is the most durable bamboo to use.*

● Cutting period is limited to winter *Bamboo in winter has less moisture and the fiber is more compact. Moist bamboo often produces spots and mold.*

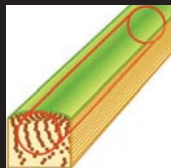


Bundle of tough natural fiber

● Only suitable sections of bamboo are used. *Thick bamboo with long intervals between burls is selected. Compact, hard, and strong parts just under the skin are used. Bent, burlled and parts near the roots are never used.*



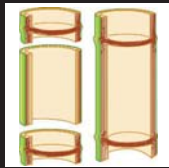
Expanded illustration of the fiber



We use hard dense fibers



Harvest in Winter



Cut and divided vertical fiber line



Hi-Tech Processing Technology

Clover's high quality processing technology produces "Takumi®" excellence.

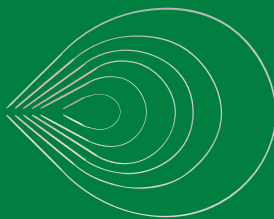
- Needle shaft has even thickness. *Complying with our precise standard promises neat stitches and beautiful results.*
- Smooth surface. *A smooth surface is the result of being polished several times with a fine abrasive in the direction of the needle shaft. This allows the yarn to glide easily along the needles and reduces fatigue.*
- User friendly needle point that never splits yarn. *Clover's standard of a delicately polished tip leaves no shards of fibers to split yarn.*

匠

Takumi® Bamboo Knitting Needles



Art. No. 3016/9
3016/16
3016/24
3016/29
3016/36
3016/48



NEW

Takumi Combo Set
Includes 5 cords and
12 tip sizes creating
60 combinations
stored in an
exclusive luxury case!



Art. No. 3011

"Takumi®" Bamboo Needles Single Pointed 9"

Set of 2 (Single Pointed)

Length: 9 inch (23cm)

Sizes: 0,1,2,3,4,5,6,7,8,9,10,10.5,11,13,15

Packing: 1 pair/pack, 3 packs/box

Art. No. 3012

"Takumi®" Bamboo Needles Single Pointed 13"-14"

Set of 2 (Single Pointed)

Length: 13 inch (33cm)

Sizes: 0,1,2,3,4,5,6,7,8,9,10,10.5

Packing: 1 pair/pack, 3 packs/box

Set of 2 (Single Pointed)

Length: 14 inch (36cm)

Sizes: 11,13,15

Packing: 1 pair/pack, 3 packs/box

Art. No. 3014 (5"), 3015 (7")

"Takumi®" Bamboo Needles Double Pointed 5"-7"

Set of 5 (Double Pointed)

Length: 5 inch (12.5cm)

Sizes: 0,1,2,3,4,5,6,7,8,9,10,10.5

Packing: 1 set/pack, 3 packs/box

Set of 5 (Double Pointed)

Length: 7 inch (18cm)

Sizes: 0,1,2,3,4,5,6,7,8,9,10,10.5

Packing: 1 set/pack, 3 packs/box

Art. No. 3016/9 (9")

"Takumi®" Bamboo Circular Needles 9"

Length: 9 inch (23cm)

Sizes: 0,1,2,3,4,5,6,7,8

Packing: 1 each/pack, 3 packs/box

Art. No. 3016/16 (16"), 3016/24 (24"), 3016/29 (29"), 3016/36 (36")

"Takumi®" Bamboo Circular Needles 16"-36"

Length: 16 inch (41cm) / 24 inch (61cm) / 29 inch (74cm) / 36 inch (91cm)

Sizes: 0,1,2,3,4,5,6,7,8,9,10,10.5,11,13,15

Packing: 1 each/pack, 3 packs/box

Art. No. 3016/48 (48")

"Takumi®" Bamboo Circular Needles 48"

Length: 48 inch (122cm)

Sizes: 0,1,2,3,4,5,6,7,8,9,10,10.5

Packing: 1 each/pack, 3 packs/box

Art. No. 3683

NEW "Takumi®" Combo Set Interchangeable Circular Knitting Needles

Cord Lengths: for 16 inch (41cm) / 24 inch (61cm) / 29 inch (74cm) / 36 inch (91cm) / 48 inch (120cm) (one each)

Needle Sizes: 3,4,5,6,7,8,9,10,10.5,11,13,15 (one pair / two pcs.)

Packing: 1 set/pack, 1 pack/box

CLOVER NEEDLECRAFT, INC.

Ontario CA 91761 PHONE: 800.233.1703 FAX: 909.218.2161

CLOVER MFG. CO., LTD. JAPAN

CT0087 JAN 2011