



Kids' Crafts

HALLOWEEN SERIES

FREE
PROJECTS



make·it

more project ideas available at www.clover-usa.com

Made with
POM-POM MAKERS

Pumpkin Decor

Supplies

- 1 Large Clover Pom-Pom Maker
Art.No.3126
- Clover Patchwork Scissors
Art.No 493
- Orange yarn
- 1 leaf green chenille stem
- 1 large green leaf
- 2 small fall-colored leaves
- Glue gun and glue sticks
- Pencil and wire cutter



Assembly directions

PUMPKIN

Make yarn pom-pom per package instructions and set aside.

STEM

Cut chenille stem in half with wire cutter and set one piece aside.

Wrap one piece around a pencil to curl and set aside.

Glue the pumpkin onto the leaf.

Place a small amount of glue on one end of the curled stem and insert into the center of the pumpkin. Glue one small Fall leaf on either side of the stem.



Friendly

Supplies

- 1 Large Clover Pom-Pom Maker
Art. No. 3126
- Clover Ultimate Scissors Ex 170
Art. No. 4933
- White yarn
- ½ yard white nylon netting
- 1 yard each narrow ribbon
(black and orange)
- 2 12mm wiggle eyes
- 1 white chenille stem
- Pink powder blush
- 2 doves (available in Bridal Crafts notions)
- Black permanent ink marking pen
- Hot glue gun and glue sticks

Spooky Spiders

Supplies

- 1 Small Clover Pom-Pom Maker
Art. No. 3124
- 1 Large Clover Pom-Pom Maker
Art. No. 3126
- Clover Patchwork Scissors
Art.No. 493
- Black Yarn
- 2 Black chenille stems
- 2 6mm wiggle eyes
- Hot glue gun and glue sticks
- Wire cutters

Assembly directions

BODY and HEAD

With black yarn make one large and one small pom-pom per the instructions on the package. Glue the head to the body and set aside.

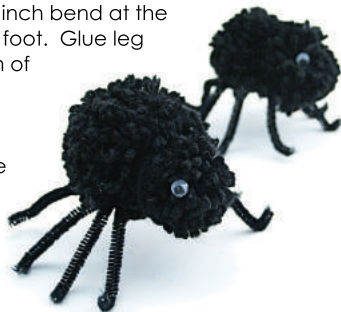
LEGS

Cut each chenille stem in half with wire cutters. Place the 4 pieces side by side and twist them together in the center and then tie the center securely with a separate piece of yarn.

Hold the center firmly, separate the legs on each side. About ½ inch away from the center on each side, bend each leg down. Make a ½ inch bend at the end of each leg to form a foot. Glue leg assembly firmly to bottom of spider body.

EYES

Glue one wiggle eye on each side of the head.



Ghost

Halloween Series created by Florence Tebbets

Assembly directions

1. Make one pom-pom (3 3/8" size) according to directions on the package. Tie off securely with an extra long length of thread or yarn. Make a knot at the end for a hanger.
2. Glue on the wiggle eyes. Brush a small amount of powder blush on each cheek Set aside.
3. Cut the nylon netting in half on the fold. Please note: Nylon netting often comes 72" wide in which case this will yield 4 pieces. Set aside the remaining 3 pieces for more ghosts or another project.
4. Fold the nylon netting into fourths and cut a tiny hole in the center of the fold. Open the netting and insert the long tie through the hole enclosing the pom-pom. Gather the netting around the neck and tie with an additional length of thread
5. Place the chenille stem around the neck and twist to secure. Fold each end about ½ inch to create hands. Bend to form an elbow on each arm.
6. Tie the ribbons into a bow around her neck and set aside.
7. Paint the doves with the permanent black ink marking pen to make crows.
8. Glue one crow on top of her head and one crow on her hand. It is helpful to hang the ghost to allow the crows to adhere and the glue to dry thoroughly.



POM-POM MAKERS

CREATE PERFECT POM-POMS IN MINUTES!

Clover's Pom-Pom Makers are just what you need to create beautiful Pom-Poms!
Perfect for embellishing clothes, home decor, and accessories of all kinds.



EXTRA LARGE
Item No. 3128
Size approx. 4 1/2"



SMALL
(2 sizes)
Item No. 3124
Size approx. 1 3/8" and 1 5/8"



LARGE
(2 sizes)
Item No. 3126
Size approx. 2 1/2" and 3 3/8"



EXTRA SMALL
(2 sizes)
Item No. 3127
Size approx. 3/4" and 1"

CLOVER NEEDLECRAFT, INC.

Ontario, CA 91761 U.S.A. www.clover-usa.com

TOLL-FREE: (800) 233-1703 FAX: (909) 218-2161



CT0040
JULY 2008