



**FREE
PROJECT**

**HANDMADE &
HANDPICKED
POM-POM
hydrangeas**



CREATED WITH
**POM-POM
MAKERS**



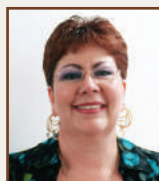
make·it

more project sheets available at www.clover-usa.com

Hydrangeas

Made with Clover's Extra Large Pompom Maker

Maintain brilliantly colored Hydrangea that you never have to water! Use our Extra Large Pompom Maker, select Hand-dyed fabrics that are complimentary to Hydrangeas, add stems and leaves and you'll have a stunning bouquet.



Project Created by
Alicia Salazar

Supplies

For 6 Hydrangeas: 1 Extra Large Clover Pompom Maker Art No. 3128

1 yard each of 3 Hand-dyed color ways

*Note: We used hand-dyed fabrics from Shades Textiles**

Each yard package is made up of 8 – 1/8 yard pieces. Colors: #1266 Violet

#1201 Raspberry & #1231 Avocado

Clover Rotary Cutter (45mm) & Mat (12" x 18") Art No's. 7500 & 7520,

Clover Scissors Art No. 493

24 Hydrangea Leaves (4 leaves per flower),

6 Green Florist Wire Stems,

1 Roll Green Florist Tape 1 pair Pliers

Cutting and Assembly Directions

A. Cut fabric into long strands.

1. Fold fabric in half with selvages together.
2. Bring the fold up to 1/2" below the selvage edges.
3. Cut in 3/8" segments through the fold, but not through the selvages.
4. Unfold once, cut the fabric apart between strip one and two starting from the left hand side of the top selvage edge.
5. Then cut between every other strip thereafter.
6. Return to the bottom selvage edge and starting from the left hand end, cut between every other strip.

B. Wrap fabric strips on the Pompom Maker as per instructions on the package. Mixing colors and values helps to give depth to the coloration of each Hydrangea Pompom.

C. Tie the pompoms off through the center using florist wire bending it as you go. Add a second stem at the base and using pliers twist the center wire and stem wire together.

D. Wrap the Florist tape around the wire stem adding the hydrangea leaves as you cover the stem wire.

E. Trim pompoms using pinking shears.

* Visit www.ShadesTextiles.com for a complete catalogue of available colors.

Clover Pom-Pom Makers



Art No. 3124 (Small)
Approx. size 1 3/8"



Art No. 3126 (Large)
Approx. size 2 1/2"



Art No. 3127 (Ex-Small)
Approx. size 3/4" - 1"



Art No. 3128 (Ex-Large)
Approx. size 4 1/2"

CLOVER NEEDLECRAFT, INC.

13438 ALONDRA BLVD. CERRITOS, CA 90703
TOLL: (800)233-1703 Fax: (562)282-0220 Website: www.clover-usa.com

CT0032