

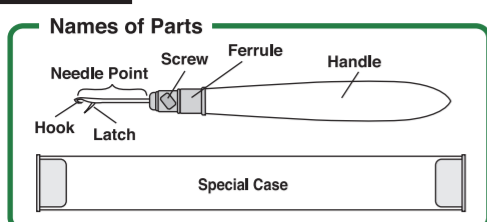


Art No.9900 "Kantan Couture" BEAD EMBROIDERY TOOL

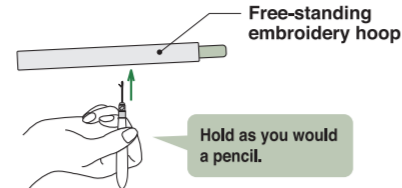
Distributed in U.S.A. by CLOVER NEEDLECRAFT, INC. Ontario, CA 91761-7676 U.S.A. www.clover-usa.com

CLOVER MFG. CO., LTD. 3-15-5 Nakamichi, Higashinari-ku, Osaka, Japan www.clover.co.jp www.clover-mfg.com

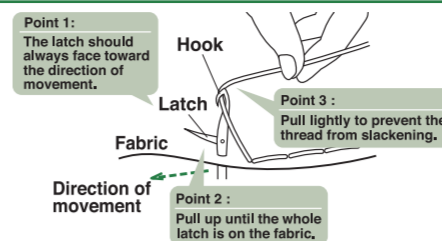
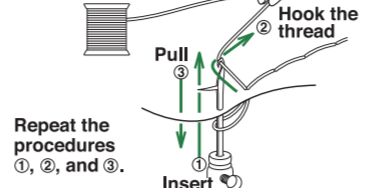
ENGLISH



How to hold the needle



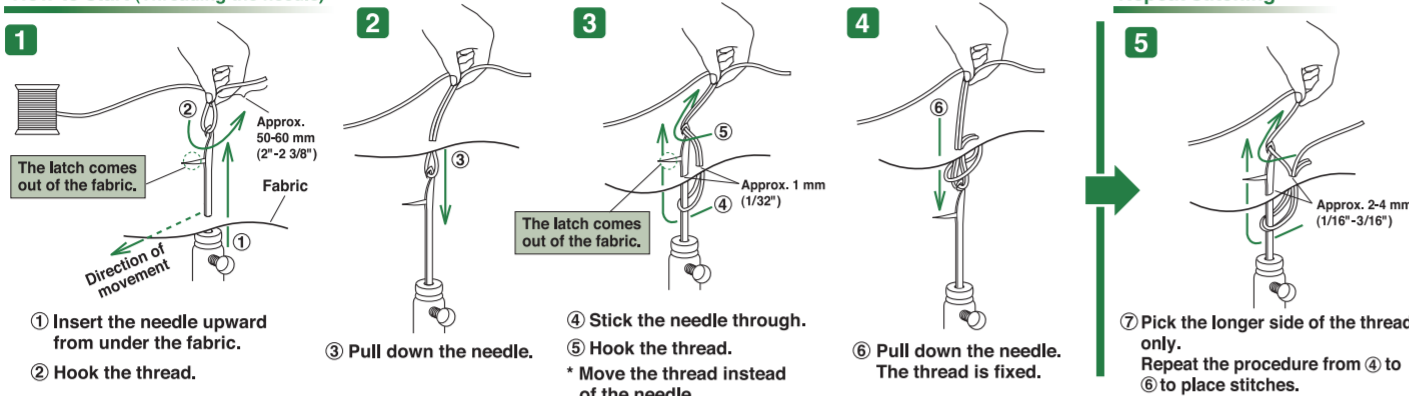
Basic Stitch



Point 1: Make the latch point in the direction of movement so that the thread will not become unhooked.
Point 2: If the whole latch is not pulled up to the surface of the fabric, the hook will catch on the fabric.
Point 3: If the thread becomes slack, the hook tends to catch the loop of the previous stitch.
 * If the latch catches the fabric, free the latch with care and insert again. Do not force the needle in or out from the fabric. It may break the needle.

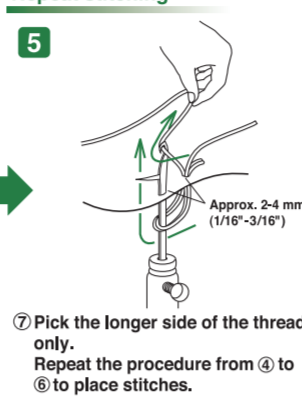
How to do basic stitches

How to start (Threading the needle)



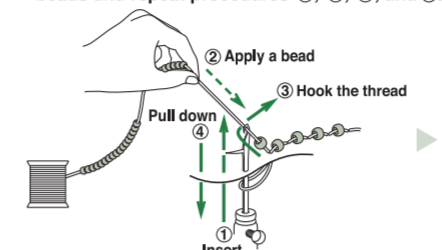
Line stitch

Repeat stitching

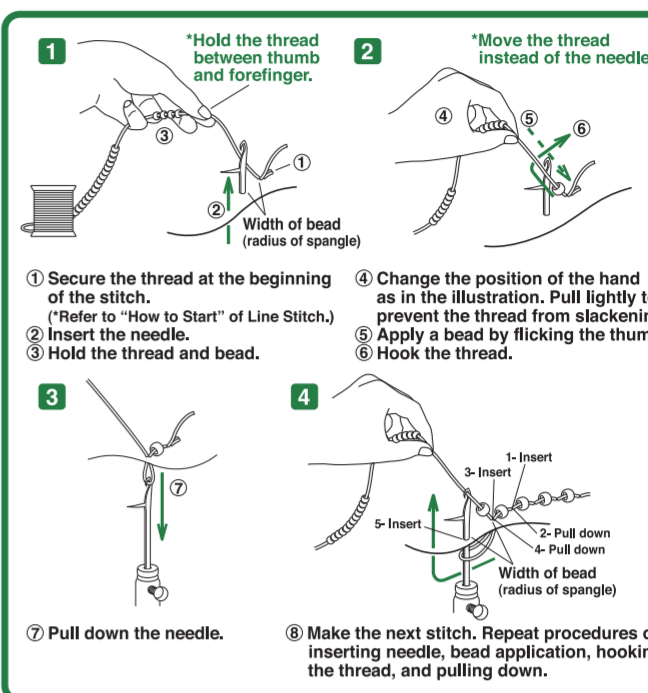


Applying beads and spangles

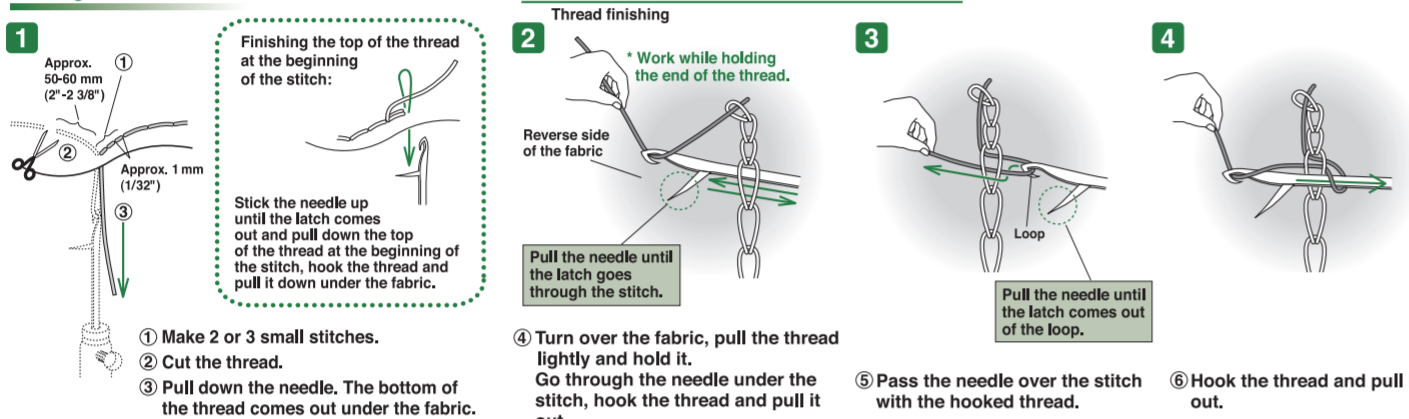
While making the basic line stitches, apply the beads and attach them. Prepare the stringed beads and repeat procedures ①, ②, ③, and ④.



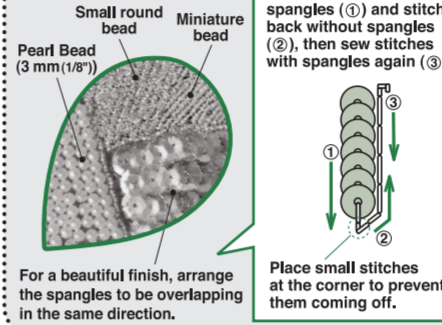
Beads Stitch



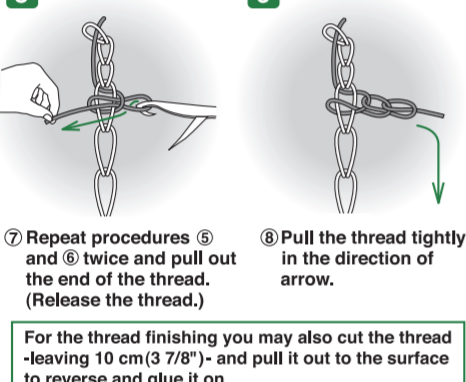
Ending the stitch



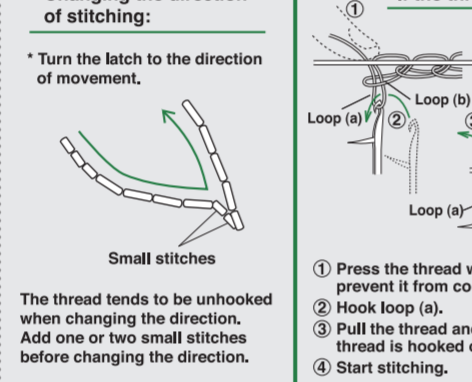
Sample of Beads Stitch



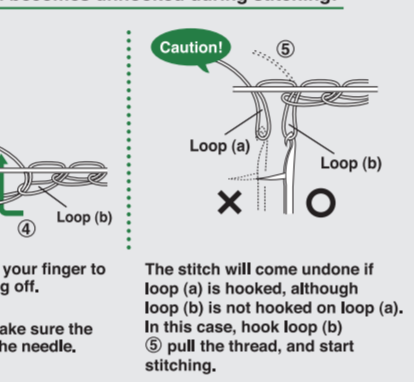
Changing the direction of stitching



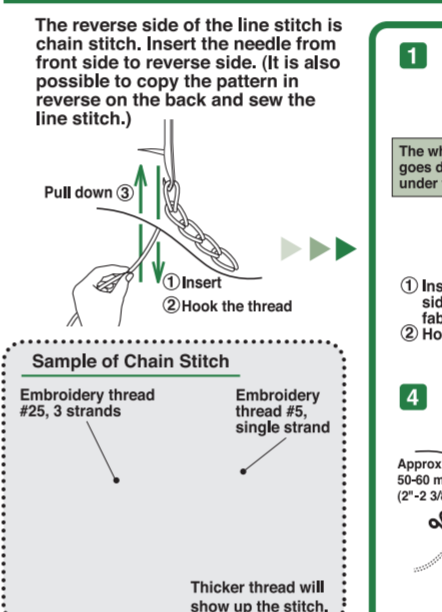
If the thread becomes unhooked during stitching



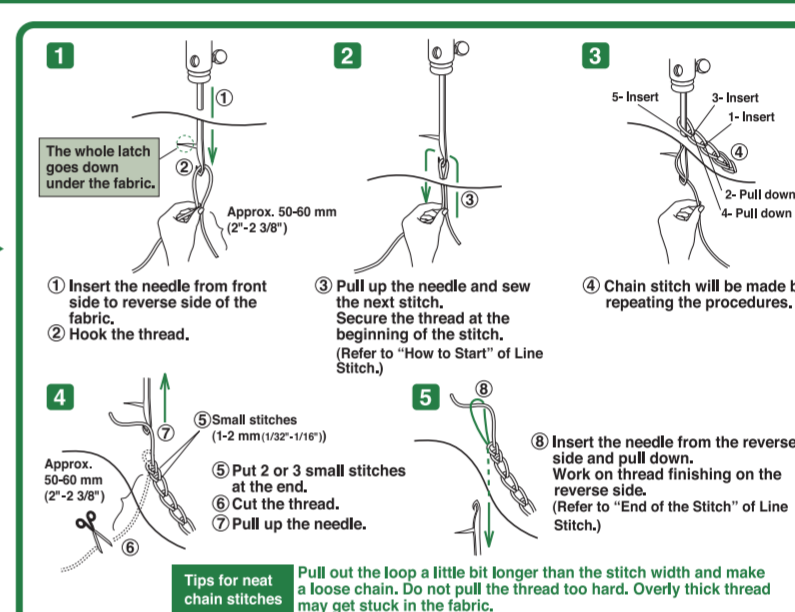
Applied stitch



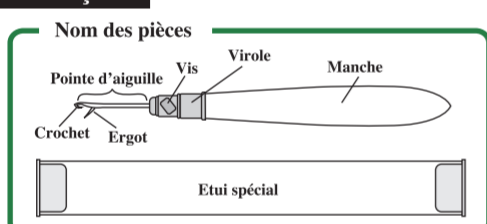
Sample of Chain Stitch



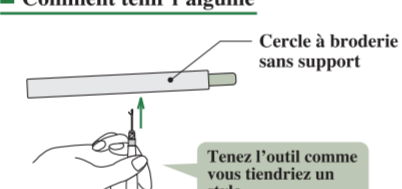
Chain Stitch



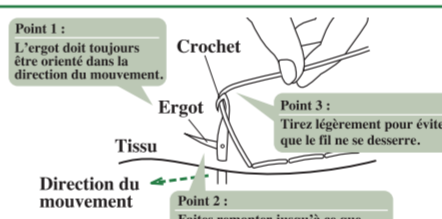
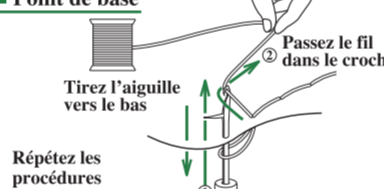
FRANÇAIS



Comment tenir l'aiguille



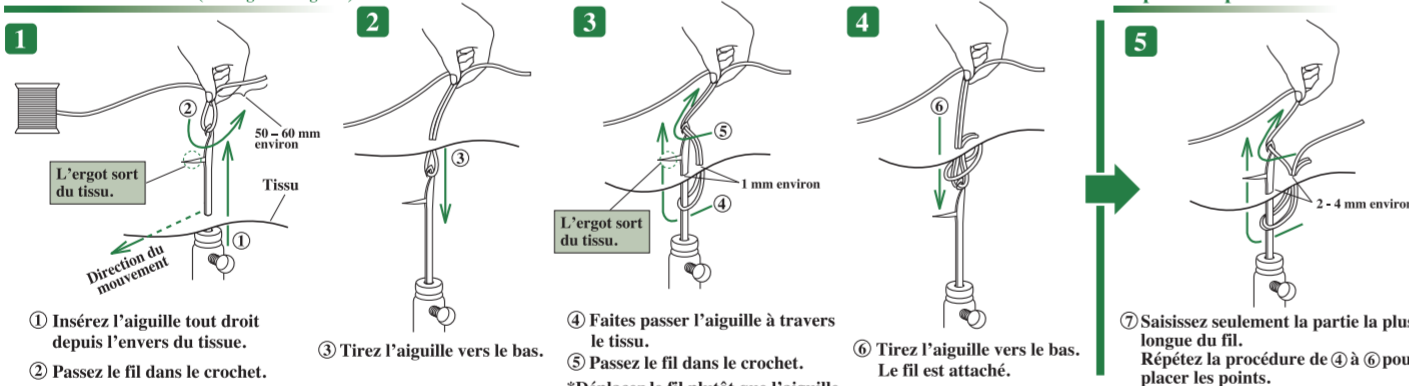
Point de base



Point 1: Faites pointer l'ergot dans la direction du mouvement afin que le fil ne se décroche pas.
Point 2: Si l'ergot entier n'est pas tiré au-dessus du tissu, le crochet se prendra dans le tissu.
Point 3: Si l'ergot se prend dans le tissu, le sortir soigneusement et le faire entrer de nouveau. Ne pas forcer l'entrée ou la sortie de l'aiguille. Cela risquerait de la briser.
 * Si le fil devient lâche, le crochet aura tendance à se prendre dans la boucle du point précédent.

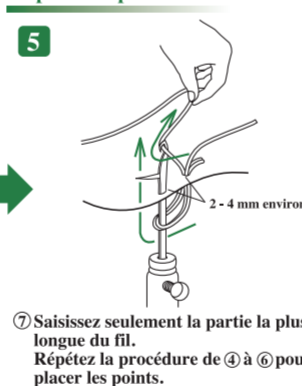
Comment faire les points de base

Comment commencer (Enfilage de l'aiguille)



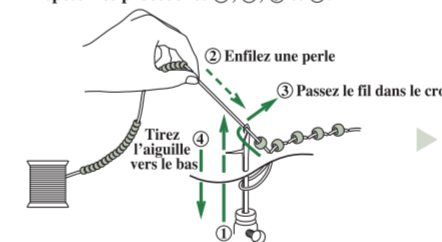
Point en continu

Répétez les points

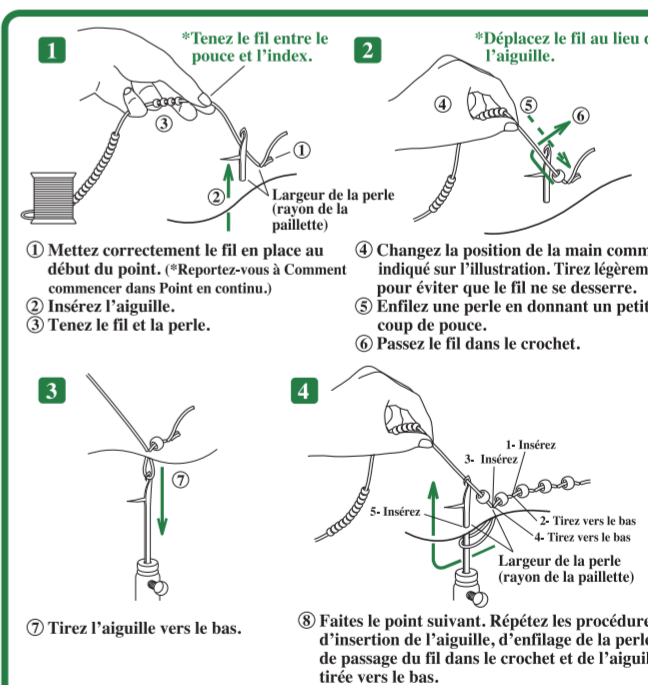


Application des perles et des paillettes

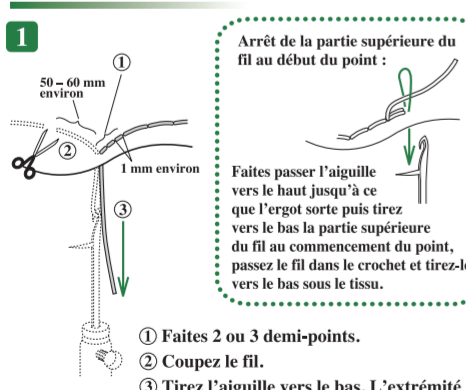
Tout en faisant des points de ligne de base, enfiler les perles et attachez-les. Préparez les perles enfilées et répétez les procédures ①, ②, ③ et ④.



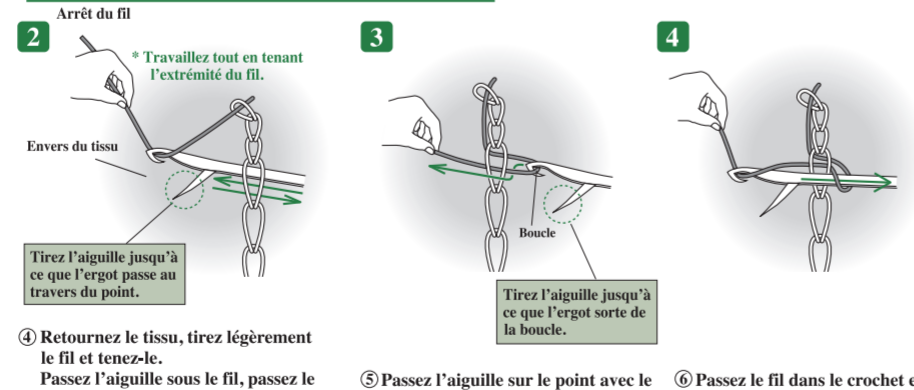
Points pour perles



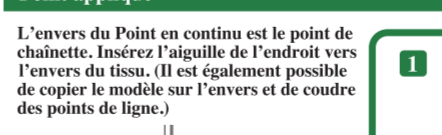
Pour arrêter un point



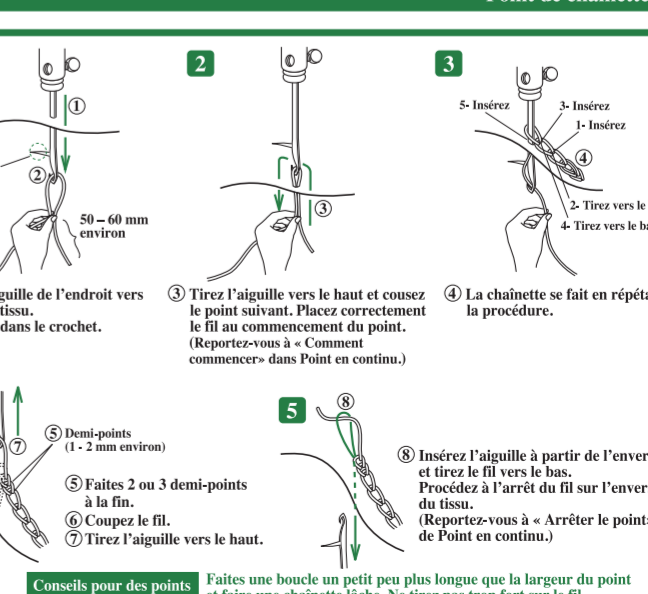
À partir de maintenant, travaillez sur l'envers du tissu.



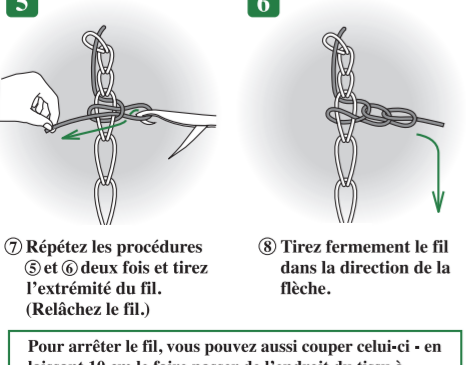
Point appliqué



Point de chaînette



Changement de la direction dans laquelle vous travaillez



Si le fil se défait du crochet pendant que vous cousez

