



CALI CRUSHER

HOMEGROWN

THE *Designer* FOUR WAY QUICKLOCK GRINDER



CCH-2-G
FOUR PIECE **STANDARD 2.35"**



INDESTRUCTABLE **TEETH**
DUAL-ACTION
RADIAL-CUT

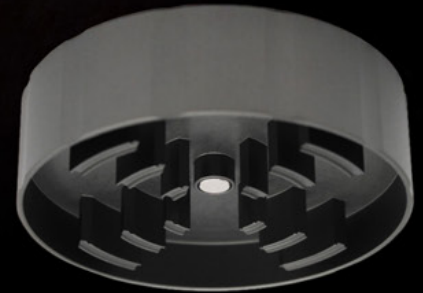
MORE LOADING **SPACE**

POWERFUL NEODYMIUM
RARE-EARTH **MAGNETS**

PATENTED FOUR WAY **QUICKLOCK**
QUARTER TURN LOCK & RELEASE
NEVER CROSS THREAD AGAIN

210 COUNT MICRON **SCREEN**
EASY TO CLEAN & UPGRADE
3/32" HEX KEY REMOVAL

FIRST OF ITS KIND
ROUNDED CATCH CHAMBER
SEAMLESS **POLLEN** COLLECTION



MADE IN SAN DIEGO, CA **GRIND IN STYLE**



CALI CRUSHER

HOMEGROWN

THE *Designer* FOUR WAY QUICKLOCK GRINDER



CCH-5-AQ
FOUR PIECE POCKET 1.85"

LARGER DROP HOLES
NO OBSTRUCTION

INDESTRUCTIBLE TEETH
DUAL-ACTION
RADIAL-CUT

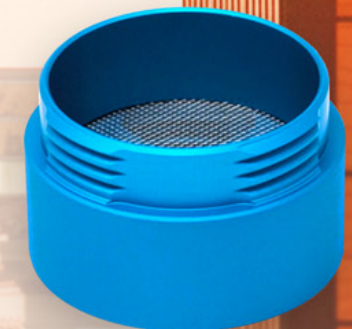
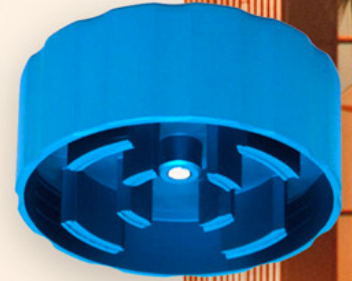
POWERFUL NEODYMIUM
RARE-EARTH MAGNETS

PATENTED FOUR WAY QUICKLOCK
QUARTER TURN LOCK & RELEASE

CONVENIENT POCKET SIZE
GREAT ON THE GO

SEAMLESS POLLEN COLLECTION
ROUNDED CATCH CHAMBER
FIRST OF ITS KIND

SCRATCH RESISTANT
BEAD BLASTED FINISH



MADE IN SAN DIEGO, CA **GRIND IN STYLE**

HOMEGROWN



CCH-2-B

Original Four Way Quicklock Technology * Grooved Edges
Ultrasonically Cleansed Aerospace Medical Grade Aluminum
Removable Micron Screen to Upgrade, Repair & Clean
Patented Dual action Radial Cut Teeth for Maximum Shred
Rounded Pollen Chamber * Guitar Pick Scraper Inside

STANDARD 2.35"



CCH-2-AQ



CCH-2-B



CCH-2-BL



CCH-2-G



CCH-2-GL



CCH-2-GRN



CCH-2-O



CCH-2-P



CCH-2-PK



CCH-2-R

POCKET 1.85"



CCH-5-B



CCH-5-AQ



CCH-5-B



CCH-5-GRN



CCH-5-P



CCH-5-R

HOMEGROWN



XL 4.7"



CCH-XL-B

- Ultrasonically Cleansed Aerospace Aluminum
- Original Four Way Quicklock Technology
- Patented Dual action Radial Cut Teeth
- Industrial Sized Rounded Chamber

Store Over an Ounce Ground
182 Oversized Drop Holes
4.7" x 2.3"



HOMEGROWN

JAR HEAD MASON JAR GRINDER

Ultrasonically Cleansed Aerospace Aluminum

Pint Size Regular Mouth Ball Mason Jar Included

Works with most Regular Mouth (2 3/8") Mason Jars

Canning Disk Seals Ground Product

Magnetic Canning Disk Storage on Top

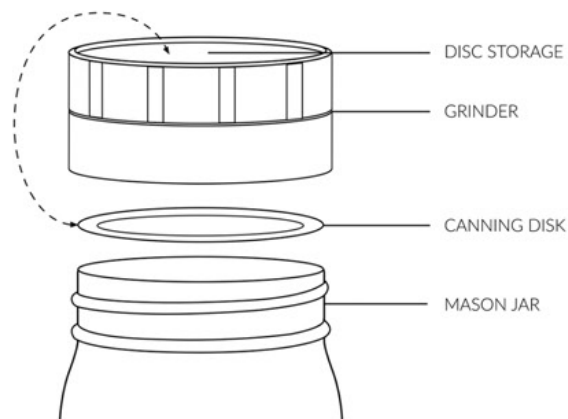
Patented Dual action Radial Cut Teeth

Store Over Two Ounces Ground

For More Storage, Upgrade to a Quart Size Jar!



CCH-JH-B



MADE IN SAN DIEGO, CA

 CALI CRUSHER 2022



CALI CRUSHER

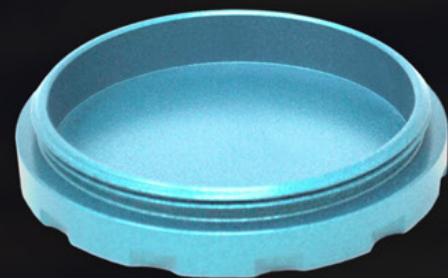
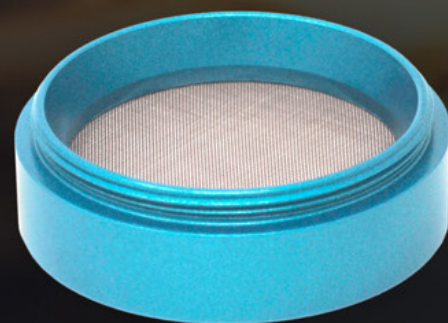
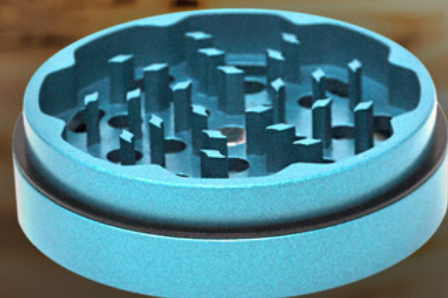
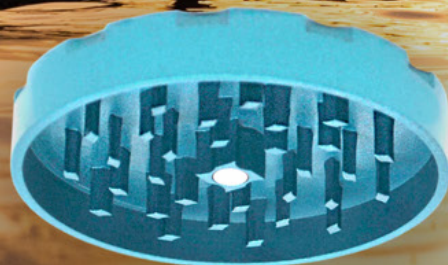
OG SLICK

THE *Non-Stick* GRINDER

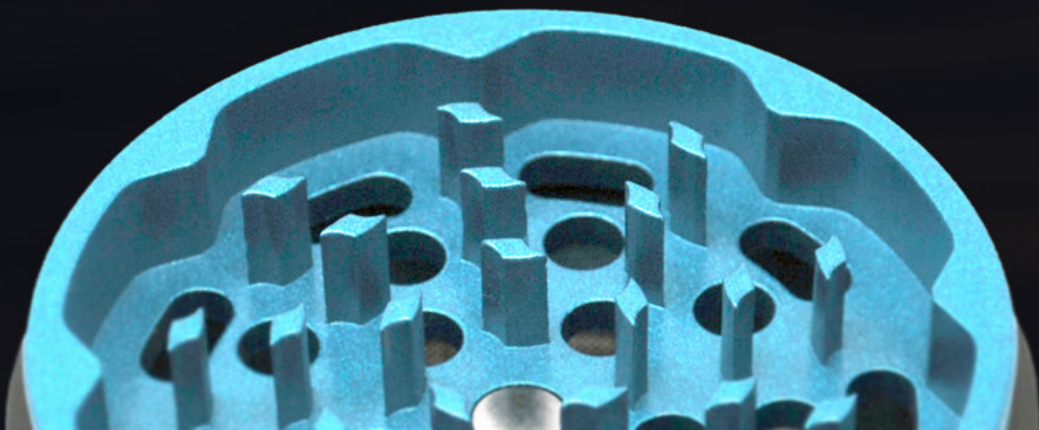


CC-7-SLK-TL

TEAL 2.5" OG SLICK



STYLISH NON-STICK CERAMIC FINISH
AIRCRAFT-GRADE BILLET ALUMINUM
BETTER CONTROL ★ PRECISION GRIND
ULTRA SMOOTH TWISTING MOTION
EASY TO CLEAN DIAMOND CUT TEETH



CALI CRUSHER GRIND IN STYLE

THE OG SLICK



Non-Stick Ceramic Coated
Stainless Steel Micron Screen
Pollen Scraper Included
Smooth Silent Grind
Textured Lid for Grip

2" FOUR PIECE



2.5" FOUR PIECE





CALI CRUSHER

TRUE O.G.

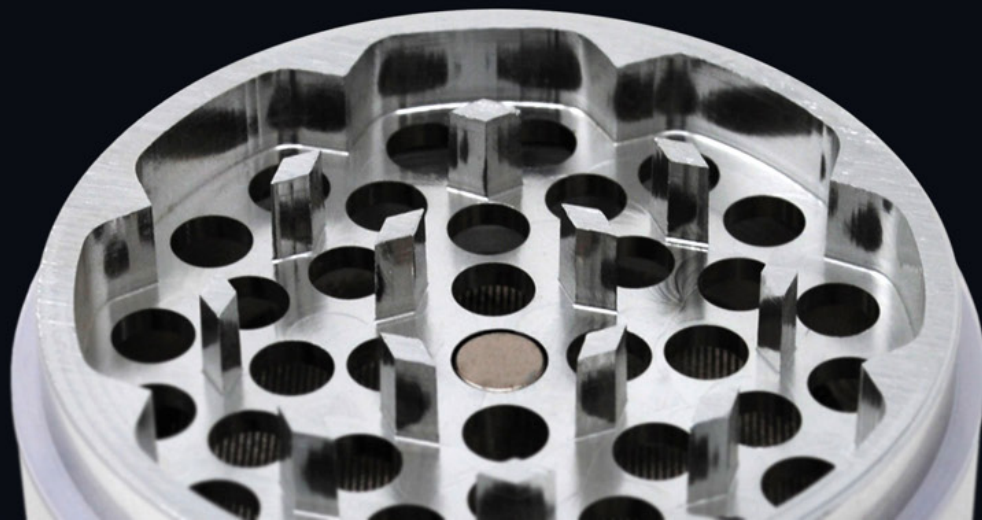
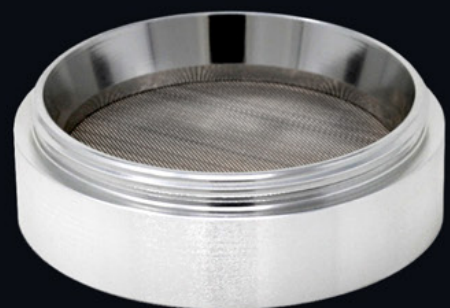
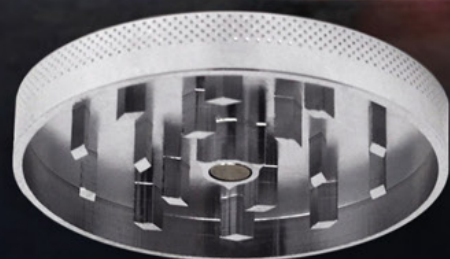
THE *Original* GRINDER



CC-7-S

SILVER 2.5" O.G. HARDTOP

The affordable favorite since 2010. Unlike most imports, our CNC Machined Grinders are one solid piece of aerospace aluminum. The blade plate will never loosen and spin in place. Designed with diamond cut teeth to crush herbs into a blended fluffy consistency. The O.G. is the best grinder on the market at this price point.



CALI CRUSHER GRIND IN STYLE

OG HARDTOP



CC-7-R

CNC Machined Aluminum • Textured Lid for Grip
Diamond Cut Blades • Stainless Micron Screen
Pollen Catch Chamber • Pollen Scraper Included

2" TWO PIECE



CC-2-B



CC-2-GL



CC-2-P

2" FOUR PIECE



CC-6-B



CC-6-BL



CC-6-GL



CC-6-GRN



CC-6-P



CC-6-PK



CC-6-R



CC-6-S

2.5" FOUR PIECE



CC-7-B



CC-7-BL



CC-7-GL



CC-7-GRN



CC-7-P



CC-7-PK



CC-7-R



CC-7-S

3" FOUR PIECE



CC-10-B



O.G. HARDTOP

PRE-ROLL GRINDER



- 2 Piece O.G. Grinder
- Diamond Cut Blades
- Packing Funnel
- Transparent Cone Holder
- Joint Release Lift

- Silicone Joint Tip
- Silicone Tapping Base
- Separates for Cleaning
- Fits Most KING Papers and Pre-rolls

CC-6-PRG





CALI CRUSHER

POWDER COATED

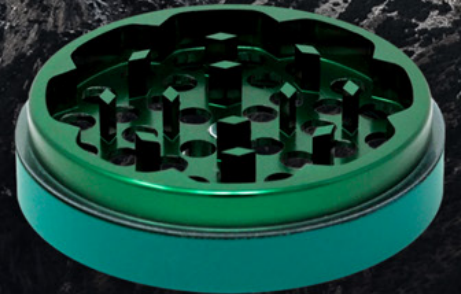
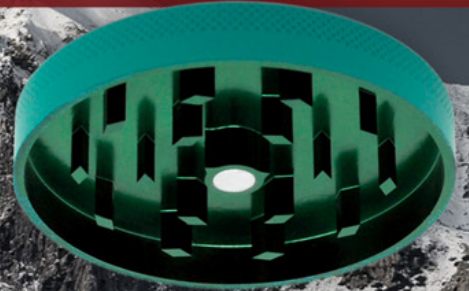
THE *Original* GRINDER ★ MATTE FINISH



CC-7-PC-GRN

GREEN 2.5" O.G. P.C. HARDTOP

MATTE-RUBBERIZED POWDER COAT FINISH
O.G. CNC MACHINED AEROSPACE ALUMINUM
BLADE PLATE WILL NEVER LOOSEN OR SPIN
DIAMOND CUT TEETH ★ NO SLIP HANDLING



CALI CRUSHER GRIND IN STYLE

MATTE FINISH

Rubberized Powder Coat Finish
Stainless Steel Micron Screen
Pollen Scraper Included
Pollen Catch Chamber
Textured Lid for Grip



CC-7-PC-B

2" FOUR PIECE



CC-6-PC-B



CC-6-PC-BL



CC-6-PC-GRN



CC-6-PC-R



CC-6-PC-S

2.5" FOUR PIECE



CC-7-PC-B



CC-7-PC-BL



CC-7-PC-GRN



CC-7-PC-R



CC-7-PC-S

ECO HEMP

BIODEGRADABLE GRINDER



CC-2-HMP-W



MADE OF ALL NATURAL HEMP

LASER ETCHED LOGOS

BIODEGRADABLE

GROOVED EDGE

BPA FREE

2.15" x 1" (2 pc)

2.15" x 2" (4 pc)



CC-4-HMP-W



HOMEGROWN® DUGOUT

THE DESIGNER DUGOUT

6061 AEROSPACE ALUMINUM

SCRATCH RESISTANT MATTE FINISH

POLYCARBONATE SUPPLY WINDOW

FIGURE 8 HANDHELD DESIGN

GRINDING BAT

EASY GLIDE LID

DIMENSIONS: 4.25" X 2" X 0.75"



CCH-DUG-B



CCH-DUG-BL



CCH-DUG-R



THE TRAVELER[®]

PORTABLE CHILLUM



16 mm GLASS CHILLUM
6061 ALUMINUM SHELL
SCRATCH RESISTANT MATTE FINISH
HANDS FREE SILICONE MOUTHPIECE
MAGNETIC LID
DIMENSIONS: 1" X 4.75"



CC-TRVL16-AQ



CC-TRVL16-B



CC-TRVL16-GRN



CC-TRVL16-G



CC-TRVL16-P





CALI CRUSHER

STORAGE

Smell Proof

WEATHER RESISTANT

LOCKING



10" COMBO POUCH

6" CALI POUCH



ADVENTURE SLING



GRINDER CASE



CALI CRUSHER **GRIND IN STYLE**

CALI ADVENTURE SLING®

100% SMELL PROOF
ACTIVATED CARBON LINING
WEATHER RESISTANT
COMBINATION LOCK
CONVERTIBLE SHOULDER STRAPS
ADJUSTABLE STRAP LENGTHS
CLASSIC HAUL LOOP
4 ZIPPERED COMPARTMENTS
BOTTLE HOLDER
INNER SLEEVE
HIDDEN PHONE POCKET
DIMENSIONS: 15.5" X 10" X 7"



CC-BP-SLNG-B.W



CC-BP-SLNG-OLVGRN



CC-BP-SLNG-B



CC-BP-SLNG-B.BL



CC-BP-SLNG-B.GRN



CC-BP-SLNG-B.P



CALI BACKPACK®

- 100% SMELL PROOF
- DOUBLE ZIPPER SEAL
- ACTIVATED CARBON LINING
- WEATHER RESISTANT
- COMBINATION LOCK
- PADDED SHOULDER STRAPS
- CLASSIC HAUL LOOP
- ADJUSTABLE SIDE STRAPS
- 3 ZIPPERED COMPARTMENTS
- 2 SIDE POCKETS
- LAPTOP INNER SLEEVE
- FRONT POCKET SLEEVE
- DIMENSIONS: 18" X 13" X 8"



CC-BP-B.W



CC-BP-GRN



DOUBLE ZIPPER SEAL



CC-BP-B



CC-BP-B.BL



CC-BP-B.GRN



CC-BP-B.P



CC-BP-B.W



FRONT ZIPPER POCKET



CC-BP-B.O

ROLL TOP BACKPACK



CC-BP-RO-B

- 100% SMELL PROOF
- WATERPROOF ZIPPER SEAL
- ACTIVATED CARBON
- THERMAL LINING
- WEATHER RESISTANT FABRIC
- LAPTOP INNER SLEEVE
- 2 INTERIOR MESH POCKETS
- SMELL PROOF FRONT POCKET
- CLASSIC HAUL LOOP (IMITATION LEATHER)
- PADDED ROLL TOP W/ CARABINER LOOPS
- ADJUSTABLE STRAPS W/ PLASTIC BUCKLES
- DIMENSIONS: 18" (24" UNROLLED) X 12" X 4"



CC-BP-RO-B.BL



CC-BP-RO-B.GRN



CC-BP-RO-G



CC-BP-RO-B.P



CC-BP-RO-B.W



CC-BP-RO-GRN



CALI FANNY PACK®

100% SMELL PROOF

ACTIVATED CARBON LINING

WEATHER RESISTANT

COMBINATION LOCK

2 MAIN ZIPPER COMPARTMENTS

1 HIDDEN INNER ZIPPER COMPARTMENT

MESH OUTER FRONT POCKET

ADJUSTABLE BUCKLE (ONE SIZE FITS ALL)

DIMENSIONS: 11" X 5" X 5"



CC-FP-B.W



CC-FP-B



CC-FP-B.BL



CC-FP-B.GRN



CC-FP-B.O



CC-FP-B.P



BUCKLE STRAP

COMBO POUCH® 8" x 5"

- 100% SMELL PROOF
- ACTIVATED CARBON LINING
- EXTRA CUSHIONED INTERIOR
- WEATHER RESISTANT
- COMBINATION LOCK
- VELCRO POCKET (FRONT)
- MESH POCKET (BACK)
- ELASTIC POCKET (INSIDE)
- SIDE RELEASE BUCKLE
- DIMENSIONS: 8" X 5" X 2"



CC-CP-8-OLVGRN



CC-CP-8-B



CC-CP-8-B.BL



CC-CP-8-B.GRN



CC-CP-8-B.P



CC-CP-8-B.W

COMBO POUCH® 10" x 7"

100% SMELL PROOF

ACTIVATED CARBON LINING

EXTRA CUSHIONED INTERIOR

WEATHER RESISTANT

COMBINATION LOCK

VELCRO POCKET (FRONT)

MESH POCKET (BACK)

ELASTIC POCKET (INSIDE)

SIDE RELEASE BUCKLE

DIMENSIONS: 10" X 7" X 2"



CC-CP-10-OLVGRN



CC-CP-10-B



CC-CP-10-B.BL



CC-CP-10-B.GRN



CC-CP-10-B.P



CC-CP-10-B.W

CALI POUCH® 6" x 6"

100% SMELL PROOF
ACTIVATED CARBON LINING
WEATHER RESISTANT
KEY LOCK ZIPPER (2 KEYS)
PORTABLE, PADDED DESIGN
HEIGHT: 6" WIDTH: 6"



CC-P-6-OLVGRN



CC-P-6-B



CC-P-6-B.BL



CC-P-6-B.GRN



CC-P-6-B.O



CC-P-6-B.P



CC-P-6-B.W



CC-P-6-G

KEY LOCK



CALI POUCH® 11" x 6"

100% SMELL PROOF
ACTIVATED CARBON LINING
WEATHER RESISTANT
KEY LOCK ZIPPER (2 KEYS)
PADDED DESIGN
PORTABLE
HEIGHT: 6"
WIDTH: 11"



CC-P-11-B



CC-P-11-B.BL



CC-P-11-OLVGRN



CC-P-11-B.P



CC-P-11-B.O



CC-P-11-B.GRN



CC-P-11-B.W



CC-P-11-G

GRINDER CASE

100% SMELL PROOF
ACTIVATED CARBON LINING
WEATHER RESISTANT
KEY LOCK ZIPPER (2 KEYS)
PORTABLE, PADDED DESIGN
FITS STANDARD HOMEGROWN®
FITS MOST 2.5" GRINDERS
DIMENSIONS (OUTSIDE): 3" X 3.5"
DIMENSIONS (INSIDE): 2.6" X 3"



CC-GC-B.W



CC-GC-B



CC-GC-B.BL



CC-GC-B.GRN



CC-GC-B.O



CC-GC-B.P

CALI SOFT CASE® SMALL



CC-SC-SM-OLVGRN

100% SMELL PROOF
ACTIVATED CARBON LINING
WEATHER RESISTANT
COMBINATION LOCK
3 VELCRO DIVIDERS
(4 COMPARTMENTS)
4 MESH STORAGE POCKETS
PORTABLE, PADDED DESIGN
DIMENSIONS: 9.5" X 4" X 3.5"



CC-SC-SM-G



CC-SC-SM-B



CC-SC-SM-B.BL



CC-SC-SM-B.GRN



CC-SC-SM-B.O



CC-SC-SM-B.P



CC-SC-SM-B.W



CALI SOFT CASE® LARGE



100% SMELL PROOF
ACTIVATED CARBON LINING
WEATHER RESISTANT
COMBINATION LOCK
3 VELCRO DIVIDERS
(4 COMPARTMENTS)
4 MESH STORAGE POCKETS
2 HANDLES
PORTABLE, PADDED DESIGN
DIMENSIONS: 9" X 7" X 3.5"



CC-SC-LG-G



CC-SC-LG-OLVGRN



CC-SC-LG-B



CC-SC-LG-B.BL



CC-SC-LG-B.GRN



CC-SC-LG-B.O



CC-SC-LG-B.P



CC-SC-LG-B.W

CALI SOFT CASE® XL



- 100% SMELL PROOF
- ACTIVATED CARBON LINING
- WEATHER RESISTANT
- COMBINATION LOCK
- 7 VELCRO DIVIDERS
(8 COMPARTMENTS)
- 4 MESH STORAGE POCKETS
- 2 HANDLES
- PORTABLE, PADDED DESIGN
- DIMENSIONS: 12" X 10" X 4"



CC-SC-XL-B



CC-SC-XL-B.W





CALI SHELL® HARD CASE

100% SMELL PROOF
PROTECTIVE SHELL
HARD EXTERIOR
REMOVABLE FOAM
PADDED INTERIOR
FOUR ELASTIC STRAPS
LENGTH: 7.5"
DIAMETER: 3"



CC-SH-7.5-B



CALI DUFFLE BAG® 12"



CC-DB-12-B.W



100% SMELL PROOF
ACTIVATED CARBON LINING
WEATHER RESISTANT
3 STORAGE COMPARTMENTS
COMBINATION LOCK
THICK PADDING
GROOVED HANDLE
ELASTIC CARGO STRAPS
SHOULDER STRAP
EXTERIOR: 12" X 6" X 8"
INTERIOR: 11" X 5" X 7"



CC-DB-12-B



CC-DB-12-B.BL



CC-DB-12-B.O



CC-DB-12-B.P



CC-DB-12-B.GRN



CALI DUFFLE BAG® 16"



CC-DB-16-B.W

- 100% SMELL PROOF
- ACTIVATED CARBON LINING
- WEATHER RESISTANT
- 3 STORAGE COMPARTMENTS
- COMBINATION LOCK
- THICK PADDING
- GROOVED HANDLE
- ELASTIC CARGO STRAPS
- SHOULDER STRAP
- EXTERIOR: 16" X 6" X 8"
- INTERIOR: 15" X 5" X 7"



CC-DB-16-B.BL



CC-DB-16-B



CC-DB-16-B.GRN



CC-DB-16-B.O



CC-DB-16-B.P

