

PRODUCT REVIEW

Up the Wall

Color is experiencing a renaissance in kitchen and bath design, with bright and dramatic hues making statements on everything from cabinets to appliances. Neutral elements in the space yield to these bold choices, providing the ideal backdrop to let the stars of the room shine.

Tile is becoming an increasingly critical piece of the design, as it can perform as both the quieter, secondary player or the center of attention. Today's tile choices range from subway and large-format rectangles in neutral and watery hues to irregular geometrics with unique finishes and painted patterns.

Texture and shimmer are major players right now, with irregular surfaces adding interest to designs. Classic looks such as marble are still a go-to, as well, often receiving a modern update with an interesting shape or pairing with other material.

On these three pages, *Kitchen & Bath Design News* highlights some of the newest tile trends on the market.

1. A fresh take on a concrete look, **Marazzi's Persuade** features a calming linear grain on a soft plaster aesthetic. The glazed porcelain is available in three neutral colors and three rectangular sizes applicable for floors and walls. The design can be elevated with a brickjoint mosaic for added visual texture.

Circle No. 210 on Product Card

2. **Metal Coat Tile and Signs** offers custom handcrafted products, available in eight metals and six finishes, including tiles, liners, chair rails, decorative accents, onlays and corbels. The tile and natural stone mosaics can be customized for backsplashes, showers, accent walls and fireplace facades, and are available in styles ranging from contemporary to old world.

Circle No. 211 on Product Card

3. The new Village collection by **Equipe Ceramicas** combines contemporary metro tiles with New York underground spirit. Two rectangular shapes and an 8" x 8" square make up the line, which is available in 15 shades from soft pastels to vibrant hues.

Circle No. 212 on Product Card

4. Graphite, a new ceramic tile series from **Lunada Bay Tile**, features Black Iron with Aggregate finish that emulates the look of charcoal pencil. Designed to be a foil to high-shine collections, the tile works with a dark grout for subtlety or a light-colored grout to enhance the pattern.

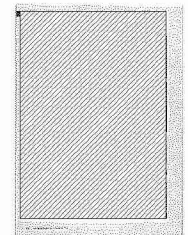
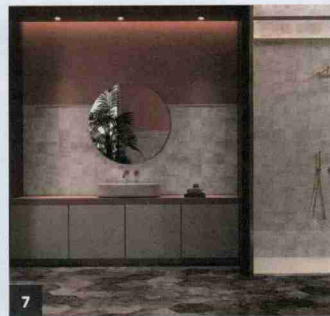
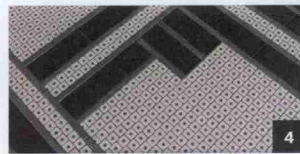
Circle No. 213 on Product Card

5. Made in Italy, Terrazzo is a rectified color body porcelain with a flecked pattern that gives the material a vintage feel. Available from **Arizona Tile**, Terrazzo is offered in five colors and three sizes.

Circle No. 214 on Product Card

6. Béatrice, a waterjet mosaic art nouveau lily done in Marcasite and Absolute White jewel glass, is part of the Liliane Collection by designer Caroline Beaupere for **New Ravenna**. Beaupere's memories of summers spent on the French Riviera inspired the nine mosaics in the collection, which are handcrafted in natural stone and glass with metal accents.

Circle No. 215 on Product Card

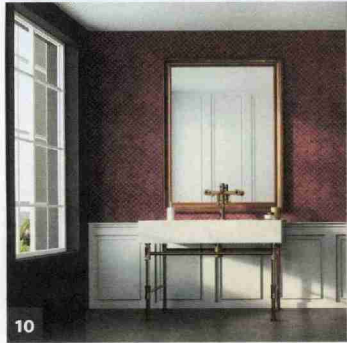




8



9



10



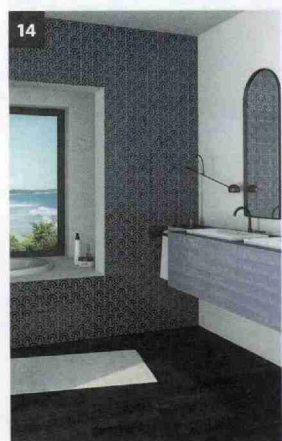
11



12



13



14



15



16

7. Encompassing the latest trends of graphic prints, geometric shapes and bold color, the Amazonian collection from **Colorker** is full of vibrant details. The latest addition to the ZYX collection, Amazonia displays tropical influences and muted tones in both square and hexagonal porcelain.
 Circle No. 216 on Product Card

8. Bianco Dolomite, a medium variation marble imported from Turkey by **MSI**, is available in both slabs and tiles. The patterns and tones of this low-contrast blend of arctic white and pale gray works for wall and backsplash tiles as well as flooring.
 Circle No. 217 on Product Card

9. A twist on the classic subway tile is delivered in **AKDO's** new Luster Collection. With a subtly iridescent glaze, this ceramic tile offers a uniquely marine aesthetic reminiscent of rolling ocean waves and glistening seashells, notes the company. The tile is available in Oyster, Coastal and Seal Gray in a pearl finish.
 Circle No. 218 on Product Card

10. The Revalia ceramic mosaic collection by **Daltile** features geometric shapes and eclectic colors. Geometrics include unusual figures such as kaleidoscope and fan shapes, while Ripple, Bevel, Picket and Structural shapes add a linear design. Vibrant colors are offered in select shapes, with neutral color selections of white, beige and gray also featured.
 Circle No. 219 on Product Card

11. The Piastrella collection by **Natucer** brings back the basics with impactful designs and finishes using the subway tile format. The collection takes the traditional subway tiles one step further with vibrant colors, irregular borders, mixed finishes, intricate designs and bold reliefs.
 Circle No. 220 on Product Card

12. Inspired by ancient materials, brass, copper and glass, **Devon&Devon's** Flora Tiles glazed gres porcelain tiles are available in four color versions: White Musk, Black Ground, Blu Spring and Brown Garden. The Clover, Freesia, Petunia and Primrose series are characterized by metal reflections, oxidations and chromatic passages.
 Circle No. 221 on Product Card

13. The elegantly drawn out subway tiles of the Dunes series from **Island Stone** are sculpted with an offset angled surface, forming a flow of connected ridges reminiscent of wind-swept sand dunes. The addition of two new colors - Crystal White and Typhoon Grey - rounds out the line's range, which also includes Sandstone Mint and Sandstone Ocean.
 Circle No. 222 on Product Card

14. **Vives** brings charismatic personality to walls with Hanami. This wall tile collection blends a timeless style with modern hues for a fresh perspective. The tile is available in Ivory, Beige, Pink, Grey, Cloud and Mint.
 Circle No. 223 on Product Card

15. **Heath Ceramics'** Dual Glaze Triangles are a tribute to and evolution of Edith Heath's love of experimentation with glaze formulas and applications. A masking technique used during the glazing process creates four different color blocked tiles that can be assembled into infinite patterns.
 Circle No. 224 on Product Card

16. Available from **Garden State Tile**, Arkstone Italy delivers four ceramic tile collections to the U.S. - Estate, Marzo, Optic and Origins. Origins (shown), which unites concrete, wood and metal, includes 4"x8" wall tiles available in three neutral colorways with a heavy shade variation and a metallic look.
 Circle No. 225 on Product Card

17. Inalco introduces Senda, a collection that features light gray brush-strokes on a gentle stone-like relief. The tile delivers a delicate and versatile look the provides a neutral yet dramatic background.
 Circle No. 226 on Product Card



18. For the centennial year of the Bauhaus, Artistic Tile has teamed with New York-based designer Alison Rose to launch a new modern tile collection. Highlighting the movement's juxtaposition of geometric patterns, the collection uses some of the finest classical marbles still available, such as Bianco Carrara, Vanilla Onyx and Verde Aurora, the company notes.
 Circle No. 227 on Product Card



19. Crossville's I Naturali porcelain tile panels deliver the look of premium marble in a high-performance surface. The panels have outer dimensions of nearly 3'x9' yet are only 3+mm in thickness, creating an almost seamless application that works well in wet areas, the company emphasizes.
 Circle No. 228 on Product Card



20. Inspired by the rich decorative effect of French Art Deco, Walker Zanger's Biseau combines deep, rich colors with an accent of a mirrored finish. The back bevel with the mirror finish gives the illusion of dimension on a flat surface, creating a play of light, color and shapes.
 Circle No. 229 on Product Card

21. Soffitta from Ann Sacks is an unglazed porcelain tile from Spain that creates an edgy, industrial-inspired backdrop. The moody, shade-shifting palette of White, Grey or Black presents a neutral landscape to complement a wide range of contrasting colors. Soffitta is a dry-pressed tile that incorporates 44 percent pre-consumer recycled content.
 Circle No. 230 on Product Card



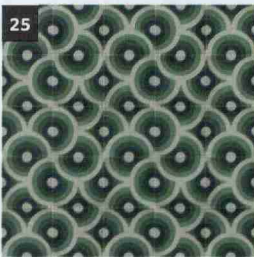
22. American Olean's Ideology merges the history of white marble with contemporary design. Updated larger sizes and distinctive geometric mosaic and decorative tile options allow for the insertion of marble veining into today's designs. The glazed porcelain products are available in three colors, including Vein-Cut Calacatta, Lasa and Carrara.
 Circle No. 231 on Product Card

23. Inspired by one of the last slabs of Angel Stone extracted from an exclusive quarry in the Italian Alps, Divinity is Florida Tile's interpretation of the beauty found in this rare sandstone. Four colors - Dawn, Dusk, Horizon and Mist - range from a mixture of soft, warm beiges, calm grays and taupes, to a dramatic cool dark gray. All feature monochromatic veining and distinct shade variations throughout.
 Circle No. 232 on Product Card



24. The Tonino Lamborghini Tiles & Style line from Tile Doctor features 14 distinctive ceramic tile collections - each inspired by prominent Formula One racing circuits. Designs range from geometrics to abstracts to organic looks. The collections incorporate elements linked to the world of luxury sports cars, such as carbon and steel, along with natural materials like wood and marble inlaid with copper and rose gold inserts.
 Circle No. 233 on Product Card

25. From the new Emma Gardner Group, part of Granada Tile's flagship Echo Collection of decorative cement tiles, comes the Byzantium tile design. The tiles come standard as an 8" square, with custom coloring and sizes available.
 Circle No. 234 on Product Card



26. The Gouache Collection from Nemo Tile + Stone generates a sense of fluidity with a gently applied watercolor effect, and each of the collection's tiles offers a soft undulating surface to create visual texture. The collection's designs are available in four light colorways and three mixed decos.
 Circle No. 235 on Product Card