



# QUIET DRAMA



Five outdated baths become soothing sanctuaries overflowing with functionality and style

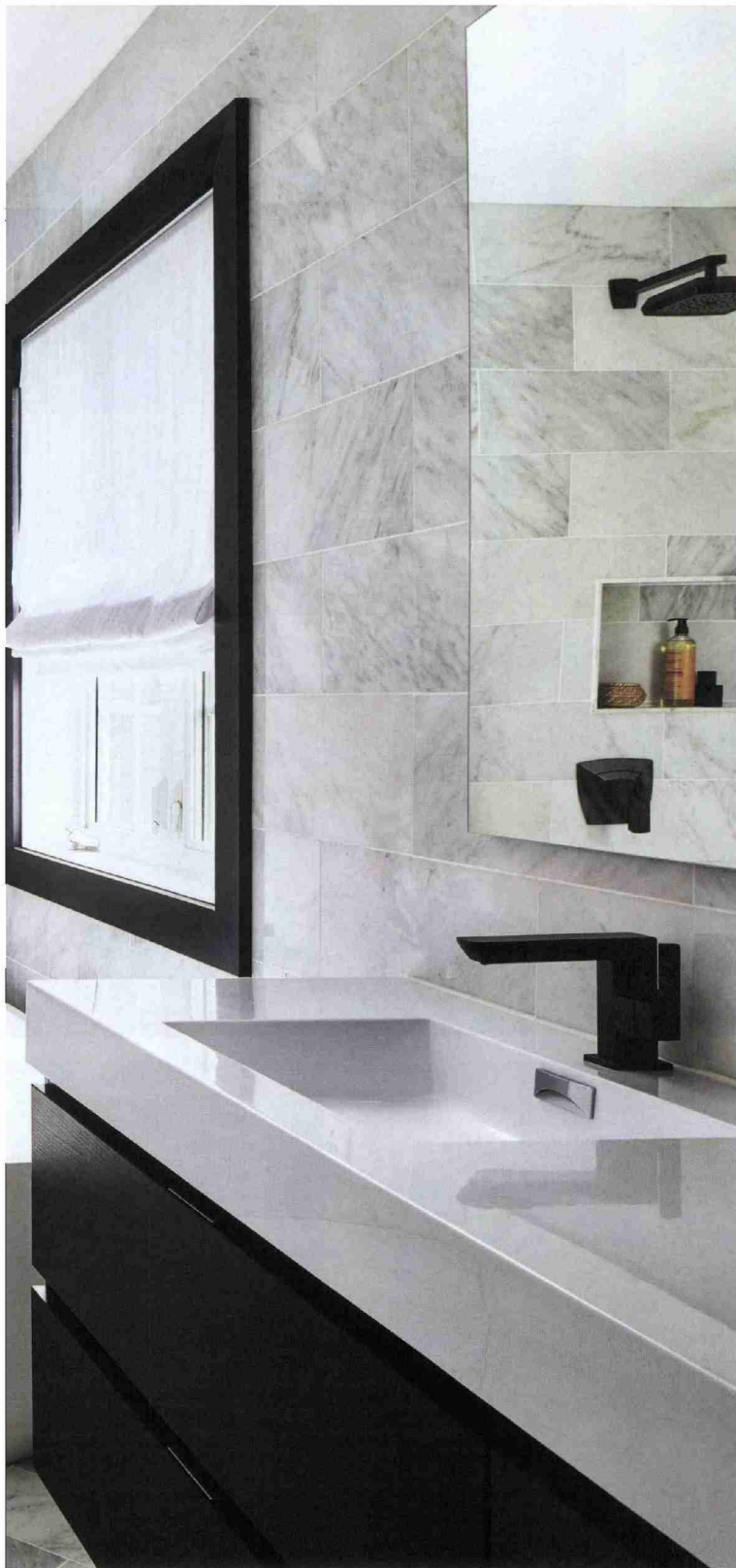
Text by SHARON JAFFE DAN

Page 2 of 12



**GET THE LOOK**

Floor & Wall Tile: [tileshop.com](http://tileshop.com).  
Tub: [badeoftusa.com](http://badeoftusa.com). Linen Roman  
Shade: [rh.com](http://rh.com). Matte-Black  
Plumbing Fixtures: [brizo.com](http://brizo.com).  
Vanity: MOB through [houzz.com](http://houzz.com).  
Medicine Cabinets: [robern.com](http://robern.com).  
Glass Fabricator: [dullesglass.com](http://dullesglass.com).  
Stool: [potterybarn.com](http://potterybarn.com).



## **Jennifer Wagner Schmidt revives a dated bath with a sleek, modern vibe**

**H**omeowners whose master bath was stuck in the 1980s were ready for a redo. Tired of its rarely used corner whirlpool tub and uninspiring beige tile, the Ashburn, Virginia, couple tapped designer Jennifer Wagner Schmidt to mastermind an overhaul. “They wanted to make it modern and functional,” recalls the designer, whose first strategy was to optimize real estate in the narrow, 11-foot-wide space.

A debate ensued over whether to include a tub in the new plan or to go solely with an oversized shower. When the tub won, Schmidt proposed a novel idea: create an open-concept, shower-and-bath area enclosed by a simple panel of glass on one side in lieu of a standard shower door. A niche for bath products is centered between dual matte-black rain-shower heads. A tiny dip in the floor contains water in the shower, where it disappears into a linear drain along the back wall.

A black-and-white palette reinforces the minimalist ideal. Applying the same large-format marble tile on the floor and walls created a uniform aesthetic; Schmidt installed it in a brick pattern on the walls and a chevron pattern on the floors for subtle contrast.

A floating vanity with a black wooden base and thick porcelain top provides plenty of storage; Schmidt selected the floating piece to preserve a sense of airiness. The new plan also tucked in a separate toilet room near the entry.

The owners love their luxe, modern bathroom. “They took the risk and it paid off,” says Schmidt. “It’s the kind of bathroom you’d see in a penthouse or high-end hotel.”

*Interior Design: Jennifer Wagner Schmidt,  
JWS Interiors, Ashburn, Virginia. Photography:  
Stacy Zarin Goldberg.*

## A design team pays homage to nature in a spa-like master bath

**A** Chevy Chase couple tapped designers Lauren Levant and Paul Bentham to revamp their master suite into a restful retreat. “They spend a lot of time traveling for business, so in a sense the goal was to create a world-class ‘hotel’ at home where they could recharge,” says Levant. After gutting the outdated master bath, the team implemented an aesthetic that would celebrate nature since the space overlooks lush park land.

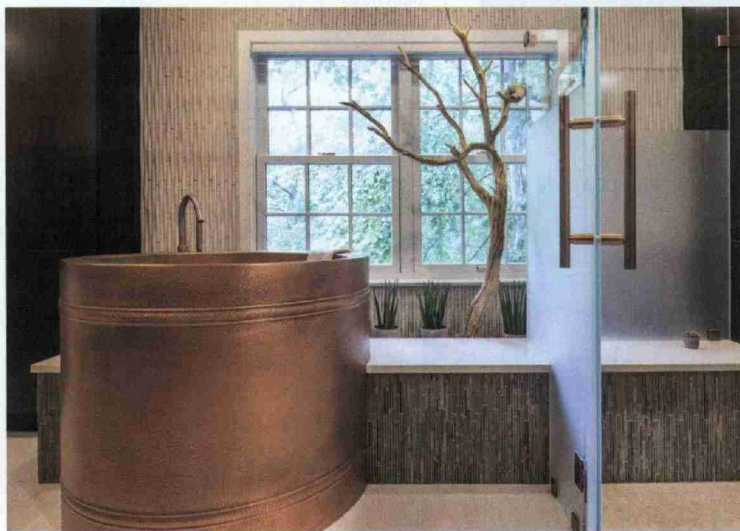
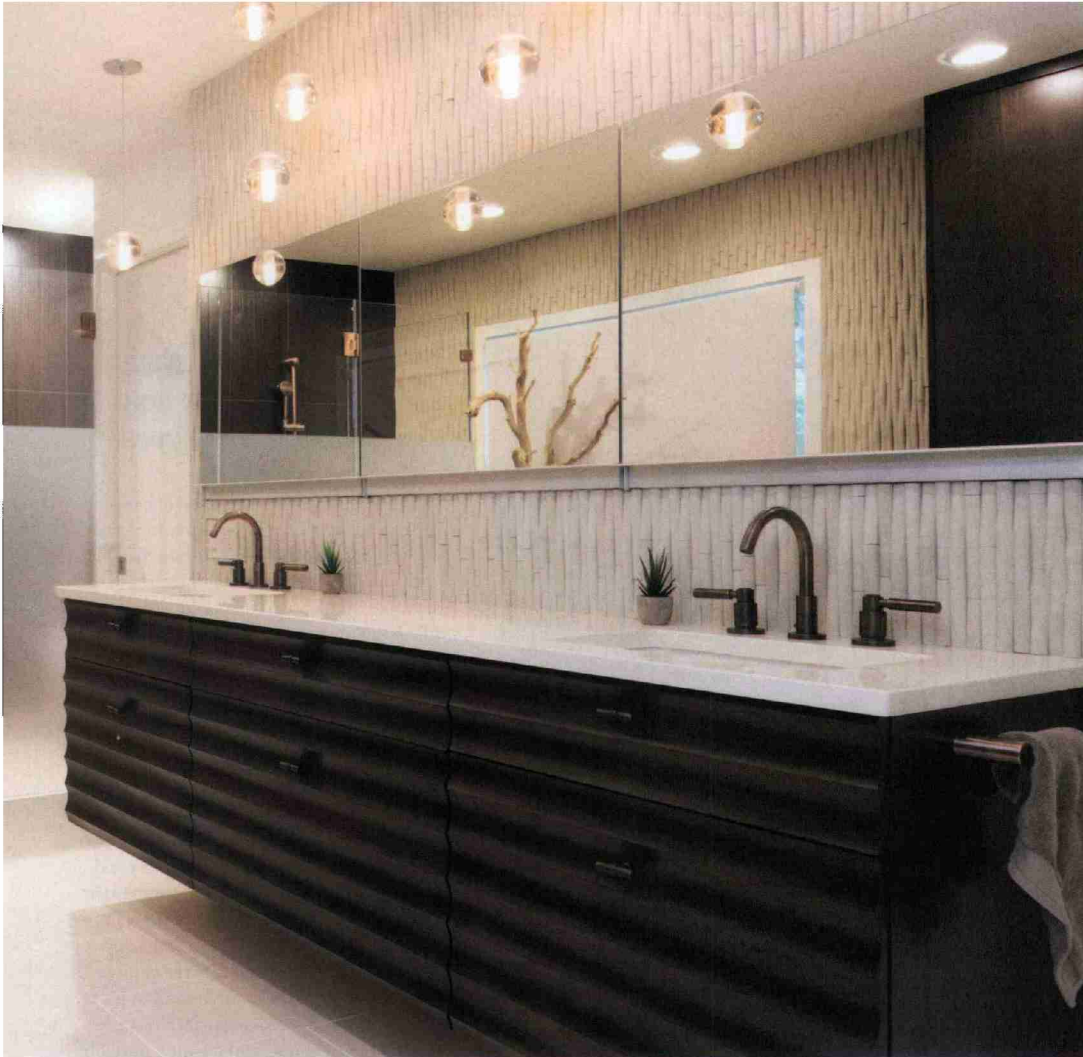
“We tried to make it feel open while incorporating as much storage as possible,” Levant explains. A floating vanity with generous drawers lines one wall, opposite built-in linen cabinets and a copper Japanese soaking tub. The tub was chosen for its minimal footprint as well as its therapeutic benefits. “It allows water to come up over your shoulders and soothe achy joints,” notes Levant. On the far wall, a shower and separate water closet await behind glass panels partially frosted for privacy.

An organic material palette reinforces the designers’ vision. Cast-concrete bamboo tile on the long walls is a subtle nod to the East and the owners’ collection of Asian artifacts. Natural-slate mosaic tile embellishes a shower column and the tub platform, which doubles as a bench that seamlessly extends into the shower. The designers also incorporated plants and a dried Manzanita tree—a sculpture shaped by desert winds.

Dark ceramic tile on the shower wall lends depth to the room. And, reflects Levant, “We chose a glass enclosure—rather than drywall—for the shower and water closet because it allows light and the views to continue into even the most private spaces.”

.....  
*Design: Lauren Levant, interior design; Paul Bentham, bath design, Lauren Levant Interior, Pittsburgh, Pennsylvania. Contractor: M. R. Thornton & Sons, Woodbine, Maryland. Photography: Ettore Mormile.*





**GET THE LOOK**

Tub: [signaturehardware.com](http://signaturehardware.com).  
Floor Tile: [porcelanosa-usa.com](http://porcelanosa-usa.com).  
Custom Vanity: [crystalcabinets.com](http://crystalcabinets.com).  
Concrete Wall Tile: [islandstone.com](http://islandstone.com).  
Silestone Countertop: [cosentino.com](http://cosentino.com).  
Stone Fabrication: [stoneandtileworld.com](http://stoneandtileworld.com).  
Plumbing Fixtures: [jaclo.com](http://jaclo.com)  
through [tsomerville.com](http://tsomerville.com).  
Hardware: [jaclo.com](http://jaclo.com). Shower Tile:  
[ceramichelea.it/en](http://ceramichelea.it/en). Glass Enclosure:  
[hutchisonglassandmirror.com](http://hutchisonglassandmirror.com).



## Case Design overhauls a dull bath with bold colors and textures

In an age when gray and white bathrooms are all the rage, Arlington clients asked Case Design to saturate theirs with color. As part of a major overhaul of a 1950s rambler, designers Allie Mann and Elle Hunter expanded both the tiny master bath used by the husband and an outdated hall bath (pictured on these pages) that's the domain of the wife.

"She is a color enthusiast and we wanted something that spoke to her," says Mann. Texture, balance and scale also came into play as Mann and Hunter created a refuge for this well-traveled client, who collects art from around the globe. The designers widened the space by two feet to accommodate a generous vanity and linen cabinet; a sizable shower took the place of a tub and a new toilet is tucked away opposite the vanity.

At first glance, the combination of glossy-blue ceramic tile, matte-cement floor tile in a geometric motif, and a vanity in richly veined teak might appear haphazard—though it was anything but. Says Mann, "We went through countless iterations, honing in on that blue with different ceramics and layering textures and warm and cool tones. It took time to make the tiles work together." Though initial plans called for the blue tiles to be installed on a diagonal, she recalls, "at the eleventh hour we decided that a vertical grid would really make the space. The accent wall ties everything together."

For the benefit of like-minded color enthusiasts, Mann insists, "Don't be afraid to go for it. It's nice when someone wants to step outside the box."

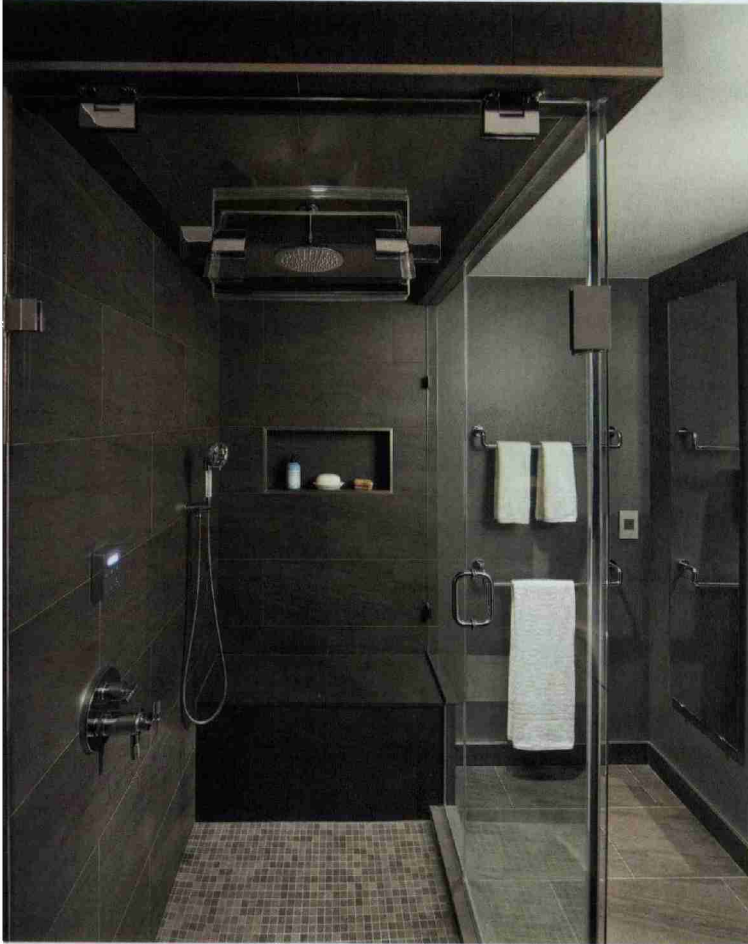
*Interior & Bath Design: Allie Mann and Elle Hunter, Case Design/Remodeling, Inc., Washington, DC.  
Contractor: Case Design/Remodeling, Inc. Photographer: Stacy Zarin Goldberg.*

### GET THE LOOK

Floor Tile: merolatile.com.  
Wall Tile: tilebar.com. Shower Floor  
Tile & Source: mosaictileco.com.  
Vanity: crystalcabinets.com.  
Countertop: caesarstoneus.com.  
Sink & Shower Fixtures: brizo.com  
through ferguson.com. Sink: us.kohler.com  
through ferguson.com. Sconces:  
visualcomfort.com through ferguson.com.  
Glass Enclosure: steelcityglass.net. Vanity  
Hardware: atlashomewaresdirect.com.  
Stool: homegoods.com.





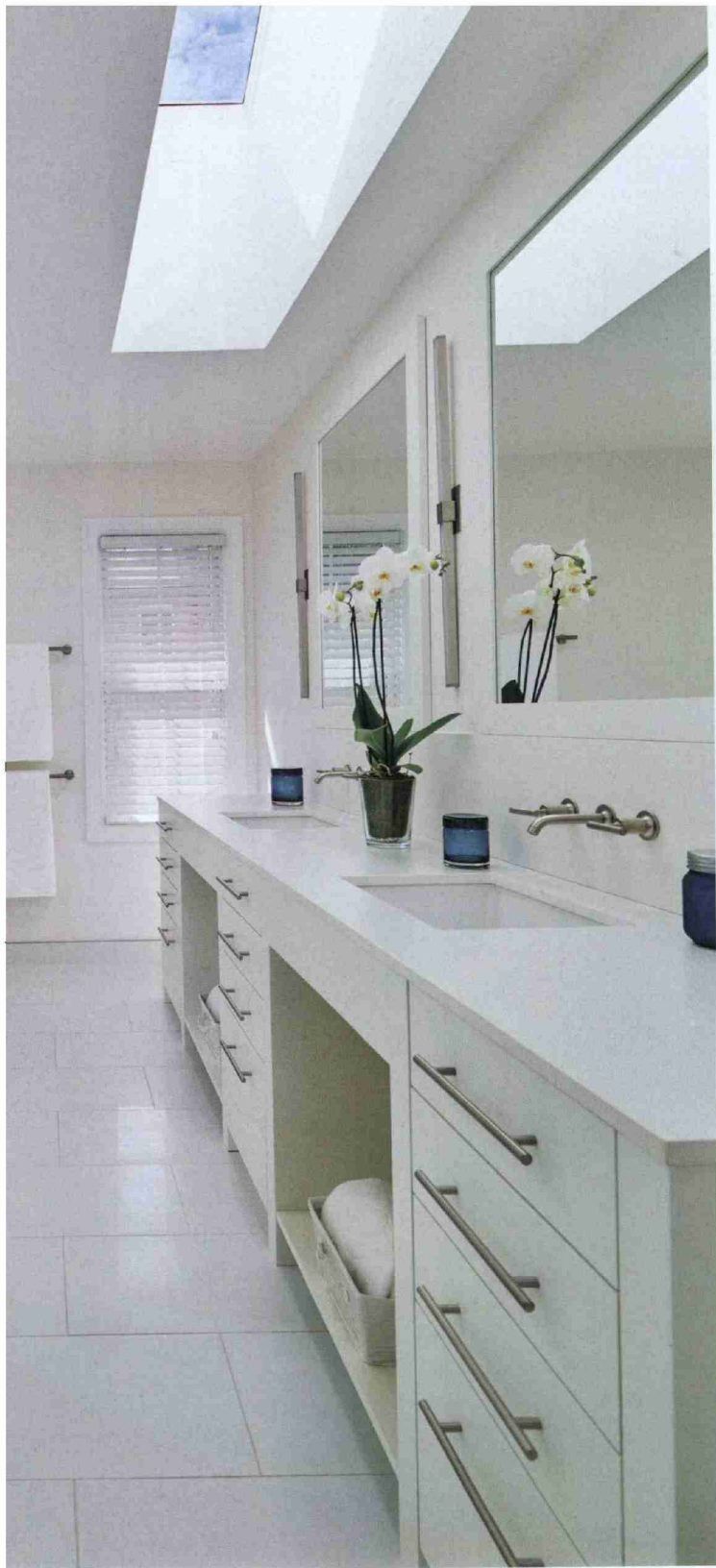


**GET THE LOOK**

**WHITE BATH:** Vanity: [artcraftkitchens.com](http://artcraftkitchens.com). Countertop: [silestoneusa.com](http://silestoneusa.com). Sink & Shower Fixtures: [us.kohler.com](http://us.kohler.com). Flooring: [mosaictileco.com](http://mosaictileco.com). Light Fixtures: [pureedgelighting.com](http://pureedgelighting.com). Toilet: [totousa.com](http://totousa.com).

**DARK BATH:** Floor, Wall & Shower Tile: [architecturalceramics.com](http://architecturalceramics.com). Steam Shower: [us.kohler.com](http://us.kohler.com). Sink & Shower Fixtures: [brizo.com](http://brizo.com). Sink: [duravit.com](http://duravit.com).





## Jonas Carnemark creates his-and-her baths in a Palisades bungalow

**A**fter moving into a DC home that had previously been remodeled, a young couple started dreaming up new ideas for a bath renovation to reflect their personal style. While the wife conjured a bright and airy retreat, her husband imagined a dark, masculine spa with a steam shower.

Rather than duking it out, the duo decided to make both visions a reality with help from designer Jonas Carnemark.

First, Carnemark transformed the master bath for the wife, removing its “bulbous” pickled vanity and dated corner tub to create a streamlined layout. Eliminating a small linen closet made way for an oversized shower, centered under an enlarged skylight. A vanity with three drawer columns and cubby recesses provides efficient storage. “We made the mirror frames from the cabinet material so it ties together nicely,” says the designer. “She wanted it to feel natural but also care-free. Quartz countertops and porcelain tile that resembles marble on the walls fit the bill perfectly.”

In his redo of the husband’s basement lair, the designer also sourced organic-looking material—namely anthracite porcelain on the floor and walls. By borrowing square footage from an adjacent utility room, he created space for a luxurious glass enclosure featuring a rain shower, hand shower, steam system and built-in bench. A corner sink with built-in shelving and chrome details completes the picture. “For him, the bath was about relaxing in the steam shower after work or weekend sports,” explains Carnemark.

The yin and yang of their disparate bath styles was not lost on the homeowners. “They played with that aspect,” Carnemark relates. “They thought it was cool.”

*Bath Design: Jonas Carnemark, CKD, CLIPP, KONST Union, Bethesda, Maryland. Contractor: CARNEMARK design + build, Bethesda, Maryland. Photography: Anice Hoachlander.*

## In their remake of a DC bath, designers tap into Japanese tradition

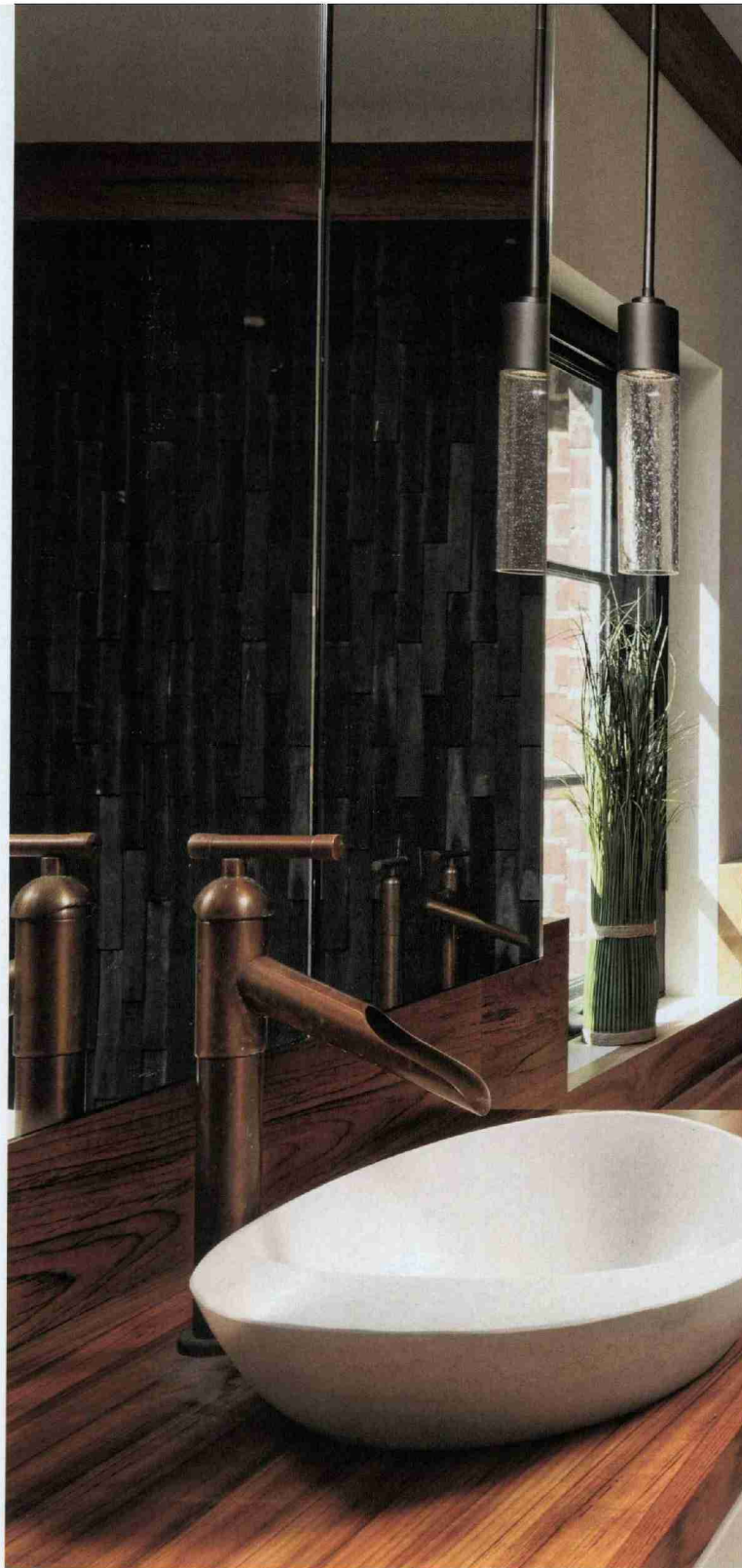
After she updated a client's DC kitchen in sleek Japanese style, it was no surprise that designer Jennifer Gilmer went in a similar direction when asked to overhaul the couple's cramped, inefficient master bath.

Working in the existing footprint, the first move was to reorganize a tight layout dominated by an oversized whirlpool tub. Its removal left Gilmer and associate Meghan Browne with enough square footage to create a wider vanity suitable for two and a larger, open shower positioned beside a teak ofuro soaking tub. "When I was in Japan," explains Gilmer, "I learned that it's customary to take a shower and then soak in one of these traditional Japanese tubs, so the shower and tub are always located close to each other." A linear shower drain eliminated the need for an enclosure, which helped make the space look larger.

As the project took shape, the designers honed in on organic materials and textures. "Part of the principle in this type of design is to bring the outdoors in using natural products like stone and wood," explains Gilmer. Accordingly, she and Browne sourced a sculptural limestone sink resembling a smooth rock, applied dramatic slate tile on an accent wall and echoed the soaking tub with a teak countertop, wainscoting and crown molding. "We also found the perfect plumbing fixtures. They look like they could be made out of bamboo, but in a metal finish that feels ancient," Gilmer adds. An inlay of river rock delineates a step-up to the tub.

The owners love to unwind in their reimagined bathroom, says Gilmer. "It was incredible how this concept made the entire room seem like it was twice as large." ■

*Bath Design: Jennifer Gilmer, CKD; Meghan Browne, CKD, Jennifer Gilmer Kitchen & Bath, Chevy Chase, Maryland. Contractor: Lappas Contracting, Bethesda, Maryland. Photography: Bob Narod.*





**GET THE LOOK**

Vanity: [decorcabinets.com](http://decorcabinets.com).  
Countertop: [glumber.com](http://glumber.com). Stone  
Fabrication: [rbratti.com](http://rbratti.com). Sink: [stoneforest.com](http://stoneforest.com) through [ferguson.com](http://ferguson.com).  
Plumbing Fixtures: [sonomaforge.com](http://sonomaforge.com)  
through [ferguson.com](http://ferguson.com). Hardware:  
[hidatool.com](http://hidatool.com). Tub: [zenbathworks.com](http://zenbathworks.com).  
Floor & Wall Tile: [architecturalceramics.com](http://architecturalceramics.com). Mirror: [hutchisonglassandmirror.com](http://hutchisonglassandmirror.com).