

Who we are

- SimPure® is a purification brand based in the United States, focusing on engineering filtration and advanced purification technology.
- SimPure® promotes the philosophy of a minimalist lifestyle, returning to nature with clean water and fresh air.
- SimPure® design product's to be both smart, easy to operate, and practical in appearance and functionality.

Contact Us

If you require technical assistance, please contact our friendly professional support engineers, who will be pleased to assist you.

4530 B STREET NW #A,
AUBURN WA 98001, USA

Phone: +1-866-528-4572

Email: service@simpurelife.com

Web: www.simpurelife.com



Membrane Solutions Corp
4530 B STREET NW #A,
AUBURN WA 98001, USA

T1-5 Basic



SimPure®
Stay Simple, Stay Pure

Reverse Osmosis (RO) Water Filtration System

Part Numbers: 75 GPD Model: T1-5-75G Basic
100 GPD Model: T1-5-100G Basic

Please retain owner's manual for future reference

Table of Contents

Overview	1
Getting Started	2
Introduction	2
Warning and Caution	3
Operating Guidelines	4
Installation Guide	6
Installation Kit	7
Installation Guide	9
Plan your installation	9
Assemble the Components	11
Installing Cartridges.....	17
Plumbing the system.....	21
Flushing the system ready for use.....	23
Operation and Maintenance.....	24
Day to Day Operation.....	24
Monthly Maintenance.....	24
Water Testing	25
Replacing Consumables.....	26
Replacement parts.....	28
Trouble Shooting Guide.....	29
Warranty.....	30
Our Products and Services.....	31

Operators and Maintenance Handbook
 SimPure® T1-5 Basic Reverse Osmosis (RO)
 Water Filtration System

Owners Handbook Manual Ref: MSRP-101L-05

Revision	Date	Description
01	06/2021	New document.

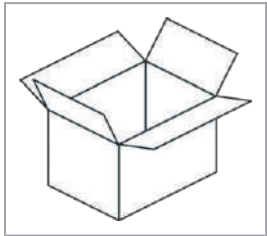
Overview

Getting Started



- Introduction
- System features
- SimPure® contact details
- Warning & Caution
- Operating Guidelines

Installation Guide



- System Contents
- Installation Kit
- Required Hand Tools
- Site Preparation
- Assemble Components
- Commissioning

Operation Guide



- Operation Guide
- Maintenance
- Consumables
- Water Tests
- Troubleshooting Guide
- Warranty

Getting Started

Introduction

Thank you for purchasing the SimPure® T1 Reverse Osmosis (RO) Water Purification system, delivering pure water to your home. Please refer to the Simpure® website for the latest product information, including operator manuals, videos, support materials, and where to purchase items.



The T1-5 is a piece of durable equipment, with proper care it will last for many years. This owner's handbook outlines the installation, operation, and maintenance requirements to sustain perfect product performance.



The T1 features six stages of filtration to produce healthy, clean water for your family

- Sediment removal.
- Chlorine removal.
- Taste & odor filtration.
- Reverse Osmosis (RO).
- Post RO Carbon polishing.

Web: www.simpurelife.com

eMail: service@simpurelife.com

Toll-Free Phone: +1-866-528-4572

Warning& Caution

SimPure® products are designed with safety in mind. However, personnel working on these units must be familiar with any potential dangers. All safety information detailed in this handbook should be reviewed before installing and operating this water purification system.

This product is not a toy; children must be supervised when using the system. Keep packing materials out of children's reach.

The system has been designed for indoor use only. Install the system out of direct sunlight on a flat, level dry, and secure surface or mounted securely in a location with average ambient room temperature.

Do not move the system without first isolating the feed water, draining, and releasing water pressure.

This unit is for use with cold municipal tap water or potable well water that has been tested safe by a certified laboratory. Never use this unit with hot water or unknown/unsafe sources.

The installation of the system must comply with your local and state regulations. Please check before commencing installation.

In case of malfunction, isolate the water supply to the system. If any part of the system is damaged or missing, replace the item before use.

Warnings and cautions are provided. Failing to observe the instructions could result in damage to the equipment, associated parts, surroundings, or personal injury.

Operating Guidelines

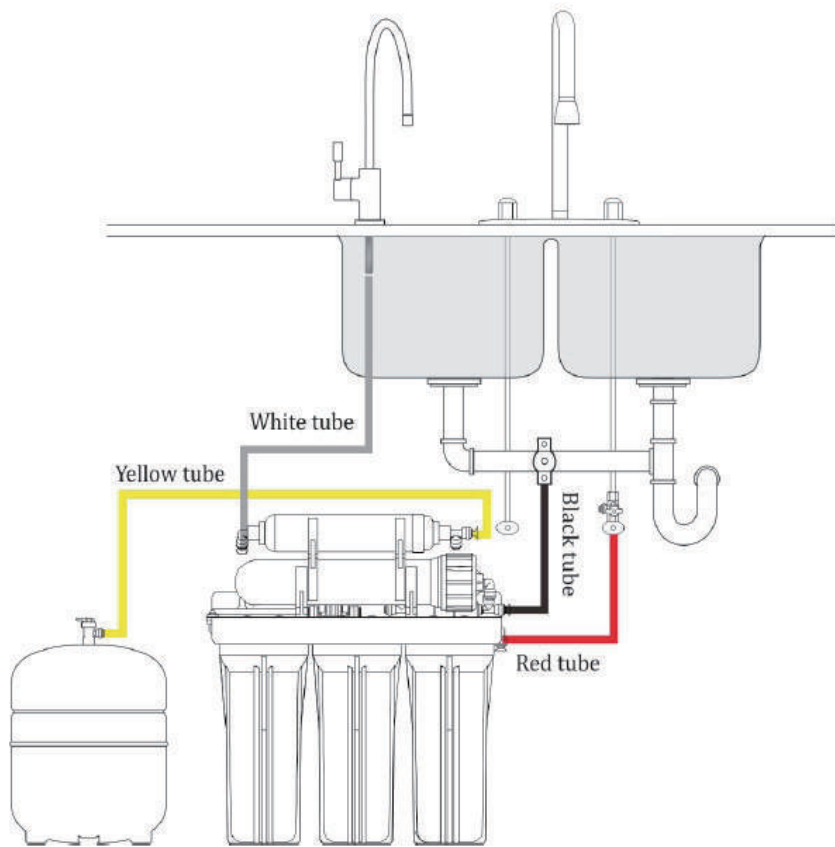
The following table lists the operating parameters for this product. Operating this product outside these specifications may cause system performance issues and may even lead to personal injury and void any warranty. Please contact SimPure® for further advice and support.

Operating Parameters	
Model	SimPure® T1-5-75 Basic & T1-5-100 Basic
Production rate (up to) <small>Dependent on feedwater type, operating pressure and water temperature.</small>	T1-5-75 Basic: 75 Gallons per day (283L) T1-5-100 Basic: 100 Gallons per day (378L)
Power requirements	Not applicable, this product only requires water pressure to operate.
Feedwater Type	Municipal potable/tap water or Well water meeting government standards
Feedwater Pressure	Ideal feedwater pressure should be between 40 and 80 psi (275 to 550 kpa) Pressures below 40 psi will slow down the water production, and a booster pump may be required. The maximum system operating pressure is 85 psi (600kpa). Install a pressure regulator if exceeding this feedwater pressure
Feedwater Temperature	41-100°F (5-38°C)
Ambient Temperature	40-104°F (4-40°C)
Feedwater TDS* level	≤ 500 ppm
Water Hardness (Optional)	For best results use a softened feedwater supply with a hardness level below 10 gains per gallon, with no iron present.

* TDS = Total Dissolved Solids, which is the total weight of all solids dissolved in a given volume of water, expressed in units of mg per unit volume of water (mg/L), also referred to as parts-per-million (ppm). With a SimPure® TDS meter, you can easily compare the system outlet quality with your source water to help monitor the performance of the system.

Typical Installation

The following illustration is a typical under sink installation showing the SimPure® T1 Reverse Osmosis (RO) Water Purification system with a water pressure tank, connected to the Gooseneck faucet, installed over the sink.



Installation guide

System Contents

Your SimPure® T1 RO Water Purification system was carefully assembled, packaged, and shipped complete with all the parts you should require for a standard installation.

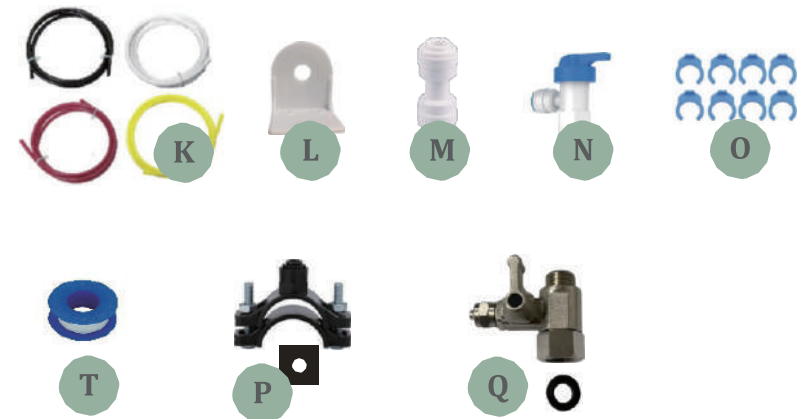
Unsure about something? Is there a problem?
Please contact SimPure® through our website or toll-free number.



*Web: www.simpurelife.com
eMail: service@simpurelife.com
Toll-Free Phone: +1-866-528-4572*

Inspect Installation Kit

Carefully unpack your SimPure® T1 RO Water Purification system. Layout the parts so you can familiarize yourself with the components, check nothing is missing before you start the installation.



Package Contents List		
	Description	Part Number
A	PP Filter	RSMPP001
B	GAC (UDF Filter)	RSGAC001
C	CTO Filter	RSCTO001
D	Reverse Osmosis element (RO)	RSRO004
E	T33 Filter	RSIN002
G	Water pressure tank	ACWPT005
H	Gooseneck faucet	HEWPRO007
I	Housing wrench RO	AWPA006
J	Housing wrench filters	AWPA007
K	Tubing ¼" PE 16ft (5 Metres)	AWPA031
L	Faucet mounting plate	AWPA017
M	Adaptor inline (faucet) ¼" tube QC	AWPA018
N	Valve (water tank) ¼" tube QC to thread	AWPA009
O	Locking 'C'-clips for ¼" QC fittings (x8)	AWPA008
P	Valve saddle (drain connection) ¼" tube QC	AWPA002
Q	Feedwater valve ⅝" M x ⅝" F comp. thread	AWPA003
T	Teflon tape (roll)	AWPA001
U	Self-tap screws M5X36mm & wall plugs (x2)	AWPA019
V	Self-tap screws M4X30mm & wall plugs (x3)	AWPA020

Installation Guide

Read the entire manual thoroughly before beginning your installation. Take note of the safety tips and follow all steps to ensure your system is installed correctly before use. Installation needs to comply with state and local laws and regulations; you must check and comply with all local plumbing codes. Warning: Massachusetts, USA, require installation by a licensed plumber and does not permit the use of saddle valves. (plumbing code 248-CMR of the Commonwealth of Massachusetts)

Hand tools required

Essential hand tools are required to install the SimPure® T1 RO water purification system. An electric drill, drill bits up to ½" (12.5mm), Adjustable wrench, tube cutters (or knife), cross-head screwdriver (Phillips), hammer, and center punch.



Plan your Installation

Your SimPure® T1 Water Purifier can be installed under a sink or in a remote location. Typical remote sites include a laundry room or utility room. Review the location options below and determine where you are going to install your system.

Option 1: Under-sink. The unit can be installed in a kitchen or bathroom sink cabinet. A suitable drain point is required for drain water from the Reverse Osmosis system.

Option 2: Remote Interior. The unit may also be installed in a remote interior location away from the RO Faucet. You will need a nearby feed water source and drain point connection.

Check Space Requirements

Determine and check the size and position of items for proper installation into the chosen space and remember to leave enough space around the system for changing filters and maintenance.

Need assistance? Contact SimPure!

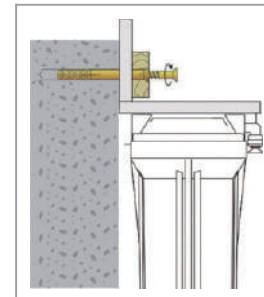
Site preparation

Before starting the installation, isolate the hot and cold-water supply.

Temporarily place tank and filter assembly into the planned location. Check the positioning of items and space required for the correct installation. Ensure that tube will reach each section and can be installed without any kinking.



SimPure® T1 RO water purification system can be placed on a flat surface or fixed on the wall under the sink.

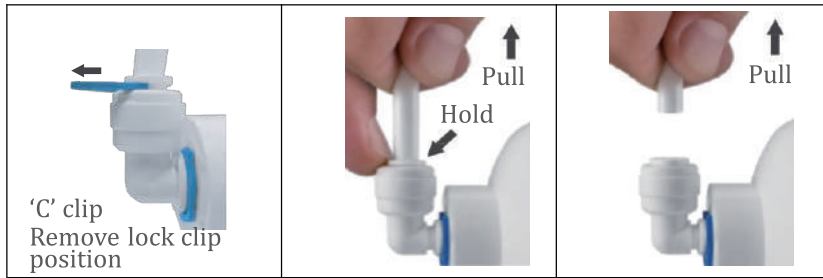


When mounting on the wall, please use the included x2 self-tapping screws and wall plug (U) or an alternative fixing method suitable to your installation requirements.

Assemble the Components

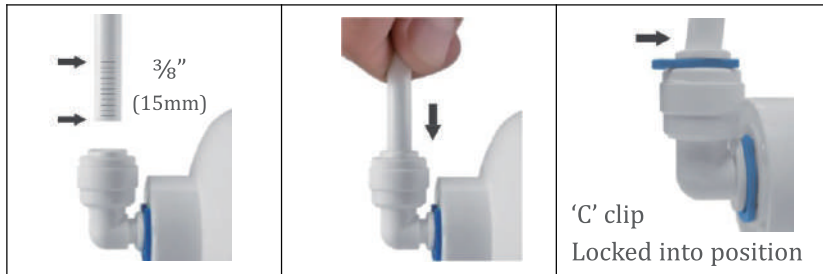
How to use the Quick-Connect (QC) fittings

The SimPure® T1 Water Purification system uses quick-connect (QC) fittings making the installation simple and easy.



How to release tube (or plug) from a quick-connect.

- (1) Remove the locking C-clip by sliding it out from under the quick-connect fitting collet.
- (2) Push the collet down onto the fitting (closing the gap between the collet and fitting) and hold.
- (3) While holding the collet down, gently pull tube (or plug) in the opposite direction at the same time to release.

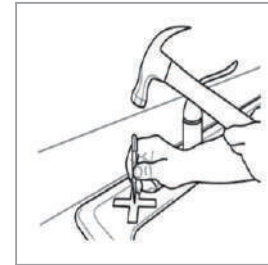


How to insert tube into a quick-connect.

- (1) Make sure the tube has a clean square cut with no burr present.
- (2) Push the tube firmly into the QC fitting, making sure it is located correctly (you will feel the tube 'jump' into position as you push it into the fitting). The tube is secure once it has traveled $\frac{3}{8}$ " (15mm) into the fitting.
- (3) Replace the locking C-clips to secure the QC fitting.

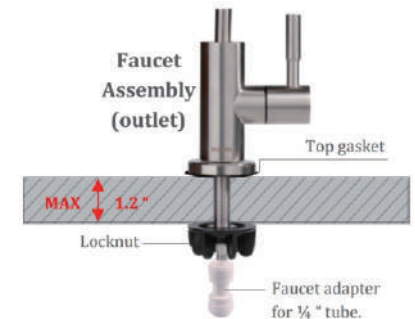
Gooseneck Faucet Assembly

SimPure® T1 RO water purification system comes with a Gooseneck faucet, which is used to dispense the purified water. There are two methods for installation:



Fixing to the Sink. Try to install the faucet on the sink surround if possible, using one of the mounting holes already available, remove the cover, make sure you have clear access above and below. The faucet outlet is over the sink. Test out the location by holding the faucet in the desired spot first before making any modifications. If there are no additional holes available, you will need to drill a suitable hole. A secondary option would be to mount the faucet directly into the countertop next to the sink. Max. thickness 1.2 inches (3.2cm). If you need to drill the countertop, especially for granite, tile, or concrete, you may need professional assistance.

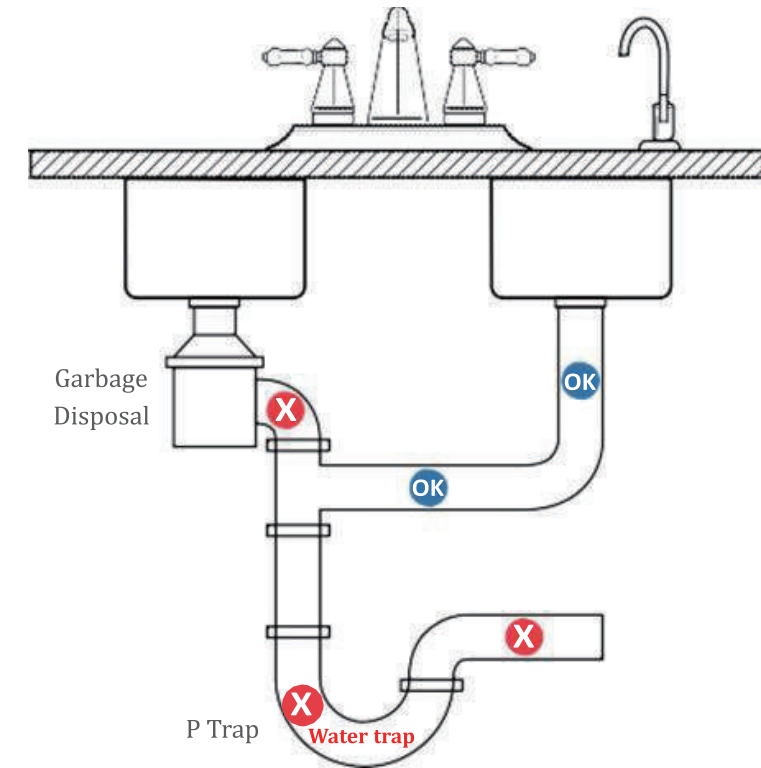
Using a hammer and center punch, mark the hole. Drill a pilot hole first, working up to $\frac{1}{2}$ " (12.5mm) drill bit. Insert the faucet through the hole with the top gasket in place and secure it with the locknut.



Fixing to the Wall. Use the included faucet mounting plate. Drill suitable size holes in the wall for the supplied x3 self-tapping screws and wall plug (V) or use an alternative fixing method as required.

Install the saddle valve drain connection

The SimPure® T1 Water Purification system requires a drain connection before it can be used. If installing the product under a sink, make sure you connect the drain to a straight piece of pipe and make sure it is BEFORE the water trap ('P' trap or 'U' bend) see diagram below.



OK
INSTALLATION
 Only install saddle valve on straight pipe above any water traps!

X
WARNING!
 Never mount drain saddle on bends or below the water trap!

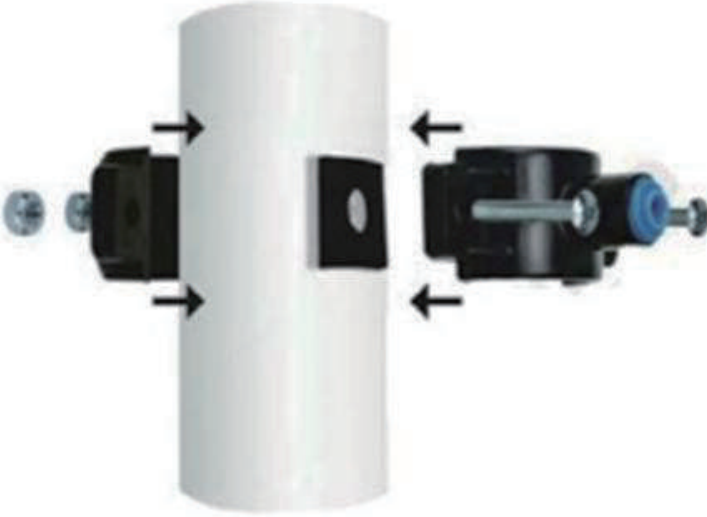


Drill a ¼" (6.5mm) hole on the drainpipe with an electric drill.



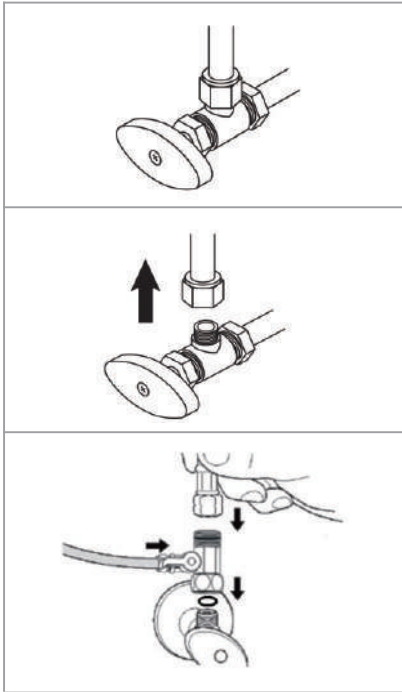
Remove the backing and stick the saddle valve seal on the pipe, line up the holes.

Assemble the drain saddle valve according to the picture below and tighten the bolts evenly with the cross-head screwdriver to allow the clap to fit snugly around the pipe (Do Not Overtighten). Once secure, you can insert the PE tube into the saddle valve QC fitting.



Install the feed water adaptor valve

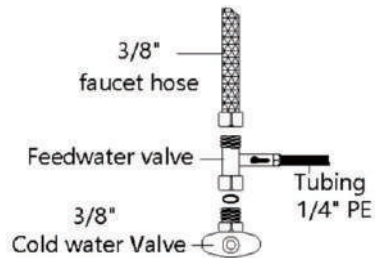
The SimPure® T1 Water Purification system requires a connection to the water supply. To do this, we use the supplied feedwater adaptor.



Locate Shut off valve. Turn off the COLD water shut off valve located under the sink.

Warning: Make sure you have turned the water supply off before starting any plumbing work.

Remove the original connection from between the faucet and the cold water shut off valve under the sink. Connect the cold-water supply and feed water adapter valve.



Note: Please check if the sealing ring is installed, or it may leakage.

Optional Fittings:

The feed water adaptor valve supplied is suited for most sink connections; 3/8" pipe (9/16" OD) compression fitting. If your installation requires a different connection style or size, please visit your local hardware or plumbing store for the necessary adaptors for connection to 3/8 "pipe (9/16" OD) compression fittings.

Water Pressure Tank Assembly

The SimPure® T1 Water Purification system comes complete with a water pressure tank to allow for a smooth and continuous output flow.



Wrap the threaded tank stem with Teflon tape and screw the valve onto the top of the tank hand-tight only; do not use any tools.

Only lightly tighten this fitting and the Teflon tape will make the seal without being over-tightened.



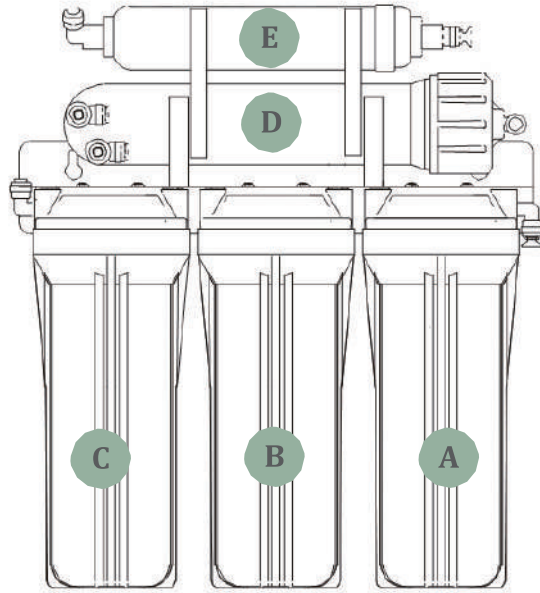
The Water Pressure Tank has an internal bladder that uses air pressure to provide the working pure water pressure required for the system. This pressure has been factory set. There is no need for any adjustment; it has been factory pre-set. Please do not adjust.

*Need assistance?
Contact SimPure!*

*Web: www.simpurelife.com
eMail: service@simpurelife.com
Toll-Free Phone: +1-866-528-4572*

Installing Cartridges

The cartridges must be loaded as follows, or the system will not function correctly. Please follow the instructions:



Consumables Cartridges		
	Description	Part Number: ASIN
A	PP Filter	IFMPP002
B	GAC (UDF) Filter	RSGAC001
C	CTO Filter	RSCTO001
D	Reverse Osmosis (RO) for 75 GPD model	RSRO004
D	Reverse Osmosis (RO) for 100 GPD model	RSRO005
E	T33 Filter	RSIN002

***Please Note:** A SimPure® T1 RO consumable kit is available, which is shipped with 1 item of each filter (except the RO membrane) Please refer to the replacing consumables section for details when re-ordering consumables.

The SimPure® T1 is supplied with the T33 and ALK filters already in place; you just need to load the RO membrane element and three pre-



treatment cartridges. Let's start with the RO membrane element below.

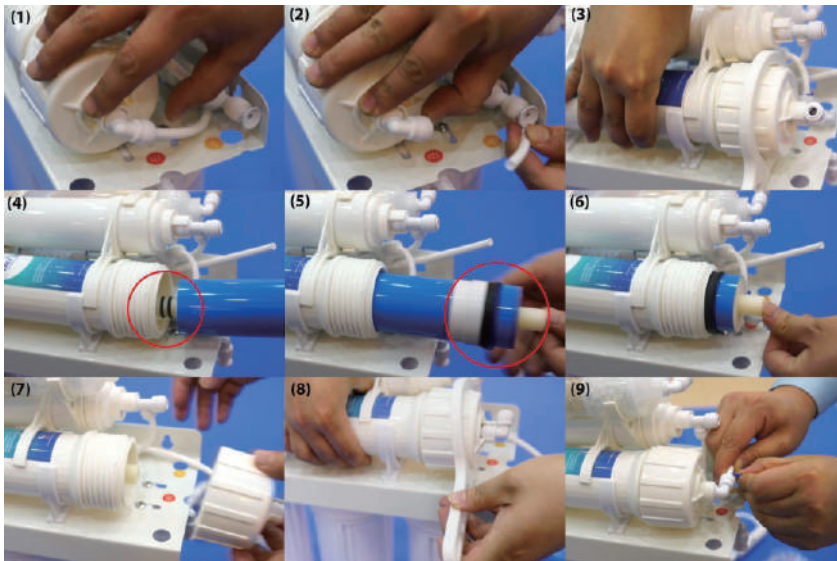
RO Membrane Element Assembly

It's now time to install the SimPure® T1 RO membrane element.



RO Membrane Housing

The RO membrane housing is located on top of the main system body.



- (1) Remove the locking C-clip from the RO housing end cap QC adaptor.
- (2) Disconnect the PE tube from the QC adaptor.
- (3) Unscrew the housing cap with RO housing wrench.
- (4) Place the new RO membrane into the housing. Two 'O'-rings first.
- (5) The large black chevron seal should still be visible.
- (6) Push the RO membrane fully into the housing
- (7) Check the 'O'-ring inside the housing cap is in place and reassemble.
- (8) Tighten the RO housing end cap using the wrench.
- (9) Reconnect the PE tubing and C-clip to the RO housing cap.

Please pay attention to the direction the RO element has to be installed, or it will not function properly.



Pre-Filter Housing Assembly

Now we have the RO membrane element loaded. We need to install the cartridge filters in the three removable housings



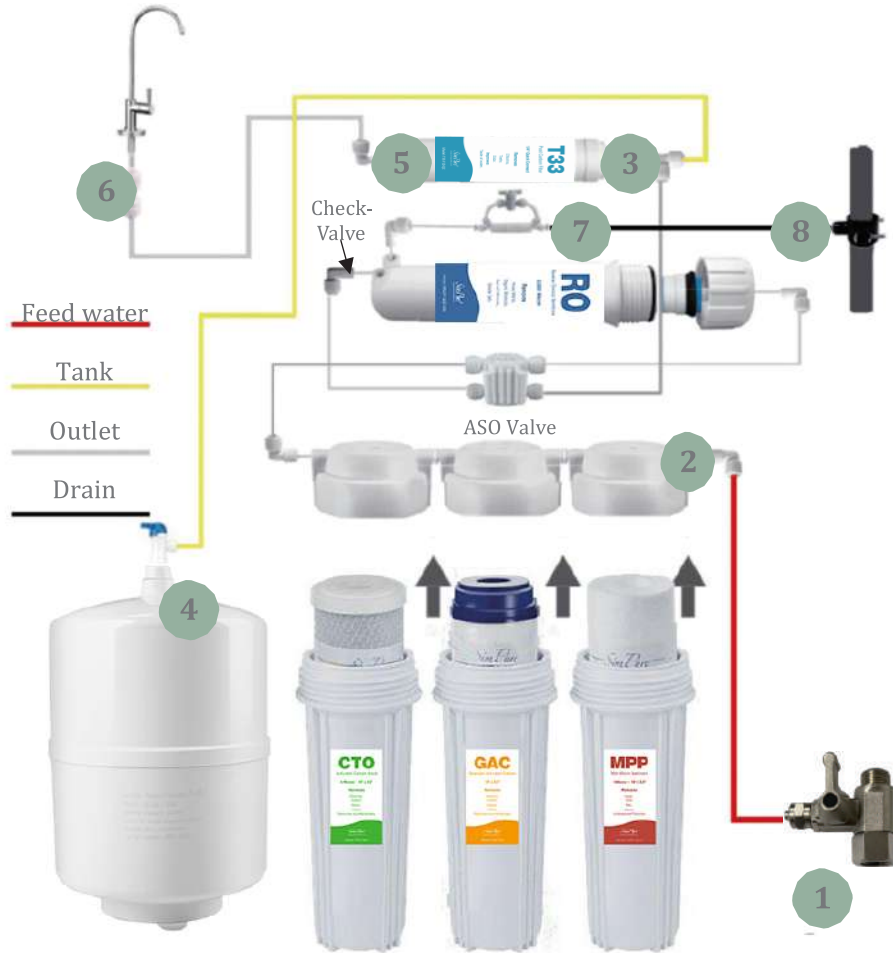
Pre-Filter Housing Bowls

Pay special attention to the direction the GAC (UDF) cartridge is installed, or it may cause a water leak.



Plumbing the system

Now all the sub-assemblies are complete, the faucet and drain connections are installed, and the main system is ready with cartridges. It's time to connect everything together with the included ¼" PE Tube.



Make sure all plumbing connections are correct, and all fittings are secure to prevent possible leaks.

Using the enclosed ¼ PE tube which shipped with your SimPure® T1 system, plumb up the following four connections as follows:

Feedwater Connection – Using the ¼ red PE Tube and QC fittings connect between (1) feedwater adaptor and (2) prefilter inlet.



Pressure Tank Connection – Using the ¼ yellow PE Tube and QC fittings connect between (3) inlet tee of the T33 filter and (4) the valve on top of the pressure tank.

Outlet Connection – Using the ¼ white PE Tube and QC fittings connect between (5) the outlet of the T33 filter and (6) the Gooseneck faucet connector

Drain Connection – Using the ¼ black PE Tube and QC fittings connect between the (7) the flush valve assembly and (8) the saddle valve you inserted early into the drain line.

Please Note: A small amount of water will flow to the drain while your SimPure® T1 system is refilling the water pressure tank and it is normal the waste water flow rate is 10oz/min (300ml/m) during operation.

Web: www.simpurelife.com
 eMail: service@simpurelife.com
 Toll-Free Phone: +1-866-528-4572

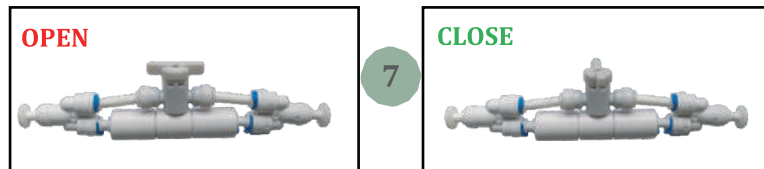
Flushing the system ready for use

Before you can use the system, all pipework, fittings, pressure tank and all consumables must be flushed properly.

DO NOT consume any water until flushing is complete.

STEP 1 – Refer to Plumbing Diagram (Page 23). Re-check all connection points. **CLOSE** the pressure tank valve **(4)**.

STEP 2 – **OPEN** the flush valve **(7)** for 15 minutes; this will flush/rinse the PP, GAC (UDF), and CTO filters to drain.



STEP 3 - **CLOSE** the flush valve **(7)** and **OPEN** gooseneck faucet for 20 minutes, this will allow the RO membrane to flush.

STEP 4 - **CLOSE** the gooseneck faucet and **OPEN** the pressure tank valve **(4)**. The tank will fill in 2 - 3hrs.

STEP 5 - **OPEN** the gooseneck faucet **(6)** to flush the pressure tank down the sink drain. 3.2 gallons (12 Litres).

STEP 6 - **CLOSE** the gooseneck faucet **(6)** and allow the pressure tank to refill (2-3 hrs.) then drain the pressure tank a 2nd time,

STEP 7 - **CLOSE** the gooseneck faucet **(6)** and allow the pressure tank to refill for the third time (2-3 hrs.) You have now completed the initial installation flushing sequence and can use the purified

water for drinking and food preparation.

CONGRATULATIONS!

You have completed the installation!

Please make sure the flush valve is **CLOSED** once the flushing is complete and when the system is under operation.

Operation and Maintenance guide

Day to Day operation of the SimPure® T1

The system is designed to purify feedwater continually until it has filled the 3.2 Gallon (12L) pressure storage tank. As water is drawn from the faucet tap the tank level drops and the system automatically refills. In regular operation the system valves should be in the following position:

Normal Operation	
Valve Name	Valve Position
Feedwater valve	OPEN
Pressure tank valve	OPEN
Flush valve	CLOSED
Gooseneck faucet valve	CLOSED Unless dispensing purified water

Monthly Maintenance

Flush the system monthly to help remove any buildup of particulates on the feedwater side of the system and refresh any purified water in the pressure storage tank this helps maintain the output water quality and high system performance:

STEP 1 – Make sure the gooseneck faucet tap is **CLOSED**

STEP 2 - **OPEN** the flush valve **(7)** for 5 minutes, this will allow the RO membrane to flush to drain removing any contaminants.

STEP 3 – **CLOSE** the manual flush valve **(7)**.

STEP 4 – **OPEN** gooseneck faucet valve and run water to drain until the flow rate slows to a trickle

STEP 5 – **CLOSE** gooseneck faucet and allow the system to refill (2-3hrs).

Water testing (Optional)

To monitor the performance of your SimPure® T1 Water Purification system, you will need a water meter that can test the impurities in water. SimPure® has a simple to use handheld TDS meter designed for this purpose.

It is recommended you follow the Monthly Maintenance procedure before taking a water sample:

STEP 1 – OPEN the gooseneck faucet tap and run about one quart (1 liter) to drain before sampling the water

STEP 2 – Rinse a clean cup or small container with the purified water and disregard, refill container.

STEP 3 – Place the SimPure® TDS Meter in the solutions and follow the instruction to take a TDS reading

STEP 4 – Once you have a purified water reading, you should then test the feedwater. Run some water from your standard cold sink water tap into a clean cup or small container and test the TDS.

Now that you have a water quality reading from the feedwater and the purified water, you can compare and see how well your water purification system is operating.

As a general guide, the purified water TDS level should be >90% lower than the incoming feedwater indicating the system is working well; however, this does depend on feedwater quality, which can be substantially different from one region to another.



SimPure® TDS Meter

Part Number:
RSTDS002

Replacing Consumables

It is important to maintain the filters and RO membrane to ensure the outlet water quality is a consistently high standard.

The life expectancy of filters and replacement schedule is dependent on source water quality and water consumption.

Under normal situations, we recommend users replace filters as per the table below:

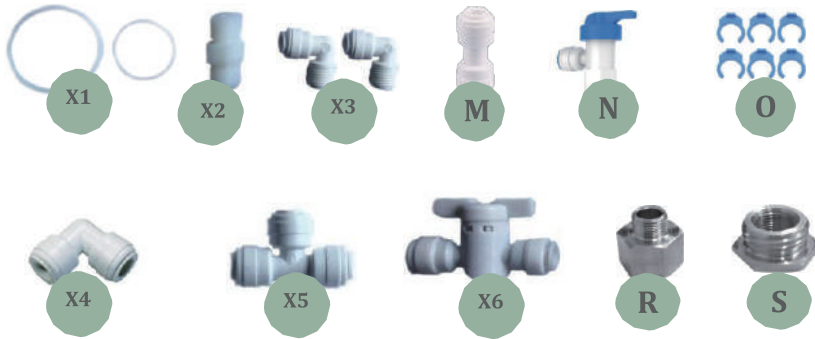
Replacement Consumables Cartridges			
Description	Model	Part Number	Replacement Schedule (Months)
PP Filter	MPP-F10-5	IFMPP002	3 – 6
GAC Filter	GAC-F10	RSGAC001	3 – 6
CTO Filter	CTO-F10-5	RSCTO001	3 – 6
T33 Filter	T33-F10-QC	RSIN002	3 – 6
RO75G Filter	ROULP-1812-75	RSRO004	24-36
RO100G Filter	ROULP-1812-100	RSRO005	24-36
Filter Kit (PP+GAC+CTO+RO75G+T33)	SP4-RO75	RSWF015Z_S	Refer to above single filters
Filter Kit (PP+GAC+CTO+RO100G+T33)	SP4-RO100	RSWF016Z_S	Refer to above single filters

*Note: Depending on your system type, order either the 75 or 100 GPD.



Spare Parts Kit (not include)

A SimPure® replacement spare parts kit is available should you need to relocate or service the T1 system or replace fittings.

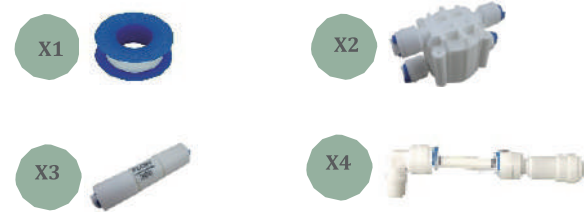


Spare Parts Kit Contents

	Description	Part Number:
X1	Pre-filter housing 'O' ring	AWPP001
X1	RO housing 'O' ring	
X2	Nipple hex ¼" male thread plastic	
X3	Elbow ¼" tube QC to threaded (x2)	
X4	Elbow inline ¼" tube QC	
X5	Tee inline ¼" tube QC	
X6	Valve flush manual ¼" tube inline QC	
M	Adaptor inline (faucet) ¼" tube QC	
N	Valve (water tank) ¼" tube QC to thread	
O	Locking 'C'-clips for ¼" QC fittings (x6)	
R	Bush red. ⅜" male comp. x ½" female NPT	
S	Bush red. ½" male NPT x ⅜" female comp.	

Replacement Parts (not include)

SimPure® replacement parts are available should you need to perform maintenance on your T1 system.



Replacement (individual) Parts

	Description	Part Number:
X1	Teflon tape (roll)	AWPA001
X2	Automatic shut-off valve (ASO) ¼" tube QC	AWPA027
X3	300CC Flow Restrictor	AWPA029
X4	Check Valve Fittings Kit	AWPA030

Register for warranty



Please register for your product's warranty on the www.simpurelife.com website.

You will also find further information on this product and other SimPure® products

Sign up for our Newsletter to keep informed about new products and available upgrades.

Trouble shooting Guide		
	Problem	Possible Solution
1	The system is not functioning or starting	The feedwater does not meet the requirements. Check the feedwater source.
		Wrong tube connections. Review and correct tubes as per the manual.
2	No Purified water is coming out of the system	RO membrane is fouled. Flush the RO membrane and replace it if flushing does not help.
		Improper Teflon tape wrapping has blocked the filter connector. Remove Teflon tape and re-wrap tape around fittings.
3	The volume of purified water is low	The water temperature is too low. Make sure the unit is at room temperature, and feedwater is >40°F (4°C)
		Filters are blocking. Replace all filters and flush system.
		RO membrane is fouled. Flush the RO membrane and replace it if flushing does not help.
4	Water continually flowing to drain even after the system is full (after 2-3 Hours)	Automatic Shut-off (ASO) and/or check valve has failed, allowing water to flow to the drain. continuously. Replace the ASO valve and/or check valve.
		The manual flush valve is OPEN (wrong position). The flush valve should be in the CLOSED position.
5	The unit makes noises.	The unstable water pressure causes the system to cycle on/off frequently. Check whether feedwater pressure is stable.
6	The taste of purified water is getting worse.	Adsorption of the active carbon filters is saturated. Replace the active carbon filter.
		Wrong tube connection. Review plumbing as per manual.
		The unit is left unused for an extended period. Replace all filters and flush system.

Warranty

SimPure® warrants to the customer that its residential reverse osmosis systems will be free from defects in material and workmanship under normal use and service for a period of 1 year. We will replace or repair any part of the SimPure® reverse osmosis water system that we find to be defective in operation due to faulty materials or workmanship within one year since the date of the original purchase. Used replaceable filter cartridges and membranes are excluded.

General Conditions

SimPure® obligation to the customer under these warranties shall be limited, at its option, to replacement or repair of items covered by these warranties. Prior to return or repair of covered items, the customer must obtain a return goods authorization number from SimPure® and, at SimPure® option, return the item with freight prepaid by the customer.

Damage to any part of this system because of misuse, misapplication, negligence, alteration, accident, installation, or operation contrary to our instructions, incompatibility with accessories not installed by SimPure®, or damage caused by freezing, flood, fire, or Acts of God are not covered by this warranty. In all such cases, regular charges will apply. This limited warranty does not include service to diagnose a claimed malfunction in this unit. This warranty is void if the claimer is not the original purchaser of the unit or if the unit is not operated under normal municipal water or well water conditions. We assume no warranty liability in connection with this system other than that specified herein. This warranty is in lieu of all other warranties, expressed or implied, including warranties of fitness for a particular purpose. SimPure® liability hereunder shall not exceed the cost of the product. Under no circumstances will SimPure® be liable for any incidental or consequential damages or for any other loss, damage or expense of any kind, including loss of use, arising in connection with the installation or use or inability to use the covered items. These warranties are governed by the laws of the state of Washington, USA, and may change at any time without notice.

Our Products & Services

Notes:

Consumables



Full selection of consumable items to maintain your SimPure® T1 water system well into the future are available from SimPure® online or through your local Distributor.

Tools & Accessories



SimPure® Test equipment helps monitor the performance of your SimPure® water system, making sure it's performing as expected. SimPure® Leak Detector, automatically turns off the feedwater should your system develop a water leak.

Products



SimPure® Y7 Countertop RO Water Filtration System help to improve your life.

Say goodbye to the hidden dangers of tap water and eliminate the need to purchase bottled water for your home.