

**2024 COLLECTION**  
AUTUMN AND WINTER



DISTRIBUTED BY



**CIAO IMPORTS**  
authentic specialty foods

 (866) 249-0400

 [info@ciaoimports.com](mailto:info@ciaoimports.com)

 [www.ciaoimports.com](http://www.ciaoimports.com)



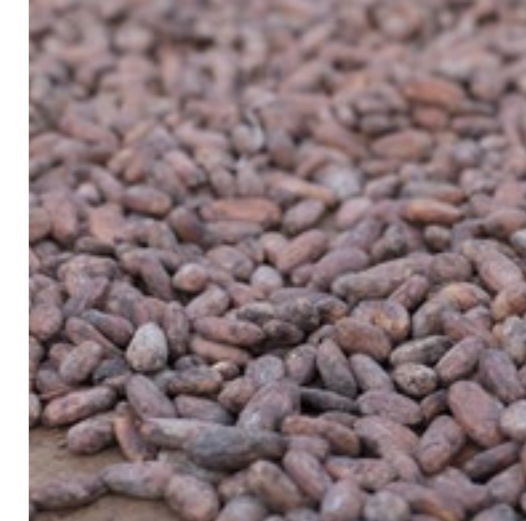


# PDG | POLO DEL GUSTO

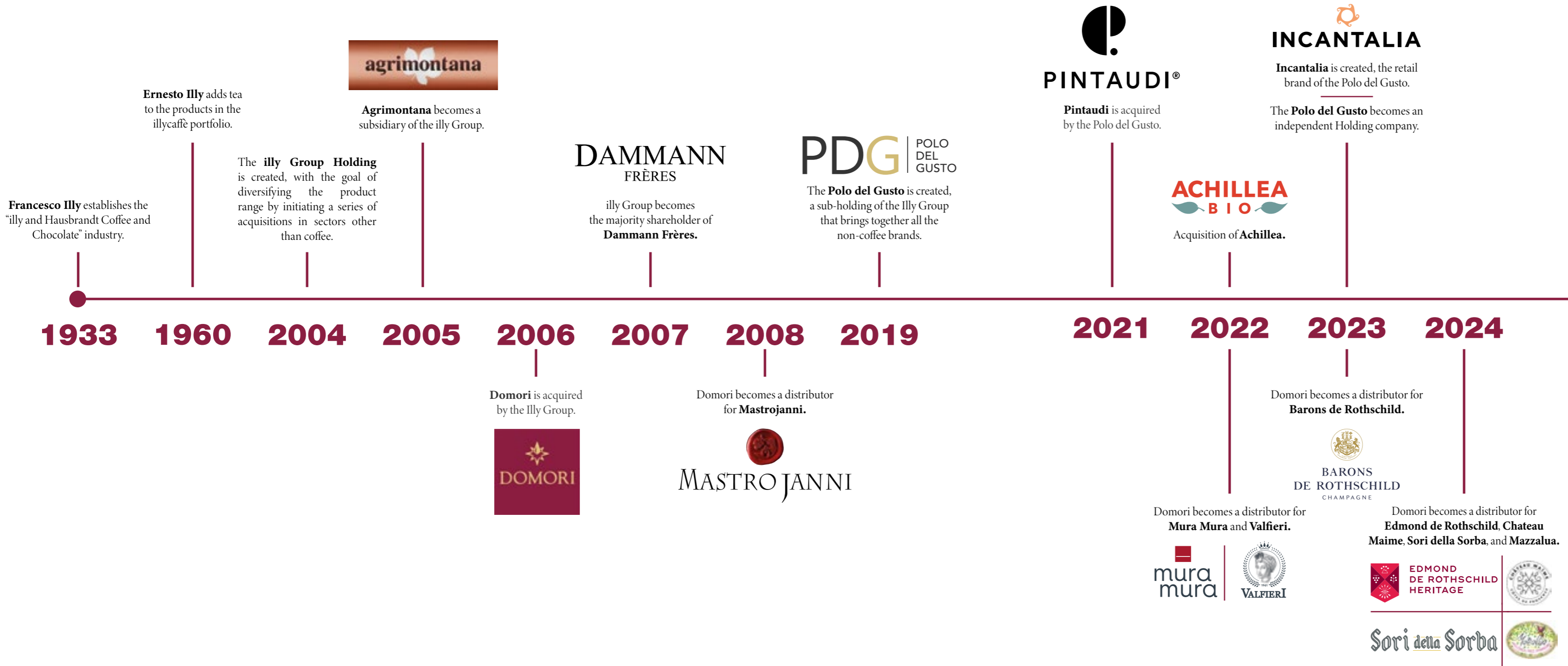
Founded in 2019, the Polo del Gusto brings together excellences in the Food & Beverage industry that stand out for the absolute quality of their end products. Perfection is present throughout each step of the production process. A virtuous circuit, where knowledge, technique, and creativity come together.

There are four aspects of disruptive quality:

- 01 - Perceived value, unique products.
- 02 - The excellence of raw materials.
- 03 - The art of the workmanship.
- 04 - The respect for human beings and the planet.

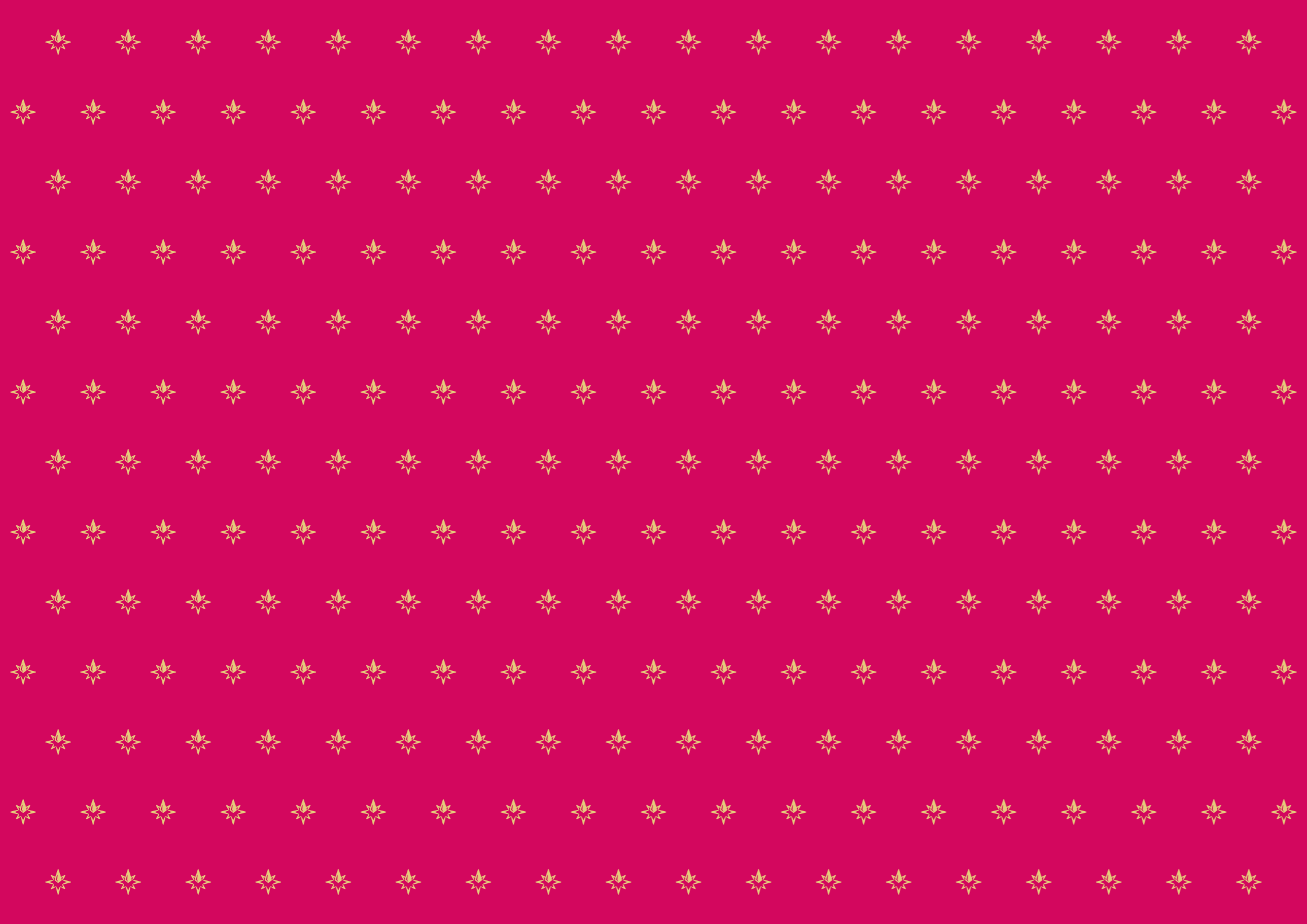




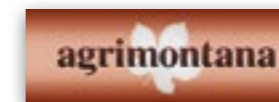


“The Polo del Gusto represents the culmination of a long journey in the pursuit of excellence in the food and wine sector. We invested with conviction in the selection of top quality products, aware that this was the longest term approach, and that which most closely matched the sensibilities of today’s consumers. The Polo del Gusto selects excellent producers with a shared commitment to absolute quality, with precision and consistency. Unique, skilfully crafted products that can easily complement one another - chocolate, tea, biscuits, fruit juices, wine, etc. For us, food means fulfilment, culture, experience, and authenticity.”

**Riccardo Illy** - President of the Polo del Gusto since its founding.



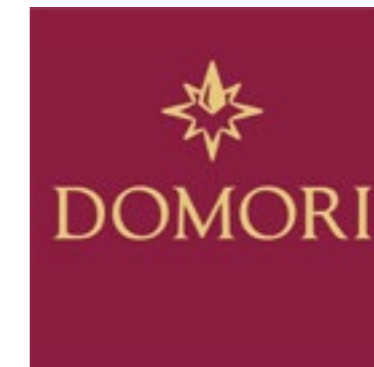
# 2024 COLLECTION FOOD



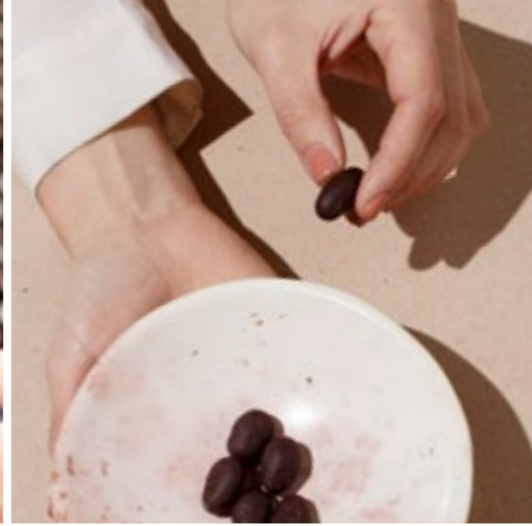
Domori is the exclusive distributor in Italy for:











## THE ISTITUTO INTERNAZIONALE CHOCOLIER



ISTITUTO  
INTERNAZIONALE



CHOCOLIER

The Istituto Internazionale Chocelier is a scientific organisation for the sensory training of chocolate professionals and amateurs.

The Institute's activities are based on the application of scientific sensory analysis to the transfer of knowledge through seminars, courses, and workshops.

Through training, the Institute aims to produce professional figures with

different levels of specialisation (chocolate sommeliers, or "Chocoliers"), who are capable of relating the characteristics perceived to the raw material and the technologies utilised.

Discover all the new courses and events for 2024 at [www.chocolier.org](http://www.chocolier.org)



## CRIOLLO CACAO

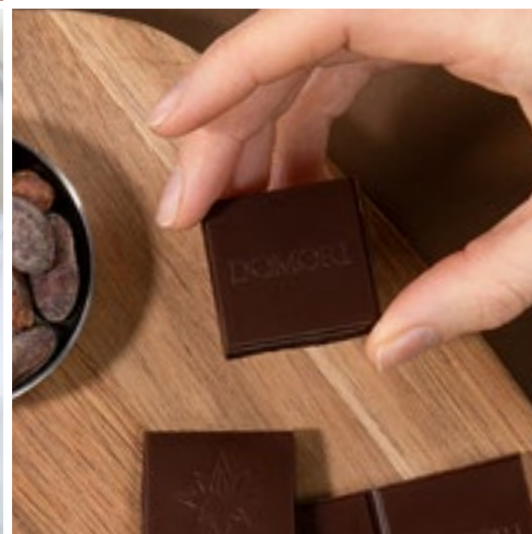


Its unique and great insight has allowed it to save the finest variety of cacao in the world from extinction, preserving the original aromas and making them accessible to chocolate enthusiasts all over the world.

Domori has the largest collection of Criollo in the world: a world heritage for the taste and recovery of biodiversity.

Criollo is the most prized variety of cacao, and was at risk of extinction: it is the cacao of the Maya and the Aztecs, whose cultivation has been progressively abandoned due to its low yield.

It is a rare and fragile cacao and represents only 0.01% of the cocoa produced in the world. The quality of this cacao is unparalleled.





# ANTHOLOGY - THE BARS



## ASSORTED DISPLAY ANTHOLOGY FLOOR-STANDING

**NEW PRODUCT**

Floor-standing display, delivered full-stocked (with 135 bars):

- 15 pcs. 70% Dark chocolate with Criollo cacao.
- 15 pcs. 85% Dark chocolate with Criollo cacao.
- 15 pcs. 100% cocoa with Criollo cacao.
- 15 pcs. 50% Milk chocolate.
- 15 pcs. White chocolate with caramel and pecans.
- 15 pcs. White chocolate with pistachios.
- 15 pcs. Gianduja chocolate and Piedmont hazelnuts.
- 15 pcs. Chocolate with almonds and honey.
- 15 pcs. Dark chocolate and Piedmont hazelnuts

Code: Ø7521N  
Bar weight: 75 g  
(65g x 100% cocoa)  
No. bars: 135  
Size: 38 x 34.5 x 130(h) cm



## ASSORTED DISPLAY ANTHOLOGY

**NEW PRODUCT**

Cardboard display (delivered fully-stocked) containing 90 bars:

- 15 pcs. 70% Dark chocolate with Criollo cacao.
- 15 pcs. 85% Dark chocolate with Criollo cacao.
- 15 pcs. 100% cocoa with Criollo cacao.
- 15 pcs. White chocolate with caramel and pecans.
- 15 pcs. Dark chocolate with hazelnuts.
- 15 pcs. 50% Milk chocolate.

Code: Ø7522  
Bar weight: 75 g  
(65g x 100% cocoa)  
No. bars: 90  
Size: 33 x 26.3 x 48(h) cm



## 70% DARK CHOCOLATE WITH CRIOLLO CACAO

**NEW PRODUCT**

70% dark chocolate bar with Criollo cacao, for a delicate flavour.

International code: Ø7523E  
Weight: 75 g  
Pcs. per box: 15  
Dimensions: 18.3 x 8.3 x 1.2 cm  
Display size: 23 x 8.8 x 28.7(h) cm



## 85% DARK CHOCOLATE WITH CRIOLLO CACAO

**NEW PRODUCT**

85% dark chocolate bar with Criollo cacao, for a well-rounded flavour.

International code: Ø7524E  
Weight: 75 g  
Pcs. per box: 15  
Size: 18.3 x 8.3 x 1.2 cm  
Display size: 23 x 8.8 x 28.7(h) cm



## 90% DARK CHOCOLATE WITH CRIOLLO CACAO

**NEW PRODUCT**

90% dark chocolate bar with Criollo cacao, for a bold flavour.

International code: Ø7525E  
Weight: 75 g  
Pcs. per box: 15  
Size: 18.3 x 8.3 x 1.2 cm  
Display size: 23 x 8.8 x 28.7(h) cm



## 100% COCOA WITH CRIOLLO CACAO

**NEW PRODUCT**

100% cocoa mass with Criollo cacao, for a bold flavour.

International code: Ø65Ø2E  
Weight: 65 g  
Pcs. per box: 15  
Size: 18.3 x 8.3 x 1.2 cm  
Display size: 23 x 8.8 x 28.7(h) cm



# ANTHOLOGY - THE BARS



## 38% MILK CHOCOLATE

NEW PRODUCT

Creamy milk chocolate made with 38% aromatic cocoa, giving the bar a delightful flavour.

International code: Ø7527E

Weight: 75 g

Pcs. per box: 15

Dimensions: 18.3 x 8.3 x 1.2 cm

Display size: 23 x 8.8 x 28.7(h) cm



## 50% MILK CHOCOLATE

NEW PRODUCT

A milk chocolate bar with a high percentage of cocoa that combines the creaminess of milk with the intense flavour of cocoa.

International code: Ø7526E

Weight: 75 g

Pcs. per box: 15

Size: 18.3 x 8.3 x 1.2 cm

Display size: 23 x 8.8 x 28.7(h) cm



## WHITE CHOCOLATE, CARAMEL AND PECANS

NEW PRODUCT

Crushed pecans combined with the sweetness of caramel and the smoothness of white chocolate.

International code: Ø7531E

Weight: 75 g

Pcs. per box: 15

Size: 18.3 x 8.3 x 1.2 cm

Display size: 23 x 8.8 x 28.7(h) cm



## WHITE CHOCOLATE AND SALTED SICILIAN PISTACHIOS

NEW PRODUCT

Crushed salted and roasted Sicilian pistachios combined with the sweetness of smooth white chocolate.

International code: Ø753ØE

Weight: 75 g

Pcs. per box: 15

Size: 18.3 x 8.3 x 1.2 cm

Display size: 23 x 8.8 x 28.7(h) cm



## GIANDUJA CHOCOLATE AND PIEDMONT HAZELNUTS

NEW PRODUCT

The delicate flavour of gianduja hazelnut paste, with the crunch of roasted PGI Piedmont hazelnuts.

International code: Ø7528E

Weight: 75 g

Pcs. per box: 15

Dimensions: 18.3 x 8.3 x 1.2 cm

Display size: 23 x 8.8 x 28.7(h) cm



## DARK CHOCOLATE AND PIEDMONT HAZELNUTS

NEW PRODUCT

The intense flavour of 70% dark chocolate, with the crunch of roasted PGI Piedmont hazelnuts.

International code: Ø7529E

Weight: 75 g

Pcs. per box: 15

Size: 18.3 x 8.3 x 1.2 cm

Display size: 23 x 8.8 x 28.7(h) cm



## DARK CHOCOLATE AND CALABRIAN CHILLI PEPPERS

NEW PRODUCT

A dark chocolate bar inspired by the ancient Mayan recipes, which combined chilli pepper with the intense flavour of aromatic cocoa.

International code: Ø7533E

Weight: 75 g

Pcs. per box: 15

Size: 18.3 x 8.3 x 1.2 cm

Display size: 23 x 8.8 x 28.7(h) cm



## CHOCOLATE WITH ALMONDS AND HONEY

NEW PRODUCT

Cocoa sweetened with honey is combined with almond paste and whole Sicilian almonds, for a perfect harmony of flavours.

International code: Ø7532E

Weight: 75 g

Pcs. per box: 15

Size: 18.3 x 8.3 x 1.2 cm

Display size: 23 x 8.8 x 28.7(h) cm



# ANTHOLOGY - SNACKS



## WHITE CHOCOLATE, CARAMEL AND PECANS

NEW PRODUCT

Crushed pecans combined with the sweetness of caramel and the smoothness of white chocolate, in a pocket-sized format.

Code: SNK04

Weight: 35 g

Pcs. per box: 18

Dimensions: 17 x 4 x 1 cm

Display size: 23 x 8.8 x 28.7(h) cm



## GIANDUJA CHOCOLATE AND CRUSHED HAZELNUTS

NEW PRODUCT

The delicate flavour of gianduja hazelnut paste, combined with the crunch of caramelised hazelnuts.

Code: SNK06

Weight: 35 g

Pcs. per box: 18

Size: 17 x 4 x 1 cm

Display size: 23 x 8.8 x 28.7(h) cm



## DARK CHOCOLATE AND CRUSHED HAZELNUTS

NEW PRODUCT

The intense flavour of 70% dark chocolate, with the crunch of crushed caramelised PGI Piedmont hazelnuts.

Code: SNK07

Weight: 35 g

Pcs. per box: 18

Size: 17 x 4 x 1 cm

Display size: 23 x 8.8 x 28.7(h) cm



## MILK CHOCOLATE WITH PUFFED RICE

NEW PRODUCT

A delicious combination of sweet and creamy milk chocolate with the crunch of puffed rice.

Code: SNK05

Weight: 35 g

Pcs. per box: 18

Size: 17 x 4 x 1 cm

Display size: 23 x 8.8 x 28.7(h) cm



# CRIOLLO SINGLE VARIETIES



## WOODEN DISPLAY FOR SINGLE VARIETIES

NEW PRODUCT

Wooden display (delivered empty) with a 48 bar capacity. Recommendation for use:

- 8 pcs. 70% Criollo Puertomar.
- 8 pcs. 70% Criollo Canoabo.
- 8 pcs. 70% Criollo Puertofino.
- 8 pcs. 70% Criollo Chuao.
- 8 pcs. 70% Criollo Porcelana.
- 8 pcs. 70% Criollo Guasare.

Code: ACSØ19

Bar weight: 50 g

Pcs. per box: 1

Size: 39 x 23 x 40(h) cm



## 70% CRIOLLO - PUERTOMAR

NEW PRODUCT

Notes of cereals, spices, almonds, and orange marmalade. The light, floral aroma exalts an excellent roundedness.

- **Just two ingredients:** cocoa beans and brown sugar.
- Gluten free.

Code: CLØ7284

Weight: 50 g

Pcs. per box: 12

Size: 11 x 11 x 1 cm



## 70% CRIOLLO - CANOABO

NEW PRODUCT

Notes of cream, dates, and almonds. Extraordinary roundedness and great persistence.

- **Just two ingredients:** cocoa beans and brown sugar.
- Gluten free.

Code: CLØ7282

Weight: 50 g

Pcs. per box: 12

Size: 11 x 11 x 1 cm



## 70% CRIOLLO - PUERTOFINO

NEW PRODUCT

Notes of caramel, tobacco, walnuts, papaya, forest fruits, mushrooms and dates: a symphony of flavours.

- **Just two ingredients:** cocoa beans and brown sugar.
- Gluten free.

Code: CLØ7283

Weight: 50 g

Pcs. per box: 12

Size: 11 x 11 x 1 cm



## 70% CRIOLLO - CHUAO

NEW PRODUCT

Notes of hazelnut, dulce de leche, lucuma and mamey, for a well-rounded flavour with tremendous sweetness, and a hint of acidity.

- **Just two ingredients:** cocoa beans and brown sugar.
- Gluten free.

Code: CLØ7294

Weight: 50 g

Pcs. per box: 12

Size: 11 x 11 x 1 cm



## 70% CRIOLLO - PORCELANA

NEW PRODUCT

Notes of hazelnut, cream, vanilla, bread crust. Well-rounded, with zero acidity and tremendous sweetness.

- **Just two ingredients:** cocoa beans and brown sugar.
- Gluten free.

Code: CLØ7295

Weight: 50 g

Pcs. per box: 12

Size: 11 x 11 x 1 cm



## 70% CRIOLLO - GUASARE

NEW PRODUCT

Notes of almond, caramel, antique rose and cream. Well-rounded, with zero acidity and tremendous sweetness.

- **Just two ingredients:** cocoa beans and brown sugar.
- Gluten free.

Code: CLØ7296

Weight: 50 g

Pcs. per box: 12

Size: 11 x 11 x 1 cm



Notes of hazelnut, cream, vanilla, bread crust. Well-rounded, with zero acidity and tremendous sweetness.

- **Just two ingredients:** cocoa beans and brown sugar.
- Gluten free.

Code: CLØ7295

Weight: 50 g

Pcs. per box: 12

Size: 11 x 11 x 1 cm

Notes of almond, caramel, antique rose and cream. Well-rounded, with zero acidity and tremendous sweetness.

- **Just two ingredients:** cocoa beans and brown sugar.
- Gluten free.

Code: CLØ7296

Weight: 50 g

Pcs. per box: 12

Size: 11 x 11 x 1 cm



# THE ASSORTED CRIOLLO KIT



## COMPLIMENTARY DISPLAY

A charming kit designed to highlight and raise awareness of the genetic characteristics of the world's rarest and most prized variety of cacao: Criollo. With the purchase of one box of each product type indicated to the side, you'll receive a complimentary elegant display unit to enhance your point of sale, complete with an audio track describing the most important features of Criollo cacao and its history.

Code: KP022



1 BOX 70% CRIOLLO CHUAO 50 g



1 BOX 70% CRIOLLO PORCELANA 50 g



1 BOX 70% CRIOLLO GUASARE 50 g



1 BOX 70% CRIOLLO BLEND 50 g



1 BOX 80% CRIOLLO BLEND 50 g



1 BOX 90% CRIOLLO BLEND 50 g



1 BOX 100% CRIOLLO BLEND 50 g



# THE CRIOLLO BLENDS



## DISPLAY OF ASSORTED CRIOLLO BLENDS

Cardboard display (delivered full) containing 32 bars (50g ea.):

- 8 pcs. 70% Criollo.
- 8 pcs. 80% Criollo.
- 8 pcs. 90% Criollo.
- 8 pcs. 100% Criollo.

Code: CLØ73Ø1  
Bar weight: 50 g  
No. bars: 32  
Size: 17 x 21 x 51(h) cm



## 70% CRIOLLO BLEND

Subtle hints of nuts, mild bitterness. Extraordinary intensity and persistence.

- **Just two ingredients:** cocoa beans and brown sugar.
- Gluten free.

Code: CLØ7297  
Weight: 50 g  
Pcs. per box: 12  
Size: 7.5 x 17.5 x 1 cm



## 80% CRIOLLO BLEND

Intense notes of nuts with long finish. Excellent balance.

- **Just two ingredients:** cocoa beans and brown sugar.
- Gluten free.

Code: CLØ7298  
Weight: 50 g  
Pcs. per box: 12  
Size: 7.5 x 17.5 x 1 cm



## 90% CRIOLLO BLEND

Excellent notes of dried figs, dates and raisins. Endless smoothness.

- **Just two ingredients:** cocoa beans and brown sugar.
- Gluten free.

Code: CLØ7299  
Weight: 50 g  
Pcs. per box: 12  
Size: 7.5 x 17.5 x 1 cm



## 100% CRIOLLO BLEND

Notes of almond and toffee. Excellent sweetness and smoothness.

- **Just one ingredient:** cocoa beans.
- Gluten free.

Code: CLØ73ØØ  
Weight: 50 g  
Pcs. per box: 12  
Size: 7.5 x 17.5 x 1 cm



# SINGLE ORIGIN VARIETIES



## DISPLAY OF ASSORTED SINGLE ORIGIN VARIETIES

Cardboard display (delivered full) containing 30 bars (50g ea.):

- 5 pcs. 70% Trinitario Perù.
- 5 pcs. 70% Trinitario Madagascar.
- 5 pcs. 70% Trinitario Venezuela.
- 5 pcs. 70% Trinitario Colombia.
- 5 pcs. 70% Trinitario Tanzania.
- 5 pcs. 70% Nacional Ecuador.

Code: Ø814Ø

Bar weight: 50 g

No. bars: 30

Dimensions: 25 x 20 x 48(h) cm



## 70% TRINITARIO - PERÙ

Originally from the southern area of the Apurimac river, in the south of Peru. Notes of flowers, caramel and cream. Very delicate, discreetly acidic.

- **Just two ingredients:** cocoa beans and brown sugar.
- Gluten free.

Code: Ø8132

Weight: 50 g

Pcs. per box: 12

Size: 7.5 x 17.5 x 1 cm



## 70% TRINITARIO - MADAGASCAR

From the Sambirano river valley. Intense fragrance with aromatic notes of berries, cashew nuts, pepper and cinnamon, accompanied by a pleasant acidity.

- **Just two ingredients:** cocoa beans and brown sugar.
- Gluten free.

Code: Ø8134

Weight: 50 g

Pcs. per box: 12

Size: 7.5 x 17.5 x 1 cm



## 70% TRINITARIO - VENEZUELA

Obtained from different aromatic cacao hybrids originating in the regions of Merida, Trujillo, Tachira, and Zulia south of Lake Maracaibo.

- **Just two ingredients:** cocoa beans and brown sugar.
- Gluten free.

Code: Ø8135

Weight: 50 g

Pcs. per box: 12

Size: 7.5 x 17.5 x 1 cm



## 70% TRINITARIO - COLOMBIA

A cacao whose name bears all the charm of Colombia's ancient city of Teyuna. Exceptional sweetness and quality.

- **Just two ingredients:** cocoa beans and brown sugar.
- Gluten free.

Code: Ø8136

Weight: 50 g

Pcs. per box: 12

Size: 7.5 x 17.5 x 1 cm



## 70% TRINITARIO - TANZANIA

Domori has selected extraordinary cacao varieties with a bold character from a limited area of Tanzania.

- **Just two ingredients:** cocoa beans and brown sugar.
- Gluten free.

Code: Ø8137

Weight: 50 g

Pcs. per box: 12

Size: 7.5 x 17.5 x 1 cm



## 70% NACIONAL - ECUADOR

The ideal climate and sustainable agricultural practices produce a cacao with a fruity aroma and strong chocolate flavour.

- **Just two ingredients:** cocoa beans and brown sugar.
- Gluten free.

Code: Ø8133

Weight: 50 g

Pcs. per box: 12

Size: 7.5 x 17.5 x 1 cm



# DOMORI TO GO



## DISPLAY OF ASSORTED TO-GO VARIETIES (25 g ea.)

**NEW PRODUCT**

Cardboard display (delivered full) containing 72 bars (25g ea.):

- 24 pcs. Dark chocolate and ginger.
- 24 pcs. Milk chocolate and caramel.
- 24 pcs. Dark chocolate with apricot.

Code: Ø614Ø  
Bar weight: 25 g  
No. bars: 72  
Size: 34 x 16.5 x 21.3(h) cm



## DARK CHOCOLATE AND GINGER

The bold taste of ginger with the exquisite flavour of Domori fine chocolate.

- 100% natural ingredients.

Code: Ø6141      Size: 9 x 9 x 1 cm  
Weight: 25 g      Display size: 10 x 15.5 x 8.5(h) cm  
Pcs. per box: 24



## MILK CHOCOLATE AND CARAMEL

Caramel meets the sweetness of milk chocolate.

- 100% natural ingredients.

Code: Ø6142      Size: 9 x 9 x 1 cm  
Weight: 25 g      Display size: 10 x 15.5 x 8.5(h) cm  
Pcs. per box: 24



## DARK CHOCOLATE WITH APRICOT AND CRUSHED ALMONDS

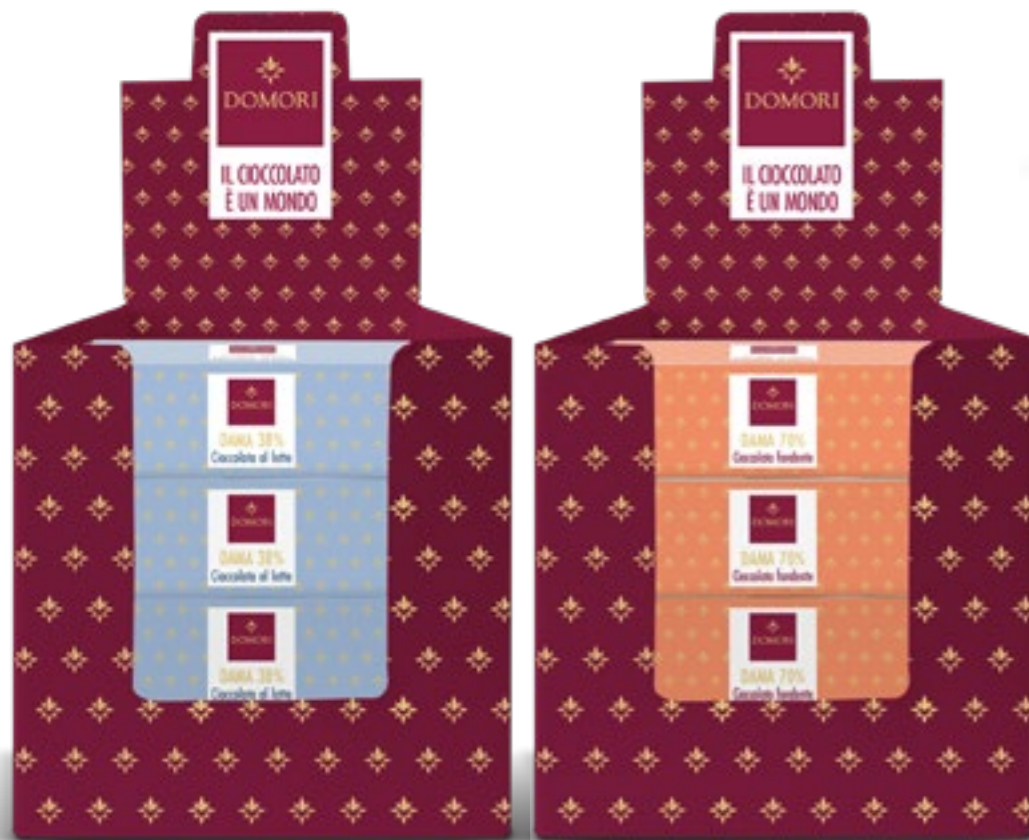
Dark chocolate with dried apricots and crushed almonds.

- 100% natural ingredients.

Code: Ø6144      Size: 9 x 9 x 1 cm  
Weight: 25 g      Display size: 10 x 15.5 x 8.5(h) cm  
Pcs. per box: 24



# DAMAS



## 70% DARK CHOCOLATE

**NEW PRODUCT**

70% dark chocolate damas, ideal for eating at the table, and for preparing desserts in the kitchen.

Code: 15002    Size: 10.5 x 6 x 3.5 cm  
 Weight: 150 g    Display size: 19 x 12.5 x 25.8(h) cm  
 Pcs. per box: 12



## 38% MILK CHOCOLATE

**NEW PRODUCT**

38% milk chocolate damas, ideal for eating at the table, and for preparing desserts in the kitchen.

Code: 15001    Size: 10.5 x 6 x 3.5 cm  
 Weight: 150 g    Display size: 19 x 12.5 x 25.8(h) cm  
 Pcs. per box: 12

# COCOA BEANS



## ROASTED COCOA BEANS

Fermentation, drying and roasting designed to create a unique sensory profile.

- Ideal for pairing with liqueurs, or as a crunchy garnish for spoon desserts and tarts.

Code: KL01200N    Pcs. per box: 10  
 Peso: 100 g    Size: 11.5 x 8 x 4.5 cm



## CHOCOLATE COVERED COCOA BEANS

The persistence and aroma of Trinitario cacao beans coated in the well-rounded flavour of dark chocolate, for a surprising pairing of aromas and textures.

- Ideal for pairing with liqueurs, or as a crunchy garnish for spoon desserts and tarts.

Code: KLV1200    Pcs. per box: 10  
 Weight: 100 g    Size: 11.5 x 8 x 4.5 cm



# DRAGÉES



## DISPLAY OF ASSORTED DRAGÉES

Cardboard display (delivered fully-stocked) containing 48 flow packs (40g ea.) of fruit centres coated in fine Domori cocoa. Recyclable packaging:

- 8 pcs. coated Amarena cherries.
- 8 pcs. coated Oranges.
- 8 pcs. coated Coffee Beans.
- 8 pcs. Coated Coconut.
- 8 pcs. coated Hazelnuts.
- 8 pcs. coated Ginger.

Code: DRESP002  
Bar weight: 40 g  
No. bars: 48  
Size: 32.5 x 24 x 47(h) cm



## SOUR CHERRIES

Amarena cherries coated in dark chocolate and cocoa powder.  
Code: DRAM05 Size: 10 x 13 cm  
Weight: 40 g Display size: 20 x 22 x 15(h) cm  
Pcs. per box: 18



## COCONUT

Coconut coated in milk chocolate.  
Code: DRCO05 Size: 10 x 13 cm  
Weight: 40 g Display size: 20 x 22 x 15(h) cm  
Pcs. per box: 18



## CANDIED ORANGE PEEL

Orange coated in extra dark chocolate.  
Code: DRAR05 Size: 10 x 13 cm  
Weight: 40 g Display size: 20 x 22 x 15(h) cm  
Pcs. per box: 18



## HAZELNUT

Hazelnuts coated in milk chocolate.  
Code: DRNO05 Size: 10 x 13 cm  
Weight: 40 g Display size: 20 x 22 x 15(h) cm  
Pcs. per box: 18



## COFFEE

Coffee beans coated in extra dark chocolate.  
Code: DRCA05 Size: 10 x 13 cm  
Weight: 40 g Display size: 20 x 22 x 15(h) cm  
Pcs. per box: 18



## CANDIED GINGER

Ginger coated in extra dark chocolate.  
Code: DRZE05 Size: 10 x 13 cm  
Weight: 40 g Display size: 20 x 22 x 15(h) cm  
Pcs. per box: 18



# BULK CHOCOLATES



## NAPOLITAINS 80% CRIOLLO

Code: 00212  
Weight: 1 kg (approx. 185 napolitains, 4.7 g ea.)



## NAPOLITAINS 42% MILK LATTE

Bulk code: 00220  
Weight: 1.88 kg (approx. 347 napolitains, 4.7 g ea.)



## NAPOLITAINS APURIMAC

Code: 00144  
Weight: 1 kg (approx. 185 napolitains, 4.7 g ea.)



## NAPOLITAINS SAMBIRANO

Code: 00145  
Weight: 1 kg (approx. 185 napolitains, 4.7 g ea.)



## NAPOLITAINS SUR DEL LAGO

Code: 00146  
Volume: 1 kg (approx. 185 napolitains, 4.7 g ea.)



## NAPOLITAINS CRIOLLO 100%

Code: 00207  
Weight: 1 kg (approx. 185 napolitains, 4.7 g ea.)



## NAPOLITAINS 70% DARK CHOCOLATE

Bulk code: 00221  
Weight: 1.88 kg (approx. 347 napolitains, 4.7 g ea.)



## NAPOLITAINS TEYUNA

Code: 00148  
Weight: 1 kg (approx. 185 napolitains, 4.7 g ea.)



## NAPOLITAINS MOROGORO

Code: 00147  
Weight: 1 kg (approx. 185 napolitains, 4.7 g ea.)



## NAPOLITAINS ARRIBA

Code: 00142  
Volume: 1 kg (approx. 185 napolitains, 4.7 g ea.)

NEW PRODUCT

**1KG MIXED BAG SINGLE ORIGIN NAPOLITAINS** (APPROX. 185 NAPOLITAINS) Code:10201



# BULK CHOCOLATES



## \* CLASSIC GIANDUJOTTI

Bulk code: GD0101  
Weight: 3kg (equal to approx. 300 gianduiotti)



## \* CRIOLLO GIANDUJOTTI

**NEW PRODUCT**  
Bulk code: GD0104  
Weight: 3kg (equal to approx. 300 gianduiotti)



## \* CLASSIC CREMINI

**NEW WRAPPER**

Bulk code: CM001  
Weight: 3kg (equal to approx. 375 cremini)



## \* PISTACHIO CREMINI

Bulk code: CM003  
Weight: 3kg (equal to approx. 375 cremini)



## TRUFFLED ALMOND

**NEW PRODUCT**

Bulk code: COM00700  
Weight: 700g (equal to approx. 175 truffled almonds)



## CLASSIC TRUFFLES

Bulk code: TN3000  
Weight: 3kg (equal to approx. 214 truffles).



## TIRAMISÙ TRUFFLES

Bulk code: TT3000  
Weight: 3kg (equal to approx. 214 truffles).



## RUM CUNEESI

contains alcohol  
Bulk code: CN3000  
Weight: 3kg (equal to approx. 130 cuneesi).



## BACI DI DAMA

Bulk code: BD002  
Weight: 3kg (equal to approx. 200 baci di dama).



## CUOR DI CRIOLLO

Bulk code: CF3000  
Weight: 3kg (equal to approx. 375 cuor di Criollo).

\* 15 transparent bags in each box.

POP display products.



## CARDBOARD DISPLAY FOR BULK PRODUCTS

Each box of products illustrated comes with a full display unit and refill bags, for a total weight of 3 kg.



## WOODEN DISPLAY FOR BULK PRODUCTS

A durable display unit.

Code: ACS018  
Size: 50 x 15.5 x 6 cm



# HOT CHOCOLATE AND COCOA POWDER



## DRINKING CHOCOLATE IN A TIN BOX

**NEW PRODUCT**

Soluble mix for hot and cold milk in a 500g tin. A tasty treat to enjoy at breakfast or for snack breaks. Quick and easy to prepare with just a few ingredients, all of excellent quality.

Code: HC002 Pcs. per box: 6  
Weight: 500 g Size: Ø10.2 x 12(h) cm



## COCOA POWDER IN A TIN CONTAINER

**NEW PRODUCT**

Cocoa powder for preparing desserts in the kitchen.  
Code: ØØ62Ø Pcs. per box: 12  
Weight: 250 g Size: Ø10.2 x 8.2(h) cm



## PACK OF 6 HOT CHOCOLATE SACHETS

Box of 6 single-dose sachets. Immense pleasure, unmistakable flavour. Quick and easy to prepare with just a few ingredients, all of excellent quality.  
Code: HC001 Pcs. per box: 6  
Weight: 180 g Size: 13 x 3.5 x 9 cm



## DARK HOT CHOCOLATE 300g

Hot chocolate for bars and restaurants. Powder mix 300 g.  
Code: ILBØØ9N Pcs. per box: 10  
Weight: 300 g Size: 15.8 x 7 x 25 cm



# HOT CHOCOLATE



## DARK HOT CHOCOLATE

30g powder mix for a creamy hot chocolate beverage with an intense cocoa flavour.

Code: ILB010N  
Weight: 30 g  
Pcs. per box: 100  
Size: 13 x 9 cm



## MILK HOT CHOCOLATE

30g powder mix for a delightfully creamy milk hot chocolate beverage.

Code: 21587N  
Weight: 30 g  
Pcs. per box: 100  
Size: 13 x 9 cm



## ORANGE AND CINNAMON HOT CHOCOLATE

30g powder mix that combines the sweetness of orange with cinnamon, for a classic wintertime combination.

Code: 21588N  
Weight: 30 g  
Pcs. per box: 25  
Size: 13 x 9 cm



## CHILLI PEPPER HOT CHOCOLATE

30g powder mix for a slightly spicy hot chocolate beverage that brings out the aromatic nuances of the cocoa.

Code: 21589N  
Weight: 30 g  
Pcs. per box: 25  
Dimensions: 13 x 9 cm

## HOME PREPARATION



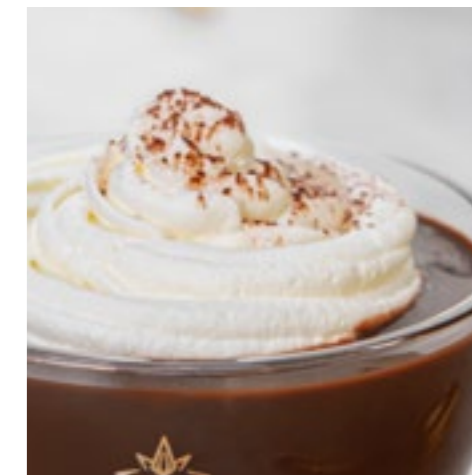
1. Mix the contents of one sachet (30 g) with 100 ml milk.



2. Heat in a saucepan until the desired density is reached.



3. Ready to serve.



4. Garnish as desired with whipped cream and cocoa powder.

## PREPARATION WITH A HOT CHOCOLATE MACHINE



1. Pour the contents of one bag (300 g) into a container with 1 L milk.



2. Dissolve the mixture with a whisk to prevent lumps from forming.



3. Cook in the hot chocolate machine for 30 minutes at 90°. Afterwards, decrease the temperature to 55-60°C.



4. Consume within 24 hours.



# INFUSIONS



## COCOA GRUÈ INFUSIONS

Pure Single Origin Sambirano cocoa bean grounds, with no added flavours or sugar, all in practical single-dose filter bags, for an infusion with an unmistakable aroma.

Code: INF01  
Filters: 20  
Weight: 2 g each.  
Pcs. per box: 6  
Size: 8.5 x 8.5 x 8.5 cm



## COCOA GRUÈ AND SPICE INFUSIONS

Pure Single Origin Sambirano cocoa bean grounds and a fragrant bouquet of spices, with no added flavours or sugar, all in practical single-dose filter bags, for an infusion with an unmistakable aroma.

Code: INF02  
Filters: 20  
Weight: 2 g each.  
Pcs. per box: 6  
Size: 8.5 x 8.5 x 8.5 cm



# SPREADS



## GIANDUJA CREAM - 30g

Fine cocoa and 48% Piedmont PGI hazelnuts.  
Milk free recipe. Single-portion format.

Code: CG0201B  
Weight: 30 g  
Pcs. per box: 24  
Size: Ø5 x 4.5 cm



## GIANDUJA CREAM - 200g

Spread made with fine cocoa and 48%  
PGI Piedmont hazelnuts. Milk free recipe.

Code: CG0200B  
Weight: 200 g  
Pcs. per box: 12  
Size: Ø8 x 8.5 cm



## PISTACHIO CREAM - 200g

Spreadable cream made with pistachio paste.

Code: CP0200B  
Weight: 200 g  
Pcs. per box: 12  
Size: Ø8 x 8.5 cm



# TIN GIFT BOXES



## GIANDUJOTTI IN A TIN GIFT BOX

NEW PRODUCT

A reusable collector's tin containing classic giandujotti reinvented by Domori using fine cocoa and PGI Piedmont hazelnuts.

RG061 Pcs. per box: 9  
Weight: 100 g Size: Ø8.8 x 11 cm



## CREMINI IN A TIN GIFT BOX

NEW PRODUCT

A reusable collector's tin containing classic cremini with just a pinch of added salt to bring out the aroma of the fine cocoa.

RG063 Pcs. per box: 9  
Weight: 100 g Size: Ø8.8 x 11 cm



## CLASSIC TRUFFLES IN A TIN GIFT BOX

NEW PRODUCT

A reusable collector's tin containing one of our most delicious products: classic hazelnut truffles.

RG062 Pcs. per box: 9  
Weight: 80 g Size: Ø8.8 x 11 cm



## GIANDUJOTTI AND CLASSIC TRUFFLES IN A TIN GIFT BOX

NEW PRODUCT

A reusable collector's tin containing giandujotti and classic truffles.

Code: RG058 Pcs. per box: 4  
Weight: 200 g Size: Ø12 x 16 cm



## GIANDUJOTTI AND CREMINI IN A TIN GIFT BOX

NEW PRODUCT

A reusable collector's tin containing two iconic products with PGI Piedmont hazelnut chocolates.

Code: RG060 Pcs. per box: 4  
Weight: 200 g Size: Ø12 x 16 cm



## CLASSIC TRUFFLES AND SINGLE ORIGIN NAPOLITAINS IN A TIN GIFT BOX

NEW PRODUCT

A reusable collector's tin containing classic truffles and single origin dark chocolate napolitains.

Code: RG059 Pcs. per box: 4  
Weight: 200 g Size: Ø12 x 16 cm



## TIN GIFT BOXES



### ASSORTED TIN GIFT BOX

NEW PRODUCT

A collector's tin ideal for discovering the exceptional quality of the products distributed by Domori. Contents: 1 box of baci di dama (lady's kisses), 1 bar 70% Criollo Blend,



1 bar 80% Criollo Blend, 1 Gianduja cream 30g, and 1 package of classic Pintaudi rusks. Code: RG057 Weight: 450g Pcs. per Box: 2 Dimensions: 25 x 18.5 x 15 cm

## BAGS WITH TOPPERS



### BAG OF CLASSIC GIANDUJOTTI

NEW PRODUCT

A 200g bag of classic giandujotti with PGI Piedmont hazelnuts, to be enjoyed at the table or given as a gift.

Code: RG068  
Weight: 200 g  
Pcs. per box: 10  
Size: 7.5 x 11 x 2.2 (h) cm



### BAG OF CRIOLLO GIANDUJOTTI

NEW PRODUCT

A 200g bag of dark chocolate giandujotti with Criollo cocoa, to be enjoyed at the table or given as a gift.

Code: RG067  
Weight: 200 g  
Pcs. per box: 10  
Size: 7.5 x 11 x 2.2 (h) cm



### BAG OF CLASSIC TRUFFLES

NEW PRODUCT

A 180g bag of classic truffles, to be enjoyed at the table or given as a gift.

Code: RG069  
Weight: 180 g  
Pcs. per box: 10  
Size: 9 x 9.5 x 18 (h) cm



### BAG OF TIRAMISÙ TRUFFLES

NEW PRODUCT

A 180g bag of tiramisù truffles, to be enjoyed at the table or given as a gift.

Code: RG070  
Weight: 180 g  
Pcs. per box: 10  
Size: 9 x 9.5 x 18 (h) cm



# CHOCOLATE COATED FRUIT



## AMARENA CHERRIES COATED IN DARK CHOCOLATE

NEW PRODUCT

Dragées with amarena cherry centres coated in dark chocolate and cocoa powder made from prestigious and aromatic fine cocoa. Reusable tin container.

Code: RG066  
Weight: 200 g  
Pcs. per box: 6  
Size: Ø16 x 4.5 cm



## ORANGE COATED IN DARK CHOCOLATE

NEW PRODUCT

Dragées with a orange centres coated in fine dark cocoa. Reusable tin container.

Code: RG064  
Weight: 200 g  
Pcs. per box: 6  
Size: Ø16 x 4.5 cm



## HAZELNUTS COATED IN MILK CHOCOLATE

NEW PRODUCT

Exquisite hazelnuts coated in milk chocolate with a high percentage of cocoa to exalt the quality of the raw material. Reusable tin container.

Code: RG065  
Weight: 200 g  
Pcs. per box: 6  
Size: Ø16 x 4.5 cm



## TINS IN AN ASSORTED BOX

NEW PRODUCT

Assorted box of tins containing:

- 2 giandujotti and classic truffles in a tin gift box.
- 2 giandujotti and cremini in a tin gift box.
- 2 classic truffles and single origin napolitains in a tin gift box.
- 2 giandujotti in a tin gift box.
- 2 cremini in a tin gift box.
- 2 classic truffles in a tin gift box.
- 2 amarena cherries coated in dark chocolate.
- 2 orange coated in dark chocolate.
- 2 hazelnuts coated in milk chocolate.

Code: AS018



## THE GIFT PACKS - THE GREAT CLASSICS



### GREAT CLASSICS 8 - 580g

**NEW PRODUCT**

A precious cardboard gift box containing the very best traditional Piedmontese chocolates.

The gift box contains:

- 16 Giandujotti.
- 18 Pistachio cremini.
- 18 Classic cremini.
- 28 Single Origin napolitains.

Code: RGØ39B

Weight: 580 g

Pcs. per box: 2

Size: 33.5 x 17.6 x 3.2 (h) cm

### GREAT CLASSICS 6 - 420g

**NEW PRODUCT**

A precious cardboard gift box containing the very best traditional Piedmontese chocolates.

The gift box contains:

- 16 Giandujotti.
- 18 Pistachio cremini.
- 18 Classic cremini.

Code: RGØ38B

Weight: 420 g

Pcs. per box: 2

Size: 25 x 17.6 x 3.2 (h) cm

## THE GIFT PACKS - HAZELNUT SUPREME



### HAZELNUT SUPREME L - 450g

A cardboard gift box containing the very best traditional Piedmontese chocolates.

The gift box contains:

- Giandujotti.
- Classic cremini.
- Classic truffles.
- Tiramisù truffles.

Code: RGØ56

Weight: 450 g

Pcs. per box: 4

Size: 28 x 20.5 x 4.7 (h) cm

### HAZELNUT SUPREME M - 250g

A cardboard gift box containing the very best traditional Piedmontese chocolates.

The gift box contains:

- Giandujotti.
- Classic cremini.
- Classic truffles.
- Tiramisù truffles.

Code: RGØ55

Weight: 250 g

Pcs. per box: 2

Size: 24.4 x 17 x 4.7 (h) cm



## THE GIFT PACKS - SOMETHING SURPRISING



### GOURMET COLLECTION IN A WOODEN BOX

A kit for sampling the best dark chocolate, and for creating decorations on top of sweets by grating chocolate shavings and pure cocoa beans.

The gift box contains:

- 1 bar (75 g) 70% Dark chocolate.
- 1 bar (75 g) 80% Dark chocolate.
- 1 bar (75 g) 90% Dark chocolate.
- 1 sachet (100g) Cocoa beans.
- 1 micro-perforated stainless steel grater.

Code: RGØ51N

Pcs. per box: 1

Size: 39.5 x 17.5 x 4.5 (h) cm



### 30 SINGLE ORIGIN NAPOLITAINS

the gift box contains 30 Napolitains (4.7 g ea.), including:

- 5 pcs. Venezuela.
- 5 pcs. Colombia.
- 5 pcs. Madagascar.
- 5 pcs. Tanzania.
- 5 pcs. Perù.
- 5 pcs. Ecuador.

Code: RGØ33N

Weight: 140 g

Pcs. per box: 6

Size: 23.4 x 5.5 x 3 (h) cm



### MAXI GIANDUJOTTO

The traditional giandujotto in an extra large format.

Code: GDØ11Ø

Weight: 250 g

Pcs. per box: 12

Size: 13.5 x 5 x 7 (h) cm



### MAXI CREMINO

An original gift idea for gianduja cream lovers.

Code: CMØ11Ø

Weight: 300 g

Pcs. per box: 8

Size: 8 x 8 x 4.5 (h) cm

## LITTLE THOUGHTS



### THANK YOU CARD - 2 NAPOLITAINS 70%

NEW PRODUCT

A small gift to allow your guests to discover aromatic cocoa.

Code: RGØ28C Pcs. per box: 50

Weight: 4.7 g Size: 7 x 3.5 x 0.5 (h) cm



### THANK YOU BOX - 2 GIANDUJOTTI

A small gift to introduce your guests to the world of Piedmontese chocolates.

Code: RGØ2Ø Pcs. per box: 50

Weight: 18 g Size: 5 x 4 x 2.5 (h) cm



### PIEDMONT SELECTION POUCH

Assorted classic cremini, classic giandujotti, black truffles, and dark chocolate napolitains.

Code: CHP253

Weight: 250 g

Pcs. per box: 6

Size: 9.5 x 6 x 23 (h) cm



### BACI DI DAMA BOX

Two crumbly shortbread biscuits made from Italian hazelnuts are joined by a cream made from single-origin Tanzania extra dark chocolate.

Code: BDØØ1

Weight: 90 g

Pcs. per box: 12

Size: 9 x 4.2 x 19 (h) cm



### 4 GIANDUJOTTI

Tasting kit containing 4 classic giandujotti.

Code: RGØ44

Weight: 30 g

Pcs. per box: 20

Size: 7.5 x 11 x 2.2 (h) cm



### 12 NAPOLITAINS

Tasting kit containing 12 assorted Single Origin dark chocolates.

Code: RGØ45

Weight: 55 g

Pcs. per box: 20

Size: 7.5 x 11 x 2.2 (h) cm



# QUANTUM



## QUANTUM DARK CHOCOLATE WITH CUTTING BOARD AND KNIFE

500g block of aromatic dark chocolate with natural wood cutting board and chocolate knife.

The gift box contains:

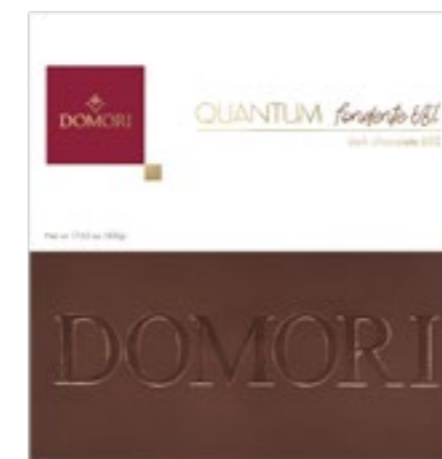
- 68% dark chocolate block.
- Reusable wooden cutting board.
- Knife.

Code: GQ03008

Weight: 500 g

Pcs. per box: 1

Size: 40.5 x 23.5 x 4 (h) cm



## 68% DARK CHOCOLATE

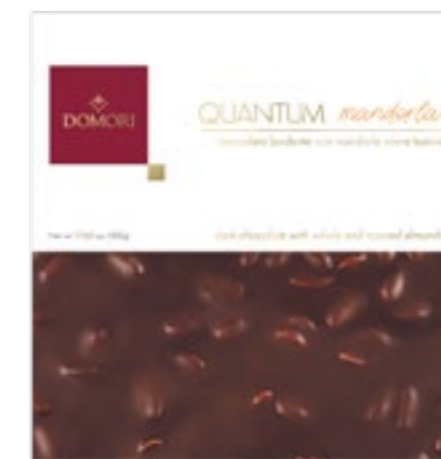
68% Aromatic dark chocolate from Tanzania.

Code: QL07620

Weight: 500 g

Pcs. per box: 4

Size: 16.5 x 17.3 x 2.5 (h) cm



## QUANTUM DARK CHOCOLATE AND ALMONDS

68% Dark chocolate with whole roasted almonds.

Code: QL07622

Weight: 500 g

Pcs. per box: 4

Size: 16.5 x 17.3 x 2.5 (h) cm



## QUANTUM MILK CHOCOLATE AND HAZELNUTS

Milk chocolate with whole roasted PGI Piedmont hazelnuts.

Code: QL07621

Weight: 500 g

Pcs. per box: 4

Size: 16.5 x 17.3 x 2.5 (h) cm



## QUANTUM WHITE CHOCOLATE AND PISTACHIOS

White chocolate with whole, roasted and slightly salted pistachios.

Code: QL07623

Weight: 500 g

Pcs. per box: 4

Size: 16.5 x 17.3 x 2.5 (h) cm



# MESSAGES OF LOVE



## GIANDUJA HEART

Gianduja chocolate heart in an original envelope-shaped gift box.

- The gift box contains a QR code that consumers can use to record a voice message. The person who receives the gift can then scan the QR code to listen to the voice message.

Code:RG008B  
Weight: 250 g  
Pcs. per box: 6  
Size: 14x15x3 cm



## HEART-SHAPED TIN WITH CRIOLLO HEART

**NEW PRODUCT**

A reusable collector's tin containing 70% Cuor di Criollo dark chocolates.

Code:RG072  
Weight: 250 g  
Pcs. per box: 6  
Size: 17 x 16 x 3.7 cm



## HEART-SHAPED TIN WITH GIANDUJOTTI

**NEW PRODUCT**

A reusable collector's tin containing classic giandujotti reinvented by Domori using fine cocoa and PGI Piedmont hazelnuts.

Code:RG071  
Weight: 250 g  
Pcs. per box: 6  
Size: 17 x 16 x 3.7 cm



# CHRISTMAS



## PANDORO WITH CHOCOLATE DROPS

NEW PRODUCT

The soft and naturally leavened Pandoro dough is enriched with dark and milk chocolate drops to satisfy even the most demanding palates. Wrapped in two different colours.

Code: PD005  
Weight: 1 kg  
Pcs. per box: 6  
Expiry: 8 months



## CLASSIC PANETTONE

NEW PRODUCT

The Domori Panettone in its classic version. The dough is made with natural yeast and is enriched with dark chocolate drops and Agrimontana candied orange peel. The glaze is made with Piedmont PGI Hazelnuts, and is enriched with almonds and sugar grains.

Code: PN013  
Weight: 1 kg each  
Pcs x Box: 6  
Size: 21,5 x 25 x 15 (h) cm  
Expiry: 8 months







3 X



3 X



1 X



1 X

### CLASSIC PANETTONE WITH CHOCOLATE DROPS AND ORANGE

NEW PRODUCT

The Domori Panettone in its classic version. The dough is made with natural yeast and is enriched with dark chocolate drops and candied orange peel.

Code: PNØ11  
Weight: 1 kg  
Pcs. per box: 6  
Size: 19 x 19 x 20.5 (h) cm  
Expiry: 5 months



### PANETTONE FILLED WITH GIANDUJA CREAM

NEW PRODUCT

A Panettone to pay tribute to Piedmont and its chocolate tradition: soft dough filled with Domori's delicious gianduja cream.

Code: PNØ12  
Weight: 1 kg  
Pcs. per box: 6  
Size: 19 x 19 x 20.5 (h) cm  
Expiry: 5 months



### ASSORTED CHRISTMAS BOX

NEW PRODUCT

An assorted christmas box containing:

- 3 boxed classic panettone with chocolate drops.
- 3 boxed panettone filled with gianduja.

- 1 Pandoro with pink wrapping.
- 1 Pandoro with light blue wrapping.

Code: PNDØØ1





# CHRISTMAS



## ADVENT CALENDAR

The calendar contains: Code: CA005  
 • 5 classic cremini, Weight: 185 g  
 • 5 pistachio cremini, Pcs. per box: 6  
 • 5 milk chocolate napolitains, Dimensions: 35.5 x 22.5 x 2.2 (h) cm  
 • 4 dark chocolate napolitains,  
 • 5 giandujotti.



## NOUGAT COATED IN DARK CHOCOLATE

Brittle nougat with toasted almonds covered in 72% Sur del Lago dark chocolate.

Code: TO002 Pcs. per box: 12  
 Weight: 100 g Size: 22 x 5.5 x 2.8 (h) cm



## GIANDUJA NOUGAT

Soft nougat with toasted hazelnuts and delicate gianduja chocolate.

Code: TO001 Pcs. per box: 12  
 Weight: 100 g Size: 22 x 5.5 x 2.8 (h) cm



## 60% DARK CHOCOLATE STAR

Nothing says Merry Christmas to every dreamer like a dark chocolate star.

Code: ST001 Pcs. per box: 6  
 Weight: 130 g Size: 24 x 10 x 4.5 (h) cm



## CHRISTMAS ORNAMENT BALL

A small gift to decorate the Christmas tree. Contains giandujotti and dark chocolate napolitains.

Code: PAL001 Pcs. per box: 10  
 Bar weight: 100 g Size: Ø8 cm



## BULK PRODUCTS FOR CONFECTIONERY USE



### **COCOA BEANS COATED IN 62% DARK CHOCOLATE**

**NEW PRODUCT**

Transparent bag of cocoa bean dragées coated in dark chocolate.

Code: SFKLØ3

Weight: 500 g

Pcs. per box: 6

Size: 10 x 5.5 x 20 (h) cm



### **COFFEE BEANS COATED IN 72% DARK CHOCOLATE**

**NEW PRODUCT**

Transparent bag of coffee bean dragées coated in dark chocolate made from the finest cocoa beans.

Code: SFCAØ3

Weight: 500 g

Pcs. per box: 6

Size: 10 x 5.5 x 20 (h) cm



### **HAZELNUTS COATED IN 50% MILK CHOCOLATE**

**NEW PRODUCT**

Transparent bag of hazelnut dragées coated in milk chocolate with a high percentage of cocoa.

Code: SFNOØ3

Weight: 500 g

Pcs. per box: 6

Size: 10 x 5.5 x 20 (h) cm



### **ORANGE COATED IN 72% DARK CHOCOLATE**

**NEW PRODUCT**

Transparent bag of dragées with orange centres coated in fine dark cocoa.

Code: SFARØ3

Weight: 500 g

Pcs. per box: 6

Size: 10 x 5.5 x 20 (h) cm



# BULK PRODUCTS FOR CONFECTIONERY USE



## GIANDUJA BRICK WITH HAZELNUTS

An individually foil-wrapped chocolate block.  
Code: MTØØ1 Pcs. per box: 2  
Weight: 650 g Size: 22.5 x 6 (h) cm



## BLOCK OF CREMINO BRICK

An individually wrapped block of chocolate in a food bag.  
Code: MTØØ2 Pcs. per box: 1  
Weight: 1.5 kg Size: 25 x 9 (h) cm



## ORANGE STRIPS COATED IN DARK CHOCOLATE

Loose strips packaged in sealed trays.  
Code: SFFAØ1 Pcs. per box: 2  
Weight: 1 kg



## GINGER STICKS COATED IN DARK CHOCOLATE

Loose sticks packaged in sealed trays.  
Code: SFZEØ1 Pcs. per box: 2  
Weight: 1 kg



## 68% DARK CHOCOLATE

A block of dark chocolate in flowpack.  
Code: QLØ763ØN Pcs. per box: 3  
Weight: 500 g Size: 16 x 16 x 1.5 (h) cm



## MILK CHOCOLATE WITH HAZELNUTS

A block of milk chocolate with hazelnuts in flowpack.  
Code: QLØ7631N Pcs. per box: 3  
Weight: 500 g Size: 16 x 16 x 1.5 (h) cm



## 68% DARK CHOCOLATE WITH ALMONDS

A block of dark chocolate with almonds in flowpack.  
Code: QLØ7632N Pcs. per box: 3  
Weight: 500 g Size: 16 x 16 x 1.5 (h) cm



## WHITE CHOCOLATE WITH SALTED PISTACHIOS

A block of white chocolate with salted pistachios in flowpack.  
Code: QLØ7633N Pcs. per box: 3  
Weight: 500 g Size: 16 x 16 x 1.5 (h) cm



## DARK CHOCOLATE WITH ALMONDS AND CANDIED FRUIT

A chocolate block individually packaged in a sealed tray.  
Code: LCØ11  
Weight: 800 g  
Pcs. per box: 2  
Size: 26.5 x 19 x 1.5 (h) cm



## MILK CHOCOLATE WITH WHOLE HAZELNUTS

A chocolate block individually packaged in a sealed tray.  
Code: LCØ10  
Weight: 800 g  
Pcs. per box: 2  
Size: 26.5 x 19 x 1.5 (h) cm



## WHITE CHOCOLATE WITH SALTED PISTACHIOS

A chocolate block individually packaged in a sealed tray.  
Code: LCØ12  
Weight: 800 g  
Pcs. per box: 2  
Size: 26.5 x 19 x 1.5 (h) cm



## COCOA AND HAZELNUT CREAM

Spread made with fine cocoa and 13% Roman hazelnuts. Suitable for garnishing croissants, pies, crêpes, and ice creams.  
Code: CGØ35B  
Weight: 3.5 kg  
Pcs. per box: 2  
The ACSØ3Ø doser is available depending on the current sales conditions.



# CHOCOLATE CHIPS



## IVORY COAST 66% DARK CHOCOLATE

Dark chocolate couverture in 2 cm pastilles.  
Code: ØØ982  
Weight: 1 kg  
Pcs. per box: 6



## IVORY COAST 38% MILK CHOCOLATE

Milk chocolate couverture in 2 cm pastilles.  
Code: ØØ98Ø  
Weight: 1 kg  
Pcs. per box: 6



## WHITE CHOCOLATE

White chocolate couverture in 2 cm pastilles.  
Code: ØØ726  
Weight: 1 kg  
Pcs. per box: 4



# CRIOLLO CHOCOLATE DROPS



## RECOMMENDATIONS FOR USE - CRIOLLO PRO

1 kg bag	% Cocoa	Fluidity	Peels	Garnish	Couverture	Decorations	Mousses	Ice cream	Baked goods
					Manual couverture				
Ocumare	100%	🔴🔴🔴🔴	✗	✗	✗	✗	✓	✓	✗
Ocumare	72%	🟡🟡🟡🟡	✓	✓	✓	✓	✓	✓	✓
Ocumare	38%	🟡🟡🟡	✓	✓	✓	✓	✓	✓	✓
Chuao	100%	🔴🔴🔴🔴	✗	✗	✗	✗	✓	✓	✗
Chuao - ganache	75%	🟡🟡	✗	✗	✗	✗	✓	✓	✓
Canoabo	62%	🟡🟡	✓	✓	✓	✓	✓	✓	✓

Legend: 🔴 low fluidity 🟡 medium-low fluidity 🟡 medium fluidity 🔴 medium-high fluidity 🔴 high fluidity  
 ✓ Recommended ✗ Possible ✗ Not recommended



**100% CRIOLLO OCUMARE**  
 Single-variety dark chocolate pastilles.  
 Code: CP100OC Weight: 1 kg Pcs. per box: 3



**72% CRIOLLO OCUMARE**  
 Single-variety dark chocolate pastilles.  
 Code: CP72OC Weight: 1 kg Pcs. per box: 3



**38% CRIOLLO OCUMARE**  
 Single-variety milk chocolate pastilles.  
 Code: CP38OC Weight: 1 kg Pcs. per box: 3



**100% CRIOLLO CHUAO**  
 Single-variety dark chocolate pastilles.  
 Code: CP100CH Weight: 1 kg Pcs. per box: 3



**75% CRIOLLO CHUAO**  
 Single-variety dark chocolate pastilles.  
 Code: CP75CH Weight: 1 kg Pcs. per box: 3



**62% CRIOLLO CANOABO**  
 Single-variety dark chocolate pastilles.  
 Code: CP62CA Weight: 1 kg Pcs. per box: 3

\*Images for illustrative purposes. The products will have an aluminised wrapper.



# THE ASSORTED CORNER



Assortment image for illustrative purposes only.

Display made of paper, plastic material and aluminium. Code: KP016  
It is delivered mounted, empty, on a platform with protective packaging. The crowner must be applied by the customer at the time of installation with double-sided adhesive tape already positioned. Size: 80 x 39 x 179(h) cm

	CODE	NAME	WEIGHT IN gPCS. per BOX		QTY
<b>SHELF 1</b>	RG064	<b>NEW PRODUCT</b> Tin of orange dragées	200	6	1
	RG066	<b>NEW PRODUCT</b> Tin of amarena cherry dragées	200	6	1
	RG065	<b>NEW PRODUCT</b> Tin of hazelnut dragées	200	6	1
	RG068	<b>NEW PRODUCT</b> Bag of classic giandujotti with topper	200	10	2
	RG069	<b>NEW PRODUCT</b> Bag of classic truffles with topper	180	10	2
<b>SHELF 2</b>	07523	<b>NEW PRODUCT</b> 70% dark chocolate with Criollo cacao	75	15	2
	07524	<b>NEW PRODUCT</b> 85% dark chocolate with Criollo cacao	75	15	2
	06502	<b>NEW PRODUCT</b> 100% cocoa with Criollo cacao	75	15	2
	07527	<b>NEW PRODUCT</b> 38% milk chocolate	75	15	2
	07528	<b>NEW PRODUCT</b> Gianduja chocolate and hazelnuts	75	15	1
	07530	<b>NEW PRODUCT</b> White chocolate and Sicilian pistachios	75	15	1
	07531	<b>NEW PRODUCT</b> White chocolate, caramel and pecans	75	15	2
	07533	<b>NEW PRODUCT</b> Dark chocolate and Calabrian chilli pepper	75	15	1
<b>SHELF 3</b>	08134	70% Madagascar	50	12	1
	08135	70% Venezuela	50	12	1
	08132	70% Perù	50	12	1
	08133	70% National Ecuador	50	12	1
<b>SHELF 4</b>	HC001	Hot chocolate mix	180	6	1
	KL01200N	Cocoa beans	100	10	1
	KLV1200	Cocoa beans covered in dark chocolate	100	10	1
	CHP253	Piedmont selection	250	6	2
<b>SHELF 5</b>	CG0200B	Gianduja spread	200	12	1
	CP0200B	Pistachio spread	200	12	1
	CM0110	Maxi cremino	300	8	1
	GD0110	Maxi giandujotto	250	12	1

# MATERIAL FOR RETAILERS



## STICKERS WITH LOGO

Code: ACS003 Labels per roll: 2200 Pcs. per box: 1



## THERMAL BAGS

Code: SHOPTER01 Size: 36 x 26 cm Pcs. per box: 1



## BAG WITH LOGO

Code: SHOPDOM18X20 Size: 18 x 20 cm  
Pcs per Blister Pack: 25



## CORIAN TASTING BOARD

Code: ACS006B Size: 6.5 x 35 x 0.5 cm Pcs. per box: 4



## PAPER CUPS FOR HOT CHOCOLATE

Code: ACS009 Size: 7 x 9 cm Pcs per Row: 50



## CERAMIC HOT CHOCOLATE MUG

Code: THC006 Capacity: 18 cl Pcs. per box: 6



# MATERIAL FOR RETAILERS



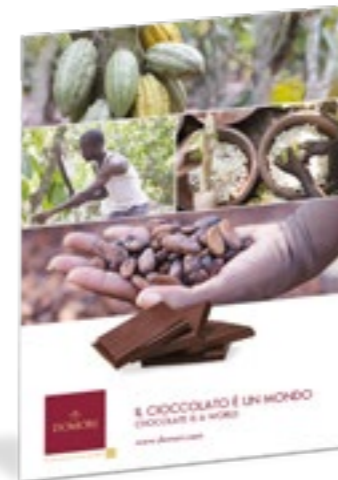
**FABRIC SHOPPING BAG WITH LOGO**

Code: SHOPTES03



**HOT CHOCOLATE COUNTER SIGN**

Code: ACS014 Size: 21 x 29.7 cm



**COUNTER AND WINDOW SIGN**

Code: ACS010 Size: 42 x 29.7 cm Pcs. per box: 1



**GIANDUJA HEART COUNTER AND WINDOW SIGN**

Counter sign included in the Gianduja Heart box RG008B. Size: 12 x 10 x 31 cm



**APRON WITH LOGO**

Code: ACS013 Pcs. per Box: 4



**T-SHIRT WITH LOGO**

Size S: ACS012 Size L: ACS016  
Size M: ACS015 Pcs. per Box: 1



**HOT CHOCOLATE MENU**

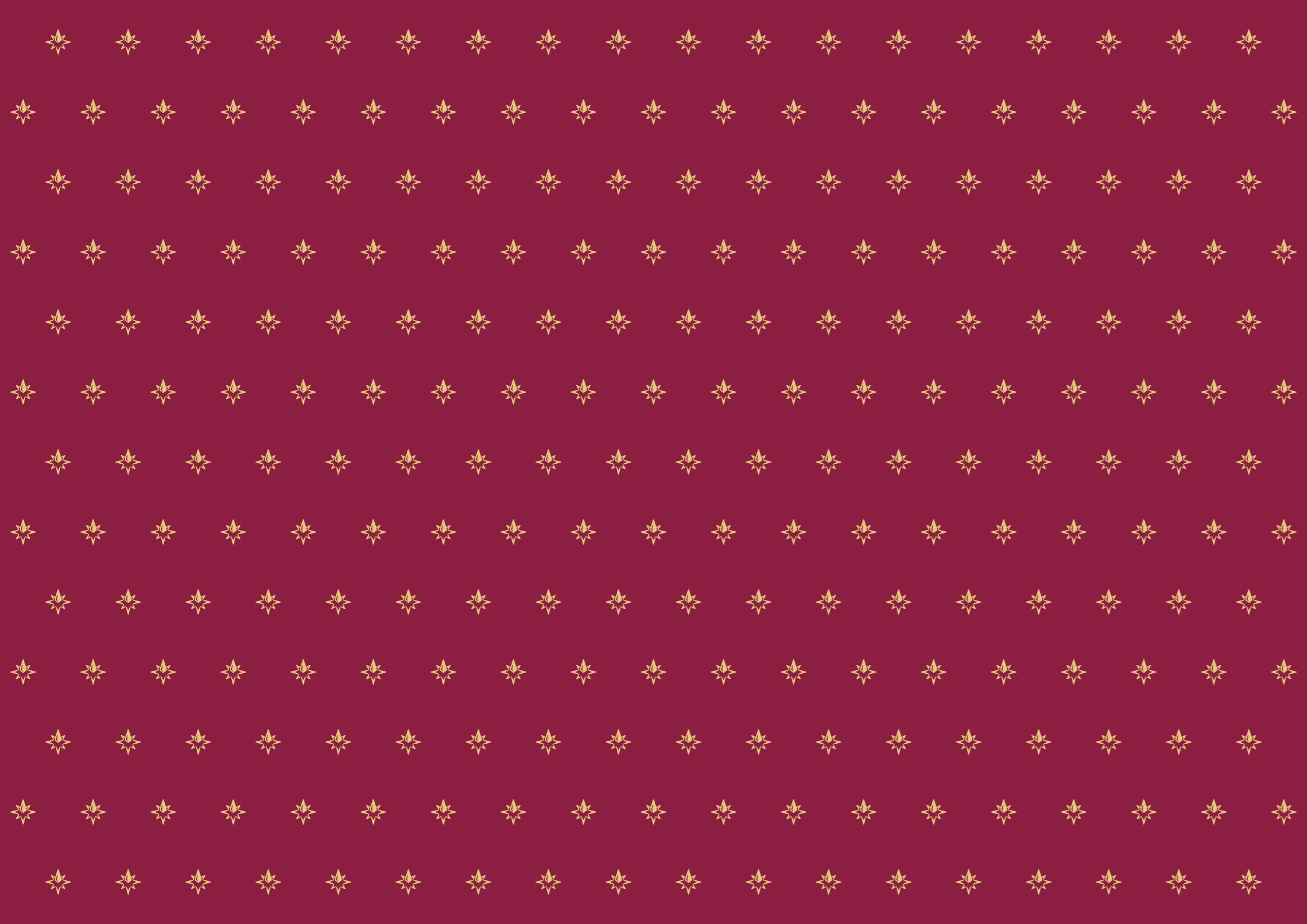
Code: ACS017 Size: 15 x 31 cm Pcs. per box: 15



**EMPTY WOODEN COUNTER DISPLAY**

Code: ACS019 Size: 39 x 23 x 40(h) cm Pcs. per box: 1





## **2024 COLLECTION**

Domori presents:

*Gelato Libre*  
per aquam



## GELATO LIBRE: THE FLAVOURS



### CRIOLLO CHOCOLATE

A blend of three varieties (Porcelana, Chuao, and Canoabo) from Domori's Venezuelan plantations.

The unmistakable aroma of hazelnuts, cream, and honey.

Code: GEL001

Volume: 1 l

Pcs. per box: 12



### CREMA LIBRE

Vegan reinterpretation of the traditional recipe. Roasted cashews with saffron recreate the flavour of egg yolk and milk.

Code: GEL006

Volume: 1 l

Pcs. per box: 12



### HAZELNUT

One of the iconic flavours of Italian gelato in the Gelato Libre version. PGI Piedmont hazelnuts with PDO Roman hazelnuts and a hint of vanilla.

Code: GEL007

Volume: 1 l

Pcs. per box: 12



### PISTACHIO

Gianluca Franzoni has selected a variety of Iranian pistachios, which give the product a perfect balance of vegetal and gourmand notes.

Code: GEL009

Volume: 1 l

Pcs. per box: 12

## GELATO LIBRE: PREPARATION



1. Pour the ice cream mixture into the ice cream maker.



THE MAGIMIX EXPERT GELATO MACHINE IS AVAILABLE ON A SECURED LOAN BASIS.



2. Start the production process by setting (depending on the model of ice cream maker you are using) the processing time until the desired consistency is obtained.

THE MIXTURE CAN BE USED WITH A PROFESSIONAL SLUSH MAKER TO OBTAIN A CHOCOLATE FROZEN DESSERT.

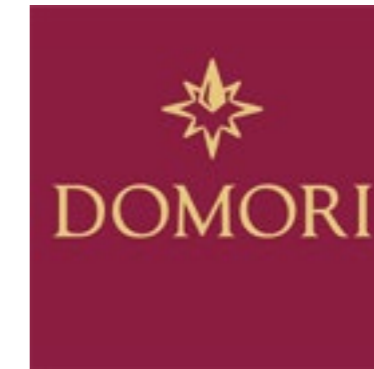


3. Ready to serve.



4. Serving temperature: between -8° and -14° C





## 2024 COLLECTION

Domori presents:



PINTAUDI®



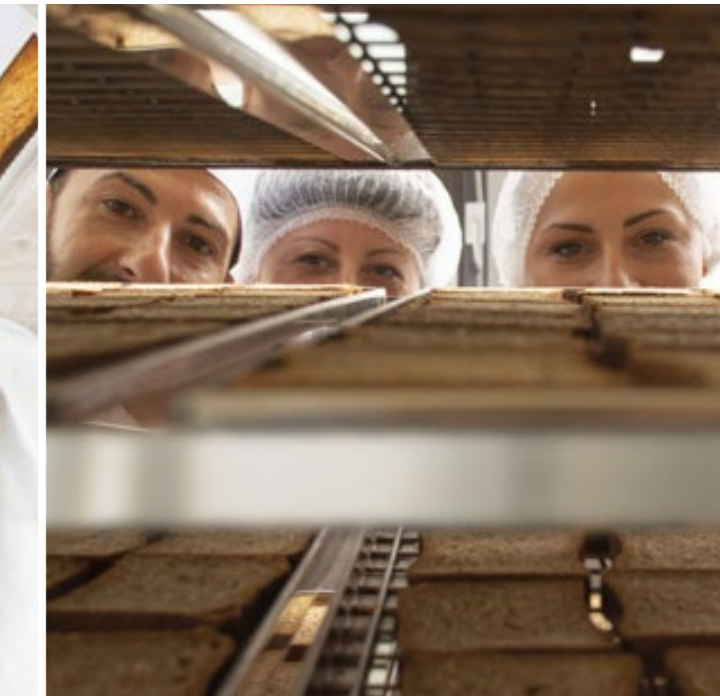


Giuseppe Pintaudi - Founder and pastry chef

## THE BISCUIT FACTORY

At its most basic level, a confectionery workshop is a Factory. A place of continuous transformation, made up of people, where every processing phase is carried out at a pace that ensures maximum quality and control, including the selection of ingredients, the preparation of the dough, the baking, and the packaging.

Quality ingredients are essential for an excellent product: butter from Normandy, organic single-variety spelt flour with low gluten contents but with high levels of protein and fibre, sugar, and free-range eggs. These are the ingredients at the base of every Pintaudi product.







## QUALITY INGREDIENTS

Pintaudi products are made from select quality ingredients: Normandy butter, free-range eggs, organic Italian single-variety spelt flour. Pintaudi whole wheat rusks are the top product of this Trieste baking company. They were born of a “wager” by Giuseppe Pintaudi: that of restoring full dignity to a very popular and beloved product, but very far, in its industrial standards, from its original quality.



The research, the quality and the taste of this extraordinary product were acknowledged at the Great Taste Awards 2020.





# RUSKS



## CLASSIC RECIPE

classic rusks, a timeless tradition that brings back the sweet taste of wheat.

- Twice toasted.
- Long rising time.
- Eggs from free-range hens.
- Type "1" Italian soft wheat flour.
- Type "0" Italian soft wheat flour.

Code: PIFB1313  
Weight: 200 g  
Pcs. per box: 15



## STONE-GROUND WHOLE WHEAT

### NEW WRAPPER

Wholewheat rusks, a rich and decisive taste in the most sincere simplicity.

- Twice toasted.
- Long rising time.
- Eggs from free-range hens.
- Stone-processed wholemeal wheat flour.
- Sicilian orange blossom honey.

Code: PIFB1314  
Weight: 200 g  
Pcs. per box: 15



## LINSEED, OAT, AND SUNFLOWER SEEDS

Pintaudi's new rusks are perfect for a healthy and tasty breakfast rich in fibre and protein.

- Twice toasted.
- Long rising time.
- With flavourful roasted seeds.
- Produced from a blend of wheat, rye, and oat grains, with wheat germ, from a certified supply chain.

Code: PIFB1317  
Weight: 200 g  
Pcs. per box: 15



## BLUEBERRIES AND RASPBERRIES

The new more flavourful Pintaudi rusk with Raspberry and Blueberry pulp.

- Twice toasted.
- Long rising time.
- Egg-free, made with real fresh fruit.
- Made with type "1" Italian wheat with wheat germ from a certified supply chain.

Code: PIFB1316  
Weight: 200 g  
Pcs. per box: 15



# BISCOTTONI



## BUTTER AND MADAGASCAR VANILLA

**NEW WRAPPER**

Normandy butter and natural vanilla for the most classic of dunking biscuits.

- Organic Italian spelt.
- Normandy butter.
- Eggs from free-range hens.
- Madagascar vanilla beans.

Code: PIBI139  
Weight: 240 g (min)  
Pcs. per box: 12



## WHOLE WHEAT AND RAW CANE SUGAR

**NEW WRAPPER**

All the good things wheat has to offer, in a simple, outspoken and fragrant biscuit.

- Organic Italian spelt.
- Normandy butter.
- Eggs from free-range hens.
- Italian whole wheat flour.
- Sicilian orange blossom honey.

Code: PIBI1311  
Weight: 240 g (min)  
Pcs. per box: 12



## HAZELNUTS AND FINE COCOA

Cocoa and hazelnuts for a biscuit that reinterprets the Italian tradition of gianduja.

- Organic Italian spelt.
- Normandy butter.
- Eggs from free-range hens.
- PGI Piedmont hazelnuts.
- Domori cocoa powder.

Code: PIBI1310  
Weight: 240 g (min)  
Pcs. per box: 12



## ITALIAN SPELT AND SICILIAN WILDFLOWER HONEY

Perfect blend of the nutritious properties of spelt and the natural sweetness of Sicilian honey.

- Organic Italian spelt.
- Normandy butter.
- Eggs from free-range hens.
- Organic Italian spelt.
- Sicilian orange blossom honey.

Code: PIBI1312  
Weight: 240 g (min)  
Pcs. per box: 12



# SHORTBREAD PASTRIES



## GRAND CRU CHOCOLATE AND FLEUR DE SEL

Chocolate shortbread, sweet and a little savoury. A perfect combination, for an intense and unforgettable taste.

- Organic Italian spelt.
- Normandy butter.
- Eggs from free-range hens.
- Domori chocolate.

Code: PIFR131  
Weight: 160 g  
Pcs. per box: 9



## CLASSIC RECIPE WITH BUTTER

The classic shortbread biscuits. Where the sweetness of Normandy butter is joined by crumbliness and by traditional fragrance.

- Organic Italian spelt.
- Normandy butter.
- Eggs from free-range hens.

Code: PIFR132  
Weight: 160 g  
Pcs. per box: 9



## VAL DI NOTO ALMONDS AND SICILIAN LEMONS

Shortbread biscuits with a fresh, Mediterranean taste.

A symphony of almonds and lemons, for a perfect Sicilian pairing.

- Organic Italian spelt.
- Normandy butter.
- Eggs from free-range hens.
- Sicilian almonds.

Code: PIFR133  
Weight: 160 g  
Pcs. per box: 9



## SICILIAN NAVEL ORANGE

Fruity shortbread biscuits with an irresistible contrast. Sicilian oranges meet cocoa for a combination that will envelop your taste buds.

- Organic Italian spelt.
- Normandy butter.
- Eggs from free-range hens.
- Domori cocoa powder.

Code: PIFR134  
Weight: 160 g  
Pcs. per box: 9



## GRAINS AND SICILIAN ORANGE BLOSSOM HONEY

Rustic, genuine shortbread biscuits. A full, flowery taste for a biscuit rich with nutritious properties.

- Organic Italian spelt.
- Normandy butter.
- Eggs from free-range hens.
- Blend of cereals.

Code: PIFR135  
Weight: 160 g  
Pcs. per box: 9



# TIN GIFT BOXES



## ASSORTED SHORTBREAD PASTRIES IN A TIN BOX

**NEW PRODUCT**

An elegant tin box containing:

- 10 grand cru chocolate and fleur de sel shortbread pastries.
- 10 traditional shortbread pastries with butter.
- 10 val di Noto almond and Sicilian lemon shortbread pastries.
- 10 Sicilian naval orange shortbread pastries.

Code: PILF152

Weight: 280 g

Pcs. per box: 4

Size: 14 x 24.5 x 7 cm



## ASSORTED BISCOTTONI IN A CHRISTMAS TIN BOX

**NEW PRODUCT**

An elegant tin box containing:

- 3 biscottoni with butter and Madagascar vanilla.
- 3 biscottoni with Piedmont hazelnuts and fine cocoa.
- 3 biscottoni made with wholewheat with raw cane sugar.
- 3 biscottoni made with organic spelt and orange wildflower honey.

Code: PILB151

Weight: 240 g

Pcs. per box: 4

Size: 14 x 24.5 x 7 cm



# CHRISTMAS



## CLASSIC PANETTONE IN A TIN GIFT BOX

NEW PRODUCT

A reusable collector's tin containing a classic panettone candied orange and sultanas.

Code: PILP154 Pcs. per box: 4  
Weight: 750 g Size: Ø19 x 20 cm  
Expiry: 2 months



## PANETTONE WITH CANDIED ORANGE AND SULTANAS

NEW PRODUCT

Classic Panettone: candied orange and sultanas.

- Produced with live freshened mother yeast.
- 36 hours rising time.
- No added flavours, colours, or preservatives.

Code: PIPC155  
Weight: 1 kg Pcs. per box: 6  
Expiry: 2 months Size: 19 x 19 x 20.5 (h) cm



## PANETTONE WITH PGI GRANNY SMITH APPLES

NEW PRODUCT

Panettone with PGI Alto Adige Granny Smith apples.

- Produced with live freshened mother yeast.
- 36 hours rising time.
- No added flavours, colours, or preservatives.

Code: PIPM156  
Weight: 1 kg Pcs. per box: 6  
Expiry: 2 months Size: 19 x 19 x 20.5 (h) cm



## CHRISTMAS ORNAMENT BALL

NEW PRODUCT

A Christmas ornament ball in tin containing assorted shortbread pastries packed in single portions.

Code: PIPN153 Pcs. per box: 12  
Size: Ø10 cm



# SINGLE PORTIONS



## SINGLE-PORTION SHORTBREAD PASTRIES

Pintaudi shortbread in a smaller format.  
Perfect with coffee.

**Grand Cru Chocolate and fleur de sel:** PIFR131S

**Traditional recipe with butter:** PIFR132S

**Almond and lemon:** PIFR133S

**Orange and cocoa:** PIFR134S

Weight: 4 kg per Box (approx. 1000 shortbread pastries)



## CLASSIC RECIPE RUSK

classic rusks, a timeless tradition that brings back the sweet taste of wheat.

- Pintaudi rusks in single portion format. Perfect for breakfast.
- Paper flowpack.

Code: PIFB1313S

Pcs. per box: 120 pcs. per box

Single slice weight: 14 g



## BISCOTTONE WITH BUTTER AND MADAGASCAR VANILLA

Normandy butter and natural vanilla for the most classic of dunking biscuits.

- Pintaudi biscottoni in single-serving format are perfect for taking with you, to be enjoyed at any time of the day.
- Cardboard display.

Code: PIBI139S

Pcs. per box: 2 displays for 30 pcs

Single biscuit weight: 19 g



## WHOLE WHEAT RUSK

Whole-wheat rusks, a rich and decisive taste in the most sincere simplicity.

- Pintaudi rusks in single portion format. Perfect for breakfast.
- Paper flowpack.

Code: PIFB1314S

Pcs. per box: 120 pcs. per box

Single slice weight: 14 g

# THE PINTAUDI CORNER

The display's shape is designed improve the products' visibility, thanks to its large display surfaces and well-spaced shelves. The wooden display has a simple and elegant design that goes well with any style of décor without looking out of place.

- DELIVERED EMPTY
- Solid and durable construction, easy to assemble.
- Instructions contained inside the package.

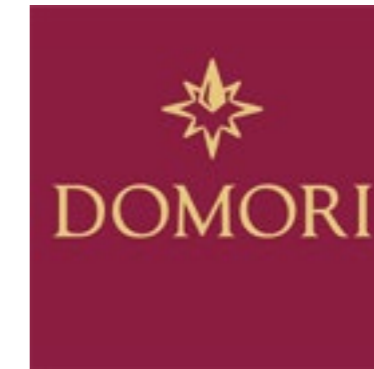
Code: IMPBPIØØ1

Size: 53 x 32 x 179 cm

Distance between shelves: 35 cm







## **2024 COLLECTION**

Domori presents:

**ACHILLEA**  
B I O





## ORGANIC, TASTY, AND SUSTAINABLE

In 1980, there weren't many of us coming up with products that only contained the very best that nature had to offer.

We were visionary and innovative, even when we decided to establish our facilities amid the breathtaking Cuneo Alps: seeing Monte Viso every day from our windows helps us to stay in tune with nature.

We refuse to compromise.

Achillea juices only contain 100% organic fruit. No additives. No gluten. Only the sugars present in the fruit

itself. We choose the best certified organic ingredients, and harvest them when fully ripe, without rushing, so as to keep their flavour, vitamins and nutrients unaltered. We process them with skilful craftsmanship.

We have always strived to continuously reduce our environmental impact, starting with our packaging.

In fact, we use glass, paper and aluminium: 100% and infinitely recyclable materials, which are capable of best preserving and exalting the properties of our products.





## THE 200ml SUCCOBENE FRUIT JUICES



### PEACH

The ideal choice for those looking for a delicate and refreshing drink.

- Drinks made from the best organic fruits.
- Only contains the sugars present in the fruit itself.
- No artificial colours or preservatives.
- Thick and pulpy.

Code: AC150727  
Litres: 200 ml  
Pcs. per box: 6



### PEAR

The ideal choice for those looking for a sweet and delicate drink.

- Drinks made from the best organic fruits.
- Only contains the sugars present in the fruit itself.
- No artificial colours or preservatives.
- Thick and pulpy.

Code: AC150725  
Litres: 200 ml  
Pcs. per box: 6



### PINEAPPLE

Achillea pineapple juice is a true burst of tropical flavour. The ideal choice for those looking for an exotic and healthy drink.

- Drinks made from the best organic fruits.
- Only contains the sugars present in the fruit itself.
- No artificial colours or preservatives.
- Thick and pulpy.

Code: AC150722  
Litres: 200 ml  
Pcs. per box: 6



# THE 200ml SUCCOBENE FRUIT JUICES



## APRICOT

Achillea apricot juice is made from superior quality apricots, carefully cultivated to ensure a sweet and bold flavour.

- Drinks made from the best organic fruits.
- Only contains the sugars present in the fruit itself.
- No artificial colours or preservatives.
- Thick and pulpy.

Code: AC15Ø72Ø  
Litres: 200 ml  
Pcs. per box: 6



## ACE PLUS APPLE

Achillea apple juice is made from carefully cultivated and selected apples to ensure a fresh and genuine flavour.

- Drinks made from the best organic fruits.
- Only contains the sugars present in the fruit itself.
- No artificial colours or preservatives.

Code: AC15Ø719  
Litres: 200 ml  
Pcs. per box: 6



## FILTERED APPLE

Achillea filtered apple juice is made from superior quality apples, carefully cultivated to ensure a fresh and delicate flavour.

- 100% Filtered Apple Juice.
- Drinks made from the best organic fruits.
- Only contains the sugars present in the fruit itself.
- No artificial colours or preservatives.

Code: AC15Ø717  
Litres: 200 ml  
Pcs. per box: 6



## BLUEBERRY

Achillea Blueberry Juice is made from superior quality blueberries, to ensure a tasty and healthy drink.

- Drinks made from the best organic fruits.
- Only contains the sugars present in the fruit itself.
- No artificial colours or preservatives.
- Thick and pulpy.

Code: AC15Ø724  
Litres: 200 ml  
Pcs. per box: 6



## TOMATO

Achillea tomato juice is rich in vitamins and minerals, making it perfect for those in search of a healthy, thirst-quenching drink.

- 100% Tomato.
- Only contains the sugars present in the fruit itself.
- No artificial colours or preservatives.
- Thick and pulpy.

Code: AC15Ø716  
Litres: 200 ml  
Pcs. per box: 6



## GRAPEFRUIT

Achillea Succobene grapefruit juice is an ideal choice for those looking for a refreshing, thirst-quenching drink.

- Drinks made from the best organic fruits.
- Only contains the sugars present in the fruit itself.
- No artificial colours or preservatives.
- Pulpy.

Code: AC15Ø729  
Litres: 200 ml  
Pcs. per box: 6



## POMEGRANATE

Achillea pomegranate juice is a real source of energy and vitality.

- Drinks made from the best organic fruits.
- Only contains the sugars present in the fruit itself.
- No artificial colours or preservatives.

Code: AC15Ø846  
Litres: 200 ml  
Pcs. per box: 6



## ORANGE

Achillea Succobene orange juice is ideal for anyone looking for a fresh, thirst-quenching drink.

- Drinks made from the best organic fruits.
- Only contains the sugars present in the fruit itself.
- No artificial colours or preservatives.
- Thick and pulpy.

Code: AC15Ø899  
Litres: 200 ml  
Pcs. per box: 6



## THE 330ml SUCCOBENE FRUIT JUICES



### POMEGRANATE

Fruit juice concentrate made from pomegranate.

- Drinks made from the best organic fruits.
- Only contains the sugars present in the fruit itself.
- No artificial colours or preservatives.

Code: AC7010

Litres: 330 ml

Pcs. per box: 12



### LEMON

Fruit juice concentrate made from Sicilian lemons.

- Drinks made from the best organic fruits.
- Only contains the sugars present in the fruit itself.
- No artificial colours or preservatives.

Code: AC1473

Litres: 330 ml

Pcs. per box: 12



### BLUEBERRY

Fruit juice concentrate made from wild blueberries.

- Drinks made from the best organic fruits.
- Only contains the sugars present in the fruit itself.
- No artificial colours or preservatives.

Code: AC5955

Litres: 330 ml

Pcs. per box: 12



# THE 750ml SUCCOBENE FRUIT JUICES



## PEACH

The ideal choice for those looking for a delicate and refreshing drink.

- Drinks made from the best organic fruits.
- Only contains the sugars present in the fruit itself.
- No artificial colours or preservatives.
- Thick and pulpy.

Code: AC15Ø939  
Litres: 750 ml  
Pcs. per box: 6



## PEAR

The ideal choice for those looking for a sweet and delicate drink.

- Drinks made from the best organic fruits.
- Only contains the sugars present in the fruit itself.
- No artificial colours or preservatives.
- Thick and pulpy.

Code: AC15Ø938  
Litres: 750 ml  
Pcs. per box: 6



## APRICOT

Achillea apricot juice is made from superior quality apricots, carefully cultivated to ensure a sweet and bold flavour.

- Drinks made from the best organic fruits.
- Only contains the sugars present in the fruit itself.
- No artificial colours or preservatives.
- Thick and pulpy.

Code: AC15Ø936  
Litres: 750 ml  
Pcs. per box: 6



## ACE PLUS APPLE

Achillea apple juice is made from carefully cultivated and selected apples to ensure a fresh and genuine flavour.

- Drinks made from the best organic fruits.
- Only contains the sugars present in the fruit itself.
- No artificial colours or preservatives.

Code: AC15Ø796  
Litres: 750 ml  
Pcs. per box: 6



## FILTERED APPLE

Achillea filtered apple juice is made from superior quality apples, carefully cultivated to ensure a fresh and delicate flavour.

- 100% Filtered Apple Juice.
- Drinks made from the best organic fruits.
- Only contains the sugars present in the fruit itself.
- No artificial colours or preservatives.

Code: AC15Ø934  
Litres: 750 ml  
Pcs. per box: 6



## BLUEBERRY

Achillea Blueberry Juice is made from superior quality blueberries, to ensure a tasty and healthy drink.

- Drinks made from the best organic fruits.
- Only contains the sugars present in the fruit itself.
- No artificial colours or preservatives.
- Thick and pulpy.

Code: AC15Ø937  
Litres: 750 ml  
Pcs. per box: 6



## GRAPEFRUIT

Achillea Succobene grapefruit juice is an ideal choice for those looking for a refreshing, thirst-quenching drink.

- Drinks made from the best organic fruits.
- Only contains the sugars present in the fruit itself.
- No artificial colours or preservatives.
- Pulpy.

Code: AC15Ø94Ø  
Litres: 750 ml  
Pcs. per box: 6



## ORANGE

Achillea Succobene orange juice is ideal for anyone looking for a fresh, thirst-quenching drink.

- Drinks made from the best organic fruits.
- Only contains the sugars present in the fruit itself.
- No artificial colours or preservatives.
- Thick and pulpy.

Code: AC15Ø898  
Litres: 750 ml  
Pcs. per box: 6



## SMOOTHIES



### PEAR, APPLE, AND BANANA

Preparation made from fruit purées and concentrated fruit juices.

- No artificial colours or preservatives.
- From organic farming.

Code: AC15Ø714  
Litres: 200 ml  
Pcs. per box: 6



### MANGO, PEACH, AND ORANGE

Preparation made from fruit purées and concentrated fruit juices.

- No artificial colours or preservatives.
- From organic farming.

Code: AC15Ø715  
Litres: 200 ml  
Pcs. per box: 6



### STRAWBERRY, BLUEBERRY, AND POMEGRANATE

Preparation made from fruit purées and concentrated fruit juices.

- No artificial colours or preservatives.
- From organic farming.

Code: AC15Ø713  
Litres: 200 ml  
Pcs. per box: 6

## SOFT DRINKS



### LEMONADE

A drink with a fresh and lively taste. The pleasure of taking a break and quenching your thirst with a tasty natural beverage.

- No artificial colours or preservatives.
- No added carbon dioxide.
- Gluten free.

Code: AC16ØØ96  
Litres: 275 ml  
Pcs. per box: 6



### ORANGEADE

A refreshing drink with the bold flavour of organic Sicilian oranges and ginger.

- No artificial colours or preservatives.
- No added carbon dioxide.
- Gluten free.

Code: AC16Ø377  
Litres: 275 ml  
Pcs. per box: 12



### APPLE AND GINGER

A perfect balance of sweet apple and spicy ginger.

- No artificial colours or preservatives.
- No added carbon dioxide.

Code: AC16Ø1Ø3  
Litres: 275 ml  
Pcs. per box: 12



# PURE FRUIT PURÉE



## STRAWBERRY

NEW PRODUCT

Concentrated strawberry purée from organic farming, made from 100% fruit and vacuum-cooked at 50-60 °C.

- 100% Fruit.

Code: AC1326

Weight: 300 g

Pcs. per box: 6



## PEACH

NEW PRODUCT

Concentrated peach purée from organic farming, made from 100% fruit and vacuum-cooked at 50-60 °C.

- 100% Fruit.

Code: AC1337

Weight: 300 g

Pcs. per box: 6



## BLUEBERRY

NEW PRODUCT

Wild blueberry purée from organic farming, made from 100% fruit and vacuum-cooked at 50-60 °C.

- 100% Fruit.

Code: AC5751

Weight: 300 g

Pcs. per box: 6



## APRICOT

NEW PRODUCT

Concentrated apricot purée from organic farming, made from 100% fruit and vacuum-cooked at 50-60 °C.

- 100% Fruit.

Code: AC5753

Weight: 300 g

Pcs. per box: 6



## APPLE

NEW PRODUCT

Concentrated apple purée from organic farming, made from 100% fruit and vacuum-cooked at 50-60 °C.

- 100% Fruit.

Code: AC5755

Weight: 300 g

Pcs. per box: 6



## PLUM

NEW PRODUCT

Concentrated plum purée from organic farming, made from 100% fruit and vacuum-cooked at 50-60 °C.

- 100% Fruit.

Code: AC5757

Weight: 300 g

Pcs. per box: 6



## PEAR

NEW PRODUCT

Concentrated pear purée from organic farming, made from 100% fruit and vacuum-cooked at 50-60 °C.

- 100% Fruit.

Code: AC6275

Weight: 300 g

Pcs. per box: 6



## THE TEAS



### PEACH

An infusion with a strong sweet and fruity flavour, made from premium Darjeeling tea leaves.

- No artificial colours or preservatives.
- First you taste the actual flavour of the tea, followed by the peach.
- Gluten free.

Code: AC160098  
Litres: 275 ml  
Pcs. per box: 12



### LEMON

A thirst-quenching and refreshing lemon infusion made from premium Darjeeling tea leaves.

- No artificial colours or preservatives.
- First you taste the actual flavour of the tea, followed by the lemon.
- Gluten free.

Code: AC160660  
Litres: 275 ml  
Pcs. per box: 12



### GREEN

A thirst-quenching and refreshing green tea leaf infusion made from premium Darjeeling tea leaves.

- No artificial colours or preservatives.
- No added carbon dioxide.
- Gluten free.

Code: AC160101  
Litres: 275 ml  
Pcs. per box: 12







## MAZZALÙA: UNA GIOIA SENZ'ALCOL

Mazzalùa is “Alcohol-Free Sparkling,” as the correct global designation reads, while “Bevanda Analcolica Frizzante” is the authentic Italian translation. Tasting the ancient, aromatic vinegar in the charming, dedicated cellars, perceiving their extraordinary nature, recording their uniqueness and unspeakable excellence, convinced the four founding partners that such a natural treasure should not remain known to a few but, on the contrary, should become a universal heritage, inducing them to pursue the creation of a universal beverage that transcends tradition, culture, faith, age, and is therefore inevitably alcohol-free. In terms of taste-olfactory, Mazzalùa expresses itself with a gently acidic gustative note, a touch of fruitiness caressed by a naturally soft complement, perceptible

in the sweetness of the grape must. The four founders have dedicated perseverance, resources, and research to eliminate the vinegar’s characteristic instability and make the best use of the most in the Mazzalùa blend. Complementing the drink is a bright touch of carbon dioxide (CO2), useful both as a natural preservative and an element of joy, thanks to the vibrant, mischievous sparkle that emerges, brightening spirits and sometimes bearing witness to life’s essential moments. Research and commitment have created an apparently simple yet intimately complex product. There are no other additions; the bouquet in Mazzalùa is entirely natural and comes from a skillful blending of naturally aged wine vinegar and grape must. No conservatives, purest naturalness.



# MAZZALÙA



## MAZZALÙA

### NOVITÀ

- Ingredients: Must form white grapes, white vinegar, carbon dioxide (CO2), and salt;
- Acidity correctors: citric acid, antioxidant, tartaric acid;
- Conservatives: Sulphur dioxide;
- Color: clear amber yellow;
- Taste: Sparkling products, sweet and reminiscent of grape must;
- Consistency: liquid;
- Ideal pairings: oysters, sliced meats, fresh and aged cheeses, salads, focaccias, and desserts.

Code: MAZZALUA075

Pz x Cartone: 6  
Litri: 0,75

