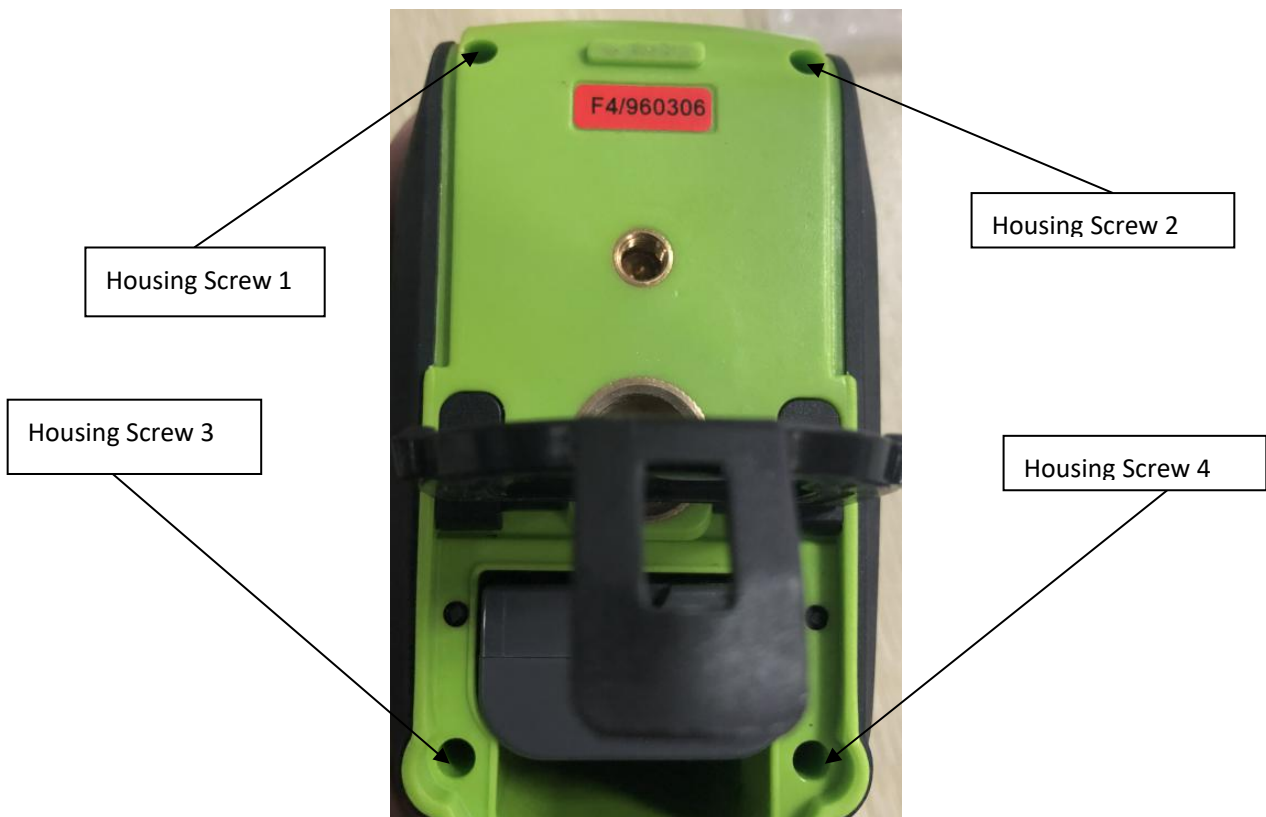


Tool need: Standard **Cross** Screw Driver. If possible, better be Auto-Screw Driver



Caution: Mind the Laser core, not to touch any internal diode components.

Step 1 Take out upper housing by loosening 4 screws



Step 2 Take out broken vertical topping or window by separating upper and lower housing. Please Notice there are two vertical windows for 603 laser level.

Vertical window A



Upper housing

Lower housing

Vertical window B



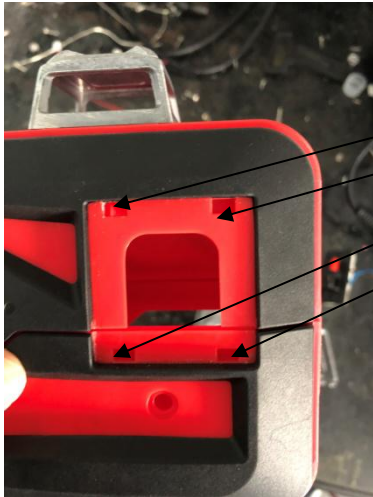
Upper housing

Lower housing

Step 3 Place replacement of topping to four fixing corners. Combing lower and upper housing.



Four bars of metal topping need to insert into four fixing corners properly.



four fixing corners



Step 4 Make sure vertical topping has been tighten up properly



Step 5 Reverse step1 and tighten up four housing screws.

