

Installation Guide Recessed Grid-Ceiling (For Back-Lit Panel Series)



BEFORE YOU BEGIN

Read these instructions completely and carefully

⚠ WARNING/AVERTISSEMENT

RISK OF ELECTRIC SHOCK

- turn power off before inspection, installation or removal.
- properly ground electrical enclosure.

RISK OF FIRE

- follow all NEC and local codes.
- use only UL approved wire for input connections.
Input wire minimum size is 18 AWG, and the output wire
Minimum size is 24 AWG.

RISQUE DE DECHARGES ELECTRIQUE

- Coupez l'alimentation avant d'inspecter, installer au déplacer le luminaire.
- Assurez-vous de correctement mettre a la terre le boîtier d'alimentation électrique.

RISQUE D'INCENDIE

- respectez tous les codes NEC et codes locaux.
- N'utilisez que des fils approuvés par UL a IEC pour les entrées/sorties de connexion taille minimum 18 AWG

Prepare Electrical Wiring

- Refer to Panel Light Series LED Panel Specification for to the lamp electrical data info.

Save These Instructions

- Use only in the manner intended by manufacturer.
If you have any questions, contact the manufacturer.



Electrical Requirements

The LED luminaire must be connected to the mains supply according to its ratings on the product label.



Grounding Instructions

The grounding and bonding of the overall system shall be done in accordance to local electric code of the country where the luminaire is installed.

⚠ CAUTION

Do Not perforate the integrity of the luminaire, only screw into the threaded mounting bracket holes located at the four corners of the fixture.

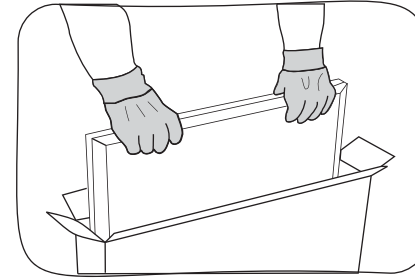
Storage Info

Environmental Operating Temperature Range
Environmental Rating

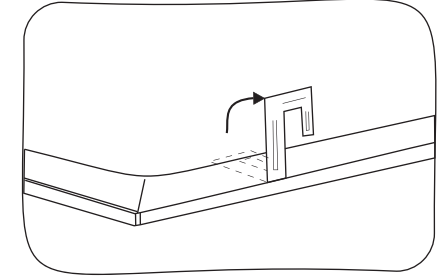
Max. 40°C
Dry or Damp location only



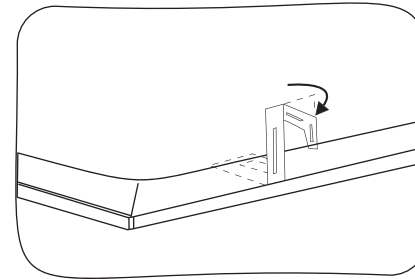
RECESSED IN Grid-CEILING FRAME



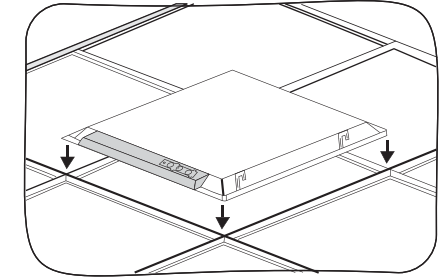
1. Take the panel out of the driver box and protective bag. Remove the protective film.



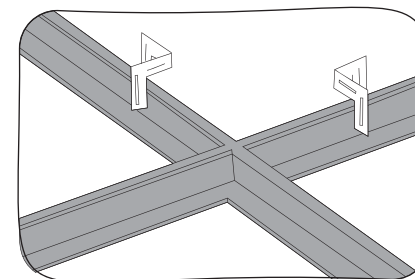
2. Lift the mounting clip on the edge of panel.



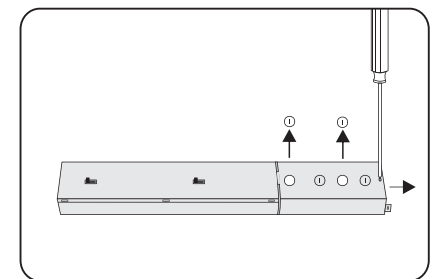
3. Turn the mounting clip head.



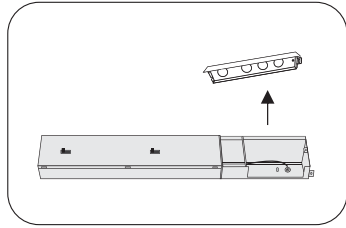
4. Put the panel into grid ceiling.



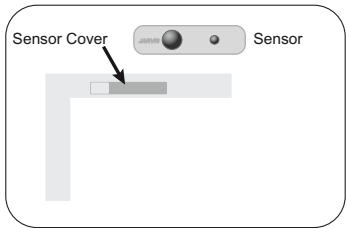
5. Check the clips well fasten to grid rails (Main/Cross Ceiling tee)



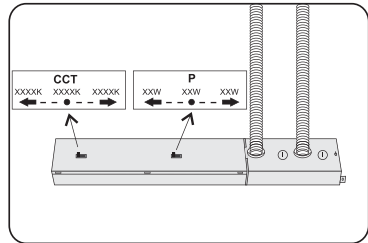
6. Remove the driver box cover.



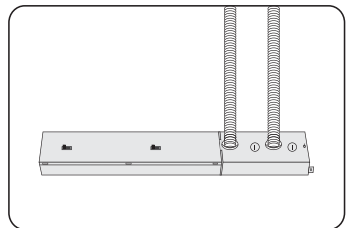
7. Open the knockout hole.



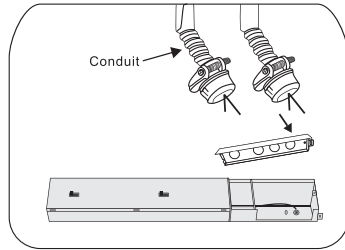
9. Remove the white cover by pulling it out and then install the sensor by gently pushing until it clicks into place.



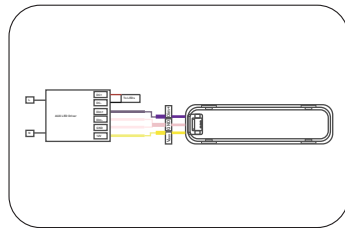
11. Adjust the toggle switch according to the desired wattage and color temperature.



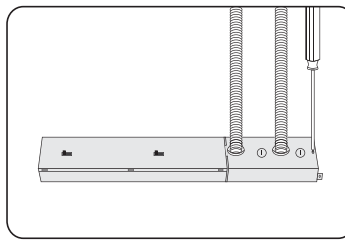
13. Complete.



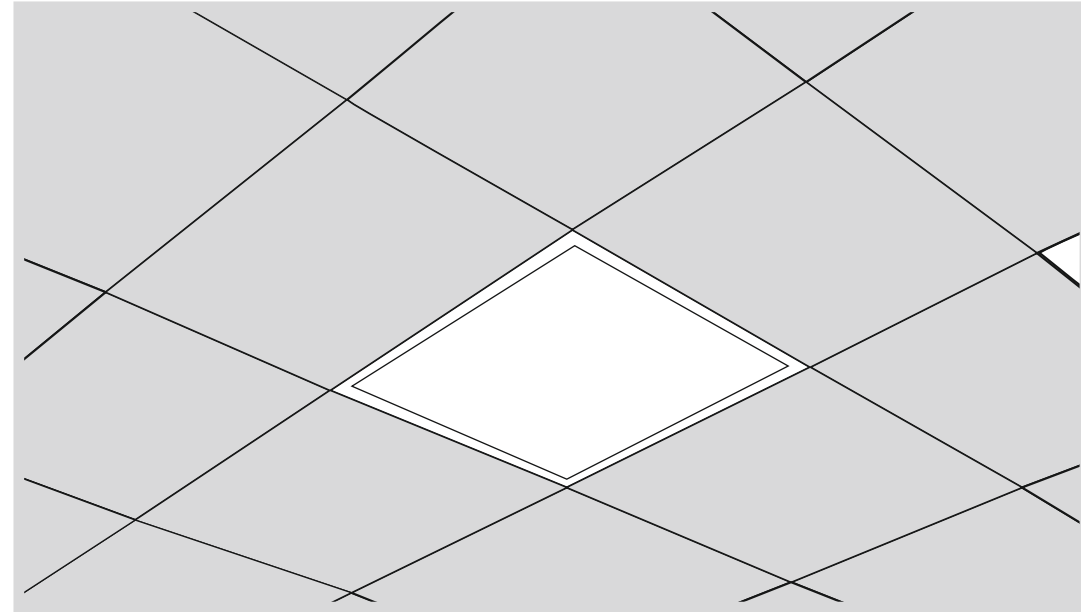
8. Insert the cable into driver box.



10. Now connect the cable of LED Driver and the sensor as per the above image,



12. Secure the cover on the driver box.



Back-Lit Panel Installation Guide Recessed Grid-Ceiling (For Back-Lit Panel Series)