



PORTABLE GRAB BAR

4" TILE GRIP

SINGLE GRIP

TELESCOPING GRIP

TELESCOPING PIVOT GRIP

**BRIDGE-MEDICAL**™

www.bridge-medical.com

STOP! READ BELOW BEFORE USE!

All users should read the owner's manual before use for specific instructions and liability warning!

This product is for use on flat and smooth non-porous surfaces. It is not for use on drywall or any other porous surface. Before attaching to approved surface, the user should verify that the surface itself is in good condition (e.g. tile is secured properly to wall). If the surface is worn, loose or in disrepair, the device should not be used on surface under any circumstances.

This device is intended to assist your body's natural motion, (e.g. steadying yourself in the bath or as a balance assist during transitions from standing to sitting or vice-versa). You should not place your total body weight on the device but rather use it as a supplement to your natural motion. It is intended to be used for short periods only.

Prior to any use, the user or a competent assistant should check vacuum seal on both ends to ensure device is safely attached. If loose, remove entire device and reattach per the owner's manual.

Insofar as is legally admissible, any and all liability on Bridge Medical's part is excluded if the user has not followed all safety and use rules. Since safety rules cannot take into account all circumstances in all applications, it is the user's responsibility to check before that their particular use is appropriate and safe for their situation. We do not guarantee any use or features that are not included in our owner's manual and enclosure.

Bridge Medical is dedicated to creating products that make our customers lives more independent, safe and accessible. We strive everyday to ensure your experience with our Portable Grab Bar is trouble free and safe and we hope you enjoy the use of our product.

SAFETY TIPS & WARNINGS

- > Before attaching, the user should verify that the surface is in good condition (i.e. tile secured properly to wall). If surface is worn, loose or in disrepair, the grab bar should not be used on surface under any circumstances.
- > Inspect rubber pads to make sure they are smooth and free from defects before each use. If wear is noticeable discontinue use immediately.
- > On telescoping models, make sure handle is fully seated into suction ends. If metal lock button is missing or does not extend through mounting hole, discontinue use. See assembly instructions for more information.
- > Grab Bar should only be attached to smooth and non-porous surfaces which are clean and air-tight.
- > Not all tiles are smooth and air-tight, always verify before use.
- > On porous or textured surfaces, underwater and in extreme heat or cold conditions, the vacuum hold will diminish or may not exist at all.
- > Grab Bar should never be used on sheet rock, drywall or wallpaper.
- > Always verify firm attachment to surface before each use.
- > You should not place your total body weight on the Grab Bar but rather use it as a supplement to your natural motion.
- > The Grab Bar is intended to be used for short periods only.
- > Always be aware of your surroundings and be in control of your environment- the Grab Bar should not be your only option for stability or control.
- > Grab Bar could release abruptly without warning. Do not place any objects below the Grab Bar that could be damaged should the Grab Bar suddenly release.

CARE & INSPECTION

- > Remove, inspect and clean each surface as necessary before each use with non-abrasive soap and water.
- > Remount according to installation instructions.
- > Avoid exposing rubber pads to direct sunlight or extreme cold as they could lose suction and elasticity.
- > For best results, remove after each use and store in a cool, dark place with levers disengaged.

LIABILITY WARNING

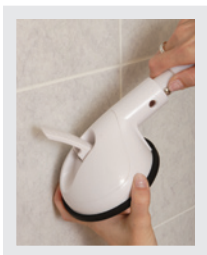
Activity involving motion or height creates the possibility of accidental injury or death. Before using, know your own limitations and the limitations of the equipment. You, the user, assumes all risk. All merchandise is sold under this condition.

How to install your Portable Grab Bar

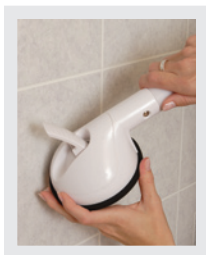
ASSEMBLE PRODUCT
(For products with removable handles)



Line up metal pin with receiving end

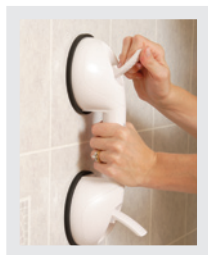
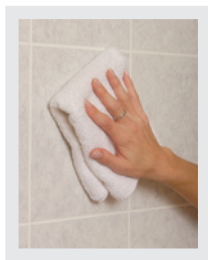


Lightly press in metal pin and insert into receiving end



Make sure pin snaps through the pin hole receiving end

- 1 Inspect mounting surface thoroughly before attaching. Clean and dry the mounting surface and rubber pads.



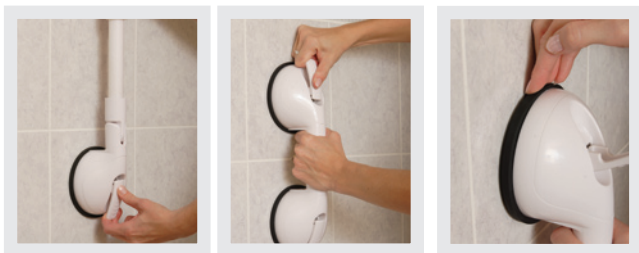
- 2 Position, apply pressure, and push down on lever to engage first vacuum seal keeping rubber pads away from any joints or grout lines. You should feel the vacuum pressure resistance.

3 Push down on lever to engage the second vacuum seal: you should feel the vacuum pressure resistance.



4 Verify firm attachment to surface before each use. If insufficient, repeat steps 1-3 until satisfied.

5 To remove handle from surface, CAREFULLY lift both levers to release vacuum seal. Levers may have built up pressure, which is normal. You may need to break seal with your finger.



BRIDGE-MEDICAL™

Get all versions for complete versatility.



Lifetime Warranty

Your Bridge-Medical product is warranted to be defect free relating to materials and workmanship for the lifetime of the original product purchaser.

It will be at Bridge-Medical's option to replace or repair defective merchandise. Normal wear and tear to non-durable components like rubber, consumer misuse, and neglect are not covered under this product warranty.





BRIDGE-MEDICAL™

2009 Bridge Companies, Inc. All Rights Reserved www.bridge-medical.com