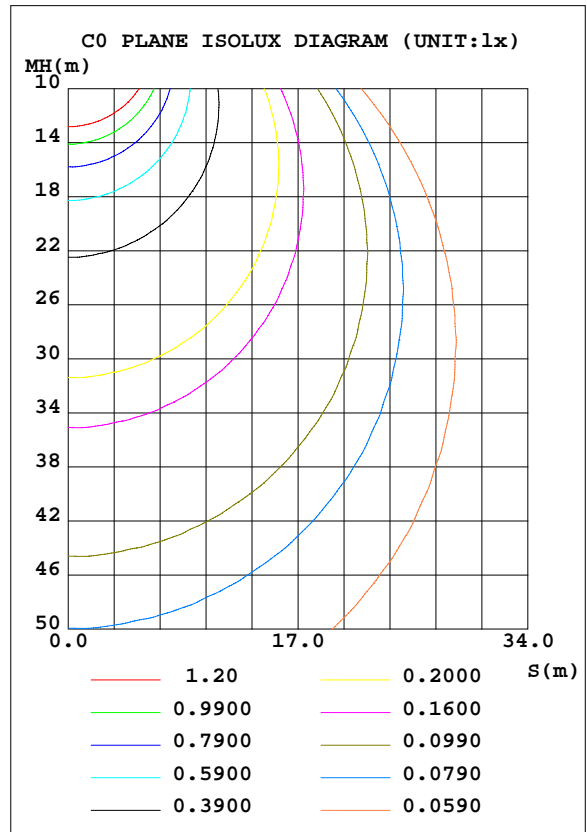
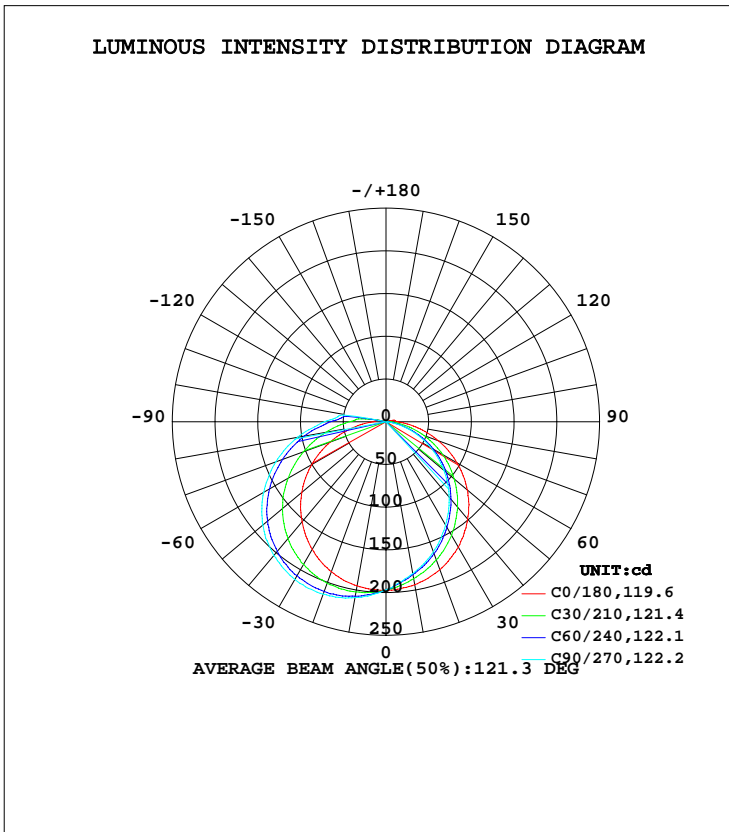


LUMINAIRE PHOTOMETRIC TEST REPORT

Test:U:229.93V I:0.0543A P:11.555W PF:0.9254 Freq:49.99Hz Lamp Flux:703.191x1 lm		
NAME: LED Ceiling light	TYPE:	WEIGHT:
SPEC.:YBCCT-WH	DIM.: 230MM	SERIAL No.:
MFR.:	SUR.:	Shielding Angle:

DATA OF LAMP		PHOTOMETRIC DATA Eff: 60.85 lm/W			
MODEL	YBCCT-WH-EYELID-NW	I _{max} (cd)	215.2	S/MH(C0/180)	1.302
NOMINAL POWER(W)	12	LOR(%)	100.0	S/MH(C90/270)	1.60
RATED VOLTAGE(V)	230	TOTAL FLUX(lm)	703.19	η UP, DN(C0-180)	0.7,35.3
NOMINAL FLUX(lm)	703.191	CIE CLASS	DIRECT	η UP, DN(C180-360)	3.3,60.6
LAMPS INSIDE	1	η up(%)	4.0	CIBSE SHR NOM	1.50
TEST VOLTAGE(V)	230	η down(%)	96.0	CIBSE SHR MAX	1.50



C Range: 0 - 360DEG
 C Interval: 30.0DEG
 Test Speed: HIGH
 Temperature:25.3DEG
 Operators:
 Test Date:20 August 2021

γ Range: 0 - 180DEG
 γ Interval: 1.0DEG
 Test System:EVERFINE GO-2000B_V1 SYSTEM V2.0.366
 Humidity:65.0%
 Test Distance:8.791m [K=1.0000]
 Remarks:

ZONAL FLUX DIAGRAM

ZONAL FLUX DIAGRAM:

γ	C0	C45	C90	C135	C180	C225	C270	C315	γ	Φ zone	Φ total	%lum,lamp
10	193.7	184.1	180.6	185.4	195.0	204.9	209.0	204.1	0- 10	18.69	18.69	2.66,2.66
20	184.5	168.2	162.1	169.7	186.9	206.3	214.7	204.6	10- 20	54.13	72.83	10.4,10.4
30	169.3	148.3	139.5	149.8	172.6	200.3	213.2	198.6	20- 30	83.61	156.4	22.2,22.2
40	148.7	124.4	115.0	126.2	152.9	188.3	204.3	185.5	30- 40	103.6	260.0	37,37
50	124.2	98.10	88.69	99.84	128.6	169.5	188.2	165.8	40- 50	111.9	371.9	52.9,52.9
60	96.00	70.25	60.57	71.53	100.5	144.8	165.0	140.0	50- 60	107.4	479.3	68.2,68.2
70	65.37	41.59	32.91	42.12	69.48	115.7	137.2	109.6	60- 70	90.87	570.1	81.1,81.1
80	35.54	15.70	8.685	15.58	38.88	84.22	105.2	77.61	70- 80	65.67	635.8	90.4,90.4
90	13.02	2.768	0.7965	3.219	14.97	54.07	72.17	46.94	80- 90	38.93	674.7	96,96
100	10.18	2.209	0.8283	2.549	10.79	17.35	36.74	10.31	90-100	22.24	697.0	99.1,99.1
110	0.5248	0.7941	0.9639	0.7873	0.5341	0.3507	0.2849	0.3644	100-110	2.739	699.7	99.5,99.5
120	0.6469	0.9118	1.063	0.9140	0.6697	0.4774	0.4072	0.5023	110-120	0.6335	700.3	99.6,99.6
130	0.7646	1.000	1.140	1.007	0.7829	0.6086	0.5430	0.6380	120-130	0.6787	701.0	99.7,99.7
140	0.8686	1.070	1.181	1.086	0.8914	0.7399	0.6831	0.7670	130-140	0.6662	701.7	99.8,99.8
150	0.9638	1.120	1.213	1.140	0.9775	0.8530	0.8098	0.8847	140-150	0.5983	702.3	99.9,99.9
160	1.050	1.165	1.208	1.186	1.068	0.9728	0.9410	1.005	150-160	0.4795	702.8	99.9,99.9
170	1.104	1.165	1.190	1.192	1.118	1.075	1.050	1.106	160-170	0.3120	703.1	100,100
180	1.127	1.149	1.158	1.179	1.127	1.138	1.140	1.167	170-180	0.1088	703.2	100,100
DEG	LUMINOUS INTENSITY:cd									UNIT:lm		

Conical surface Flux(90deg): 315.69 lm

%lum = 44.9%
 %lamp = 44.9%

Conical surface Flux(120deg): 479.27 lm

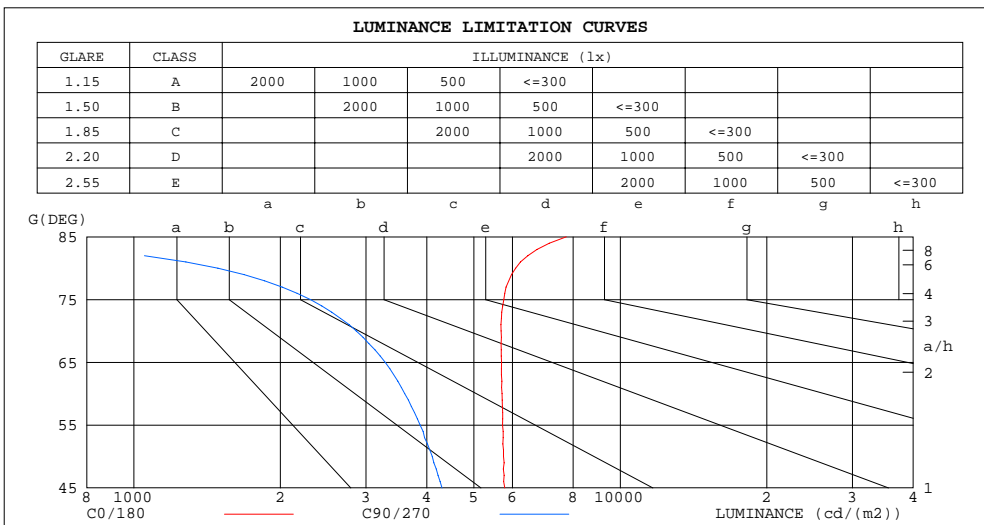
%lum = 68.2%
 %lamp = 68.2%

C Range: 0 - 360DEG
 C Interval: 30.0DEG
 Test Speed: HIGH
 Temperature:25.3DEG
 Operators:
 Test Date:20 August 2021

γ Range: 0 - 180DEG
 γ Interval: 1.0DEG
 Test System:EVERFINE GO-2000B_V1 SYSTEM V2.0.366
 Humidity:65.0%
 Test Distance:8.791m [K=1.0000]
 Remarks:

LUMINANCE LIMITATION CURVES

Test:U:229.93V I:0.0543A P:11.555W PF:0.9254 Freq:49.99Hz Lamp Flux:703.191x1 lm		
NAME: LED Ceiling light	TYPE:	WEIGHT:
SPEC.:YBCCT-WH	DIM.: 230MM	SERIAL No.:
MFR.:	SUR.:	Shielding Angle:



C Range: 0 - 360DEG
 C Interval: 30.0DEG
 Test Speed: HIGH
 Temperature:25.3DEG
 Operators:
 Test Date:20 August 2021

γ Range: 0 - 180DEG
 γ Interval: 1.0DEG
 Test System:EVERFINE GO-2000B_V1 SYSTEM V2.0.366
 Humidity:65.0%
 Test Distance:8.791m [K=1.0000]
 Remarks:

WEC AND CCEC

Test:U:229.93V I:0.0543A P:11.555W PF:0.9254 Freq:49.99Hz Lamp Flux:703.191x1 lm		
NAME: LED Ceiling light	TYPE:	WEIGHT:
SPEC.:YBCCT-WH	DIM.: 230MM	SERIAL No.:
MFR.:	SUR.:	Shielding Angle:

ρcc	80%			70%			50%			30%			10%			0
ρw	50%	30%	10%	50%	30%	10%	50%	30%	10%	50%	30%	10%	50%	30%	10%	0
ρfc	20%			20%			20%			20%			20%			0
RCR	RCR:Room Cavity Ratio						Wall Exitance Coefficients(WEC)									
0.0																
1.0	.364	.207	.066	.355	.203	.064	.339	.195	.062	.325	.187	.060	.312	.181	.058	
2.0	.324	.178	.055	.317	.175	.054	.303	.168	.052	.290	.163	.051	.278	.157	.050	
3.0	.292	.156	.047	.286	.153	.046	.273	.148	.045	.261	.143	.044	.251	.139	.043	
4.0	.265	.138	.041	.259	.136	.040	.248	.132	.039	.238	.128	.039	.228	.124	.038	
5.0	.243	.124	.036	.237	.122	.035	.227	.118	.035	.218	.115	.034	.209	.112	.034	
6.0	.223	.112	.032	.218	.110	.032	.209	.107	.031	.201	.104	.031	.193	.102	.030	
7.0	.206	.102	.029	.202	.101	.029	.194	.098	.028	.186	.095	.028	.179	.093	.027	
8.0	.192	.094	.026	.188	.092	.026	.180	.090	.026	.174	.088	.025	.167	.086	.025	
9.0	.179	.087	.024	.175	.085	.024	.169	.083	.024	.163	.081	.023	.157	.080	.023	
10.0	.168	.080	.022	.164	.079	.022	.158	.078	.022	.153	.076	.022	.147	.074	.021	

ρcc	80%			70%			50%			30%			10%			0
ρw	50%	30%	10%	50%	30%	10%	50%	30%	10%	50%	30%	10%	50%	30%	10%	0
ρfc	20%			20%			20%			20%			20%			0
RCR	RCR:Room Cavity Ratio						Ceiling Cavity Exitance Coefficients(CCEC)									
0.0	.221	.221	.221	.189	.189	.189	.129	.129	.129	.074	.074	.074	.024	.024	.024	
1.0	.215	.187	.161	.184	.160	.139	.126	.110	.096	.072	.064	.056	.023	.021	.018	
2.0	.208	.163	.125	.178	.140	.108	.122	.097	.076	.070	.056	.044	.023	.018	.014	
3.0	.200	.146	.103	.172	.126	.089	.118	.087	.062	.068	.051	.037	.022	.017	.012	
4.0	.192	.133	.087	.165	.115	.076	.114	.080	.054	.066	.047	.032	.021	.015	.010	
5.0	.185	.123	.077	.159	.106	.067	.109	.074	.047	.063	.044	.028	.020	.014	.009	
6.0	.177	.115	.070	.152	.099	.061	.105	.069	.043	.061	.041	.025	.020	.013	.008	
7.0	.170	.108	.064	.146	.093	.056	.101	.065	.040	.059	.039	.024	.019	.013	.008	
8.0	.163	.102	.060	.141	.088	.052	.097	.062	.037	.057	.037	.022	.018	.012	.007	
9.0	.157	.097	.057	.135	.084	.049	.094	.059	.035	.055	.035	.021	.018	.011	.007	
10.0	.151	.093	.054	.130	.081	.047	.090	.057	.033	.053	.034	.020	.017	.011	.007	

C Range: 0 - 360DEG
 C Interval: 30.0DEG
 Test Speed: HIGH
 Temperature:25.3DEG
 Operators:
 Test Date:20 August 2021

γ Range: 0 - 180DEG
 γ Interval: 1.0DEG
 Test System:EVERFINE GO-2000B_V1 SYSTEM V2.0.366
 Humidity:65.0%
 Test Distance:8.791m [K=1.0000]
 Remarks:

UGR(Unified Glare Rating) Table

Test:U:229.93V I:0.0543A P:11.555W PF:0.9254 Freq:49.99Hz Lamp Flux:703.191x1 lm										
NAME: LED Ceiling light					TYPE:			WEIGHT:		
SPEC.:YBCCT-WH					DIM.: 230MM			SERIAL No.:		
MFR.:					SUR.:			Shielding Angle:		
ceiling/cavity	0.7	0.7	0.5	0.5	0.3	0.7	0.7	0.5	0.5	0.3
walls	0.5	0.3	0.5	0.3	0.3	0.5	0.3	0.5	0.3	0.3
working plane	0.2	0.2	0.2	0.2	0.2	0.2	0.2	0.2	0.2	0.2
Room dimensions	Viewed crosswise					Viewed endwise				
x = 2H y = 2H	18.8	20.4	19.2	20.7	20.9	17.1	18.6	17.4	18.9	19.2
3H	20.6	22.1	21.0	22.4	22.7	18.2	19.6	18.5	19.9	20.3
4H	21.4	22.8	21.8	23.1	23.5	18.5	19.9	18.9	20.2	20.6
6H	22.2	23.5	22.6	23.8	24.2	18.7	19.9	19.0	20.3	20.7
8H	22.5	23.8	22.9	24.1	24.5	18.6	19.9	19.0	20.3	20.6
12H	22.9	24.1	23.3	24.4	24.8	18.6	19.8	19.0	20.2	20.6
4H 2H	19.1	20.5	19.5	20.8	21.2	17.7	19.1	18.1	19.4	19.8
3H	21.1	22.3	21.5	22.7	23.1	19.0	20.2	19.4	20.6	21.0
4H	22.0	23.1	22.5	23.5	24.0	19.4	20.5	19.9	20.9	21.4
6H	22.9	23.9	23.4	24.3	24.8	19.6	20.6	20.1	21.0	21.5
8H	23.3	24.3	23.8	24.7	25.2	19.6	20.6	20.1	21.0	21.5
12H	23.8	24.6	24.3	25.1	25.6	19.6	20.4	20.1	20.9	21.4
8H 4H	22.1	23.0	22.6	23.5	24.0	19.7	20.7	20.2	21.1	21.6
6H	23.1	23.9	23.6	24.4	24.9	20.0	20.8	20.5	21.3	21.8
8H	23.6	24.3	24.1	24.8	25.4	20.1	20.8	20.6	21.3	21.8
12H	24.2	24.8	24.7	25.3	25.9	20.0	20.6	20.6	21.2	21.7
12H 4H	22.1	22.9	22.6	23.4	23.9	19.8	20.6	20.3	21.1	21.6
6H	23.1	23.8	23.6	24.3	24.8	20.1	20.8	20.6	21.3	21.9
8H	23.6	24.3	24.2	24.8	25.3	20.2	20.8	20.7	21.3	21.9
Variations with the observer position at spacings:										
S = 1.0H	+ 0.1 / - 0.1					+ 0.2 / - 0.3				
1.5H	+ 0.2 / - 0.2					+ 0.2 / - 0.4				
2.0H	+ 0.3 / - 0.5					+ 0.3 / - 0.4				

CIE Pub.117, 703.2 lm Total Lamp Luminous Flux Correct (8log(F/F0) = -1.2)

C Range: 0 - 360DEG
 C Interval: 30.0DEG
 Test Speed: HIGH
 Temperature:25.3DEG
 Operators:
 Test Date:20 August 2021

γ Range: 0 - 180DEG
 γ Interval: 1.0DEG
 Test System:EVERFINE GO-2000B_V1 SYSTEM V2.0.366
 Humidity:65.0%
 Test Distance:8.791m [K=1.0000]
 Remarks:

UTILIZATION FACTORS TABLE

Test:U:229.93V I:0.0543A P:11.555W PF:0.9254 Freq:49.99Hz Lamp Flux:703.191x1 lm		
NAME: LED Ceiling light	TYPE:	WEIGHT:
SPEC.:YBCCT-WH	DIM.: 230MM	SERIAL No.:
MFR.:	SUR.:	Shielding Angle:

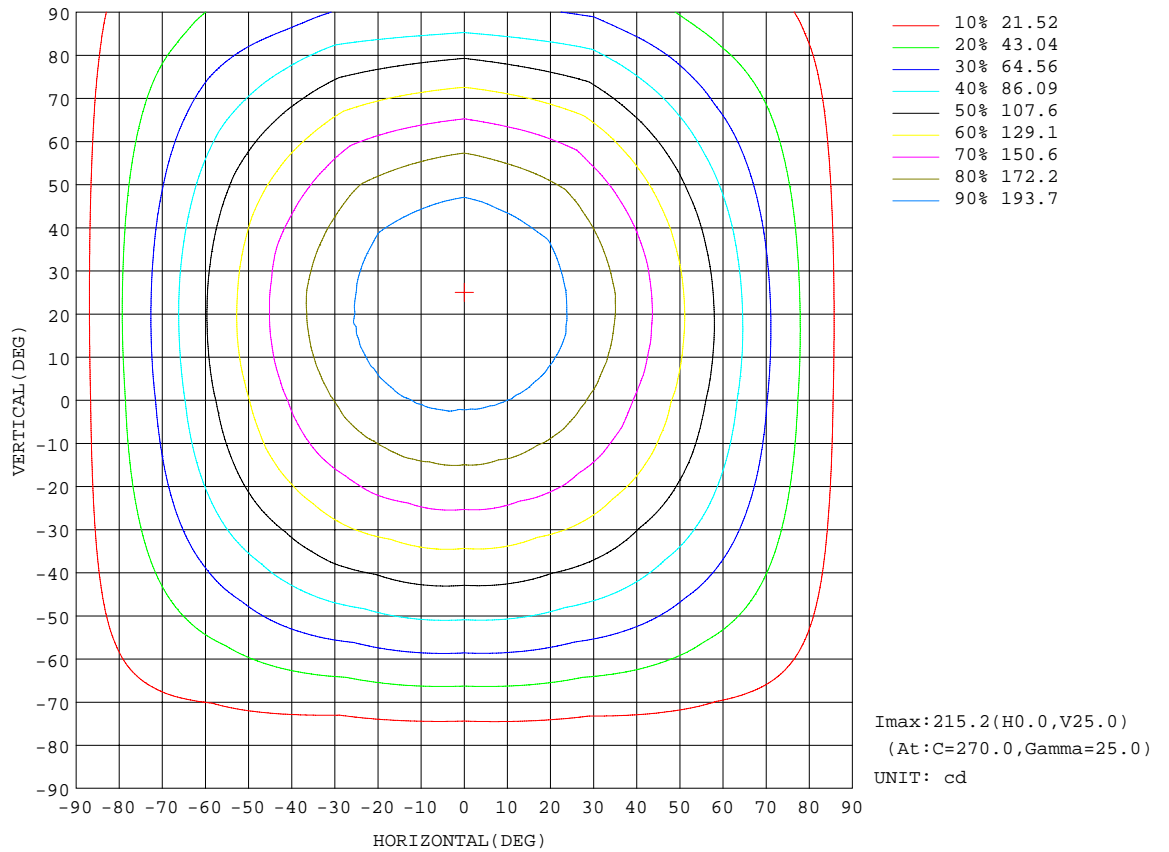
REFLECTANCE										
Ceiling	0.8	0.8	0.8	0.7	0.7	0.7	0.5	0.5	0.5	0
Walls	0.7	0.5	0.3	0.7	0.5	0.3	0.7	0.5	0.3	0
Working plane	0.2	0.2	0.2	0.2	0.2	0.2	0.2	0.2	0.2	0
ROOM INDEX	UTILIZATION FACTORS(PERCENT) $k(RI) \times RCR = 5$									
k = 0.60	53	41	34	52	41	33	51	40	33	27
0.80	63	50	42	62	50	42	60	49	42	34
1.00	71	59	51	69	58	50	67	59	50	42
1.25	78	66	58	76	65	58	73	64	57	49
1.50	83	72	64	81	71	63	78	69	62	54
2.00	90	80	72	88	79	72	84	76	70	61
2.50	94	85	78	92	84	77	88	81	75	65
3.00	98	90	83	95	88	82	91	85	79	70
4.00	102	95	89	100	93	88	95	89	85	75
5.00	105	99	94	102	97	92	97	93	89	78
ROOM INDEX	UF(total)									Direct
According to DIN EN 13032-2 2004			Suspended				SHRNOM = 1.25			

C Range: 0 - 360DEG
 C Interval: 30.0DEG
 Test Speed: HIGH
 Temperature:25.3DEG
 Operators:
 Test Date:20 August 2021

γ Range: 0 - 180DEG
 γ Interval: 1.0DEG
 Test System:EVERFINE GO-2000B_V1 SYSTEM V2.0.366
 Humidity:65.0%
 Test Distance:8.791m [K=1.0000]
 Remarks:

ISOCANDELA DIAGRAM

Test:U:229.93V I:0.0543A P:11.555W PF:0.9254 Freq:49.99Hz Lamp Flux:703.191x1 lm		
NAME: LED Ceiling light	TYPE:	WEIGHT:
SPEC.:YBCCT-WH	DIM.: 230MM	SERIAL No.:
MFR.:	SUR.:	Shielding Angle:



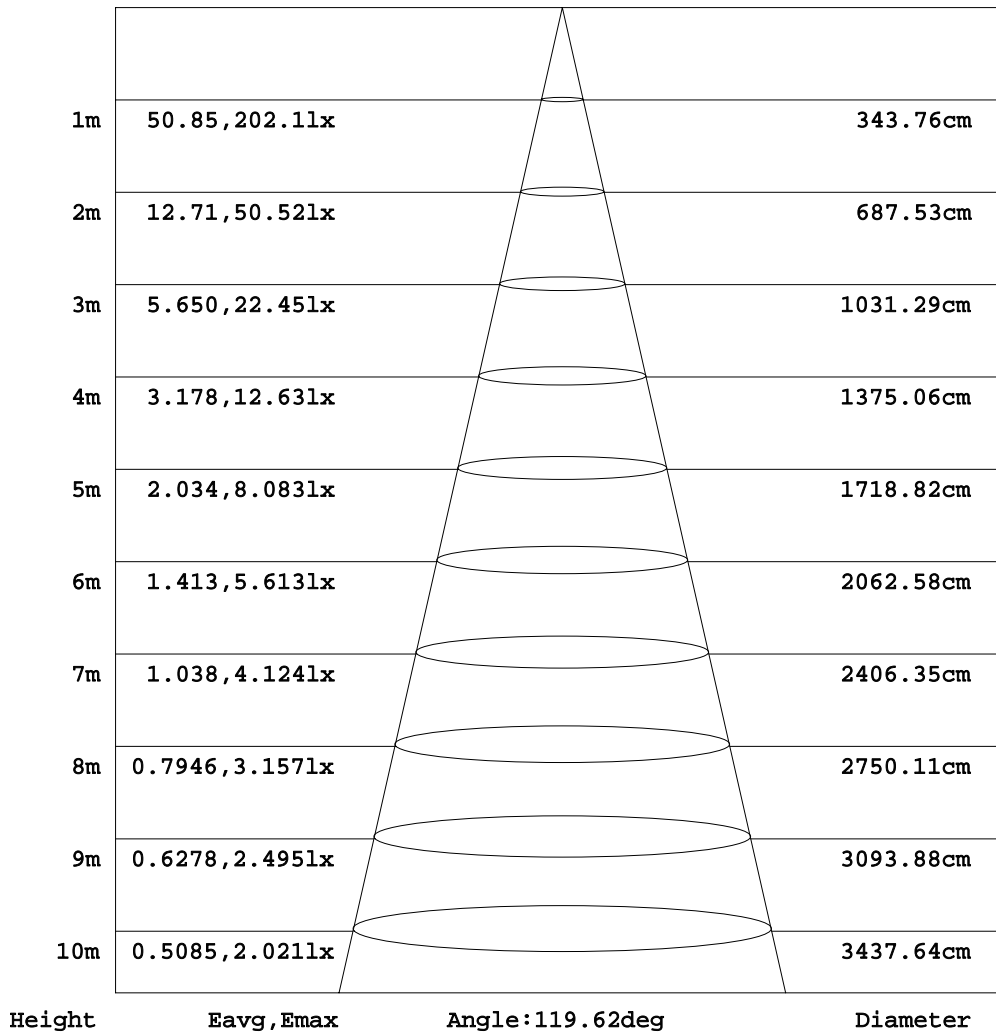
C Range: 0 - 360DEG
 C Interval: 30.0DEG
 Test Speed: HIGH
 Temperature: 25.3DEG
 Operators
 Test Date: 20 August 2021

γ Range: 0 - 180DEG
 γ Interval: 1.0DEG
 Test System: EVERFINE GO-2000B_V1 SYSTEM V2.0.366
 Humidity: 65.0%
 Test Distance: 8.791m [K=1.0000]
 Remarks:

AAI Figure

Test:U:229.93V I:0.0543A P:11.555W PF:0.9254 Freq:49.99Hz Lamp Flux:703.191x1 lm		
NAME: LED Ceiling light	TYPE:	WEIGHT:
SPEC.:YBCCT-WH	DIM.: 230MM	SERIAL No.:
MFR.:	SUR.:	Shielding Angle:

Flux out:479.3 lm

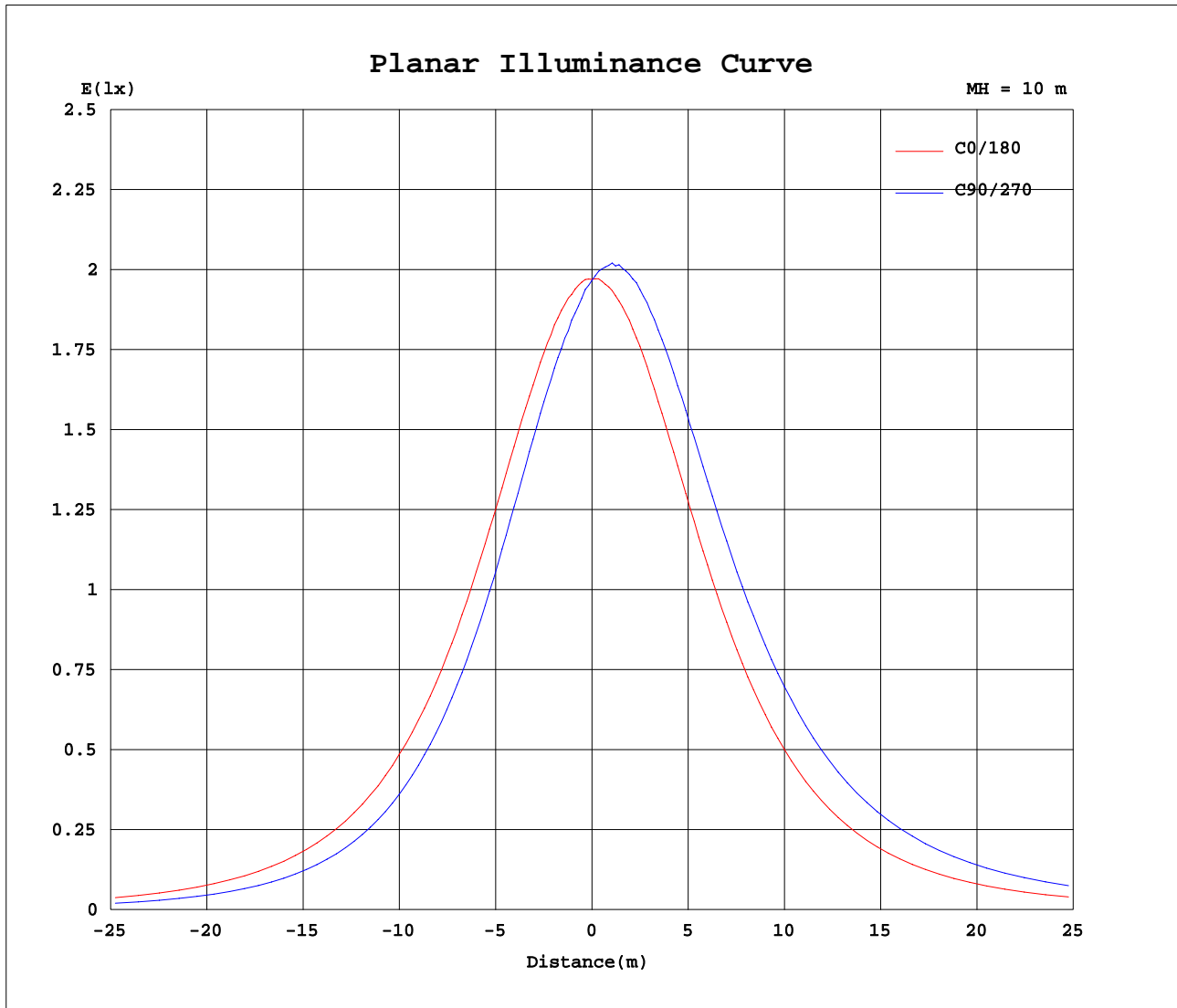


Note:The Curves indicate the illuminated area and the average illumination when the luminaire is at different distance.

C Range: 0 - 360DEG
 C Interval: 30.0DEG
 Test Speed: HIGH
 Temperature:25.3DEG
 Operators:
 Test Date:20 August 2021

γ Range: 0 - 180DEG
 γ Interval: 1.0DEG
 Test System:EVERFINE GO-2000B_V1 SYSTEM V2.0.366
 Humidity:65.0%
 Test Distance:8.791m [K=1.0000]
 Remarks:

Planar Illuminance Curve



C Range: 0 - 360DEG
 C Interval: 30.0DEG
 Test Speed: HIGH
 Temperature: 25.3DEG
 Operators:
 Test Date: 20 August 2021

γ Range: 0 - 180DEG
 γ Interval: 1.0DEG
 Test System: EVERFINE GO-2000B_V1 SYSTEM V2.0.366
 Humidity: 65.0%
 Test Distance: 8.791m [K=1.0000]
 Remarks:

LUMINOUS DISTRIBUTION INTENSITY DATA

Test:U:229.93V I:0.0543A P:11.555W PF:0.9254 Freq:49.99Hz Lamp Flux:703.191x1 lm		
NAME: LED Ceiling light	TYPE:	WEIGHT:
SPEC.:YBCCT-WH	DIM.: 230MM	SERIAL No.:
MFR.:	SUR.:	Shielding Angle:

Table--1

UNIT: cd

C (DEG) \ γ (DEG)	0	30	60	90	120	150	180	210	240	270	300	330							
0	197	197	197	197	197	198	197	197	197	197	197	198							
5	196	192	190	189	190	193	197	200	203	204	203	201							
10	194	187	182	181	183	188	195	202	207	209	206	202							
15	190	180	174	172	174	182	192	203	210	213	209	201							
20	184	172	164	162	165	174	187	201	211	215	210	199							
25	177	163	154	151	155	165	181	198	211	215	209	196							
30	169	154	143	140	144	156	173	193	208	213	207	190							
35	159	142	131	128	131	145	163	186	204	210	202	184							
40	149	130	118	115	119	133	153	179	198	204	196	175							
45	137	117	105	102	106	120	141	169	191	197	188	165							
50	124	104	92.0	88.7	92.6	107	129	158	181	188	178	153							
55	110	90.6	78.1	74.7	78.5	93.0	115	146	170	177	167	140							
60	96.0	76.6	63.9	60.6	64.2	78.8	101	132	157	165	154	126							
65	80.9	62.1	49.7	46.7	49.6	63.8	85.2	118	144	151	141	110							
70	65.4	47.5	35.7	32.9	35.4	48.8	69.5	103	129	137	126	93.5							
75	50.1	33.4	22.5	20.1	22.0	34.2	53.9	87.0	113	122	110	76.9							
80	35.5	20.6	10.9	8.68	10.1	21.1	38.9	71.4	97.0	105	94.3	60.9							
85	22.7	9.92	2.14	1.01	1.26	10.1	25.4	56.7	79.9	87.0	77.4	45.6							
90	13.0	4.80	0.74	0.80	0.72	5.72	15.0	43.0	65.2	72.2	62.0	31.9							
95	11.2	4.01	0.69	0.77	0.76	4.92	12.3	34.5	52.5	58.2	47.9	24.5							
100	10.2	3.68	0.74	0.83	0.73	4.37	10.8	16.9	17.8	36.7	10.3	10.3							
105	4.47	0.91	0.79	0.90	0.78	1.34	5.56	0.94	0.26	0.23	0.27	0.59							
110	0.52	0.72	0.87	0.96	0.86	0.72	0.53	0.38	0.33	0.28	0.34	0.39							
115	0.57	0.79	0.92	1.02	0.92	0.79	0.60	0.43	0.39	0.34	0.40	0.47							
120	0.65	0.85	0.97	1.06	0.98	0.85	0.67	0.50	0.46	0.41	0.47	0.53							
125	0.71	0.90	1.01	1.11	1.02	0.91	0.73	0.56	0.53	0.48	0.53	0.61							
130	0.76	0.95	1.05	1.14	1.05	0.96	0.78	0.62	0.59	0.54	0.61	0.67							
135	0.82	0.99	1.08	1.17	1.09	1.01	0.83	0.69	0.65	0.61	0.67	0.74							
140	0.87	1.02	1.12	1.18	1.12	1.05	0.89	0.76	0.72	0.68	0.74	0.80							
145	0.91	1.05	1.13	1.20	1.14	1.09	0.93	0.81	0.78	0.75	0.80	0.85							
150	0.96	1.09	1.15	1.21	1.16	1.12	0.98	0.86	0.85	0.81	0.86	0.91							
155	1.00	1.11	1.18	1.21	1.19	1.15	1.02	0.92	0.91	0.86	0.93	0.97							
160	1.05	1.14	1.19	1.21	1.19	1.18	1.07	0.98	0.96	0.94	0.99	1.02							
165	1.08	1.14	1.19	1.20	1.19	1.19	1.09	1.03	1.02	1.00	1.05	1.05							
170	1.10	1.14	1.19	1.19	1.19	1.19	1.12	1.07	1.08	1.05	1.10	1.11							
175	1.12	1.14	1.19	1.18	1.19	1.18	1.13	1.12	1.12	1.10	1.14	1.13							
180	1.13	1.14	1.16	1.16	1.18	1.18	1.13	1.14	1.14	1.14	1.16	1.17							

C Range: 0 - 360DEG
 C Interval: 30.0DEG
 Test Speed: HIGH
 Temperature:25.3DEG
 Operators:
 Test Date:20 August 2021

γ Range: 0 - 180DEG
 γ Interval: 1.0DEG
 Test System:EVERFINE GO-2000B_V1 SYSTEM V2.0.366
 Humidity:65.0%
 Test Distance:8.791m [K=1.0000]
 Remarks: