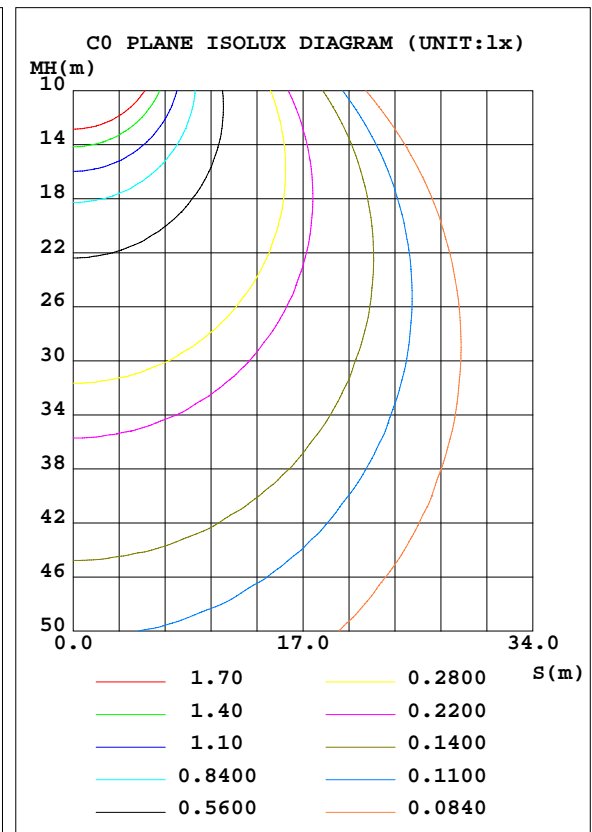
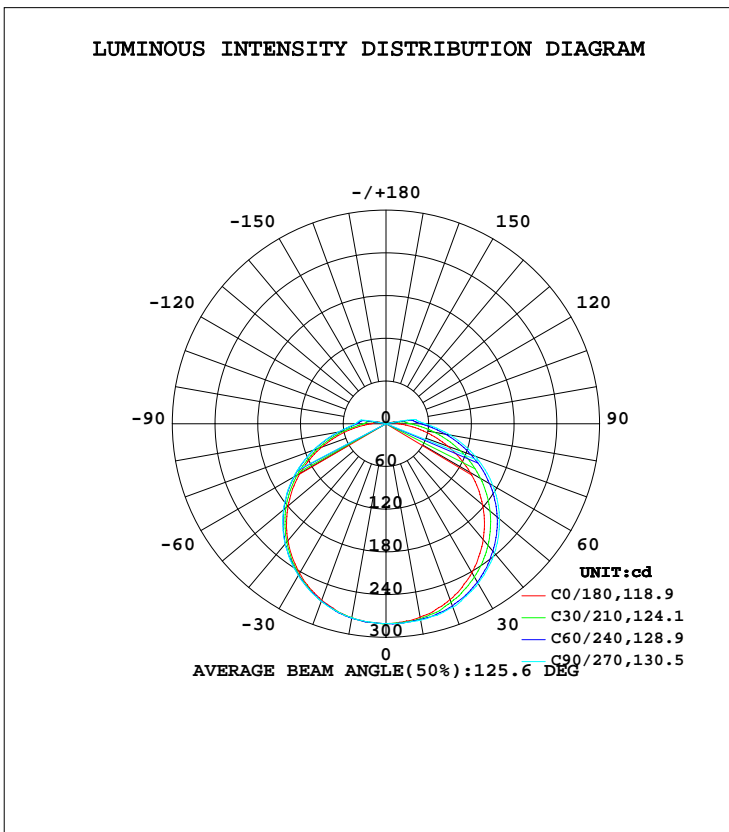


LUMINAIRE PHOTOMETRIC TEST REPORT

Test:U:229.96V I:0.0563A P:12.025W PF:0.9283 Freq:49.99Hz Lamp Flux:1001.48x1 lm		
NAME: LED Ceiling light	TYPE:	WEIGHT:
SPEC.:YBCCT-WH	DIM.: 230MM	SERIAL No.:
MFR.:	SUR.:	Shielding Angle:

DATA OF LAMP		PHOTOMETRIC DATA Eff: 83.28 lm/W			
MODEL	YBCCT-WH-WW	I _{max} (cd)	281.3	S/MH(C0/180)	1.292
NOMINAL POWER(W)	12	LOR(%)	100.0	S/MH(C90/270)	1.31
RATED VOLTAGE(V)	230	TOTAL FLUX(lm)	1001.5	η UP, DN(C0-180)	2.2,49.7
NOMINAL FLUX(lm)	1001.48	CIE CLASS	DIRECT	η UP, DN(C180-360)	2.0,46.1
LAMPS INSIDE	1	η up(%)	4.1	CIBSE SHR NOM	1.50
TEST VOLTAGE(V)	230	η down(%)	95.9	CIBSE SHR MAX	1.50



C Range: 0 - 360DEG
 C Interval: 30.0DEG
 Test Speed: HIGH
 Temperature:25.3DEG
 Operators:
 Test Date:20 August 2021

γ Range: 0 - 180DEG
 γ Interval: 1.0DEG
 Test System:EVERFINE GO-2000B_V1 SYSTEM V2.0.366
 Humidity:65.0%
 Test Distance:8.791m [K=1.0000]
 Remarks:

ZONAL FLUX DIAGRAM

ZONAL FLUX DIAGRAM:

γ	C0	C45	C90	C135	C180	C225	C270	C315	γ	Φ zone	Φ total	%lum,lamp
10	275.9	278.6	280.2	278.7	276.7	277.0	277.0	276.1	0- 10	26.65	26.65	2.66,2.66
20	262.7	269.7	274.4	269.6	263.8	265.2	265.3	263.7	10- 20	77.20	103.8	10.4,10.4
30	241.4	252.5	258.9	252.6	242.6	245.2	246.2	242.9	20- 30	119.2	223.0	22.3,22.3
40	212.6	228.3	236.7	227.9	214.2	218.4	220.6	215.6	30- 40	147.6	370.6	37,37
50	176.9	197.3	208.2	197.0	179.3	185.4	188.1	182.0	40- 50	159.5	530.1	52.9,52.9
60	136.4	160.5	173.3	159.8	139.5	146.8	150.2	142.7	50- 60	153.2	683.3	68.2,68.2
70	92.49	119.2	133.3	118.2	95.87	104.6	108.3	98.64	60- 70	129.4	812.6	81.1,81.1
80	49.66	77.02	91.35	75.94	53.01	63.85	68.56	57.02	70- 80	93.00	905.6	90.4,90.4
90	17.39	41.85	55.12	40.71	20.32	36.28	43.16	29.45	80- 90	54.68	960.3	95.9,95.9
100	12.75	14.46	30.68	12.67	15.65	14.96	28.46	10.12	90-100	32.01	992.3	99.1,99.1
110	0.7602	0.7941	0.8599	0.8076	0.7786	0.8757	0.9320	0.8553	100-110	4.119	996.4	99.5,99.5
120	0.9679	0.9819	1.023	0.9865	0.9776	1.059	1.113	1.043	110-120	0.9187	997.3	99.6,99.6
130	1.136	1.147	1.190	1.152	1.154	1.215	1.258	1.195	120-130	0.9855	998.3	99.7,99.7
140	1.280	1.299	1.321	1.301	1.312	1.358	1.366	1.339	130-140	0.9684	999.3	99.8,99.8
150	1.425	1.432	1.453	1.428	1.448	1.477	1.480	1.471	140-150	0.8710	1000	99.9,99.9
160	1.548	1.557	1.566	1.550	1.570	1.579	1.579	1.579	150-160	0.6982	1001	99.9,99.9
170	1.634	1.638	1.634	1.643	1.643	1.652	1.638	1.647	160-170	0.4543	1001	100,100
180	1.661	1.674	1.670	1.683	1.661	1.686	1.656	1.686	170-180	0.1580	1001	100,100
DEG	LUMINOUS INTENSITY:cd									UNIT:lm		

Conical surface Flux(90deg): 450.02 lm

%lum = 44.9%
%lamp = 44.9%

Conical surface Flux(120deg): 683.26 lm

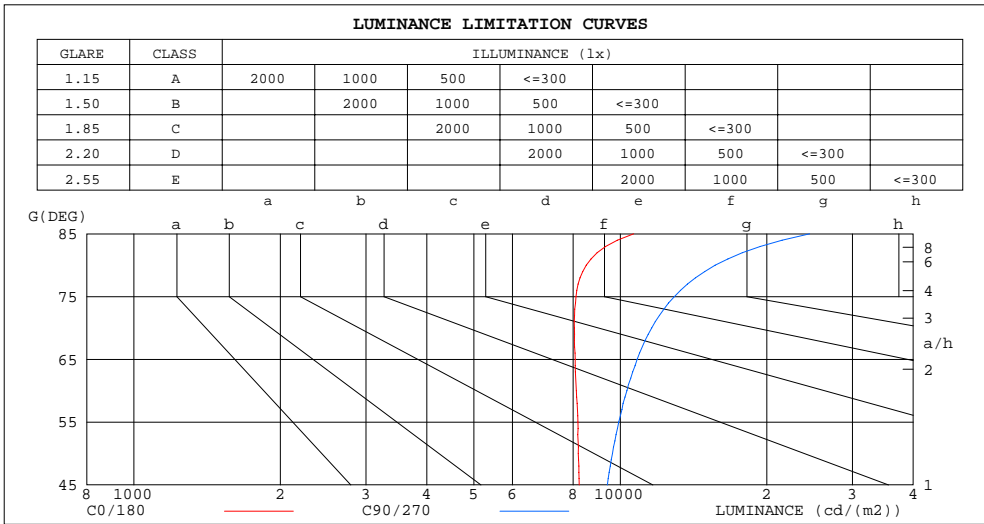
%lum = 68.2%
%lamp = 68.2%

C Range: 0 - 360DEG
C Interval: 30.0DEG
Test Speed: HIGH
Temperature:25.3DEG
Operators:
Test Date:20 August 2021

γ Range: 0 - 180DEG
γ Interval: 1.0DEG
Test System:EVERFINE GO-2000B_V1 SYSTEM V2.0.366
Humidity:65.0%
Test Distance:8.791m [K=1.0000]
Remarks:

LUMINANCE LIMITATION CURVES

Test:U:229.96V I:0.0563A P:12.025W PF:0.9283 Freq:49.99Hz Lamp Flux:1001.48x1 lm		
NAME: LED Ceiling light	TYPE:	WEIGHT:
SPEC.:YBCCT-WH	DIM.: 230MM	SERIAL No.:
MFR.:	SUR.:	Shielding Angle:



LUMINANCE cd/(m2)		
G (DEG)	C0/180	C90/270
85	10653	24494
80	8512	15657
75	8109	12916
70	8048	11604
65	8079	10831
60	8119	10315
55	8180	9929
50	8192	9638
45	8229	9406

C Range: 0 - 360DEG
 C Interval: 30.0DEG
 Test Speed: HIGH
 Temperature:25.3DEG
 Operators:
 Test Date:20 August 2021

γ Range: 0 - 180DEG
 γ Interval: 1.0DEG
 Test System:EVERFINE GO-2000B_V1 SYSTEM V2.0.366
 Humidity:65.0%
 Test Distance:8.791m [K=1.0000]
 Remarks:

WEC AND CCEC

Test:U:229.96V I:0.0563A P:12.025W PF:0.9283 Freq:49.99Hz Lamp Flux:1001.48x1 lm		
NAME: LED Ceiling light	TYPE:	WEIGHT:
SPEC.:YBCCT-WH	DIM.: 230MM	SERIAL No.:
MFR.:	SUR.:	Shielding Angle:

ρcc	80%			70%			50%			30%			10%			0
ρw	50%	30%	10%	50%	30%	10%	50%	30%	10%	50%	30%	10%	50%	30%	10%	0
ρfc	20%			20%			20%			20%			20%			0
RCR	RCR:Room Cavity Ratio						Wall Exitance Coefficients(WEC)									
0.0																
1.0	.363	.206	.065	.354	.202	.064	.338	.194	.062	.324	.187	.060	.310	.180	.058	
2.0	.324	.178	.054	.316	.174	.054	.302	.168	.052	.289	.162	.051	.277	.157	.049	
3.0	.292	.155	.047	.285	.153	.046	.273	.148	.045	.261	.143	.044	.250	.139	.043	
4.0	.265	.138	.041	.259	.136	.040	.248	.131	.039	.237	.127	.038	.228	.124	.038	
5.0	.242	.123	.036	.237	.122	.035	.227	.118	.035	.217	.115	.034	.209	.112	.034	
6.0	.223	.112	.032	.218	.110	.032	.209	.107	.031	.201	.104	.031	.193	.101	.030	
7.0	.206	.102	.029	.202	.101	.029	.194	.098	.028	.186	.095	.028	.179	.093	.027	
8.0	.192	.094	.026	.188	.092	.026	.180	.090	.026	.173	.088	.025	.167	.086	.025	
9.0	.179	.087	.024	.175	.085	.024	.169	.083	.024	.162	.081	.023	.156	.079	.023	
10.0	.168	.080	.022	.164	.079	.022	.158	.078	.022	.153	.076	.022	.147	.074	.021	

ρcc	80%			70%			50%			30%			10%			0
ρw	50%	30%	10%	50%	30%	10%	50%	30%	10%	50%	30%	10%	50%	30%	10%	0
ρfc	20%			20%			20%			20%			20%			0
RCR	RCR:Room Cavity Ratio						Ceiling Cavity Exitance Coefficients(CCEC)									
0.0	.222	.222	.222	.190	.190	.190	.129	.129	.129	.074	.074	.074	.024	.024	.024	
1.0	.216	.187	.162	.184	.161	.139	.126	.111	.096	.073	.064	.056	.023	.021	.018	
2.0	.208	.164	.126	.178	.141	.109	.122	.097	.076	.071	.057	.045	.023	.018	.015	
3.0	.201	.146	.103	.172	.126	.089	.118	.088	.063	.068	.051	.037	.022	.017	.012	
4.0	.193	.133	.088	.166	.115	.076	.114	.080	.054	.066	.047	.032	.021	.015	.010	
5.0	.185	.123	.078	.159	.107	.068	.110	.075	.048	.063	.044	.028	.020	.014	.009	
6.0	.178	.115	.070	.153	.100	.061	.105	.070	.043	.061	.041	.026	.020	.013	.008	
7.0	.171	.108	.065	.147	.094	.056	.101	.066	.040	.059	.039	.024	.019	.013	.008	
8.0	.164	.103	.060	.141	.089	.053	.098	.062	.037	.057	.037	.022	.018	.012	.007	
9.0	.158	.098	.057	.136	.085	.050	.094	.060	.035	.055	.035	.021	.018	.012	.007	
10.0	.152	.093	.055	.131	.081	.048	.091	.057	.034	.053	.034	.020	.017	.011	.007	

C Range: 0 - 360DEG
 C Interval: 30.0DEG
 Test Speed: HIGH
 Temperature:25.3DEG
 Operators:
 Test Date:20 August 2021

γ Range: 0 - 180DEG
 γ Interval: 1.0DEG
 Test System:EVERFINE GO-2000B_V1 SYSTEM V2.0.366
 Humidity:65.0%
 Test Distance:8.791m [K=1.0000]
 Remarks:

UGR(Unified Glare Rating) Table

Test:U:229.96V I:0.0563A P:12.025W PF:0.9283 Freq:49.99Hz Lamp Flux:1001.48x1 lm										
NAME: LED Ceiling light					TYPE:			WEIGHT:		
SPEC.:YBCCT-WH					DIM.: 230MM			SERIAL No.:		
MFR.:					SUR.:			Shielding Angle:		
ceiling/cavity	0.7	0.7	0.5	0.5	0.3	0.7	0.7	0.5	0.5	0.3
walls	0.5	0.3	0.5	0.3	0.3	0.5	0.3	0.5	0.3	0.3
working plane	0.2	0.2	0.2	0.2	0.2	0.2	0.2	0.2	0.2	0.2
Room dimensions	Viewed crosswise					Viewed endwise				
x = 2H y = 2H	20.0	21.6	20.4	21.9	22.2	20.9	22.5	21.3	22.8	23.1
3H	21.8	23.2	22.2	23.5	23.9	23.1	24.5	23.5	24.9	25.2
4H	22.6	24.0	23.0	24.3	24.6	24.2	25.6	24.6	25.9	26.3
6H	23.3	24.6	23.7	24.9	25.3	25.3	26.6	25.7	27.0	27.3
8H	23.6	24.8	24.0	25.2	25.6	25.9	27.2	26.3	27.5	27.9
12H	23.8	25.1	24.3	25.4	25.8	26.5	27.8	27.0	28.1	28.5
4H 2H	20.9	22.3	21.3	22.6	23.0	21.6	23.0	22.0	23.3	23.6
3H	22.9	24.1	23.3	24.5	24.9	24.0	25.2	24.4	25.6	26.0
4H	23.9	25.0	24.3	25.4	25.8	25.3	26.4	25.7	26.8	27.2
6H	24.7	25.7	25.2	26.2	26.6	26.6	27.6	27.0	28.0	28.5
8H	25.1	26.1	25.6	26.5	27.0	27.3	28.2	27.7	28.6	29.1
12H	25.5	26.3	26.0	26.8	27.3	28.0	28.9	28.5	29.3	29.8
8H 4H	24.5	25.4	25.0	25.9	26.3	25.6	26.6	26.1	27.0	27.5
6H	25.6	26.4	26.1	26.9	27.4	27.2	28.0	27.7	28.5	29.0
8H	26.2	26.9	26.7	27.4	27.9	28.1	28.8	28.6	29.3	29.8
12H	26.7	27.3	27.3	27.9	28.4	29.1	29.7	29.6	30.2	30.8
12H 4H	24.6	25.5	25.1	26.0	26.5	25.7	26.6	26.2	27.0	27.5
6H	25.9	26.6	26.4	27.1	27.6	27.4	28.1	27.9	28.6	29.1
8H	26.6	27.2	27.1	27.7	28.3	28.3	28.9	28.9	29.4	30.0
Variations with the observer position at spacings:										
S = 1.0H	+ 0.1 / - 0.2					+ 0.1 / - 0.1				
1.5H	+ 0.2 / - 0.3					+ 0.2 / - 0.3				
2.0H	+ 0.2 / - 0.4					+ 0.2 / - 0.3				

CIE Pub.117, 1001 lm Total Lamp Luminous Flux Correct (8log(F/F0) = 0.0)

C Range: 0 - 360DEG

C Interval: 30.0DEG

Test Speed: HIGH

Temperature:25.3DEG

Operators:

Test Date:20 August 2021

γ Range: 0 - 180DEG

γ Interval: 1.0DEG

Test System:EVERFINE GO-2000B_V1 SYSTEM V2.0.366

Humidity:65.0%

Test Distance:8.791m [K=1.0000]

Remarks:

UTILIZATION FACTORS TABLE

Test:U:229.96V I:0.0563A P:12.025W PF:0.9283 Freq:49.99Hz Lamp Flux:1001.48x1 lm		
NAME: LED Ceiling light	TYPE:	WEIGHT:
SPEC.:YBCCT-WH	DIM.: 230MM	SERIAL No.:
MFR.:	SUR.:	Shielding Angle:

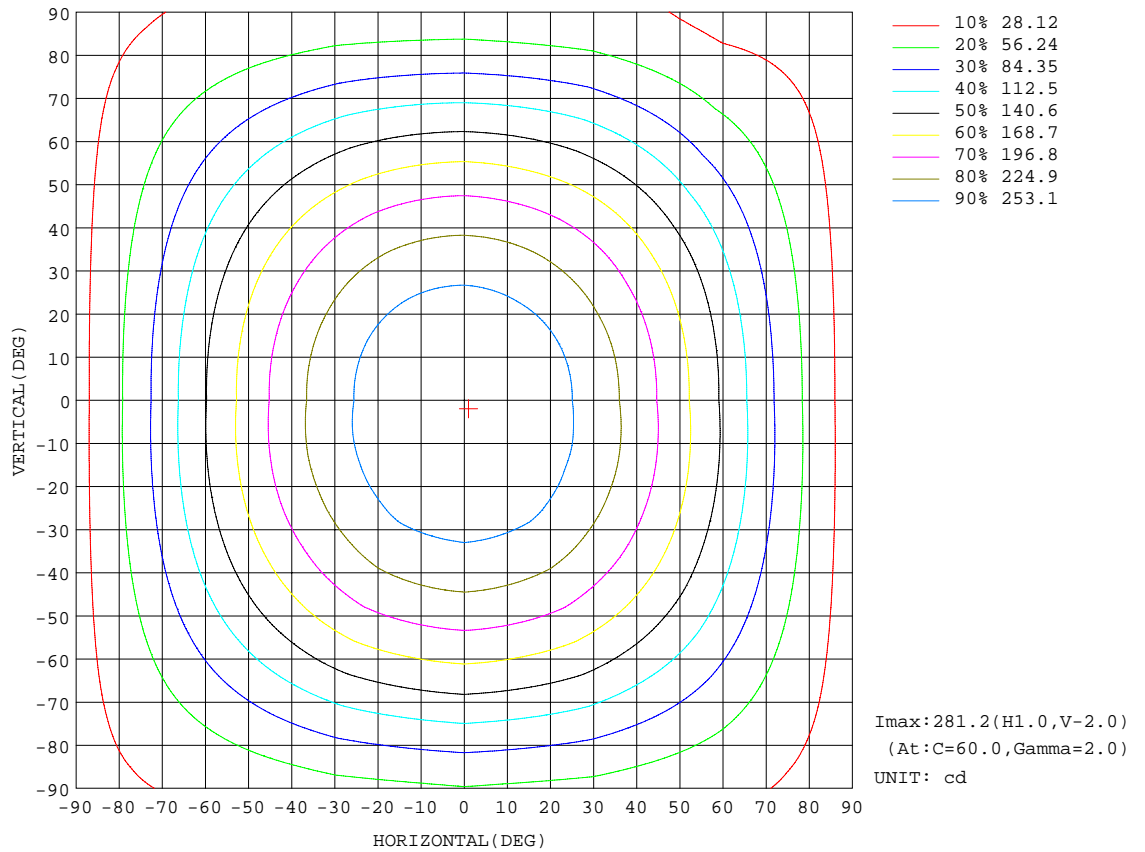
REFLECTANCE										
Ceiling	0.8	0.8	0.8	0.7	0.7	0.7	0.5	0.5	0.5	0
Walls	0.7	0.5	0.3	0.7	0.5	0.3	0.7	0.5	0.3	0
Working plane	0.2	0.2	0.2	0.2	0.2	0.2	0.2	0.2	0.2	0
ROOM INDEX	UTILIZATION FACTORS(PERCENT) $k(RI) \times RCR = 5$									
k = 0.60	53	41	34	52	41	33	51	40	33	27
0.80	63	50	42	62	50	42	60	49	42	34
1.00	71	59	51	69	58	50	67	59	50	42
1.25	78	66	58	76	65	58	73	64	57	49
1.50	83	72	64	81	71	63	78	69	62	54
2.00	90	80	73	88	79	72	84	76	70	61
2.50	94	85	78	92	84	77	88	81	75	65
3.00	98	90	83	95	88	82	91	85	79	70
4.00	102	95	90	100	93	88	95	89	85	75
5.00	105	99	94	102	97	92	97	93	89	78
ROOM INDEX	UF(total)									Direct
According to DIN EN 13032-2 2004			Suspended				SHRNOM = 1.25			

C Range: 0 - 360DEG
 C Interval: 30.0DEG
 Test Speed: HIGH
 Temperature:25.3DEG
 Operators:
 Test Date:20 August 2021

γ Range: 0 - 180DEG
 γ Interval: 1.0DEG
 Test System:EVERFINE GO-2000B_V1 SYSTEM V2.0.366
 Humidity:65.0%
 Test Distance:8.791m [K=1.0000]
 Remarks:

ISOCANDELA DIAGRAM

Test:U:229.96V I:0.0563A P:12.025W PF:0.9283 Freq:49.99Hz Lamp Flux:1001.48x1 lm		
NAME: LED Ceiling light	TYPE:	WEIGHT:
SPEC.:YBCCT-WH	DIM.: 230MM	SERIAL No.:
MFR.:	SUR.:	Shielding Angle:

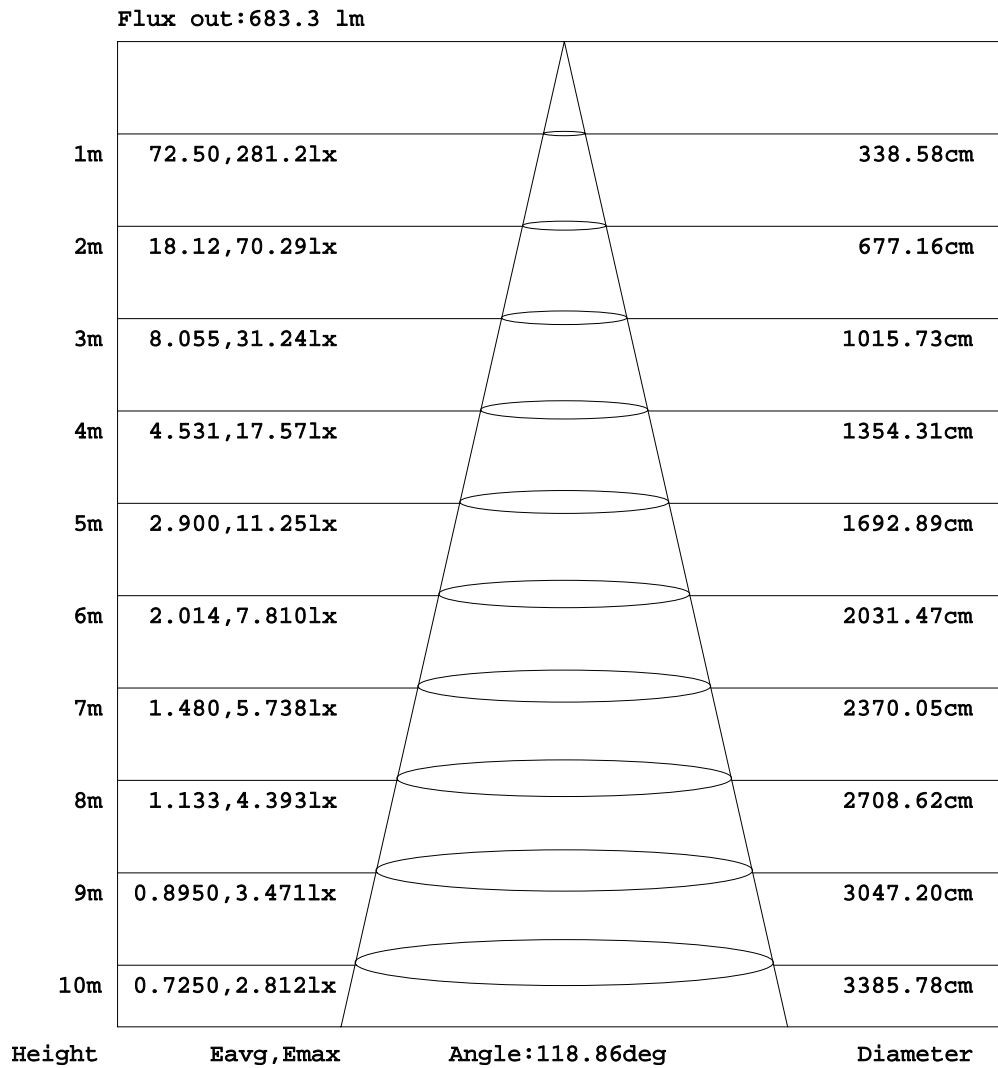


C Range: 0 - 360DEG
 C Interval: 30.0DEG
 Test Speed: HIGH
 Temperature: 25.3DEG
 Operators
 Test Date: 20 August 2021

γ Range: 0 - 180DEG
 γ Interval: 1.0DEG
 Test System: EVERFINE GO-2000B_V1 SYSTEM V2.0.366
 Humidity: 65.0%
 Test Distance: 8.791m [K=1.0000]
 Remarks:

AAI Figure

Test:U:229.96V I:0.0563A P:12.025W PF:0.9283 Freq:49.99Hz Lamp Flux:1001.48x1 lm		
NAME: LED Ceiling light	TYPE:	WEIGHT:
SPEC.:YBCCT-WH	DIM.: 230MM	SERIAL No.:
MFR.:	SUR.:	Shielding Angle:

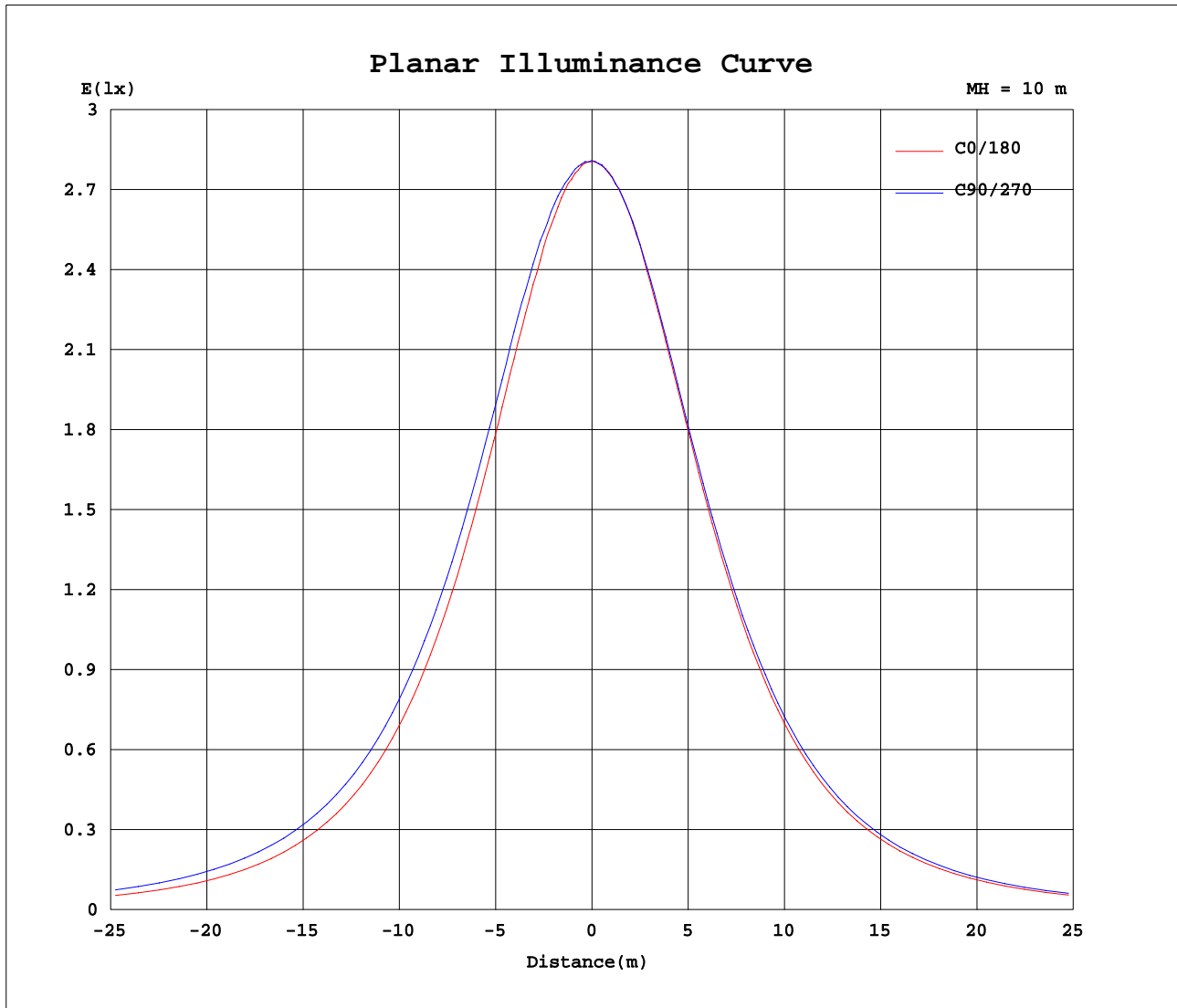


Note:The Curves indicate the illuminated area and the average illumination when the luminaire is at different distance.

C Range: 0 - 360DEG
 C Interval: 30.0DEG
 Test Speed: HIGH
 Temperature:25.3DEG
 Operators:
 Test Date:20 August 2021

γ Range: 0 - 180DEG
 γ Interval: 1.0DEG
 Test System:EVERFINE GO-2000B_V1 SYSTEM V2.0.366
 Humidity:65.0%
 Test Distance:8.791m [K=1.0000]
 Remarks:

Planar Illuminance Curve



C Range: 0 - 360DEG
 C Interval: 30.0DEG
 Test Speed: HIGH
 Temperature: 25.3DEG
 Operators:
 Test Date: 20 August 2021

γ Range: 0 - 180DEG
 γ Interval: 1.0DEG
 Test System: EVERFINE GO-2000B_V1 SYSTEM V2.0.366
 Humidity: 65.0%
 Test Distance: 8.791m [K=1.0000]
 Remarks:

LUMINOUS DISTRIBUTION INTENSITY DATA

Test:U:229.96V I:0.0563A P:12.025W PF:0.9283 Freq:49.99Hz Lamp Flux:1001.48x1 lm		
NAME: LED Ceiling light	TYPE:	WEIGHT:
SPEC.:YBCCT-WH	DIM.: 230MM	SERIAL No.:
MFR.:	SUR.:	Shielding Angle:

Table--1

UNIT: cd

C(DEG) γ (DEG)	0	30	60	90	120	150	180	210	240	270	300	330							
0	280	281	281	281	280	281	280	281	281	281	280	281							
5	279	280	281	281	280	281	280	280	280	279	280	280							
10	276	278	279	280	279	279	277	277	278	277	276	276							
15	270	274	277	278	276	274	271	272	273	272	271	271							
20	263	267	273	274	272	268	264	265	265	265	264	263							
25	253	258	265	267	265	259	254	256	256	256	255	254							
30	241	248	257	259	256	249	243	245	246	246	244	242							
35	227	237	246	249	245	237	229	232	233	234	231	229							
40	213	223	234	237	233	223	214	217	220	221	217	214							
45	196	208	220	223	219	207	198	201	204	205	202	197							
50	177	191	204	208	203	190	179	184	187	188	185	179							
55	158	173	187	191	186	172	160	165	169	170	166	160							
60	136	153	168	173	167	153	139	145	149	150	146	139							
65	115	133	148	154	147	132	118	123	129	129	126	116							
70	92.5	112	127	133	126	111	95.9	101	108	108	105	92.7							
75	70.5	90.0	106	112	105	88.9	73.9	80.2	86.8	87.7	83.6	70.5							
80	49.7	69.1	84.9	91.4	83.8	68.1	53.0	60.3	67.4	68.6	64.0	50.0							
85	31.2	49.9	65.5	71.7	64.3	48.8	34.4	42.7	51.1	52.8	47.5	32.1							
90	17.4	34.4	49.3	55.1	48.2	33.2	20.3	31.6	41.0	43.2	37.5	21.4							
95	14.5	27.7	40.2	45.3	39.6	27.4	17.4	27.7	36.6	38.7	32.7	18.4							
100	12.7	13.1	15.8	30.7	9.56	15.8	15.7	15.2	14.8	28.5	10.5	9.71							
105	6.18	1.22	0.71	0.76	0.70	1.91	6.61	1.08	0.84	0.84	0.81	0.87							
110	0.76	0.79	0.80	0.86	0.80	0.81	0.78	0.82	0.93	0.93	0.91	0.80							
115	0.85	0.89	0.89	0.94	0.90	0.90	0.88	0.91	1.02	1.01	1.00	0.90							
120	0.97	0.98	0.98	1.02	0.98	1.00	0.98	1.01	1.11	1.11	1.09	1.00							
125	1.05	1.07	1.06	1.11	1.06	1.08	1.06	1.09	1.19	1.18	1.17	1.07							
130	1.14	1.15	1.14	1.19	1.14	1.16	1.15	1.17	1.26	1.26	1.24	1.15							
135	1.21	1.23	1.21	1.26	1.22	1.24	1.24	1.25	1.33	1.31	1.30	1.24							
140	1.28	1.31	1.29	1.32	1.28	1.32	1.31	1.33	1.38	1.37	1.37	1.31							
145	1.35	1.38	1.36	1.38	1.35	1.38	1.38	1.39	1.45	1.43	1.44	1.37							
150	1.43	1.44	1.42	1.45	1.42	1.44	1.45	1.45	1.51	1.48	1.50	1.44							
155	1.49	1.51	1.49	1.52	1.49	1.52	1.51	1.51	1.56	1.53	1.55	1.50							
160	1.55	1.57	1.54	1.57	1.53	1.57	1.57	1.56	1.60	1.58	1.60	1.56							
165	1.59	1.60	1.59	1.60	1.57	1.62	1.62	1.62	1.64	1.62	1.64	1.59							
170	1.63	1.64	1.63	1.63	1.63	1.65	1.64	1.64	1.66	1.64	1.67	1.62							
175	1.64	1.68	1.65	1.67	1.65	1.68	1.66	1.66	1.68	1.65	1.69	1.66							
180	1.66	1.68	1.67	1.67	1.67	1.69	1.66	1.68	1.69	1.66	1.68	1.69							

C Range: 0 - 360DEG
 C Interval: 30.0DEG
 Test Speed: HIGH
 Temperature:25.3DEG
 Operators:
 Test Date:20 August 2021

γ Range: 0 - 180DEG
 γ Interval: 1.0DEG
 Test System:EVERFINE GO-2000B_V1 SYSTEM V2.0.366
 Humidity:65.0%
 Test Distance:8.791m [K=1.0000]
 Remarks: