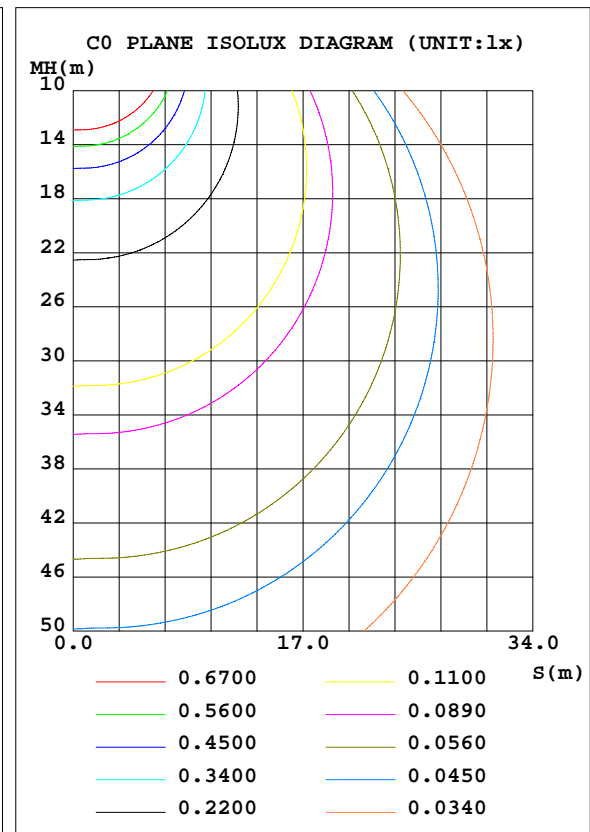
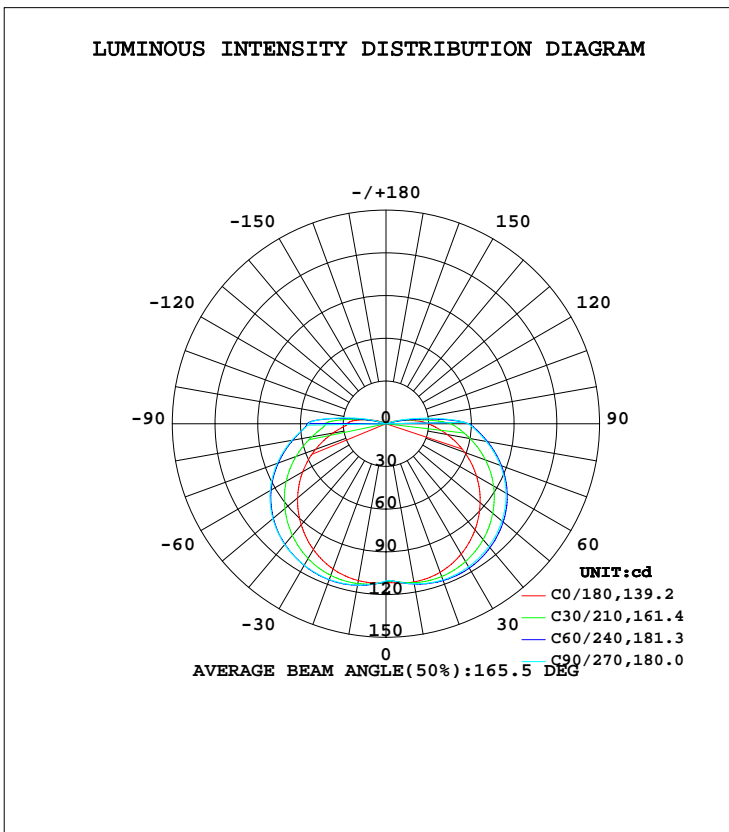


**LUMINAIRE PHOTOMETRIC TEST REPORT**

|  |             |                  |
|--|-------------|------------------|
| Test:U:230.03V I:0.0695A P:8.0508W PF:0.5034 Freq:0Hz Lamp Flux:588.112x1 lm |             |                  |
| NAME: LED Ceiling light  | TYPE:       | WEIGHT:          |
| SPEC.:200  | DIM.: 200MM | SERIAL No.:      |
| MFR.:  | SUR.:       | Shielding Angle: |

| DATA OF LAMP     |         | PHOTOMETRIC DATA |        |                    |          |
|------------------|---------|------------------|--------|--------------------|----------|
| MODEL            | YBL8W3K | Imax(cd)         | 117.5  | S/MH(C0/180)       | 1.35     |
| NOMINAL POWER(W) | 8       | LOR(%)           | 100.0  | S/MH(C90/270)      | 1.55     |
| RATED VOLTAGE(V) | 230     | TOTAL FLUX(lm)   | 588.11 | η UP, DN(C0-180)   | 4.0,46.6 |
| NOMINAL FLUX(lm) | 588.112 | CIE CLASS        | DIRECT | η UP, DN(C180-360) | 4.2,45.2 |
| LAMPS INSIDE     | 1       | η up(%)          | 8.2    | CIBSE SHR NOM      | 1.75     |
| TEST VOLTAGE(V)  | 230     | η down(%)        | 91.8   | CIBSE SHR MAX      | 1.75     |



C Range: 0 - 360DEG  
 C Interval: 30.0DEG  
 Test Speed: HIGH  
 Temperature:25.3DEG  
 Operators:  
 Test Date:16 November 2020

γ Range: 0 - 180DEG  
 γ Interval: 1.0DEG  
 Test System:EVERFINE GO-2000B\_V1 SYSTEM V2.0.366  
 Humidity:65.0%  
 Test Distance:8.791m [K=1.0000]  
 Remarks:

ZONAL FLUX DIAGRAM

ZONAL FLUX DIAGRAM:

| γ   | C0                    | C45    | C90    | C135   | C180   | C225   | C270   | C315   | γ       | Φ zone  | Φ total | %lum, lamp |
|-----|-----------------------|--------|--------|--------|--------|--------|--------|--------|---------|---------|---------|------------|
| 10  | 112.8                 | 113.8  | 114.1  | 113.2  | 111.8  | 114.6  | 115.0  | 114.1  | 0- 10   | 10.76   | 10.76   | 1.83,1.83  |
| 20  | 111.0                 | 115.7  | 116.7  | 114.7  | 108.6  | 115.0  | 116.4  | 115.5  | 10- 20  | 32.45   | 43.21   | 7.35,7.35  |
| 30  | 105.7                 | 114.4  | 116.0  | 113.1  | 102.0  | 112.1  | 114.7  | 113.8  | 20- 30  | 52.54   | 95.75   | 16.3,16.3  |
| 40  | 97.23                 | 109.9  | 112.4  | 108.2  | 92.66  | 106.4  | 110.7  | 109.3  | 30- 40  | 68.80   | 164.5   | 28,28      |
| 50  | 86.35                 | 102.6  | 106.3  | 100.8  | 81.02  | 97.96  | 103.7  | 102.0  | 40- 50  | 79.61   | 244.2   | 41.5,41.5  |
| 60  | 73.42                 | 92.78  | 97.35  | 90.69  | 67.52  | 87.04  | 93.88  | 92.07  | 50- 60  | 83.89   | 328.0   | 55.8,55.8  |
| 70  | 58.83                 | 80.37  | 85.48  | 78.11  | 52.65  | 73.83  | 81.30  | 79.42  | 60- 70  | 81.11   | 409.2   | 69.6,69.6  |
| 80  | 43.61                 | 66.16  | 71.51  | 64.08  | 37.78  | 59.69  | 67.17  | 64.83  | 70- 80  | 71.88   | 481.0   | 81.8,81.8  |
| 90  | 29.58                 | 51.92  | 57.73  | 51.49  | 27.17  | 48.98  | 54.54  | 50.57  | 80- 90  | 58.88   | 539.9   | 91.8,91.8  |
| 100 | 14.62                 | 15.94  | 21.80  | 17.27  | 16.51  | 18.67  | 23.35  | 17.76  | 90-100  | 37.02   | 576.9   | 98.1,98.1  |
| 110 | 3.422                 | 0.6615 | 0.5476 | 1.705  | 5.525  | 1.724  | 0.8835 | 0.9201 | 100-110 | 8.454   | 585.4   | 99.5,99.5  |
| 120 | 0.4840                | 0.5226 | 0.5928 | 0.5521 | 0.5249 | 0.5701 | 0.6108 | 0.5385 | 110-120 | 0.7755  | 586.2   | 99.7,99.7  |
| 130 | 0.5430                | 0.5589 | 0.6155 | 0.5951 | 0.5747 | 0.6018 | 0.6244 | 0.5791 | 120-130 | 0.5085  | 586.7   | 99.8,99.8  |
| 140 | 0.5927                | 0.6085 | 0.6426 | 0.6177 | 0.6155 | 0.6358 | 0.6380 | 0.5996 | 130-140 | 0.4664  | 587.1   | 99.8,99.8  |
| 150 | 0.6289                | 0.6335 | 0.6652 | 0.6471 | 0.6561 | 0.6561 | 0.6651 | 0.6403 | 140-150 | 0.3976  | 587.5   | 99.9,99.9  |
| 160 | 0.6787                | 0.6742 | 0.6878 | 0.6833 | 0.6968 | 0.6901 | 0.6833 | 0.6629 | 150-160 | 0.3069  | 587.9   | 100,100    |
| 170 | 0.6878                | 0.6946 | 0.6968 | 0.6968 | 0.7104 | 0.7036 | 0.6923 | 0.6968 | 160-170 | 0.1955  | 588.0   | 100,100    |
| 180 | 0.7059                | 0.7059 | 0.7014 | 0.7014 | 0.7104 | 0.7082 | 0.6968 | 0.6991 | 170-180 | 0.0668  | 588.1   | 100,100    |
| DEG | LUMINOUS INTENSITY:cd |        |        |        |        |        |        |        |         | UNIT:lm |         |            |

Conical surface Flux(90deg): 203.39 lm

%lum = 34.6%  
 %lamp = 34.6%

Conical surface Flux(120deg): 328.04 lm

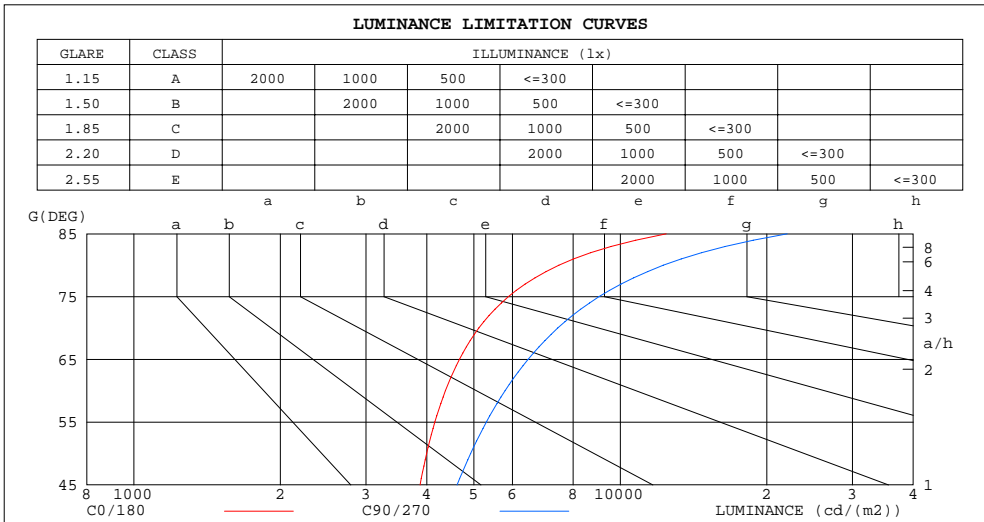
%lum = 55.8%  
 %lamp = 55.8%

C Range: 0 - 360DEG  
 C Interval: 30.0DEG  
 Test Speed: HIGH  
 Temperature:25.3DEG  
 Operators:  
 Test Date:16 November 2020

γ Range: 0 - 180DEG  
 γ Interval: 1.0DEG  
 Test System:EVERFINE GO-2000B\_V1 SYSTEM V2.0.366  
 Humidity:65.0%  
 Test Distance:8.791m [K=1.0000]  
 Remarks:

**LUMINANCE LIMITATION CURVES**

|  |             |                  |
|--|-------------|------------------|
| Test:U:230.03V I:0.0695A P:8.0508W PF:0.5034 Freq:0Hz Lamp Flux:588.112x1 lm |             |                  |
| NAME: LED Ceiling light  | TYPE:       | WEIGHT:          |
| SPEC.:200  | DIM.: 200MM | SERIAL No.:      |
| MFR.:  | SUR.:       | Shielding Angle: |



| LUMINANCE cd/(m2) |        |         |
|-------------------|--------|---------|
| G (DEG)           | C0/180 | C90/270 |
| 85                | 12420  | 22027   |
| 80                | 7474   | 12257   |
| 75                | 5890   | 9045    |
| 70                | 5119   | 7438    |
| 65                | 4669   | 6463    |
| 60                | 4370   | 5795    |
| 55                | 4157   | 5303    |
| 50                | 3998   | 4923    |
| 45                | 3875   | 4618    |

C Range: 0 - 360DEG  
 C Interval: 30.0DEG  
 Test Speed: HIGH  
 Temperature:25.3DEG  
 Operators:  
 Test Date:16 November 2020

γ Range: 0 - 180DEG  
 γ Interval: 1.0DEG  
 Test System:EVERFINE GO-2000B\_V1 SYSTEM V2.0.366  
 Humidity:65.0%  
 Test Distance:8.791m [K=1.0000]  
 Remarks:

WEC AND CCEC

|  |             |                  |
|--|-------------|------------------|
| Test:U:230.03V I:0.0695A P:8.0508W PF:0.5034 Freq:0Hz Lamp Flux:588.112x1 lm |             |                  |
| NAME: LED Ceiling light  | TYPE:       | WEIGHT:          |
| SPEC.:200  | DIM.: 200MM | SERIAL No.:      |
| MFR.:  | SUR.:       | Shielding Angle: |

| ρcc  | 80%                   |      |      | 70%  |      |      | 50%                             |      |      | 30%  |      |      | 10%  |      |      | 0 |
|------|-----------------------|------|------|------|------|------|---------------------------------|------|------|------|------|------|------|------|------|---|
| ρw   | 50%                   | 30%  | 10%  | 50%  | 30%  | 10%  | 50%                             | 30%  | 10%  | 50%  | 30%  | 10%  | 50%  | 30%  | 10%  | 0 |
| ρfc  | 20%                   |      |      | 20%  |      |      | 20%                             |      |      | 20%  |      |      | 20%  |      |      | 0 |
| RCR  | RCR:Room Cavity Ratio |      |      |      |      |      | Wall Exitance Coefficients(WEC) |      |      |      |      |      |      |      |      |   |
| 0.0  |                       |      |      |      |      |      |                                 |      |      |      |      |      |      |      |      |   |
| 1.0  | .430                  | .245 | .077 | .420 | .240 | .076 | .402                            | .230 | .074 | .385 | .222 | .071 | .369 | .214 | .069 |   |
| 2.0  | .365                  | .200 | .061 | .356 | .196 | .060 | .340                            | .189 | .059 | .324 | .182 | .057 | .310 | .175 | .055 |   |
| 3.0  | .320                  | .170 | .051 | .312 | .167 | .050 | .297                            | .161 | .049 | .284 | .155 | .048 | .271 | .150 | .046 |   |
| 4.0  | .286                  | .148 | .044 | .279 | .146 | .043 | .265                            | .141 | .042 | .253 | .136 | .041 | .241 | .131 | .040 |   |
| 5.0  | .258                  | .131 | .038 | .251 | .129 | .038 | .239                            | .125 | .037 | .228 | .120 | .036 | .218 | .116 | .035 |   |
| 6.0  | .235                  | .118 | .034 | .229 | .116 | .033 | .218                            | .112 | .033 | .208 | .108 | .032 | .199 | .105 | .031 |   |
| 7.0  | .216                  | .107 | .030 | .211 | .105 | .030 | .201                            | .101 | .029 | .191 | .098 | .029 | .183 | .095 | .028 |   |
| 8.0  | .199                  | .097 | .027 | .195 | .096 | .027 | .186                            | .093 | .026 | .177 | .090 | .026 | .169 | .087 | .025 |   |
| 9.0  | .185                  | .090 | .025 | .181 | .088 | .025 | .173                            | .085 | .024 | .165 | .083 | .024 | .158 | .080 | .023 |   |
| 10.0 | .173                  | .083 | .023 | .169 | .082 | .023 | .161                            | .079 | .022 | .154 | .077 | .022 | .148 | .074 | .021 |   |

| ρcc  | 80%                   |      |      | 70%  |      |      | 50%  |      |      | 30%  |      |      | 10%  |      |      | 0 |
|------|-----------------------|------|------|------|------|------|--|------|------|------|------|------|------|------|------|---|
| ρw   | 50%                   | 30%  | 10%  | 50%  | 30%  | 10%  | 50%  | 30%  | 10%  | 50%  | 30%  | 10%  | 50%  | 30%  | 10%  | 0 |
| ρfc  | 20%                   |      |      | 20%  |      |      | 20%  |      |      | 20%  |      |      | 20%  |      |      | 0 |
| RCR  | RCR:Room Cavity Ratio |      |      |      |      |      | Ceiling Cavity Exitance Coefficients(CCEC) |      |      |      |      |      |      |      |      |   |
| 0.0  | .253                  | .253 | .253 | .216 | .216 | .216 | .148                                       | .148 | .148 | .085 | .085 | .085 | .027 | .027 | .027 |   |
| 1.0  | .252                  | .218 | .188 | .215 | .187 | .162 | .147                                       | .129 | .112 | .085 | .074 | .065 | .027 | .024 | .021 |   |
| 2.0  | .245                  | .195 | .153 | .210 | .168 | .132 | .144                                       | .116 | .092 | .083 | .068 | .054 | .027 | .022 | .018 |   |
| 3.0  | .238                  | .178 | .131 | .204 | .154 | .113 | .140                                       | .107 | .080 | .081 | .062 | .047 | .026 | .020 | .015 |   |
| 4.0  | .230                  | .166 | .117 | .197 | .143 | .102 | .136                                       | .100 | .071 | .078 | .058 | .042 | .025 | .019 | .014 |   |
| 5.0  | .222                  | .156 | .107 | .190 | .135 | .093 | .131                                       | .094 | .066 | .076 | .055 | .039 | .024 | .018 | .013 |   |
| 6.0  | .214                  | .148 | .100 | .184 | .128 | .087 | .127                                       | .090 | .062 | .074 | .053 | .037 | .024 | .017 | .012 |   |
| 7.0  | .206                  | .141 | .095 | .178 | .122 | .083 | .123                                       | .086 | .059 | .071 | .051 | .035 | .023 | .017 | .012 |   |
| 8.0  | .199                  | .135 | .092 | .172 | .118 | .080 | .119                                       | .082 | .057 | .069 | .049 | .034 | .022 | .016 | .011 |   |
| 9.0  | .193                  | .131 | .089 | .166 | .113 | .077 | .115                                       | .080 | .055 | .067 | .047 | .033 | .022 | .015 | .011 |   |
| 10.0 | .186                  | .126 | .086 | .161 | .110 | .075 | .111                                       | .077 | .054 | .065 | .046 | .032 | .021 | .015 | .011 |   |

C Range: 0 - 360DEG  
 C Interval: 30.0DEG  
 Test Speed: HIGH  
 Temperature:25.3DEG  
 Operators:  
 Test Date:16 November 2020

γ Range: 0 - 180DEG  
 γ Interval: 1.0DEG  
 Test System:EVERFINE GO-2000B\_V1 SYSTEM V2.0.366  
 Humidity:65.0%  
 Test Distance:8.791m [K=1.0000]  
 Remarks:

UGR(Unified Glare Rating) Table

|  |                  |      |      |      |             |                |      |                  |      |      |
|--|------------------|------|------|------|-------------|----------------|------|------------------|------|------|
| Test:U:230.03V I:0.0695A P:8.0508W PF:0.5034 Freq:0Hz Lamp Flux:588.112x1 lm |                  |      |      |      |             |                |      |                  |      |      |
| NAME: LED Ceiling light  |                  |      |      |      | TYPE:       |                |      | WEIGHT:          |      |      |
| SPEC.:200  |                  |      |      |      | DIM.: 200MM |                |      | SERIAL No.:      |      |      |
| MFR.:  |                  |      |      |      | SUR.:       |                |      | Shielding Angle: |      |      |
| ceiling/cavity   | 0.7              | 0.7  | 0.5  | 0.5  | 0.3         | 0.7            | 0.7  | 0.5              | 0.5  | 0.3  |
| walls  | 0.5              | 0.3  | 0.5  | 0.3  | 0.3         | 0.5            | 0.3  | 0.5              | 0.3  | 0.3  |
| working plane  | 0.2              | 0.2  | 0.2  | 0.2  | 0.2         | 0.2            | 0.2  | 0.2              | 0.2  | 0.2  |
| Room dimensions  | Viewed crosswise |      |      |      |             | Viewed endwise |      |                  |      |      |
| x = 2H y = 2H  | 19.3             | 20.9 | 19.7 | 21.3 | 21.7        | 20.5           | 22.1 | 20.9             | 22.4 | 22.8 |
| 3H   | 21.6             | 23.1 | 22.0 | 23.5 | 23.9        | 23.1           | 24.6 | 23.6             | 25.0 | 25.4 |
| 4H   | 22.8             | 24.2 | 23.2 | 24.6 | 25.0        | 24.6           | 26.0 | 25.0             | 26.4 | 26.9 |
| 6H   | 24.0             | 25.3 | 24.4 | 25.7 | 26.2        | 26.2           | 27.5 | 26.6             | 27.9 | 28.4 |
| 8H   | 24.6             | 25.9 | 25.1 | 26.4 | 26.8        | 27.0           | 28.3 | 27.5             | 28.8 | 29.2 |
| 12H  | 25.3             | 26.6 | 25.8 | 27.0 | 27.5        | 28.0           | 29.3 | 28.5             | 29.7 | 30.2 |
| 4H 2H  | 20.5             | 21.9 | 20.9 | 22.3 | 22.8        | 21.3           | 22.7 | 21.7             | 23.1 | 23.5 |
| 3H   | 23.0             | 24.2 | 23.5 | 24.7 | 25.2        | 24.2           | 25.5 | 24.7             | 25.9 | 26.4 |
| 4H   | 24.3             | 25.5 | 24.8 | 26.0 | 26.5        | 25.8           | 27.0 | 26.3             | 27.5 | 28.0 |
| 6H   | 25.7             | 26.7 | 26.2 | 27.3 | 27.8        | 27.6           | 28.6 | 28.1             | 29.1 | 29.7 |
| 8H   | 26.4             | 27.4 | 27.0 | 27.9 | 28.5        | 28.6           | 29.5 | 29.1             | 30.1 | 30.6 |
| 12H  | 27.2             | 28.1 | 27.8 | 28.7 | 29.3        | 29.7           | 30.6 | 30.2             | 31.1 | 31.7 |
| 8H 4H  | 25.2             | 26.2 | 25.7 | 26.7 | 27.3        | 26.4           | 27.4 | 26.9             | 27.9 | 28.5 |
| 6H   | 26.9             | 27.7 | 27.5 | 28.3 | 28.9        | 28.5           | 29.3 | 29.0             | 29.9 | 30.5 |
| 8H   | 27.8             | 28.6 | 28.4 | 29.2 | 29.8        | 29.6           | 30.4 | 30.2             | 31.0 | 31.6 |
| 12H  | 28.8             | 29.5 | 29.4 | 30.1 | 30.8        | 31.0           | 31.7 | 31.6             | 32.2 | 32.9 |
| 12H 4H   | 25.4             | 26.4 | 26.0 | 26.9 | 27.5        | 26.5           | 27.4 | 27.0             | 27.9 | 28.5 |
| 6H   | 27.3             | 28.1 | 27.9 | 28.6 | 29.3        | 28.7           | 29.4 | 29.3             | 30.0 | 30.7 |
| 8H   | 28.4             | 29.0 | 29.0 | 29.6 | 30.3        | 30.0           | 30.7 | 30.6             | 31.2 | 31.9 |
| Variations with the observer position at spacings:                           |                  |      |      |      |             |                |      |                  |      |      |
| S = 1.0H   | + 0.1 / - 0.1    |      |      |      |             | + 0.1 / - 0.1  |      |                  |      |      |
| 1.5H   | + 0.2 / - 0.3    |      |      |      |             | + 0.2 / - 0.3  |      |                  |      |      |
| 2.0H   | + 0.3 / - 0.4    |      |      |      |             | + 0.3 / - 0.4  |      |                  |      |      |

CIE Pub.117, 588.1 lm Total Lamp Luminous Flux Correct (8log(F/F0) = -1.8)

C Range: 0 - 360DEG  
 C Interval: 30.0DEG  
 Test Speed: HIGH  
 Temperature:25.3DEG  
 Operators:  
 Test Date:16 November 2020

γ Range: 0 - 180DEG  
 γ Interval: 1.0DEG  
 Test System:EVERFINE GO-2000B\_V1 SYSTEM V2.0.366  
 Humidity:65.0%  
 Test Distance:8.791m [K=1.0000]  
 Remarks:

UTILIZATION FACTORS TABLE

|  |             |                  |
|--|-------------|------------------|
| Test:U:230.03V I:0.0695A P:8.0508W PF:0.5034 Freq:0Hz Lamp Flux:588.112x1 lm |             |                  |
| NAME: LED Ceiling light  | TYPE:       | WEIGHT:          |
| SPEC.:200  | DIM.: 200MM | SERIAL No.:      |
| MFR.:  | SUR.:       | Shielding Angle: |

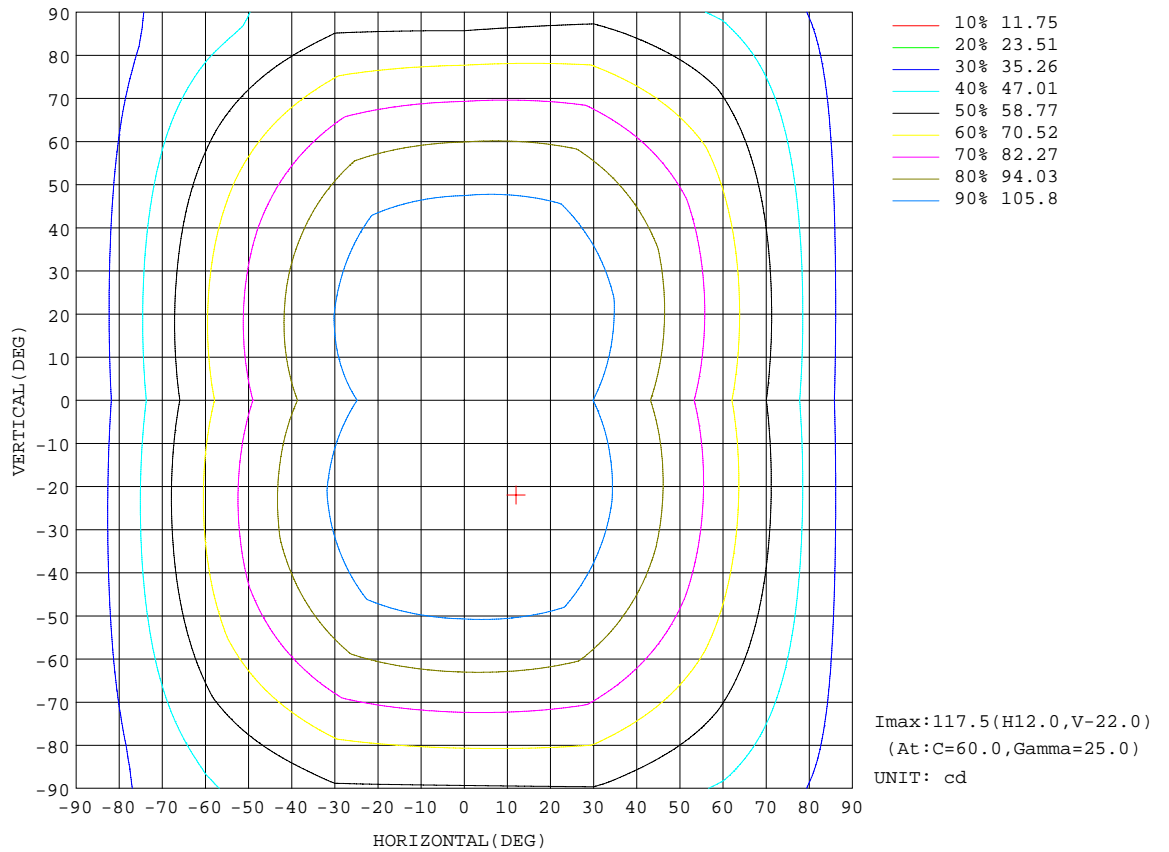
| REFLECTANCE                      |   |     |           |     |     |     |               |     |     |        |
|----------------------------------|---|-----|-----------|-----|-----|-----|---------------|-----|-----|--------|
| Ceiling                          | 0.8   | 0.8 | 0.8       | 0.7 | 0.7 | 0.7 | 0.5           | 0.5 | 0.5 | 0      |
| Walls                            | 0.7   | 0.5 | 0.3       | 0.7 | 0.5 | 0.3 | 0.7           | 0.5 | 0.3 | 0      |
| Working plane                    | 0.2   | 0.2 | 0.2       | 0.2 | 0.2 | 0.2 | 0.2           | 0.2 | 0.2 | 0      |
| ROOM INDEX                       | UTILIZATION FACTORS(PERCENT) $k(RI) \times RCR = 5$ |     |           |     |     |     |               |     |     |        |
| k = 0.60                         | 48  | 35  | 27        | 47  | 35  | 27  | 46            | 34  | 27  | 20     |
| 0.80                             | 57  | 43  | 35        | 56  | 43  | 35  | 54            | 42  | 34  | 26     |
| 1.00                             | 65  | 51  | 42        | 63  | 50  | 42  | 60            | 52  | 41  | 33     |
| 1.25                             | 72  | 58  | 49        | 70  | 58  | 49  | 66            | 56  | 48  | 39     |
| 1.50                             | 77  | 64  | 55        | 75  | 63  | 54  | 71            | 61  | 53  | 44     |
| 2.00                             | 84  | 73  | 64        | 82  | 71  | 63  | 77            | 68  | 61  | 51     |
| 2.50                             | 89  | 78  | 70        | 86  | 76  | 68  | 81            | 73  | 66  | 55     |
| 3.00                             | 93  | 83  | 75        | 90  | 81  | 74  | 85            | 77  | 71  | 60     |
| 4.00                             | 98  | 89  | 82        | 95  | 87  | 80  | 89            | 83  | 77  | 65     |
| 5.00                             | 101   | 93  | 87        | 98  | 91  | 85  | 92            | 86  | 81  | 69     |
| ROOM INDEX                       | UF(total)   |     |           |     |     |     |               |     |     | Direct |
| According to DIN EN 13032-2 2004 |   |     | Suspended |     |     |     | SHRNOM = 1.25 |     |     |        |

C Range: 0 - 360DEG  
 C Interval: 30.0DEG  
 Test Speed: HIGH  
 Temperature:25.3DEG  
 Operators:  
 Test Date:16 November 2020

$\gamma$  Range: 0 - 180DEG  
 $\gamma$  Interval: 1.0DEG  
 Test System:EVERFINE GO-2000B\_V1 SYSTEM V2.0.366  
 Humidity:65.0%  
 Test Distance:8.791m [K=1.0000]  
 Remarks:

**ISOCANDELA DIAGRAM**

|  |             |                  |
|--|-------------|------------------|
| Test:U:230.03V I:0.0695A P:8.0508W PF:0.5034 Freq:0Hz Lamp Flux:588.112x1 lm |             |                  |
| NAME: LED Ceiling light  | TYPE:       | WEIGHT:          |
| SPEC.:200  | DIM.: 200MM | SERIAL No.:      |
| MFR.:  | SUR.:       | Shielding Angle: |

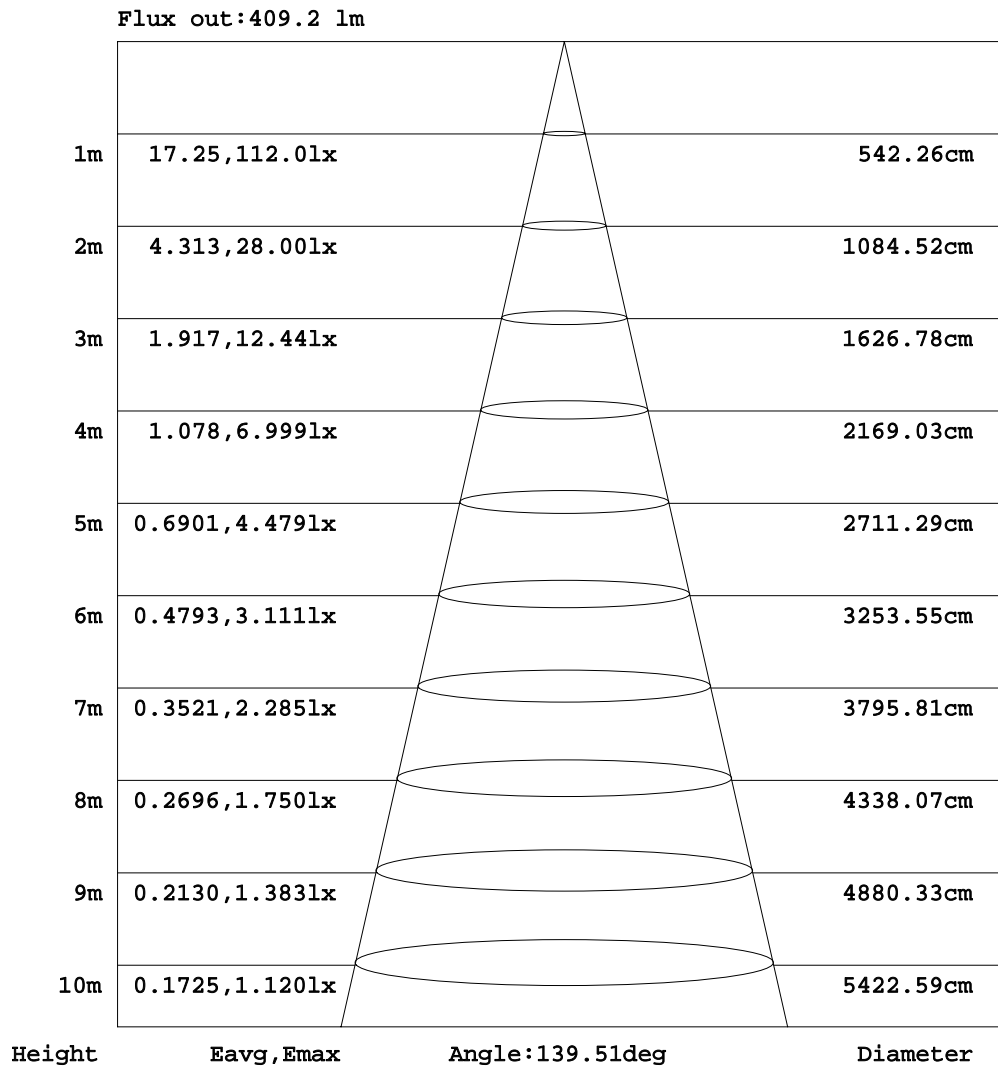


C Range: 0 - 360DEG  
 C Interval: 30.0DEG  
 Test Speed: HIGH  
 Temperature: 25.3DEG  
 Operators:  
 Test Date: 16 November 2020

γ Range: 0 - 180DEG  
 γ Interval: 1.0DEG  
 Test System: EVERFINE GO-2000B\_V1 SYSTEM V2.0.366  
 Humidity: 65.0%  
 Test Distance: 8.791m [K=1.0000]  
 Remarks:

**AAI Figure**

|  |             |                  |
|--|-------------|------------------|
| Test:U:230.03V I:0.0695A P:8.0508W PF:0.5034 Freq:0Hz Lamp Flux:588.112x1 lm |             |                  |
| NAME: LED Ceiling light  | TYPE:       | WEIGHT:          |
| SPEC.:200  | DIM.: 200MM | SERIAL No.:      |
| MFR.:  | SUR.:       | Shielding Angle: |



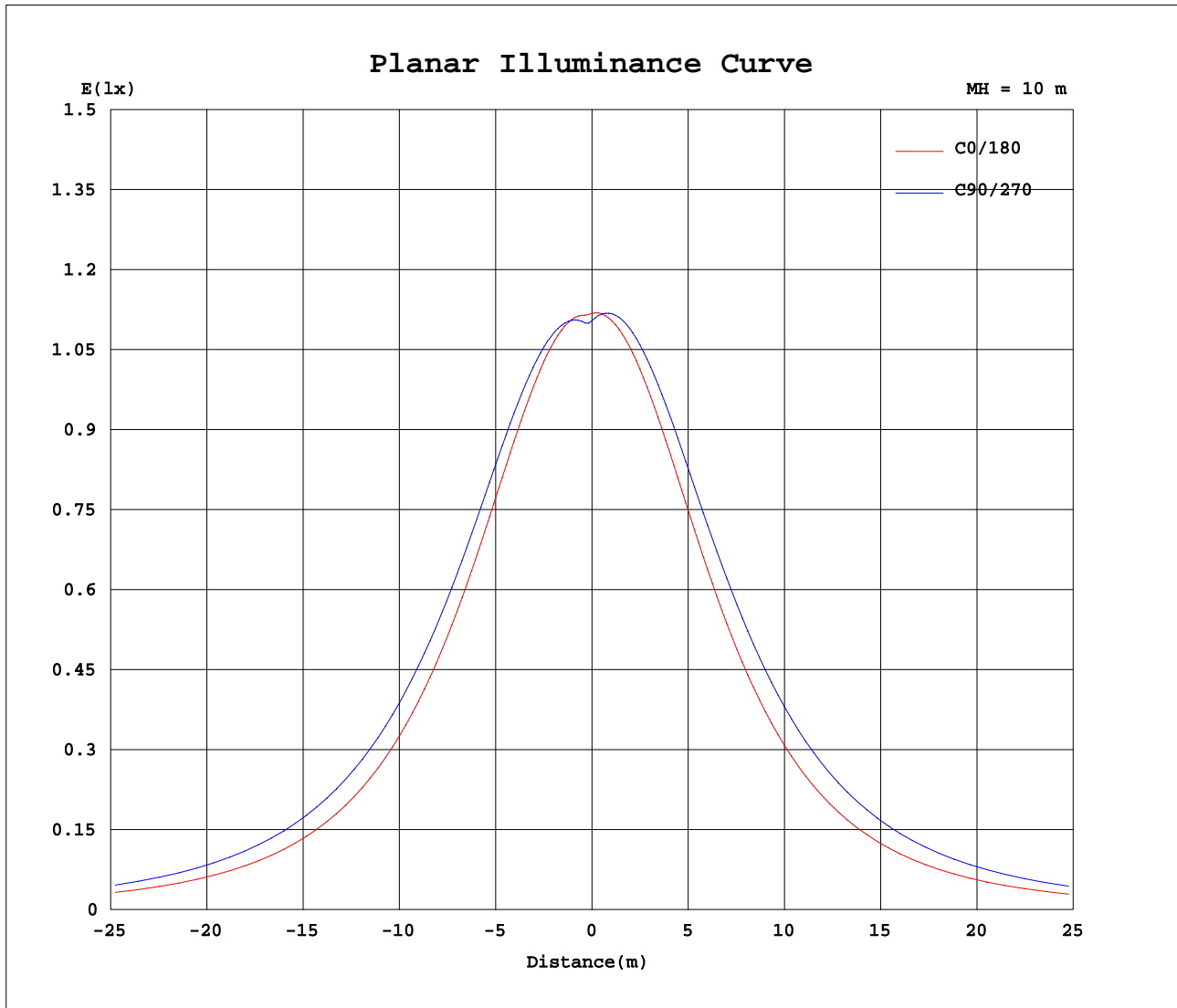
Note:The Curves indicate the illuminated area and the average illumination when the luminaire is at different distance.

C Range: 0 - 360DEG  
 C Interval: 30.0DEG  
 Test Speed: HIGH  
 Temperature:25.3DEG  
 Operators:  
 Test Date:16 November 2020

γ Range: 0 - 180DEG  
 γ Interval: 1.0DEG  
 Test System:EVERFINE GO-2000B\_V1 SYSTEM V2.0.366  
 Humidity:65.0%  
 Test Distance:8.791m [K=1.0000]  
 Remarks:



**Planar Illuminance Curve**



C Range: 0 - 360DEG  
 C Interval: 30.0DEG  
 Test Speed: HIGH  
 Temperature: 25.3DEG  
 Operators:  
 Test Date: 16 November 2020

$\gamma$  Range: 0 - 180DEG  
 $\gamma$  Interval: 1.0DEG  
 Test System: EVERFINE GO-2000B\_V1 SYSTEM V2.0.366  
 Humidity: 65.0%  
 Test Distance: 8.791m [K=1.0000]  
 Remarks:

LUMINOUS DISTRIBUTION INTENSITY DATA

|  |             |                  |
|--|-------------|------------------|
| Test:U:230.03V I:0.0695A P:8.0508W PF:0.5034 Freq:0Hz Lamp Flux:588.112x1 lm |             |                  |
| NAME: LED Ceiling light  | TYPE:       | WEIGHT:          |
| SPEC.:200  | DIM.: 200MM | SERIAL No.:      |
| MFR.:  | SUR.:       | Shielding Angle: |

Table--1

UNIT: cd

| C(DEG)<br>γ (DEG) | 0    | 30   | 60   | 90   | 120  | 150  | 180  | 210  | 240  | 270  | 300  | 330  |  |  |  |  |  |  |  |
|-------------------|------|------|------|------|------|------|------|------|------|------|------|------|--|--|--|--|--|--|--|
| 0                 | 112  | 111  | 111  | 110  | 110  | 110  | 112  | 111  | 111  | 110  | 110  | 110  |  |  |  |  |  |  |  |
| 5                 | 112  | 112  | 112  | 112  | 112  | 111  | 112  | 113  | 113  | 113  | 112  | 112  |  |  |  |  |  |  |  |
| 10                | 113  | 113  | 114  | 114  | 114  | 112  | 112  | 114  | 115  | 115  | 115  | 114  |  |  |  |  |  |  |  |
| 15                | 112  | 114  | 116  | 116  | 116  | 113  | 111  | 114  | 116  | 116  | 116  | 114  |  |  |  |  |  |  |  |
| 20                | 111  | 114  | 117  | 117  | 117  | 113  | 109  | 113  | 117  | 116  | 117  | 115  |  |  |  |  |  |  |  |
| 25                | 109  | 113  | 118  | 117  | 117  | 112  | 106  | 112  | 116  | 116  | 116  | 114  |  |  |  |  |  |  |  |
| 30                | 106  | 112  | 117  | 116  | 116  | 110  | 102  | 109  | 115  | 115  | 116  | 112  |  |  |  |  |  |  |  |
| 35                | 102  | 109  | 116  | 115  | 115  | 107  | 97.6 | 106  | 113  | 113  | 114  | 110  |  |  |  |  |  |  |  |
| 40                | 97.2 | 106  | 114  | 112  | 112  | 104  | 92.7 | 102  | 111  | 111  | 112  | 107  |  |  |  |  |  |  |  |
| 45                | 92.1 | 102  | 111  | 110  | 110  | 100  | 87.1 | 97.7 | 107  | 108  | 109  | 103  |  |  |  |  |  |  |  |
| 50                | 86.4 | 97.9 | 107  | 106  | 106  | 95.5 | 81.0 | 92.6 | 103  | 104  | 106  | 98.6 |  |  |  |  |  |  |  |
| 55                | 80.1 | 92.8 | 103  | 102  | 102  | 90.4 | 74.5 | 87.1 | 98.6 | 99.2 | 101  | 93.7 |  |  |  |  |  |  |  |
| 60                | 73.4 | 87.2 | 98.3 | 97.4 | 96.7 | 84.7 | 67.5 | 80.9 | 93.1 | 93.9 | 96.0 | 88.1 |  |  |  |  |  |  |  |
| 65                | 66.3 | 81.1 | 92.7 | 91.8 | 90.9 | 78.4 | 60.2 | 74.3 | 87.0 | 87.9 | 90.2 | 81.9 |  |  |  |  |  |  |  |
| 70                | 58.8 | 74.4 | 86.4 | 85.5 | 84.5 | 71.7 | 52.6 | 67.2 | 80.4 | 81.3 | 83.7 | 75.1 |  |  |  |  |  |  |  |
| 75                | 51.2 | 67.2 | 79.5 | 78.7 | 77.7 | 64.6 | 45.1 | 60.0 | 73.5 | 74.3 | 76.7 | 67.7 |  |  |  |  |  |  |  |
| 80                | 43.6 | 59.9 | 72.4 | 71.5 | 70.6 | 57.5 | 37.8 | 52.9 | 66.5 | 67.2 | 69.6 | 60.1 |  |  |  |  |  |  |  |
| 85                | 36.4 | 52.8 | 65.3 | 64.5 | 63.8 | 50.8 | 31.1 | 46.3 | 59.7 | 59.7 | 62.6 | 52.6 |  |  |  |  |  |  |  |
| 90                | 29.6 | 45.6 | 58.2 | 57.7 | 57.2 | 45.8 | 27.2 | 42.6 | 55.3 | 54.5 | 55.5 | 45.7 |  |  |  |  |  |  |  |
| 95                | 22.6 | 29.8 | 37.2 | 40.4 | 37.0 | 32.9 | 23.5 | 32.0 | 40.4 | 41.6 | 39.2 | 33.4 |  |  |  |  |  |  |  |
| 100               | 14.6 | 14.8 | 17.1 | 21.8 | 17.0 | 17.5 | 16.5 | 17.4 | 19.9 | 23.4 | 18.3 | 17.2 |  |  |  |  |  |  |  |
| 105               | 8.34 | 5.76 | 3.82 | 8.96 | 3.33 | 8.07 | 10.3 | 8.20 | 5.54 | 10.4 | 4.68 | 6.63 |  |  |  |  |  |  |  |
| 110               | 3.42 | 0.82 | 0.50 | 0.55 | 0.53 | 2.88 | 5.53 | 2.89 | 0.55 | 0.88 | 0.55 | 1.29 |  |  |  |  |  |  |  |
| 115               | 0.46 | 0.48 | 0.55 | 0.57 | 0.55 | 0.52 | 1.57 | 0.52 | 0.58 | 0.57 | 0.57 | 0.48 |  |  |  |  |  |  |  |
| 120               | 0.48 | 0.50 | 0.54 | 0.59 | 0.56 | 0.54 | 0.52 | 0.54 | 0.60 | 0.61 | 0.58 | 0.49 |  |  |  |  |  |  |  |
| 125               | 0.51 | 0.52 | 0.56 | 0.60 | 0.58 | 0.56 | 0.55 | 0.56 | 0.61 | 0.62 | 0.60 | 0.52 |  |  |  |  |  |  |  |
| 130               | 0.54 | 0.54 | 0.57 | 0.62 | 0.61 | 0.58 | 0.57 | 0.58 | 0.62 | 0.62 | 0.62 | 0.54 |  |  |  |  |  |  |  |
| 135               | 0.56 | 0.57 | 0.61 | 0.64 | 0.62 | 0.60 | 0.59 | 0.61 | 0.64 | 0.63 | 0.62 | 0.55 |  |  |  |  |  |  |  |
| 140               | 0.59 | 0.60 | 0.62 | 0.64 | 0.62 | 0.62 | 0.62 | 0.62 | 0.65 | 0.64 | 0.63 | 0.57 |  |  |  |  |  |  |  |
| 145               | 0.62 | 0.61 | 0.63 | 0.66 | 0.63 | 0.63 | 0.64 | 0.63 | 0.66 | 0.65 | 0.65 | 0.62 |  |  |  |  |  |  |  |
| 150               | 0.63 | 0.63 | 0.63 | 0.67 | 0.65 | 0.65 | 0.66 | 0.64 | 0.67 | 0.67 | 0.66 | 0.62 |  |  |  |  |  |  |  |
| 155               | 0.65 | 0.66 | 0.65 | 0.68 | 0.66 | 0.66 | 0.68 | 0.69 | 0.68 | 0.67 | 0.67 | 0.63 |  |  |  |  |  |  |  |
| 160               | 0.68 | 0.67 | 0.68 | 0.69 | 0.68 | 0.68 | 0.70 | 0.69 | 0.69 | 0.68 | 0.68 | 0.64 |  |  |  |  |  |  |  |
| 165               | 0.69 | 0.68 | 0.68 | 0.69 | 0.69 | 0.70 | 0.71 | 0.69 | 0.70 | 0.69 | 0.69 | 0.67 |  |  |  |  |  |  |  |
| 170               | 0.69 | 0.70 | 0.69 | 0.70 | 0.69 | 0.70 | 0.71 | 0.70 | 0.71 | 0.69 | 0.70 | 0.69 |  |  |  |  |  |  |  |
| 175               | 0.69 | 0.71 | 0.69 | 0.70 | 0.69 | 0.71 | 0.71 | 0.71 | 0.71 | 0.69 | 0.70 | 0.69 |  |  |  |  |  |  |  |
| 180               | 0.71 | 0.71 | 0.70 | 0.70 | 0.70 | 0.71 | 0.71 | 0.71 | 0.71 | 0.70 | 0.70 | 0.70 |  |  |  |  |  |  |  |

C Range: 0 - 360DEG  
 C Interval: 30.0DEG  
 Test Speed: HIGH  
 Temperature:25.3DEG  
 Operators:  
 Test Date:16 November 2020

γ Range: 0 - 180DEG  
 γ Interval: 1.0DEG  
 Test System:EVERFINE GO-2000B\_V1 SYSTEM V2.0.366  
 Humidity:65.0%  
 Test Distance:8.791m [K=1.0000]  
 Remarks: