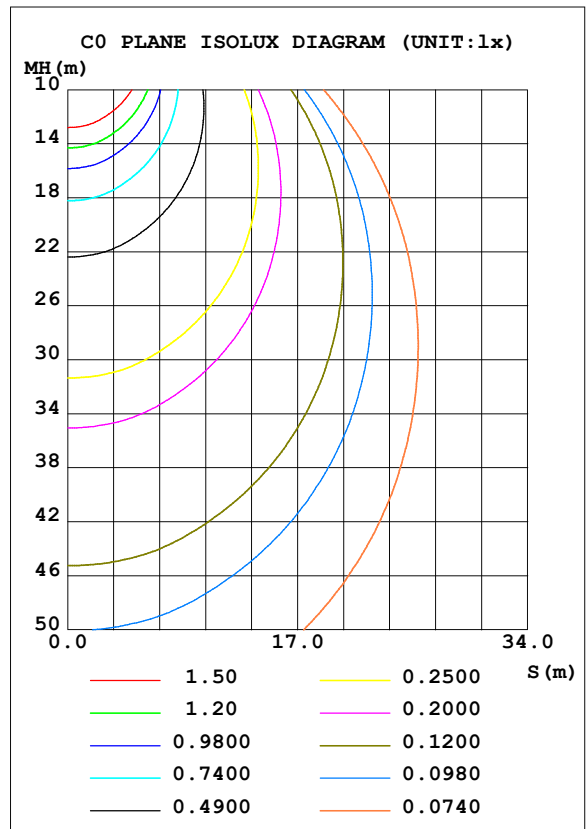
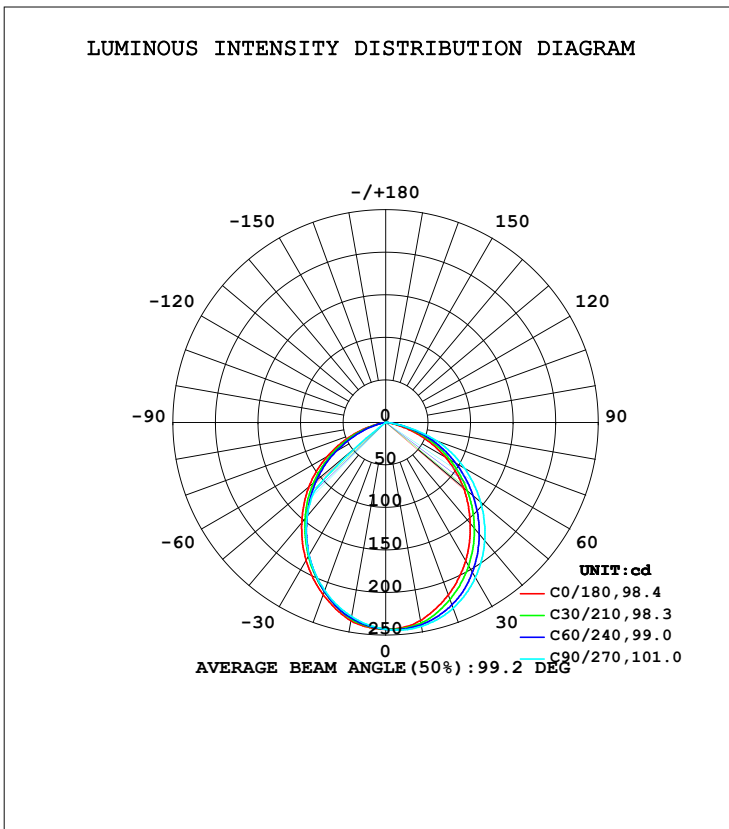


LUMINAIRE PHOTOMETRIC TEST REPORT

Test:U:230.49V I:0.0276A P:5.2772W PF:0.8301 Freq:49.99Hz Lamp Flux:562.519x1 lm		
NAME: RB602-6003K	TYPE:	WEIGHT:
SPEC.:	DIM.:	SERIAL No.:001
MFR.: EUROTECH LIGHTING	SUR.:	Shielding Angle:

DATA OF LAMP		PHOTOMETRIC DATA Eff: 106.59 lm/W			
MODEL	2835	I _{max} (cd)	245.2	S/MH (C0/180)	1.16
NOMINAL POWER (W)	6	LOR (%)	100.0	S/MH (C90/270)	1.12
RATED VOLTAGE (V)	230	TOTAL FLUX (lm)	562.52	η UP, DN (C0-180)	0.0,56.9
NOMINAL FLUX (lm)	562.519	CIE CLASS	DIRECT	η UP, DN (C180-360)	0.0,43.1
LAMPS INSIDE	1	η up (%)	0.0	CIBSE SHR NOM	1.25
TEST VOLTAGE (V)	230	η down (%)	100.0	CIBSE SHR MAX	1.35



C Range: 0 - 360DEG
 C Interval: 10.0DEG
 Test Speed: MEDIUM
 Temperature:25.3DEG
 Operators:
 Test Date:2022-08-25

γ Range: 0 - 180DEG
 γ Interval: 0.5DEG
 Test System:EVERFINE GO-2000B_V1 SYSTEM V2.0.407.13
 Humidity:65.0%
 Test Distance:9.180m [K=1.0000]
 Remarks: 3000K

ZONAL FLUX DIAGRAM

ZONAL FLUX DIAGRAM:

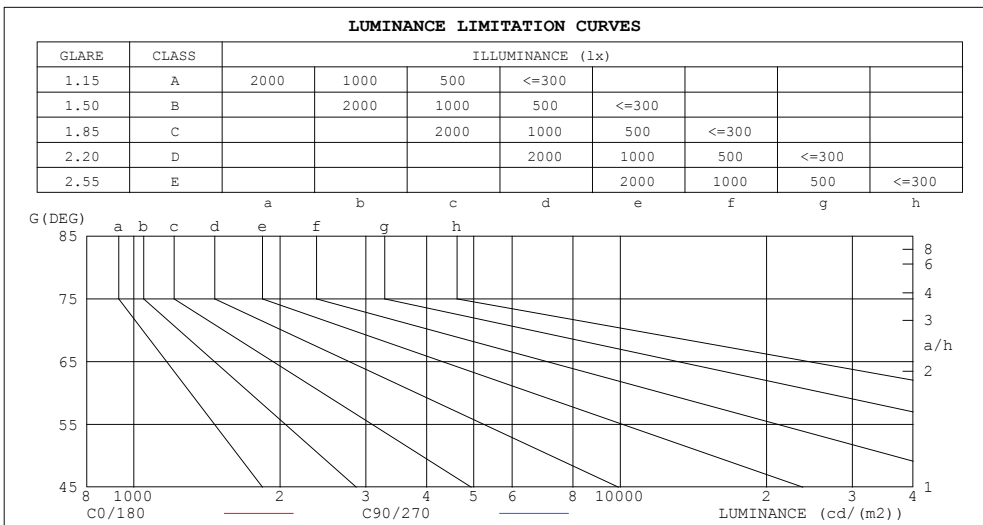
γ	C0	C45	C90	C135	C180	C225	C270	C315	γ	Φ zone	Φ total	%lum,lamp
10	236.3	240.3	243.3	243.2	236.6	233.9	231.6	231.1	0- 10	22.92	22.92	4.07,4.07
20	215.7	224.8	232.2	229.7	215.4	210.9	210.1	207.6	10- 20	64.39	87.31	15.5,15.5
30	188.0	198.8	210.7	206.8	187.2	180.3	180.5	173.4	20- 30	94.19	181.5	32.3,32.3
40	154.7	166.5	181.2	176.7	153.6	144.9	143.7	128.6	30- 40	108.6	290.1	51.6,51.6
50	119.4	129.6	145.6	141.2	118.0	108.5	49.28	94.78	40- 50	105.7	395.8	70.4,70.4
60	80.36	90.37	106.7	102.5	78.75	69.58	0	59.38	50- 60	84.91	480.7	85.4,85.4
70	39.84	51.39	64.48	62.82	38.27	31.33	0	22.14	60- 70	56.23	536.9	95.4,95.4
80	3.821	15.87	14.53	24.40	1.053	0.1495	0	0	70- 80	23.40	560.3	99.6,99.6
90	0	0	0	0	0	0	0	0	80- 90	2.226	562.5	100,100
100	0	0	0	0	0	0	0	0	90-100	0	562.5	100,100
110	0	0	0	0	0	0	0	0	100-110	0	562.5	100,100
120	0	0	0	0	0	0	0	0	110-120	0	562.5	100,100
130	0	0	0	0	0	0	0	0	120-130	0	562.5	100,100
140	0	0	0	0	0	0	0	0	130-140	0	562.5	100,100
150	0	0	0	0	0	0	0	0	140-150	0	562.5	100,100
160	0	0	0	0	0	0	0	0	150-160	0	562.5	100,100
170	0	0	0	0	0	0	0	0	160-170	0	562.5	100,100
180	0	0	0	0	0	0	0	0	170-180	0	562.5	100,100
DEG	LUMINOUS INTENSITY:cd									UNIT:lm		

C Range: 0 - 360DEG
 C Interval: 10.0DEG
 Test Speed: MEDIUM
 Temperature:25.3DEG
 Operators:
 Test Date:2022-08-25

γ Range: 0 - 180DEG
 γ Interval: 0.5DEG
 Test System:EVERFINE GO-2000B_V1 SYSTEM V2.0.407.13
 Humidity:65.0%
 Test Distance:9.180m [K=1.0000]
 Remarks: 3000K

LUMINANCE LIMITATION CURVES

Test:U:230.49V I:0.0276A P:5.2772W PF:0.8301 Freq:49.99Hz Lamp Flux:562.519x1 lm		
NAME:	TYPE:	WEIGHT:
SPEC.:	DIM.:	SERIAL No.:001
MFR.:	SUR.:	Shielding Angle:



LUMINANCE cd/(m2)		
G (DEG)	C0/180	C90/270
85	0	0
80	427689	1615621
75	1556204	2878265
70	2264365	3639741
65	2762627	3942517
60	3123931	4120386
55	3401166	4257790
50	3611056	4372737
45	3771684	4475256

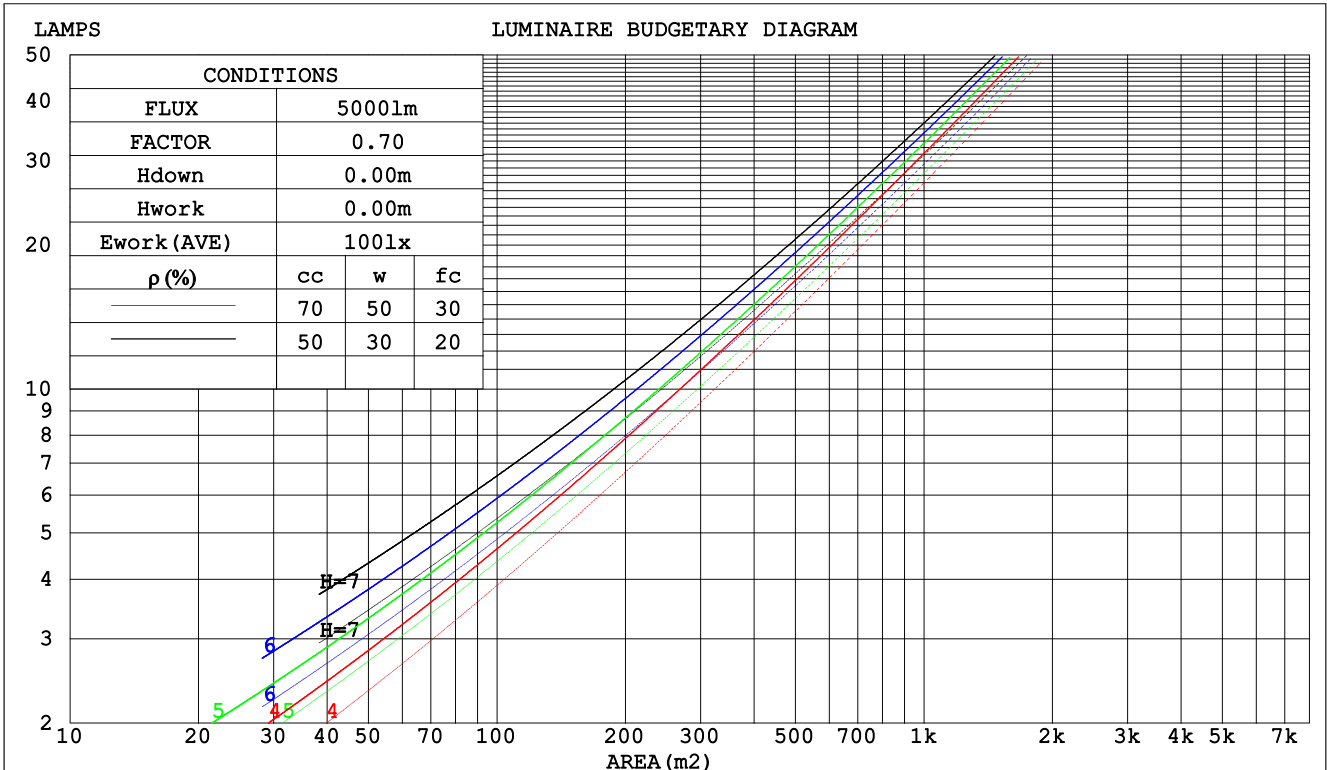
C Range: 0 - 360DEG
 C Interval: 10.0DEG
 Test Speed: MEDIUM
 Temperature:25.3DEG
 Operators:
 Test Date:2022-08-25

γ Range: 0 - 180DEG
 γ Interval: 0.5DEG
 Test System:EVERFINE GO-2000B_V1 SYSTEM V2.0.407.13
 Humidity:65.0%
 Test Distance:9.180m [K=1.0000]
 Remarks: 3000K

CU AND LUMINAIRE BUDGETARY ESTIMATE DIAGRAM

Test:U:230.49V I:0.0276A P:5.2772W PF:0.8301 Freq:49.99Hz Lamp Flux:562.519x1 lm		
NAME:	TYPE:	WEIGHT:
SPEC.:	DIM.:	SERIAL No.:001
MFR.:	SUR.:	Shielding Angle:

pcc	80%			70%			50%			30%			10%			0
	50%	30%	10%	50%	30%	10%	50%	30%	10%	50%	30%	10%	50%	30%	10%	0
pw	50%	30%	10%	50%	30%	10%	50%	30%	10%	50%	30%	10%	50%	30%	10%	0
pfc	20%			20%			20%			20%			20%			0
RCR	RCR:Room Cavity Ratio						Coefficients of Utilization(CU)									
0.0	1.19	1.19	1.19	1.16	1.16	1.16	1.11	1.11	1.11	1.06	1.06	1.06	1.02	1.02	1.02	1.00
1.0	1.06	1.02	.99	1.04	1.00	.97	.99	.97	.94	.96	.93	.91	.92	.90	.89	.87
2.0	.94	.87	.82	.92	.86	.81	.88	.83	.79	.85	.81	.78	.82	.79	.76	.74
3.0	.83	.75	.69	.81	.74	.69	.78	.72	.68	.76	.71	.66	.73	.69	.65	.63
4.0	.74	.66	.60	.73	.65	.59	.70	.64	.58	.68	.62	.58	.66	.61	.57	.55
5.0	.67	.58	.52	.65	.57	.52	.63	.56	.51	.61	.55	.50	.60	.54	.50	.48
6.0	.60	.52	.46	.59	.51	.45	.57	.50	.45	.56	.49	.45	.54	.49	.44	.42
7.0	.55	.46	.41	.54	.46	.40	.52	.45	.40	.51	.45	.40	.50	.44	.40	.38
8.0	.50	.42	.36	.49	.42	.36	.48	.41	.36	.47	.41	.36	.46	.40	.36	.34
9.0	.46	.38	.33	.46	.38	.33	.44	.37	.33	.43	.37	.32	.42	.37	.32	.31
10.0	.43	.35	.30	.42	.35	.30	.41	.34	.30	.40	.34	.30	.39	.34	.29	.28



C Range: 0 - 360DEG
 C Interval: 10.0DEG
 Test Speed: MEDIUM
 Temperature:25.3DEG
 Operators:
 Test Date:2022-08-25

γ Range: 0 - 180DEG
 γ Interval: 0.5DEG
 Test System:EVERFINE GO-2000B_V1 SYSTEM V2.0.407.13
 Humidity:65.0%
 Test Distance:9.180m [K=1.0000]
 Remarks: 3000K

WEC AND CCEC

Test:U:230.49V I:0.0276A P:5.2772W PF:0.8301 Freq:49.99Hz Lamp Flux:562.519x1 lm															
NAME:						TYPE:						WEIGHT:			
SPEC.:						DIM.:						SERIAL No.:001			
MFR.:						SUR.:						Shielding Angle:			

pcc	80%			70%			50%			30%			10%			0
pw	50%	30%	10%	50%	30%	10%	50%	30%	10%	50%	30%	10%	50%	30%	10%	0
pfc	20%			20%			20%			20%			20%			0
RCR	RCR:Room Cavity Ratio						Wall Exitance Coefficients(WEC)									
0.0																
1.0	.271	.154	.049	.264	.150	.048	.251	.144	.046	.239	.138	.044	.227	.132	.043	
2.0	.262	.144	.044	.256	.141	.043	.245	.136	.042	.234	.131	.041	.224	.127	.040	
3.0	.247	.132	.039	.242	.130	.039	.232	.126	.038	.222	.122	.037	.214	.118	.037	
4.0	.231	.120	.035	.226	.118	.035	.217	.115	.034	.209	.112	.034	.202	.109	.033	
5.0	.216	.110	.032	.212	.109	.032	.204	.106	.031	.196	.104	.031	.189	.101	.030	
6.0	.202	.101	.029	.198	.100	.029	.191	.098	.028	.184	.096	.028	.178	.094	.028	
7.0	.189	.093	.026	.186	.092	.026	.179	.091	.026	.173	.089	.026	.168	.087	.026	
8.0	.177	.087	.024	.174	.086	.024	.169	.084	.024	.163	.083	.024	.158	.081	.024	
9.0	.167	.081	.023	.164	.080	.022	.159	.079	.022	.154	.077	.022	.150	.076	.022	
10.0	.158	.076	.021	.155	.075	.021	.151	.074	.021	.146	.073	.021	.142	.071	.021	

pcc	80%			70%			50%			30%			10%			0
pw	50%	30%	10%	50%	30%	10%	50%	30%	10%	50%	30%	10%	50%	30%	10%	0
pfc	20%			20%			20%			20%			20%			0
RCR	RCR:Room Cavity Ratio						Ceiling Cavity Exitance Coefficients(CCEC)									
0.0	.190	.190	.190	.163	.163	.163	.111	.111	.111	.064	.064	.064	.020	.020	.020	
1.0	.178	.156	.137	.152	.134	.118	.104	.092	.082	.060	.053	.048	.019	.017	.015	
2.0	.168	.132	.102	.144	.114	.088	.099	.079	.061	.057	.046	.036	.018	.015	.012	
3.0	.160	.114	.078	.137	.098	.067	.094	.068	.047	.054	.040	.028	.017	.013	.009	
4.0	.152	.101	.061	.131	.087	.053	.090	.061	.037	.052	.035	.022	.017	.012	.007	
5.0	.145	.090	.049	.125	.078	.043	.086	.054	.030	.050	.032	.018	.016	.010	.006	
6.0	.138	.082	.041	.119	.071	.036	.082	.049	.025	.048	.029	.015	.015	.010	.005	
7.0	.132	.075	.035	.113	.065	.030	.078	.045	.021	.045	.027	.013	.015	.009	.004	
8.0	.126	.069	.030	.108	.060	.026	.075	.042	.018	.043	.025	.011	.014	.008	.004	
9.0	.120	.064	.026	.103	.055	.023	.071	.039	.016	.042	.023	.010	.013	.008	.003	
10.0	.114	.060	.023	.099	.052	.020	.068	.036	.014	.040	.022	.009	.013	.007	.003	

C Range: 0 - 360DEG
 C Interval: 10.0DEG
 Test Speed: MEDIUM
 Temperature:25.3DEG
 Operators:
 Test Date:2022-08-25

γ Range: 0 - 180DEG
 γ Interval: 0.5DEG
 Test System:EVERFINE GO-2000B_V1 SYSTEM V2.0.407.13
 Humidity:65.0%
 Test Distance:9.180m [K=1.0000]
 Remarks: 3000K

UGR(Unified Glare Rating) Table

Test:U:230.49V I:0.0276A P:5.2772W PF:0.8301 Freq:49.99Hz Lamp Flux:562.519x1 lm										
NAME:					TYPE:			WEIGHT:		
SPEC.:					DIM.:			SERIAL No.:001		
MFR.:					SUR.:			Shielding Angle:		
ceiling/cavity	0.7	0.7	0.5	0.5	0.3	0.7	0.7	0.5	0.5	0.3
walls	0.5	0.3	0.5	0.3	0.3	0.5	0.3	0.5	0.3	0.3
working plane	0.2	0.2	0.2	0.2	0.2	0.2	0.2	0.2	0.2	0.2
Room dimensions	Viewed crosswise					Viewed endwise				
x = 2H y = 2H	43.3	44.8	43.6	45.0	45.2	44.3	45.7	44.6	45.9	46.1
3H	44.4	45.7	44.7	45.9	46.2	45.8	47.1	46.1	47.3	47.5
4H	44.7	45.9	45.0	46.2	46.4	46.2	47.5	46.5	47.7	48.0
6H	44.7	45.8	45.0	46.1	46.4	46.4	47.5	46.7	47.8	48.1
8H	44.6	45.8	45.0	46.0	46.3	46.3	47.5	46.7	47.7	48.0
12H	44.6	45.7	44.9	45.9	46.2	46.3	47.4	46.6	47.6	47.9
4H 2H	44.0	45.2	44.3	45.5	45.7	44.7	46.0	45.0	46.2	46.5
3H	45.2	46.3	45.6	46.6	46.9	46.3	47.4	46.7	47.7	48.0
4H	45.6	46.6	46.0	46.9	47.2	46.9	47.9	47.2	48.2	48.5
6H	45.7	46.5	46.1	46.9	47.2	47.1	48.0	47.5	48.3	48.7
8H	45.6	46.4	46.0	46.8	47.2	47.1	47.9	47.5	48.2	48.6
12H	45.6	46.3	46.0	46.7	47.1	47.0	47.8	47.4	48.1	48.5
8H 4H	45.8	46.6	46.2	47.0	47.4	47.0	47.8	47.4	48.2	48.5
6H	46.0	46.6	46.4	47.0	47.5	47.3	47.9	47.7	48.3	48.8
8H	45.9	46.5	46.4	47.0	47.4	47.3	47.9	47.7	48.3	48.7
12H	45.9	46.4	46.4	46.9	47.3	47.2	47.7	47.7	48.2	48.7
12H 4H	45.8	46.5	46.2	46.9	47.3	47.0	47.7	47.4	48.1	48.5
6H	46.0	46.6	46.5	47.0	47.4	47.3	47.9	47.7	48.3	48.7
8H	46.0	46.5	46.5	46.9	47.4	47.3	47.8	47.8	48.2	48.7
Variations with the observer position at spacings:										
S = 1.0H	+ 0.3 / - 0.4					+ 0.2 / - 0.2				
1.5H	+ 0.2 / - 0.5					+ 0.2 / - 0.2				
2.0H	+ 0.3 / - 0.6					+ 0.5 / - 0.5				

CIE Pub.117, 562.5 lm Total Lamp Luminous Flux Correct (8log(F/F0) = -2.0)
 Area: 5.2e-005 m2

C Range: 0 - 360DEG
 C Interval: 10.0DEG
 Test Speed: MEDIUM
 Temperature:25.3DEG
 Operators:
 Test Date:2022-08-25

γ Range: 0 - 180DEG
 γ Interval: 0.5DEG
 Test System:EVERFINE GO-2000B_V1 SYSTEM V2.0.407.13
 Humidity:65.0%
 Test Distance:9.180m [K=1.0000]
 Remarks: 3000K

UTILIZATION FACTORS TABLE

Test:U:230.49V I:0.0276A P:5.2772W PF:0.8301 Freq:49.99Hz Lamp Flux:562.519x1 lm		
NAME:	TYPE:	WEIGHT:
SPEC.:	DIM.:	SERIAL No.:001
MFR.:	SUR.:	Shielding Angle:

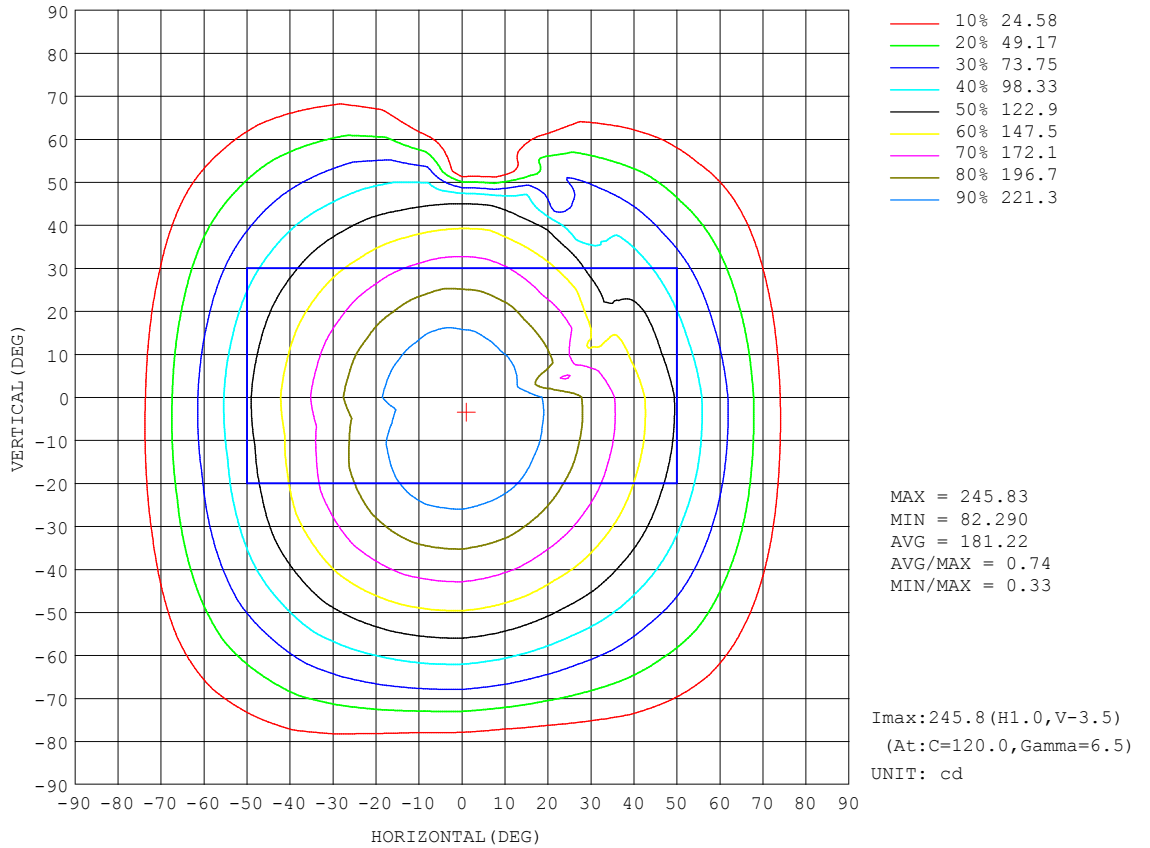
REFLECTANCE										
Ceiling	0.8	0.8	0.8	0.7	0.7	0.7	0.5	0.5	0.5	0
Walls	0.7	0.5	0.3	0.7	0.5	0.3	0.7	0.5	0.3	0
Working plane	0.2	0.2	0.2	0.2	0.2	0.2	0.2	0.2	0.2	0
ROOM INDEX	UTILIZATION FACTORS (PERCENT) $k(RI) \times RCR = 5$									
k = 0.60	61	50	44	61	50	44	60	50	44	37
0.80	72	61	54	71	60	54	69	60	53	47
1.00	80	70	63	79	69	63	77	70	62	56
1.25	87	77	71	85	77	70	83	75	70	63
1.50	92	83	76	90	82	76	87	80	75	68
2.00	98	90	85	96	89	84	93	87	82	75
2.50	101	95	89	100	93	88	96	91	86	79
3.00	105	99	94	102	97	93	99	94	90	82
4.00	108	103	99	106	101	98	102	98	95	87
5.00	110	106	103	108	104	101	103	101	98	89
ROOM INDEX	UF(total)									Direct
According to DIN EN 13032-2 2004			Suspended				SHR NOM = 1.25			

C Range: 0 - 360DEG
 C Interval: 10.0DEG
 Test Speed: MEDIUM
 Temperature:25.3DEG
 Operators:
 Test Date:2022-08-25

γ Range: 0 - 180DEG
 γ Interval: 0.5DEG
 Test System:EVERFINE GO-2000B_V1 SYSTEM V2.0.407.13
 Humidity:65.0%
 Test Distance:9.180m [K=1.0000]
 Remarks: 3000K

ISOCANDELA DIAGRAM

Test:U:230.49V I:0.0276A P:5.2772W PF:0.8301 Freq:49.99Hz Lamp Flux:562.519x1 lm		
NAME:	TYPE:	WEIGHT:
SPEC.:	DIM.:	SERIAL No.:001
MFR.:	SUR.:	Shielding Angle:

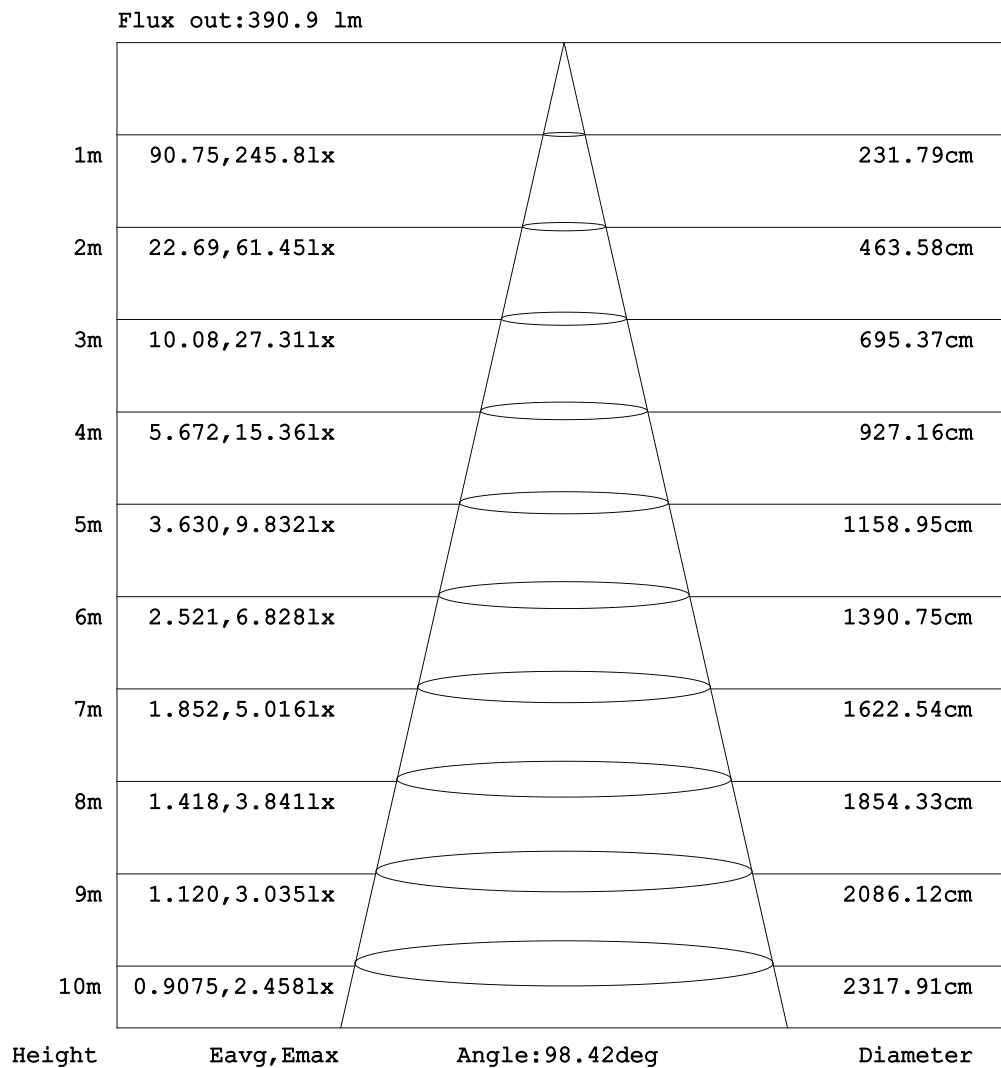


C Range: 0 - 360DEG
 C Interval: 10.0DEG
 Test Speed: MEDIUM
 Temperature:25.3DEG
 Operators:
 Test Date:2022-08-25

γ Range: 0 - 180DEG
 γ Interval: 0.5DEG
 Test System:EVERFINE GO-2000B_V1 SYSTEM V2.0.407.13
 Humidity:65.0%
 Test Distance:9.180m [K=1.0000]
 Remarks: 3000K

AAI Figure

Test:U:230.49V I:0.0276A P:5.2772W PF:0.8301 Freq:49.99Hz Lamp Flux:562.519x1 lm		
NAME:	TYPE:	WEIGHT:
SPEC.:	DIM.:	SERIAL No.:001
MFR.:	SUR.:	Shielding Angle:



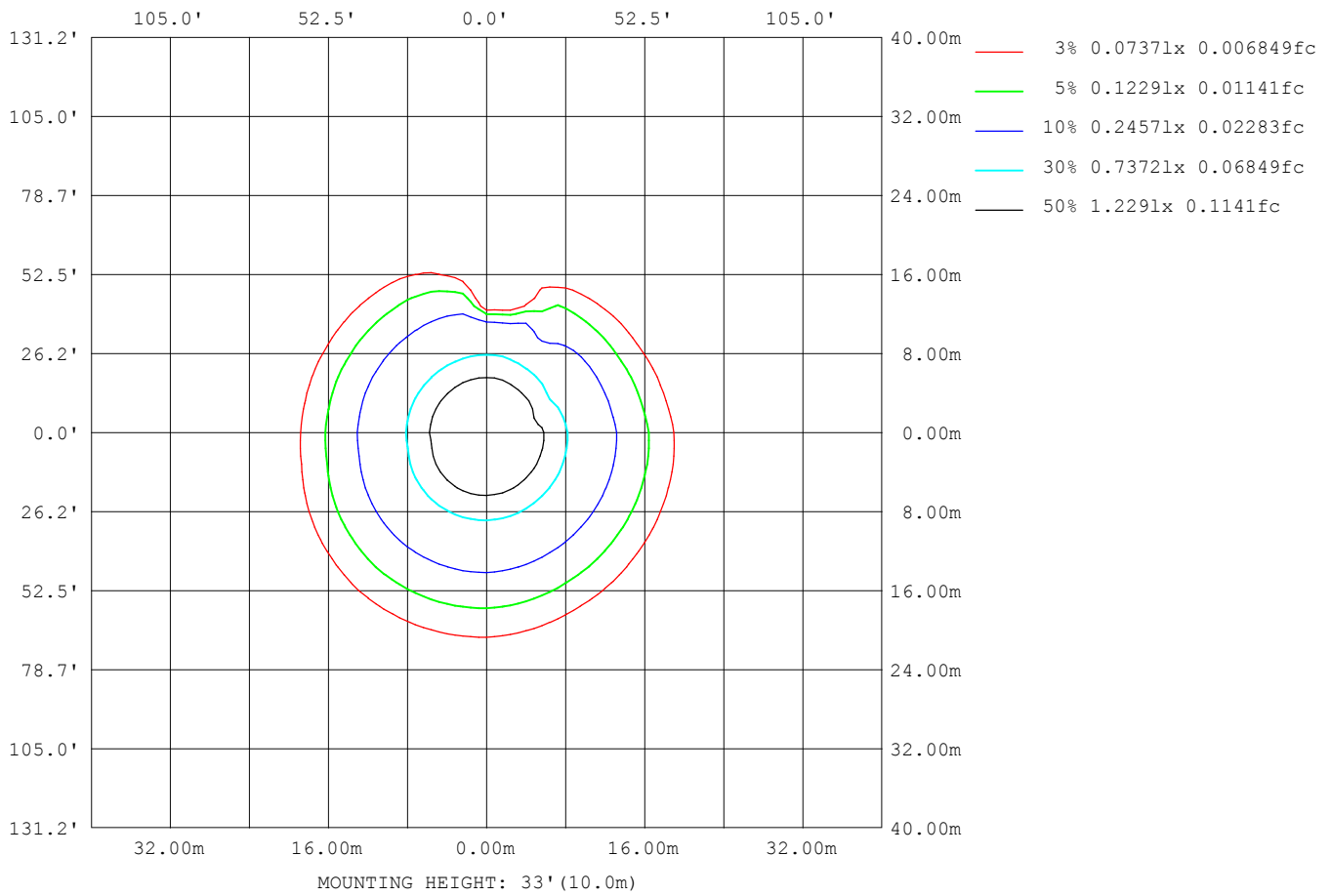
Note:The Curves indicate the illuminated area and the average illumination when the luminaire is at different distance.

C Range: 0 - 360DEG
 C Interval: 10.0DEG
 Test Speed: MEDIUM
 Temperature:25.3DEG
 Operators:
 Test Date:2022-08-25

γ Range: 0 - 180DEG
 γ Interval: 0.5DEG
 Test System:EVERFINE GO-2000B_V1 SYSTEM V2.0.407.13
 Humidity:65.0%
 Test Distance:9.180m [K=1.0000]
 Remarks: 3000K

ISOLUX DIAGRAM

Test:U:230.49V I:0.0276A P:5.2772W PF:0.8301 Freq:49.99Hz Lamp Flux:562.519x1 lm		
NAME:	TYPE:	WEIGHT:
SPEC.:	DIM.:	SERIAL No.:001
MFR.:	SUR.:	Shielding Angle:



C Range: 0 - 360DEG
 C Interval: 10.0DEG
 Test Speed: MEDIUM
 Temperature:25.3DEG
 Operators:
 Test Date:2022-08-25

γ Range: 0 - 180DEG
 γ Interval: 0.5DEG
 Test System:EVERFINE GO-2000B_V1 SYSTEM V2.0.407.13
 Humidity:65.0%
 Test Distance:9.180m [K=1.0000]
 Remarks: 3000K

LED Avg.L Report

Test:U:230.49V I:0.0276A P:5.2772W PF:0.8301 Freq:49.99Hz Lamp Flux:562.519x1 lm		
NAME:	TYPE:	WEIGHT:
SPEC.:	DIM.:	SERIAL No.:001
MFR.:	SUR.:	Shielding Angle:

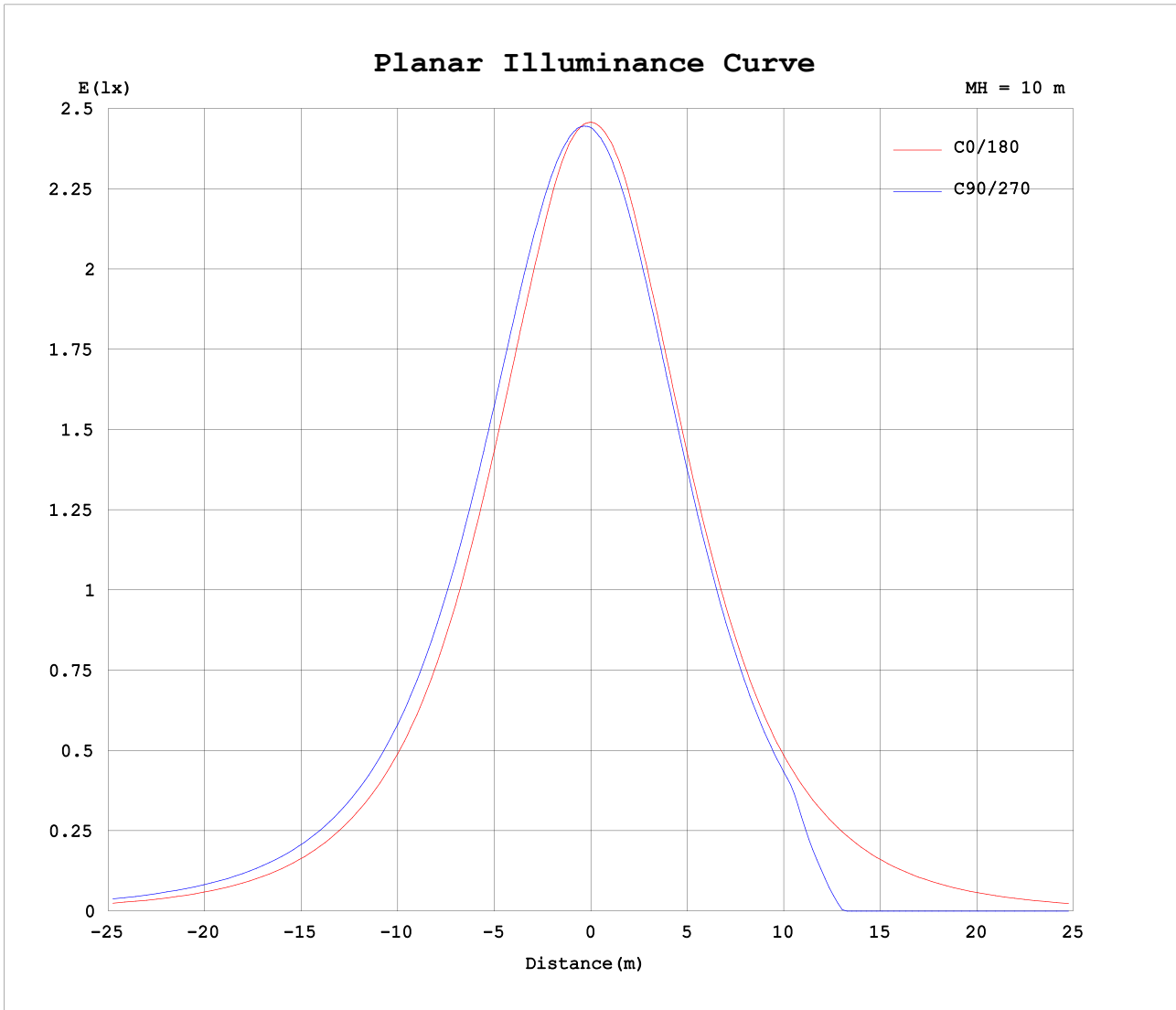
AvgL	cd/m2
L_0~180 (65) av	2693781
L_0~180 (75) av	1475972
L_0~180 (85) av	0
L_90~270 (65) av	1963508
L_90~270 (75) av	1433474
L_90~270 (85) av	0
L_45 (65) av	2768865
L_45 (75) av	1823511
L_45 (85) av	705504

Standard: GB/T 29293-2012

C Range: 0 - 360DEG
 C Interval: 10.0DEG
 Test Speed: MEDIUM
 Temperature:25.3DEG
 Operators:
 Test Date:2022-08-25

γ Range: 0 - 180DEG
 γ Interval: 0.5DEG
 Test System:EVERFINE GO-2000B_V1 SYSTEM V2.0.407.13
 Humidity:65.0%
 Test Distance:9.180m [K=1.0000]
 Remarks: 3000K

Planar Illuminance Curve



C Range: 0 - 360DEG
 C Interval: 10.0DEG
 Test Speed: MEDIUM
 Temperature: 25.3DEG
 Operators:
 Test Date: 2022-08-25

γ Range: 0 - 180DEG
 γ Interval: 0.5DEG
 Test System: EVERFINE GO-2000B_V1 SYSTEM V2.0.407.13
 Humidity: 65.0%
 Test Distance: 9.180m [K=1.0000]
 Remarks: 3000K

LUMINOUS DISTRIBUTION INTENSITY DATA

Test:U:230.49V I:0.0276A P:5.2772W PF:0.8301 Freq:49.99Hz Lamp Flux:562.519x1 lm		
NAME:	TYPE:	WEIGHT:
SPEC.:	DIM.:	SERIAL No.:001
MFR.:	SUR.:	Shielding Angle:

Table--1

UNIT: cd

C (DEG) \ γ (DEG)	0	10	20	30	40	50	60	70	80	90	100	110	120	130	140	150	160	170	180
0	243	243	243	243	243	243	243	243	243	243	243	243	243	243	243	243	243	243	243
5	242	242	242	243	243	243	244	244	244	245	245	245	245	245	244	244	243	242	242
10	236	237	238	239	240	241	241	242	242	243	243	244	244	244	242	241	239	237	237
15	227	228	230	232	234	235	236	237	238	239	239	240	240	239	237	234	231	228	227
20	216	217	219	221	223	226	228	229	231	232	232	233	233	231	228	225	221	217	215
25	202	204	206	209	211	214	217	219	221	223	223	224	223	221	217	214	209	205	202
30	188	190	192	195	197	200	204	207	209	211	211	212	211	209	205	201	196	191	187
35	172	174	176	179	182	185	188	192	194	197	197	198	197	194	190	186	180	175	171
40	155	157	159	162	165	168	171	176	179	181	182	182	181	179	175	170	164	158	154
45	137	139	141	144	147	150	153	158	161	164	165	165	164	162	157	153	146	141	136
50	119	121	123	126	128	131	134	139	143	146	146	147	145	143	139	134	128	123	118
55	100	103	104	106	109	112	115	119	123	126	127	127	126	125	120	115	109	104	98.8
60	80.4	83.2	84.7	86.9	88.7	92.1	94.5	98.8	103	107	107	107	106	105	100.0	95.8	90.1	84.1	78.8
65	60.1	63.2	65.0	67.8	69.0	72.4	74.6	78.5	82.8	86.3	86.7	87.1	86.4	85.1	80.1	76.4	70.3	64.0	58.3
70	39.8	43.1	45.5	48.9	50.0	52.8	54.2	57.3	61.0	64.5	65.0	65.8	65.9	65.2	60.4	57.0	50.6	43.8	38.3
75	20.7	24.0	26.7	30.4	32.0	33.3	33.1	33.7	35.3	38.6	39.5	42.3	44.8	44.9	41.1	37.9	31.7	24.8	19.0
80	3.82	6.71	9.58	13.1	15.4	16.4	15.5	13.8	12.8	14.5	15.8	19.9	24.1	25.7	23.1	19.3	14.8	7.83	1.05
85	0.00	0.00	0.00	0.00	1.74	4.02	3.12	0.00	0.00	0.00	0.00	0.46	8.22	10.7	7.88	2.72	0.03	0.00	0.00
90	0.00	0.00	0.00	0.00	0.00	0.00	0.00	0.00	0.00	0.00	0.00	0.00	0.00	0.00	0.00	0.00	0.00	0.00	0.00
95	0.00	0.00	0.00	0.00	0.00	0.00	0.00	0.00	0.00	0.00	0.00	0.00	0.00	0.00	0.00	0.00	0.00	0.00	0.00
100	0.00	0.00	0.00	0.00	0.00	0.00	0.00	0.00	0.00	0.00	0.00	0.00	0.00	0.00	0.00	0.00	0.00	0.00	0.00
105	0.00	0.00	0.00	0.00	0.00	0.00	0.00	0.00	0.00	0.00	0.00	0.00	0.00	0.00	0.00	0.00	0.00	0.00	0.00
110	0.00	0.00	0.00	0.00	0.00	0.00	0.00	0.00	0.00	0.00	0.00	0.00	0.00	0.00	0.00	0.00	0.00	0.00	0.00
115	0.00	0.00	0.00	0.00	0.00	0.00	0.00	0.00	0.00	0.00	0.00	0.00	0.00	0.00	0.00	0.00	0.00	0.00	0.00
120	0.00	0.00	0.00	0.00	0.00	0.00	0.00	0.00	0.00	0.00	0.00	0.00	0.00	0.00	0.00	0.00	0.00	0.00	0.00
125	0.00	0.00	0.00	0.00	0.00	0.00	0.00	0.00	0.00	0.00	0.00	0.00	0.00	0.00	0.00	0.00	0.00	0.00	0.00
130	0.00	0.00	0.00	0.00	0.00	0.00	0.00	0.00	0.00	0.00	0.00	0.00	0.00	0.00	0.00	0.00	0.00	0.00	0.00
135	0.00	0.00	0.00	0.00	0.00	0.00	0.00	0.00	0.00	0.00	0.00	0.00	0.00	0.00	0.00	0.00	0.00	0.00	0.00
140	0.00	0.00	0.00	0.00	0.00	0.00	0.00	0.00	0.00	0.00	0.00	0.00	0.00	0.00	0.00	0.00	0.00	0.00	0.00
145	0.00	0.00	0.00	0.00	0.00	0.00	0.00	0.00	0.00	0.00	0.00	0.00	0.00	0.00	0.00	0.00	0.00	0.00	0.00
150	0.00	0.00	0.00	0.00	0.00	0.00	0.00	0.00	0.00	0.00	0.00	0.00	0.00	0.00	0.00	0.00	0.00	0.00	0.00
155	0.00	0.00	0.00	0.00	0.00	0.00	0.00	0.00	0.00	0.00	0.00	0.00	0.00	0.00	0.00	0.00	0.00	0.00	0.00
160	0.00	0.00	0.00	0.00	0.00	0.00	0.00	0.00	0.00	0.00	0.00	0.00	0.00	0.00	0.00	0.00	0.00	0.00	0.00
165	0.00	0.00	0.00	0.00	0.00	0.00	0.00	0.00	0.00	0.00	0.00	0.00	0.00	0.00	0.00	0.00	0.00	0.00	0.00
170	0.00	0.00	0.00	0.00	0.00	0.00	0.00	0.00	0.00	0.00	0.00	0.00	0.00	0.00	0.00	0.00	0.00	0.00	0.00
175	0.00	0.00	0.00	0.00	0.00	0.00	0.00	0.00	0.00	0.00	0.00	0.00	0.00	0.00	0.00	0.00	0.00	0.00	0.00
180	0.00	0.00	0.00	0.00	0.00	0.00	0.00	0.00	0.00	0.00	0.00	0.00	0.00	0.00	0.00	0.00	0.00	0.00	0.00

C Range: 0 - 360DEG
 C Interval: 10.0DEG
 Test Speed: MEDIUM
 Temperature:25.3DEG
 Operators:
 Test Date:2022-08-25

γ Range: 0 - 180DEG
 γ Interval: 0.5DEG
 Test System:EVERFINE GO-2000B_V1 SYSTEM V2.0.407.13
 Humidity:65.0%
 Test Distance:9.180m [K=1.0000]
 Remarks: 3000K

LUMINOUS DISTRIBUTION INTENSITY DATA

Test:U:230.49V I:0.0276A P:5.2772W PF:0.8301 Freq:49.99Hz Lamp Flux:562.519x1 lm		
NAME:	TYPE:	WEIGHT:
SPEC.:	DIM.:	SERIAL No.:001
MFR.:	SUR.:	Shielding Angle:

Table--2

UNIT: cd

C (DEG) \ γ (DEG)	190	200	210	220	230	240	250	260	270	280	290	300	310	320	330	340	350		
0	243	243	243	243	243	243	243	243	243	243	243	243	243	243	243	243	243		
5	241	241	241	240	240	240	239	239	239	239	239	238	238	239	239	240	241		
10	235	235	234	234	234	234	233	232	232	232	231	231	231	232	233	234	234		
15	226	225	224	224	223	224	223	223	222	222	221	221	221	222	222	223	219		
20	214	213	212	211	210	211	211	212	210	210	209	209	208	207	208	210	185		
25	200	199	197	197	196	196	196	197	196	196	195	194	191	191	192	188	175		
30	185	184	182	181	180	180	180	181	181	181	179	176	173	174	174	156	183		
35	168	167	165	164	162	162	162	163	163	163	160	157	154	154	143	148	168		
40	151	149	147	146	144	144	143	143	144	144	139	136	133	124	121	147	152		
45	134	132	130	129	126	125	123	122	122	122	117	106	94.2	105	119	130	135		
50	115	114	111	110	107	106	104	98.9	49.3	51.6	88.3	62.7	89.8	99.8	105	110	115		
55	96.0	94.4	91.7	90.2	87.9	87.3	82.7	65.8	0.00	0.00	41.0	74.1	78.1	81.7	84.6	90.3	95.8		
60	75.9	74.5	71.9	70.7	68.5	66.5	57.4	32.9	0.00	0.00	34.5	52.1	57.1	61.7	64.4	70.5	75.7		
65	55.7	54.6	52.3	51.4	48.8	45.8	35.7	9.18	0.00	0.00	13.2	32.1	37.1	42.1	45.0	50.6	55.4		
70	35.8	34.9	33.0	32.5	30.2	27.3	17.7	0.00	0.00	0.00	0.10	15.9	20.3	24.0	26.5	31.4	35.7		
75	16.6	16.3	14.9	15.2	13.4	11.7	3.28	0.00	0.00	0.00	0.00	2.80	6.61	8.71	10.05	14.1	17.1		
80	0.02	0.25	0.01	0.28	0.02	0.00	0.00	0.00	0.00	0.00	0.00	0.00	0.00	0.00	0.00	0.00	1.14		
85	0.00	0.00	0.00	0.00	0.00	0.00	0.00	0.00	0.00	0.00	0.00	0.00	0.00	0.00	0.00	0.00	0.00		
90	0.00	0.00	0.00	0.00	0.00	0.00	0.00	0.00	0.00	0.00	0.00	0.00	0.00	0.00	0.00	0.00	0.00		
95	0.00	0.00	0.00	0.00	0.00	0.00	0.00	0.00	0.00	0.00	0.00	0.00	0.00	0.00	0.00	0.00	0.00		
100	0.00	0.00	0.00	0.00	0.00	0.00	0.00	0.00	0.00	0.00	0.00	0.00	0.00	0.00	0.00	0.00	0.00		
105	0.00	0.00	0.00	0.00	0.00	0.00	0.00	0.00	0.00	0.00	0.00	0.00	0.00	0.00	0.00	0.00	0.00		
110	0.00	0.00	0.00	0.00	0.00	0.00	0.00	0.00	0.00	0.00	0.00	0.00	0.00	0.00	0.00	0.00	0.00		
115	0.00	0.00	0.00	0.00	0.00	0.00	0.00	0.00	0.00	0.00	0.00	0.00	0.00	0.00	0.00	0.00	0.00		
120	0.00	0.00	0.00	0.00	0.00	0.00	0.00	0.00	0.00	0.00	0.00	0.00	0.00	0.00	0.00	0.00	0.00		
125	0.00	0.00	0.00	0.00	0.00	0.00	0.00	0.00	0.00	0.00	0.00	0.00	0.00	0.00	0.00	0.00	0.00		
130	0.00	0.00	0.00	0.00	0.00	0.00	0.00	0.00	0.00	0.00	0.00	0.00	0.00	0.00	0.00	0.00	0.00		
135	0.00	0.00	0.00	0.00	0.00	0.00	0.00	0.00	0.00	0.00	0.00	0.00	0.00	0.00	0.00	0.00	0.00		
140	0.00	0.00	0.00	0.00	0.00	0.00	0.00	0.00	0.00	0.00	0.00	0.00	0.00	0.00	0.00	0.00	0.00		
145	0.00	0.00	0.00	0.00	0.00	0.00	0.00	0.00	0.00	0.00	0.00	0.00	0.00	0.00	0.00	0.00	0.00		
150	0.00	0.00	0.00	0.00	0.00	0.00	0.00	0.00	0.00	0.00	0.00	0.00	0.00	0.00	0.00	0.00	0.00		
155	0.00	0.00	0.00	0.00	0.00	0.00	0.00	0.00	0.00	0.00	0.00	0.00	0.00	0.00	0.00	0.00	0.00		
160	0.00	0.00	0.00	0.00	0.00	0.00	0.00	0.00	0.00	0.00	0.00	0.00	0.00	0.00	0.00	0.00	0.00		
165	0.00	0.00	0.00	0.00	0.00	0.00	0.00	0.00	0.00	0.00	0.00	0.00	0.00	0.00	0.00	0.00	0.00		
170	0.00	0.00	0.00	0.00	0.00	0.00	0.00	0.00	0.00	0.00	0.00	0.00	0.00	0.00	0.00	0.00	0.00		
175	0.00	0.00	0.00	0.00	0.00	0.00	0.00	0.00	0.00	0.00	0.00	0.00	0.00	0.00	0.00	0.00	0.00		
180	0.00	0.00	0.00	0.00	0.00	0.00	0.00	0.00	0.00	0.00	0.00	0.00	0.00	0.00	0.00	0.00	0.00		

C Range: 0 - 360DEG
 C Interval: 10.0DEG
 Test Speed: MEDIUM
 Temperature:25.3DEG
 Operators:
 Test Date:2022-08-25

γ Range: 0 - 180DEG
 γ Interval: 0.5DEG
 Test System:EVERFINE GO-2000B_V1 SYSTEM V2.0.407.13
 Humidity:65.0%
 Test Distance:9.180m [K=1.0000]
 Remarks: 3000K